

National, regional and worldwide epidemiology of psoriasis: systematic analysis and modelling study

Rosa Parisi, PhD[†]; Ireny YK Iskandar, PhD[†]; Prof Evangelos Kontopantelis, PhD; Prof Matthias Augustin, MD; Prof Christopher EM Griffiths, MD; Prof Darren M Ashcroft, MD; on behalf of the Global Psoriasis Atlas

[†] Joint first author

The following sections provide a full description of the steps undertaken to build the statistical model; the tables summarising the results of the statistical analyses and diagnostics of the statistical model.

Text 3. Filtering of data from systematic review for inclusion into the statistical model

Following data extraction, a filtering process was developed for inclusion of studies into the statistical model as some studies used the same data resource (e.g. survey or database). To prevent duplication, the study with the most recent or complete data regarding the variable of interest or most robust in term of methodology (such as study design and calculation of the prevalence of psoriasis) was included. If errors were detected in obtaining the statistics of interest, these were recalculated or clarified with authors. When studies provided several estimates for different years, for instance when investigating trends over time, the estimate for the most recent year was included. Whenever raw data (such as the number of cases with psoriasis and the respective denominator) were not available, authors were contacted for more information. Details of the studies reporting on the prevalence of psoriasis which were or not included in the statistical model are given in eTable 2 (“Inclusion in the analysis”).

Text 4. Methods for calculating the global, regional and country-specific prevalence of psoriasis

A Bayesian hierarchical linear mixed model was fitted to estimate the global, regional and country-specific prevalence of psoriasis. In the Bayesian hierarchical model, estimates of the prevalence of psoriasis were informed both by study data from the same country, if available, and by study data from other countries.

The outcome was the log-transformed prevalence of psoriasis, allowing us to use a linear model and ensuring predictions within the 0-100% range, when back-transformed. Countries were mapped according to the Global Burden of Disease (GBD) classification¹ arranged into hierarchical groups composed of 189 countries nested in 21 regions, and regions nested in 7 super-regions (Table 1, main manuscript).

The model includes a 4-level hierarchy, random effects, denoted as:

- 35 countries are denoted c and indexed by i ;
- 12 regions are denoted r and indexed by j ;
- 7 super-region are denoted s and indexed by k ;
- 1 global random intercept

Our regression is as follows, with p_h equal to the prevalence measure reported by each study or calculated using the number of prevalent cases and the denominator provided:

$$y_h = \log(p_h)$$

$$y_h \sim \text{Normal}(\mu, \sigma^2)$$

And

$$p_{ijk} = \log(\beta_{0ijk} + X_i\beta)$$

Where:

$$\beta_{0ijk} = \gamma_{000} + u_{00k} + u_{0jk} + u_{ijk}$$

With: γ_{000} being the overall intercept; u_{00k} the random intercept for super-region k ($k = 1 \dots s$); u_{0jk} the random intercept for region j ($j = 1 \dots r$) within super-region k ; and u_{ijk} the random intercept for country i ($i = 1 \dots c$) within region j and super-region k .

All together there were three covariates all modelled as categorical variables and as fixed effects. These were “age strata” (children, adults and overall population); “diagnostic method” (physician/dermatologist vs self-reported) and “type of prevalence measure” (point/period prevalence vs lifetime prevalence).

$$p_{ijk} = \log(\beta_{0ijk} + \beta_{1ijk} \text{age strata} + \beta_{2ijk} \text{diagnostic method} + \beta_{3ijk} \text{prevalence measure})$$

The statistical model to generate estimates of the prevalence of psoriasis was fitted using Bayesian inference, sampling from the posterior distribution over the parameters using Hamiltonian Markov Chain Monte Carlo method. Four chains of 2000 iterations each, with a burn-in period of 1000, were used to run the model. The model was fit using weakly informative priors, where for the intercept corresponded to $N(0,10)$. After fitting the model, posterior predictions were made for each country and age strata permutation. Prevalence estimates are provided in the context of 95% uncertainty intervals (UIs). In the statistical model, the geographical groups were used to generate the estimates of the prevalence of psoriasis for those countries with no information. Therefore, if a country had no data, the estimates of the higher levels were the main drivers of the country estimate, controlling for the fixed effects in the model. In order to obtain the number of people affected by psoriasis by country, each country-specific prevalence estimate (and 95% UI) was multiplied by the size of its population using the United Nation population structure.² In total, the fit of each model was assessed by evaluating i) the measures relative to the effective sample size and autocorrelation; and ii) the trace plots (eFigures 2). All analyses were performed in R (version 3.6.1) using the RStanArm package, which relies on Stan.³

References

1. James SL, Abate D, Abate KH, et al. Global, regional, and national incidence, prevalence, and years lived with disability for 354 diseases and injuries for 195 countries and territories, 1990-2017: a systematic analysis for the Global Burden of Disease Study 2017. *The Lancet* 2018;392(10159):1789-858.
2. United Nations, Department of Economic and Social Affairs, Population Division (2017). World Population Prospects: The 2017 Revision, Volume II: Demographic Profiles.
3. Stan Development Team. Stan Modeling Language Users Guide and Reference Manual, Version 2.18. 2018

eTable 6 Crude lifetime prevalence (physician or dermatologist diagnosed) of psoriasis in children and number of children with psoriasis (in thousands) with 95% Uncertainty Intervals (UI), by country, region and super-region in the year 2017.

Country	Region	Superregion	Prevalence	95% Lower UI	95% Upper UI	Number of people with psoriasis	Number of people with psoriasis - 95% Lower UI	Number of people with psoriasis - 95% Upper UI	Country with missing data	Estimate "borrowed" from
Armenia			0.10	0.03	0.32	0.72	0.21	2.46	1	Super-region
Azerbaijan			0.10	0.03	0.32	2.83	0.83	9.59	1	Super-region
Georgia			0.10	0.03	0.32	0.93	0.27	3.14	1	Super-region
Kazakhstan			0.10	0.03	0.32	5.89	1.72	19.96	1	Super-region
Kyrgyzstan			0.10	0.03	0.32	2.30	0.67	7.80	1	Super-region
Mongolia			0.10	0.03	0.32	1.08	0.32	3.67	1	Super-region
Tajikistan			0.10	0.03	0.32	3.82	1.11	12.94	1	Super-region
Turkmenistan			0.10	0.03	0.32	2.14	0.63	7.27	1	Super-region
Uzbekistan			0.10	0.03	0.32	11.08	3.23	37.56	1	Super-region
Central Asia			0.10	0.03	0.32					
Albania			0.20	0.07	0.60	1.52	0.51	4.45	1	Region
Bulgaria			0.20	0.07	0.60	2.67	0.89	7.83	1	Region
Bosnia and Herzegovina			0.20	0.07	0.60	1.45	0.48	4.24	1	Region
Czech Republic			0.20	0.07	0.60	4.26	1.42	12.48	1	Region
Croatia			0.19	0.05	0.66	1.62	0.45	5.52	0	
Hungary			0.20	0.07	0.60	3.86	1.29	11.31	1	Region
Macedonia, FYR			0.20	0.07	0.60	0.97	0.32	2.84	1	Region
Montenegro			0.20	0.07	0.60	0.32	0.11	0.92	1	Region
Poland			0.23	0.07	0.79	17.34	4.91	59.26	0	
Romania			0.25	0.08	0.73	10.17	3.22	29.81	0	

Serbia	0.20	0.07	0.60	4.05	1.35	11.86	1	Region
Slovakia	0.20	0.07	0.60	2.27	0.76	6.66	1	Region
Slovenia	0.21	0.06	0.69	0.84	0.25	2.76	0	
Central Europe	0.20	0.07	0.60					
Belarus	0.07	0.02	0.26	1.34	0.35	5.30	1	Region
Estonia	0.07	0.02	0.26	0.18	0.05	0.71	1	Region
Lithuania	0.07	0.02	0.26	0.38	0.10	1.52	1	Region
Latvia	0.07	0.02	0.26	0.25	0.07	1.00	1	Region
Moldova	0.07	0.02	0.26	0.57	0.15	2.24	1	Region
Russia	0.06	0.02	0.19	18.08	5.32	60.37	0	
Ukraine	0.07	0.02	0.26	5.86	1.52	23.10	1	Region
Eastern Europe	0.07	0.02	0.26					
Central Europe, Eastern Europe, and Central Asia	0.10	0.03	0.32					
Brunei	0.08	0.02	0.30	0.11	0.03	0.40	1	Region
Japan	0.08	0.02	0.30	17.06	4.10	66.42	0	
South Korea	0.08	0.02	0.27	7.63	2.04	26.59	0	
Singapore	0.08	0.02	0.30	1.01	0.26	3.59	1	Region
High-income Asia Pacific	0.08	0.02	0.30					
Australia	0.27	0.08	0.87	16.31	4.92	53.42	0	
New Zealand	0.22	0.06	0.81	3.36	0.97	12.27	1	Region
Australasia	0.22	0.06	0.81					
Austria	0.21	0.11	0.41	3.58	1.83	6.92	1	Region
Belgium	0.21	0.11	0.41	5.54	2.84	10.70	1	Region

Switzerland	0.21	0.11	0.41	3.63	1.86	7.01	1	Region
Cyprus	0.21	0.11	0.41	0.59	0.30	1.14	1	Region
Germany	0.25	0.12	0.51	36.28	17.95	75.40	0	
Denmark	0.25	0.12	0.55	3.27	1.53	7.19	0	
Spain	0.16	0.07	0.35	14.04	6.00	31.37	0	
Finland	0.21	0.11	0.41	2.58	1.32	4.98	1	Region
France	0.22	0.09	0.49	35.81	15.48	81.51	0	
United Kingdom	0.21	0.10	0.46	33.17	15.46	71.07	0	
Greece	0.21	0.11	0.41	4.59	2.35	8.87	1	Region
Ireland	0.21	0.11	0.41	2.82	1.45	5.45	1	Region
Iceland	0.21	0.11	0.41	0.19	0.10	0.36	1	Region
Israel	0.26	0.11	0.68	7.57	3.16	20.19	0	
Italy	0.22	0.10	0.48	24.19	11.25	51.95	0	
Luxembourg	0.21	0.11	0.41	0.28	0.14	0.54	1	Region
Malta	0.21	0.11	0.41	0.18	0.09	0.35	1	Region
Netherlands	0.20	0.08	0.48	7.83	3.17	18.78	0	
Norway	0.26	0.12	0.61	3.34	1.52	7.70	0	
Portugal	0.17	0.06	0.44	3.40	1.21	8.57	0	
Sweden	0.23	0.10	0.56	5.25	2.27	12.52	0	
Western Europe	0.21	0.11	0.41					
Argentina	0.12	0.04	0.36	17.82	5.70	51.84	1	Region
Chile	0.12	0.04	0.36	6.11	1.95	17.77	1	Region
Uruguay	0.12	0.04	0.36	1.21	0.39	3.51	1	Region
High-income Southern Latin America	0.12	0.04	0.36					
Canada	0.19	0.07	0.52	14.99	5.61	41.21	0	
United States	0.16	0.07	0.38	131.04	54.37	311.63	0	
High-income North America	0.17	0.06	0.42					
High-income	0.12	0.04	0.36					

Antigua and Barbuda	0.08	0.02	0.33	0.03	0.01	0.11	1	Region
Bahamas, The	0.08	0.02	0.33	0.08	0.02	0.36	1	Region
Belize	0.08	0.02	0.33	0.12	0.03	0.53	1	Region
Barbados	0.08	0.02	0.33	0.06	0.01	0.24	1	Region
Cuba	0.08	0.02	0.33	1.93	0.42	8.40	1	Region
Dominican Republic	0.08	0.02	0.33	3.18	0.70	13.84	1	Region
Grenada	0.08	0.02	0.33	0.03	0.01	0.13	1	Region
Guyana	0.08	0.02	0.33	0.24	0.05	1.03	1	Region
Haiti	0.08	0.02	0.33	3.65	0.80	15.87	1	Region
Jamaica	0.08	0.02	0.33	0.70	0.15	3.06	1	Region
St. Lucia	0.08	0.02	0.33	0.04	0.01	0.16	1	Region
Puerto Rico	0.08	0.02	0.33	0.71	0.16	3.08	1	Region
Suriname	0.08	0.02	0.33	0.15	0.03	0.66	1	Region
Trinidad and Tobago	0.08	0.02	0.33	0.28	0.06	1.23	1	Region
St. Vincent and the Grenadines	0.08	0.02	0.33	0.03	0.01	0.12	1	Region
Virgin Islands (U.S.)	0.08	0.02	0.33	0.02	0.00	0.09	1	Region
Caribbean	0.08	0.02	0.33					
Bolivia	0.08	0.02	0.33	3.53	0.78	15.37	1	Region
Ecuador	0.08	0.02	0.33	4.78	1.05	20.83	1	Region
Peru	0.08	0.02	0.33	8.90	1.95	38.74	1	Region
Andean Latin America	0.08	0.02	0.33					
Colombia	0.08	0.02	0.33	11.96	2.63	52.06	1	Region
Costa Rica	0.08	0.02	0.33	1.11	0.24	4.83	1	Region
Guatemala	0.08	0.02	0.33	6.00	1.32	26.13	1	Region

Honduras	0.08	0.02	0.33	3.02	0.66	13.13	1	Region
Mexico	0.08	0.02	0.33	35.49	7.79	154.48	1	Region
Nicaragua	0.08	0.02	0.33	1.84	0.41	8.03	1	Region
Panama	0.08	0.02	0.33	1.13	0.25	4.92	1	Region
El Salvador	0.08	0.02	0.33	1.83	0.40	7.98	1	Region
Venezuela, RB	0.08	0.02	0.33	8.94	1.96	38.89	1	Region
Central Latin America	0.08	0.02	0.33					
Brazil	0.09	0.02	0.36	56.60	13.80	225.34	0	
Paraguay	0.09	0.02	0.37	2.32	0.51	9.90	1	Region
Tropical Latin America	0.09	0.02	0.37					
Latin America and Caribbean	0.08	0.02	0.33					
Afghanistan	0.06	0.03	0.15	12.55	5.21	30.14	1	Region
United Arab Emirates	0.06	0.03	0.15	1.09	0.45	2.63	1	Region
Bahrain	0.06	0.03	0.15	0.24	0.10	0.57	1	Region
Algeria	0.06	0.02	0.18	9.22	3.07	27.08	0	
Egypt	0.06	0.02	0.14	23.37	10.04	56.35	0	
Iran	0.06	0.03	0.15	15.70	6.52	37.70	1	Region
Iraq	0.07	0.02	0.18	12.93	4.80	35.07	0	
Jordan	0.06	0.03	0.15	2.82	1.17	6.79	1	Region
Kuwait	0.06	0.03	0.15	0.71	0.30	1.71	1	Region
Lebanon	0.06	0.03	0.15	1.25	0.52	3.00	1	Region
Libya	0.06	0.03	0.15	1.49	0.62	3.59	1	Region
Morocco	0.05	0.02	0.15	6.55	2.03	19.26	0	
Oman	0.06	0.03	0.15	0.81	0.34	1.96	1	Region
Palestine	0.06	0.03	0.15	1.59	0.66	3.82	1	Region
Qatar	0.06	0.03	0.15	0.31	0.13	0.75	1	Region

Saudi Arabia	0.08	0.03	0.28	8.63	2.97	29.62	0	
Sudan	0.06	0.03	0.15	13.46	5.59	32.32	1	Region
Syria	0.06	0.03	0.15	5.68	2.36	13.64	1	Region
Tunisia	0.06	0.02	0.18	2.26	0.84	6.58	0	
Turkey	0.07	0.03	0.18	18.58	7.14	48.82	0	
Yemen, Rep.	0.06	0.03	0.15	9.20	3.82	22.10	1	Region
North Africa and Middle East	0.06	0.03	0.15					
North Africa and Middle East	0.07	0.02	0.23					
Bangladesh	0.04	0.01	0.14	25.17	7.49	88.63	1	Region
Bhutan	0.04	0.01	0.14	0.12	0.03	0.41	1	Region
India	0.04	0.01	0.13	188.24	56.80	667.06	0	
Nepal	0.04	0.01	0.15	4.82	1.25	18.39	0	
Pakistan	0.04	0.01	0.14	35.12	10.44	123.66	1	Region
South Asia	0.04	0.01	0.14					
South Asia	0.05	0.01	0.20					
China	0.02	0.01	0.06	77.24	29.75	208.95	0	
North Korea	0.02	0.01	0.04	1.12	0.41	3.13	1	Region
Taiwan (Province of China)	0.01	0.00	0.02	0.35	0.12	1.04	0	
East Asia	0.02	0.01	0.04					
Indonesia	0.04	0.01	0.25	40.56	8.20	235.33	1	Region
Cambodia	0.04	0.01	0.25	2.78	0.56	16.10	1	Region
Laos	0.04	0.01	0.25	1.26	0.26	7.32	1	Region
Sri Lanka	0.05	0.01	0.24	2.98	0.58	16.18	0	
Maldives	0.04	0.01	0.25	0.06	0.01	0.32	1	Region
Myanmar	0.04	0.01	0.25	8.24	1.67	47.81	1	Region

Mauritius	0.04	0.01	0.25	0.14	0.03	0.81	1	Region
Malaysia	0.04	0.01	0.25	4.47	0.90	25.93	1	Region
Philippines	0.04	0.01	0.25	18.57	3.75	107.71	1	Region
Seychelles	0.04	0.01	0.25	0.01	0.00	0.07	1	Region
Thailand	0.04	0.01	0.25	7.09	1.43	41.12	1	Region
Timor-Leste	0.04	0.01	0.25	0.31	0.06	1.79	1	Region
Vietnam	0.04	0.01	0.25	12.22	2.47	70.87	1	Region
Southeast Asia	0.04	0.01	0.25					
Fiji	0.04	0.01	0.16	0.13	0.03	0.52	1	Super-region
Micronesia, Fed. Sts.	0.04	0.01	0.16	0.02	0.00	0.07	1	Super-region
Guam	0.04	0.01	0.16	0.02	0.00	0.09	1	Super-region
Kiribati	0.04	0.01	0.16	0.02	0.00	0.08	1	Super-region
Marshall Islands	0.04	0.01	0.16	0.08	0.02	0.32	1	Super-region
Papua New Guinea	0.04	0.01	0.16	1.47	0.32	5.94	1	Super-region
Solomon Islands	0.04	0.01	0.16	0.12	0.03	0.47	1	Super-region
Tonga	0.04	0.01	0.16	0.02	0.00	0.08	1	Super-region
Vanuatu	0.04	0.01	0.16	0.05	0.01	0.20	1	Super-region
Samoa	0.04	0.01	0.16	0.04	0.01	0.14	1	Super-region
Oceania	0.04	0.01	0.16					
Southeast Asia, East Asia, and Oceania	0.04	0.01	0.16					
Angola	0.05	0.01	0.21	7.85	1.06	36.36	1	Super-region
Central African Republic	0.05	0.01	0.21	1.17	0.16	5.43	1	Super-region
Congo, Dem. Rep.	0.05	0.01	0.21	21.18	2.87	98.08	1	Super-region
Congo, Rep.	0.05	0.01	0.21	1.26	0.17	5.85	1	Super-region
Gabon	0.05	0.01	0.21	0.42	0.06	1.95	1	Super-region
Equatorial Guinea	0.05	0.01	0.21	0.27	0.04	1.25	1	Super-region

Central sub-Saharan Africa	0.05	0.01	0.21						
Burundi	0.03	0.00	0.16	1.70	0.27	9.67	1	Super-region	
Comoros	0.03	0.00	0.16	0.12	0.02	0.66	1	Super-region	
Djibouti	0.03	0.00	0.16	0.11	0.02	0.64	1	Super-region	
Eritrea	0.03	0.00	0.16	0.75	0.12	4.27	1	Super-region	
Ethiopia	0.03	0.00	0.16	15.65	2.44	88.88	1	Super-region	
Kenya	0.03	0.00	0.16	7.29	1.13	41.41	1	Super-region	
Madagascar	0.03	0.00	0.16	3.80	0.59	21.57	1	Super-region	
Mozambique	0.03	0.00	0.16	4.71	0.73	26.77	1	Super-region	
Malawi	0.03	0.00	0.16	2.93	0.46	16.65	1	Super-region	
Rwanda	0.03	0.00	0.16	1.76	0.27	10.01	1	Super-region	
Somalia	0.03	0.00	0.16	2.41	0.38	13.71	1	Super-region	
South Sudan	0.03	0.00	0.16	1.88	0.29	10.71	1	Super-region	
Tanzania	0.02	0.00	0.13	7.94	1.30	42.05	0		
Uganda	0.03	0.00	0.16	7.20	1.12	40.93	1	Super-region	
Zambia	0.03	0.00	0.16	2.73	0.43	15.54	1	Super-region	
Eastern sub-Saharan Africa	0.03	0.00	0.16						
Botswana	0.05	0.01	0.21	0.43	0.06	1.99	1	Super-region	
Lesotho	0.05	0.01	0.21	0.48	0.06	2.21	1	Super-region	
Namibia	0.05	0.01	0.21	0.55	0.07	2.55	1	Super-region	
Swaziland	0.05	0.01	0.21	0.30	0.04	1.40	1	Super-region	
South Africa	0.05	0.01	0.21	9.92	1.34	45.94	1	Super-region	
Zimbabwe	0.05	0.01	0.21	3.93	0.53	18.19	1	Super-region	
Southern sub-Saharan Africa	0.05	0.01	0.21						
Benin	0.05	0.01	0.21	2.74	0.37	12.69	1	Super-region	
Burkina Faso	0.05	0.01	0.21	4.95	0.67	22.92	1	Super-region	
Côte d'Ivoire	0.05	0.01	0.21	5.96	0.81	27.60	1	Super-region	

Cameroon	0.05	0.01	0.21	5.89	0.80	27.26	1	Super-region
Cape Verde	0.05	0.01	0.21	0.10	0.01	0.47	1	Super-region
Ghana	0.05	0.01	0.21	6.47	0.88	29.94	1	Super-region
Guinea	0.05	0.01	0.21	3.10	0.42	14.33	1	Super-region
Gambia, The	0.05	0.01	0.21	0.54	0.07	2.51	1	Super-region
Guinea-Bissau	0.05	0.01	0.21	0.44	0.06	2.05	1	Super-region
Liberia	0.05	0.01	0.21	1.14	0.15	5.29	1	Super-region
Mali	0.05	0.01	0.21	4.98	0.67	23.06	1	Super-region
Mauritania	0.05	0.01	0.21	1.02	0.14	4.72	1	Super-region
Niger	0.05	0.01	0.21	6.00	0.81	27.80	1	Super-region
Nigeria	0.05	0.01	0.21	47.74	6.47	221.03	1	Super-region
Senegal	0.05	0.01	0.21	3.88	0.53	17.97	1	Super-region
Sierra Leone	0.05	0.01	0.21	1.84	0.25	8.54	1	Super-region
São Tomé and Príncipe	0.05	0.01	0.21	0.05	0.01	0.23	1	Super-region
Chad	0.05	0.01	0.21	4.00	0.54	18.51	1	Super-region
Togo	0.05	0.01	0.21	1.86	0.25	8.63	1	Super-region
Western sub-Saharan Africa	0.05	0.01	0.21					
Sub-Saharan Africa	0.05	0.01	0.21					
World	0.07	0.02	0.19	1683.21	524.17	4917.82		

Notes: Country with missing data: 0 corresponds to a country with data; 1 corresponds to a country with no existing prevalence data.

eTable 7 Crude lifetime prevalence (physician or dermatologist diagnosed) of psoriasis in adults and number of adults with psoriasis (in thousands) with 95% Uncertainty Intervals (UI), by country, region and super-region in the year 2017.

Country	Region	Super-region	Prevalence	95% Lower UI	95% Upper UI	Number of people with psoriasis	Number of people with psoriasis - 95% Lower UI	Number of people with psoriasis - 95% Upper UI	Country with missing data	Estimate "borrowed" from
Armenia			0.86	0.26	2.80	18.63	5.71	60.93	1	Super-region
Azerbaijan			0.86	0.26	2.80	58.84	18.02	192.39	1	Super-region
Georgia			0.86	0.26	2.80	25.22	7.72	82.46	1	Super-region
Kazakhstan			0.86	0.26	2.80	103.23	31.62	337.51	1	Super-region
Kyrgyzstan			0.86	0.26	2.80	31.18	9.55	101.95	1	Super-region
Mongolia			0.86	0.26	2.80	16.66	5.10	54.46	1	Super-region
Tajikistan			0.86	0.26	2.80	42.25	12.94	138.15	1	Super-region
Turkmenistan			0.86	0.26	2.80	30.14	9.23	98.56	1	Super-region
Uzbekistan			0.86	0.26	2.80	174.17	53.34	569.46	1	Super-region
Central Asia			0.86	0.26	2.80					
Albania			1.83	0.62	5.32	40.10	13.66	116.46	1	Region
Bulgaria			1.83	0.62	5.32	105.90	36.08	307.61	1	Region
Bosnia and Herzegovina			1.83	0.62	5.32	51.27	17.47	148.93	1	Region
Czech Republic			1.83	0.62	5.32	156.46	53.31	454.47	1	Region
Croatia			1.72	0.50	5.61	57.50	16.74	187.70	0	
Hungary			1.83	0.62	5.32	143.60	48.93	417.10	1	Region
Macedonia, FYR			1.83	0.62	5.32	29.47	10.04	85.59	1	Region
Montenegro			1.83	0.62	5.32	8.70	2.97	25.28	1	Region

Poland	2.06	0.61	6.58	630.87	187.62	2016.98	0	
Romania	2.24	0.76	6.73	349.74	117.93	1050.55	0	
Serbia	1.83	0.62	5.32	124.87	42.55	362.70	1	Region
Slovakia	1.83	0.62	5.32	79.50	27.09	230.91	1	Region
Slovenia	1.86	0.57	6.06	31.23	9.57	101.66	0	
Central Europe	1.83	0.62	5.32					
Belarus	0.59	0.16	2.27	44.26	11.81	169.05	1	Region
Estonia	0.59	0.16	2.27	6.17	1.65	23.57	1	Region
Lithuania	0.59	0.16	2.27	13.73	3.66	52.44	1	Region
Latvia	0.59	0.16	2.27	9.32	2.49	35.61	1	Region
Moldova	0.59	0.16	2.27	19.00	5.07	72.58	1	Region
Russia	0.51	0.15	1.75	573.72	173.72	1969.63	0	
Ukraine	0.59	0.16	2.27	210.48	56.14	803.85	1	Region
Eastern Europe	0.59	0.16	2.27					
Central Europe, Eastern Europe, and Central Asia	0.86	0.26	2.80					
Brunei	0.76	0.20	2.44	2.24	0.59	7.22	1	Region
Japan	0.68	0.17	2.44	719.60	181.66	2566.45	0	
South Korea	0.70	0.21	2.30	287.76	84.66	945.82	0	
Singapore	0.76	0.20	2.44	34.07	8.93	109.89	1	Region
High-income Asia Pacific	0.76	0.20	2.44					
Australia	2.38	0.78	7.01	436.40	143.60	1284.56	0	
New Zealand	1.99	0.64	6.60	77.36	24.75	256.26	1	Region
Australasia	1.99	0.64	6.60					
Austria	1.92	1.07	3.46	135.65	75.69	244.47	1	Region
Belgium	1.92	1.07	3.46	169.77	94.73	305.97	1	Region
Switzerland	1.92	1.07	3.46	130.21	72.66	234.68	1	Region
Cyprus	1.92	1.07	3.46	17.37	9.69	31.31	1	Region

Germany	2.20	1.12	4.38	1482.72	757.28	2947.76	0	
Denmark	2.26	1.15	4.58	100.32	51.02	203.19	0	
Spain	1.40	0.63	2.95	524.49	234.74	1104.94	0	
Finland	1.92	1.07	3.46	82.92	46.27	149.44	1	Region
France	1.94	0.93	4.04	993.96	478.96	2072.73	0	
United Kingdom	1.92	0.98	3.70	978.64	501.10	1882.74	0	
Greece	1.92	1.07	3.46	173.07	96.57	311.92	1	Region
Ireland	1.92	1.07	3.46	66.14	36.91	119.21	1	Region
Iceland	1.92	1.07	3.46	4.70	2.62	8.48	1	Region
Israel	2.28	0.98	5.65	122.40	52.47	302.51	0	
Italy	2.00	1.00	4.14	971.10	483.28	2007.99	0	
Luxembourg	1.92	1.07	3.46	8.69	4.85	15.67	1	Region
Malta	1.92	1.07	3.46	6.64	3.71	11.97	1	Region
Netherlands	1.81	0.80	3.83	242.69	107.16	514.54	0	
Norway	2.36	1.10	5.04	95.07	44.27	203.32	0	
Portugal	1.56	0.60	3.58	130.74	50.05	299.87	0	
Sweden	2.10	0.94	4.74	160.96	71.85	363.28	0	
Western Europe	1.92	1.07	3.46					
Argentina	1.10	0.36	2.96	327.54	106.38	881.24	1	Super-region
Chile	1.10	0.36	2.96	143.95	46.75	387.29	1	Super-region
Uruguay	1.10	0.36	2.96	27.25	8.85	73.32	1	Super-region
High-income Southern Latin America	1.10	0.36	2.96					
Canada	1.70	0.71	4.06	487.39	203.66	1166.65	0	
United States	1.42	0.62	3.17	3436.39	1502.91	7664.55	0	
High-income North America	1.50	0.63	3.60					

High-income	1.10	0.36	2.96						
Antigua and Barbuda	0.69	0.15	2.94	0.46	0.10	1.97	1	Super-region	
Bahamas, The	0.69	0.15	2.94	1.97	0.44	8.41	1	Super-region	
Belize	0.69	0.15	2.94	1.49	0.33	6.38	1	Super-region	
Barbados	0.69	0.15	2.94	1.47	0.33	6.30	1	Super-region	
Cuba	0.69	0.15	2.94	61.71	13.65	263.97	1	Super-region	
Dominican Republic	0.69	0.15	2.94	45.58	10.08	194.99	1	Super-region	
Grenada	0.69	0.15	2.94	0.49	0.11	2.09	1	Super-region	
Guyana	0.69	0.15	2.94	3.23	0.71	13.80	1	Super-region	
Haiti	0.69	0.15	2.94	42.88	9.48	183.42	1	Super-region	
Jamaica	0.69	0.15	2.94	13.58	3.00	58.07	1	Super-region	
St. Lucia	0.69	0.15	2.94	0.90	0.20	3.85	1	Super-region	
Puerto Rico	0.69	0.15	2.94	18.87	4.17	80.72	1	Super-region	
Suriname	0.69	0.15	2.94	2.50	0.55	10.68	1	Super-region	
Trinidad and Tobago	0.69	0.15	2.94	6.88	1.52	29.42	1	Super-region	
St. Vincent and the Grenadines	0.69	0.15	2.94	0.50	0.11	2.15	1	Super-region	
Virgin Islands (U.S.)	0.69	0.15	2.94	0.53	0.12	2.27	1	Super-region	
Caribbean	0.69	0.15	2.94						
Bolivia	0.69	0.15	2.94	44.39	9.82	189.90	1	Super-region	
Ecuador	0.69	0.15	2.94	71.50	15.82	305.87	1	Super-region	
Peru	0.69	0.15	2.94	141.56	31.31	605.55	1	Super-region	
Andean Latin America	0.69	0.15	2.94						
Colombia	0.69	0.15	2.94	230.36	50.96	985.43	1	Super-region	
Costa Rica	0.69	0.15	2.94	23.81	5.27	101.85	1	Super-region	
Guatemala	0.69	0.15	2.94	62.59	13.84	267.74	1	Super-region	
Honduras	0.69	0.15	2.94	36.72	8.12	157.07	1	Super-region	
Mexico	0.69	0.15	2.94	570.61	126.22	2440.92	1	Super-region	
Nicaragua	0.69	0.15	2.94	26.26	5.81	112.32	1	Super-region	
Panama	0.69	0.15	2.94	18.08	4.00	77.34	1	Super-region	
El Salvador	0.69	0.15	2.94	27.45	6.07	117.41	1	Super-region	

Venezuela, RB	0.69	0.15	2.94	139.93	30.95	598.58	1	Super-region
Central Latin America	0.69	0.15	2.94					
Brazil	0.81	0.20	3.25	1187.23	292.09	4761.19	0	
Paraguay	0.78	0.17	3.35	32.08	7.07	138.61	1	Region
Tropical Latin America	0.78	0.17	3.35					
Latin America and Caribbean	0.69	0.15	2.94					
Afghanistan	0.57	0.25	1.36	91.52	39.12	216.34	1	Region
United Arab Emirates	0.57	0.25	1.36	44.14	18.87	104.35	1	Region
Bahrain	0.57	0.25	1.36	6.41	2.74	15.16	1	Region
Algeria	0.55	0.19	1.64	145.22	49.53	431.19	0	
Egypt	0.51	0.21	1.31	288.75	116.67	742.01	0	
Iran	0.57	0.25	1.36	325.16	138.98	768.67	1	Region
Iraq	0.60	0.22	1.66	112.25	41.88	313.46	0	
Jordan	0.57	0.25	1.36	30.38	12.98	71.81	1	Region
Kuwait	0.57	0.25	1.36	17.34	7.41	40.98	1	Region
Lebanon	0.57	0.25	1.36	23.71	10.13	56.04	1	Region
Libya	0.57	0.25	1.36	23.19	9.91	54.82	1	Region
Morocco	0.46	0.15	1.33	106.12	33.50	305.33	0	
Oman	0.57	0.25	1.36	19.32	8.26	45.66	1	Region
Palestine	0.57	0.25	1.36	13.98	5.97	33.04	1	Region
Qatar	0.57	0.25	1.36	12.36	5.28	29.21	1	Region
Saudi Arabia	0.73	0.24	2.69	162.78	54.10	600.40	0	
Sudan	0.57	0.25	1.36	112.08	47.91	264.96	1	Region
Syria	0.57	0.25	1.36	53.98	23.07	127.61	1	Region
Tunisia	0.57	0.22	1.60	45.14	17.25	127.48	0	
Turkey	0.62	0.25	1.57	332.45	134.40	842.50	0	
Yemen, Rep.	0.57	0.25	1.36	79.71	34.07	188.43	1	Region

North Africa and Middle East	0.57	0.25	1.36						
North Africa and Middle East	0.61	0.16	2.03						
Bangladesh	0.36	0.10	1.30	364.42	101.04	1322.84	1	Region	
Bhutan	0.36	0.10	1.30	1.85	0.51	6.71	1	Region	
India	0.34	0.10	1.19	2857.57	828.31	10039.35	0		
Nepal	0.35	0.09	1.29	59.09	14.93	219.19	0		
Pakistan	0.36	0.10	1.30	391.21	108.47	1420.09	1	Region	
South Asia	0.36	0.10	1.30						
South Asia	0.48	0.11	1.79						
China	0.21	0.08	0.56	2291.28	868.69	6068.04	0		
North Korea	0.14	0.05	0.40	25.58	9.31	72.55	1	Region	
Taiwan (Province of China)	0.07	0.02	0.21	13.05	4.51	39.69	0		
East Asia	0.14	0.05	0.40						
Indonesia	0.38	0.08	2.17	644.59	130.11	3662.17	1	Region	
Cambodia	0.38	0.08	2.17	36.25	7.32	205.95	1	Region	
Laos	0.38	0.08	2.17	14.88	3.00	84.55	1	Region	
Sri Lanka	0.40	0.08	2.07	57.57	11.25	295.16	0		
Maldives	0.38	0.08	2.17	1.16	0.23	6.61	1	Region	
Myanmar	0.38	0.08	2.17	129.96	26.23	738.33	1	Region	
Mauritius	0.38	0.08	2.17	3.58	0.72	20.34	1	Region	
Malaysia	0.38	0.08	2.17	80.70	16.29	458.48	1	Region	
Philippines	0.38	0.08	2.17	234.29	47.29	1331.09	1	Region	
Seychelles	0.38	0.08	2.17	0.26	0.05	1.47	1	Region	
Thailand	0.38	0.08	2.17	200.07	40.38	1136.68	1	Region	
Timor-Leste	0.38	0.08	2.17	2.19	0.44	12.45	1	Region	
Vietnam	0.38	0.08	2.17	255.34	51.54	1450.71	1	Region	
Southeast Asia	0.38	0.08	2.17						

Fiji	0.34	0.08	1.38	1.96	0.44	7.85	1	Super-region
Micronesia, Fed. Sts.	0.34	0.08	1.38	0.19	0.04	0.77	1	Super-region
Guam	0.34	0.08	1.38	0.37	0.08	1.50	1	Super-region
Kiribati	0.34	0.08	1.38	0.22	0.05	0.89	1	Super-region
Marshall Islands	0.34	0.08	1.38	1.10	0.25	4.39	1	Super-region
Papua New Guinea	0.34	0.08	1.38	15.21	3.44	60.93	1	Super-region
Solomon Islands	0.34	0.08	1.38	1.06	0.24	4.23	1	Super-region
Tonga	0.34	0.08	1.38	0.20	0.04	0.78	1	Super-region
Vanuatu	0.34	0.08	1.38	0.52	0.12	2.06	1	Super-region
Samoa	0.34	0.08	1.38	0.36	0.08	1.45	1	Super-region
Oceania	0.34	0.08	1.38					
Southeast Asia, East Asia, and Oceania	0.34	0.08	1.38					
Angola	0.41	0.06	1.86	52.29	7.01	236.64	1	Super-region
Central African Republic	0.41	0.06	1.86	8.68	1.16	39.26	1	Super-region
Congo, Dem. Rep.	0.41	0.06	1.86	145.14	19.45	656.87	1	Super-region
Congo, Rep.	0.41	0.06	1.86	10.33	1.38	46.77	1	Super-region
Gabon	0.41	0.06	1.86	4.58	0.61	20.73	1	Super-region
Equatorial Guinea	0.41	0.06	1.86	2.80	0.37	12.67	1	Super-region
Central sub-Saharan Africa	0.41	0.06	1.86					
Burundi	0.26	0.04	1.45	12.49	1.88	70.79	1	Super-region
Comoros	0.26	0.04	1.45	1.04	0.16	5.87	1	Super-region
Djibouti	0.26	0.04	1.45	1.43	0.22	8.10	1	Super-region
Eritrea	0.26	0.04	1.45	6.20	0.93	35.17	1	Super-region
Ethiopia	0.26	0.04	1.45	127.79	19.25	724.43	1	Super-region
Kenya	0.26	0.04	1.45	61.58	9.28	349.11	1	Super-region

Madagascar	0.26	0.04	1.45	31.27	4.71	177.29	1	Super-region
Mozambique	0.26	0.04	1.45	33.52	5.05	190.03	1	Super-region
Malawi	0.26	0.04	1.45	21.29	3.21	120.69	1	Super-region
Rwanda	0.26	0.04	1.45	15.38	2.32	87.21	1	Super-region
Somalia	0.26	0.04	1.45	16.01	2.41	90.77	1	Super-region
South Sudan	0.26	0.04	1.45	15.22	2.29	86.30	1	Super-region
Tanzania	0.22	0.04	1.21	57.02	9.88	309.43	0	
Uganda	0.26	0.04	1.45	44.90	6.76	254.52	1	Super-region
Zambia	0.26	0.04	1.45	19.14	2.88	108.51	1	Super-region
Eastern sub-Saharan Africa	0.26	0.04	1.45					
Botswana	0.41	0.06	1.86	5.59	0.75	25.29	1	Super-region
Lesotho	0.41	0.06	1.86	4.92	0.66	22.28	1	Super-region
Namibia	0.41	0.06	1.86	5.49	0.74	24.85	1	Super-region
Swaziland	0.41	0.06	1.86	2.92	0.39	13.21	1	Super-region
South Africa	0.41	0.06	1.86	144.59	19.37	654.39	1	Super-region
Zimbabwe	0.41	0.06	1.86	32.86	4.40	148.72	1	Super-region
Southern sub-Saharan Africa	0.41	0.06	1.86					
Benin	0.41	0.06	1.86	21.47	2.88	97.15	1	Super-region
Burkina Faso	0.41	0.06	1.86	34.69	4.65	156.99	1	Super-region
Côte d'Ivoire	0.41	0.06	1.86	46.64	6.25	211.08	1	Super-region
Cameroon	0.41	0.06	1.86	46.28	6.20	209.44	1	Super-region
Cape Verde	0.41	0.06	1.86	1.34	0.18	6.05	1	Super-region
Ghana	0.41	0.06	1.86	60.78	8.14	275.08	1	Super-region
Guinea	0.41	0.06	1.86	24.63	3.30	111.47	1	Super-region
Gambia, The	0.41	0.06	1.86	3.78	0.51	17.10	1	Super-region
Guinea-Bissau	0.41	0.06	1.86	3.69	0.49	16.69	1	Super-region
Liberia	0.41	0.06	1.86	9.23	1.24	41.80	1	Super-region
Mali	0.41	0.06	1.86	31.73	4.25	143.58	1	Super-region

Mauritania	0.41	0.06	1.86	9.07	1.22	41.05	1	Super-region
Niger	0.41	0.06	1.86	34.65	4.64	156.83	1	Super-region
Nigeria	0.41	0.06	1.86	358.28	48.01	1621.52	1	Super-region
Senegal	0.41	0.06	1.86	30.48	4.08	137.96	1	Super-region
Sierra Leone	0.41	0.06	1.86	14.59	1.96	66.05	1	Super-region
São Tomé and Príncipe	0.41	0.06	1.86	0.39	0.05	1.75	1	Super-region
Chad	0.41	0.06	1.86	25.53	3.42	115.55	1	Super-region
Togo	0.41	0.06	1.86	15.41	2.07	69.75	1	Super-region
Western sub-Saharan Africa	0.41	0.06	1.86					
Sub-Saharan Africa	0.41	0.06	1.86					
World	0.59	0.19	1.66	29476.12	9343.63	83161.72		

Notes: Country with missing data: 0 corresponds to a country with data; 1 corresponds to a country with no existing prevalence data.

eTable 8 Crude lifetime prevalence (physician or dermatologist diagnosed) of psoriasis for the overall population and number of people with psoriasis (in thousands) with 95% Uncertainty Intervals (UI), by country, region and super-region in the year 2017.

Country	Region	Super-region	Prevalence	95% Lower UI	95% Upper UI	Number of people with psoriasis	Number of people with psoriasis - 95% Lower UI	Number of people with psoriasis - 95% Upper UI	Country with missing data	Estimate "borrowed" from
Armenia			0.68	0.22	2.18	19.88	6.37	63.80	1	Super-region
Azerbaijan			0.68	0.22	2.18	66.60	21.36	213.78	1	Super-region
Georgia			0.68	0.22	2.18	26.52	8.51	85.14	1	Super-region
Kazakhstan			0.68	0.22	2.18	123.37	39.57	396.01	1	Super-region
Kyrgyzstan			0.68	0.22	2.18	40.97	13.14	131.52	1	Super-region
Mongolia			0.68	0.22	2.18	20.84	6.68	66.89	1	Super-region
Tajikistan			0.68	0.22	2.18	60.47	19.39	194.10	1	Super-region
Turkmenistan			0.68	0.22	2.18	39.03	12.52	125.29	1	Super-region
Uzbekistan			0.68	0.22	2.18	216.27	69.36	694.21	1	Super-region
Central Asia			0.68	0.22	2.18					
Albania			1.45	0.49	4.08	42.47	14.45	119.62	1	Region
Bulgaria			1.45	0.49	4.08	102.73	34.94	289.32	1	Region
Bosnia and Herzegovina			1.45	0.49	4.08	50.81	17.28	143.11	1	Region
Czech Republic			1.45	0.49	4.08	153.96	52.36	433.61	1	Region
Croatia			1.36	0.40	4.48	56.95	16.63	187.90	0	
Hungary			1.45	0.49	4.08	140.95	47.94	396.97	1	Region
Macedonia, FYR			1.45	0.49	4.08	30.18	10.26	84.99	1	Region
Montenegro			1.45	0.49	4.08	9.12	3.10	25.69	1	Region
Poland			1.63	0.50	5.32	622.01	190.29	2031.65	0	
Romania			1.77	0.60	5.27	348.80	118.33	1037.50	0	
Serbia			1.45	0.49	4.08	127.47	43.35	358.99	1	Region

Slovakia	1.45	0.49	4.08	78.99	26.86	222.46	1	Region
Slovenia	1.47	0.45	4.68	30.65	9.31	97.29	0	
Central Europe	1.45	0.49	4.08					
Belarus	0.47	0.13	1.75	44.54	12.51	165.44	1	Region
Estonia	0.47	0.13	1.75	6.17	1.73	22.91	1	Region
Lithuania	0.47	0.13	1.75	13.59	3.82	50.47	1	Region
Latvia	0.47	0.13	1.75	9.18	2.58	34.09	1	Region
Moldova	0.47	0.13	1.75	19.06	5.35	70.79	1	Region
Russia	0.40	0.13	1.24	582.07	191.27	1784.82	0	
Ukraine	0.47	0.13	1.75	208.07	58.42	772.76	1	Region
Eastern Europe	0.47	0.13	1.75					
	Central Europe, Eastern Europe, and Central Asia	0.68	0.22	2.18				
Brunei	0.60	0.16	1.91	2.57	0.70	8.21	1	Region
Japan	0.54	0.14	1.94	690.23	182.77	2472.68	0	
South Korea	0.55	0.17	1.83	281.77	85.38	932.52	0	
Singapore	0.60	0.16	1.91	34.14	9.31	108.95	1	Region
High-income Asia Pacific	0.60	0.16	1.91					
Australia	1.88	0.59	6.10	460.86	143.65	1492.42	0	
New Zealand	1.58	0.50	5.73	85.02	26.96	308.90	1	Region
Australasia	1.58	0.50	5.73					
Austria	1.52	0.87	2.74	132.70	75.96	239.12	1	Region
Belgium	1.52	0.87	2.74	173.59	99.36	312.79	1	Region
Switzerland	1.52	0.87	2.74	128.74	73.69	231.97	1	Region
Cyprus	1.52	0.87	2.74	17.92	10.26	32.29	1	Region
Germany	1.74	0.91	3.40	1430.26	743.24	2793.42	0	

Denmark	1.79	0.91	3.61	102.57	52.46	207.24	0	
Spain	1.11	0.52	2.24	514.48	242.70	1036.19	0	
Finland	1.52	0.87	2.74	83.89	48.02	151.16	1	Region
France	1.53	0.75	3.18	1040.19	506.51	2152.80	0	
United Kingdom	1.52	0.78	2.91	1009.33	517.82	1930.27	0	
Greece	1.52	0.87	2.74	169.48	97.01	305.38	1	Region
Ireland	1.52	0.87	2.74	72.34	41.41	130.36	1	Region
Iceland	1.52	0.87	2.74	5.06	2.90	9.11	1	Region
Israel	1.81	0.83	4.44	150.44	69.05	369.17	0	
Italy	1.58	0.78	3.30	939.79	465.56	1959.93	0	
Luxembourg	1.52	0.87	2.74	8.87	5.08	15.98	1	Region
Malta	1.52	0.87	2.74	6.55	3.75	11.80	1	Region
Netherlands	1.43	0.65	3.09	247.48	112.47	534.95	0	
Norway	1.86	0.94	3.97	98.88	50.04	210.39	0	
Portugal	1.23	0.46	2.82	127.54	47.94	290.82	0	
Sweden	1.66	0.77	3.64	164.54	76.71	360.50	0	
Western Europe	1.52	0.87	2.74					
Argentina	0.87	0.29	2.41	385.43	129.40	1068.67	1	Super-region
Chile	0.87	0.29	2.41	157.19	52.77	435.83	1	Super-region
Uruguay	0.87	0.29	2.41	30.12	10.11	83.52	1	Super-region
High-income Southern Latin America	0.87	0.29	2.41					
Canada	1.34	0.54	3.41	491.86	198.52	1250.53	0	
United States	1.12	0.48	2.55	3647.39	1564.76	8263.01	0	
High-income North America	1.18	0.48	2.90					
High-income	0.87	0.29	2.41					
Antigua and Barbuda	0.54	0.13	2.37	0.54	0.13	2.37	1	Super-region
Bahamas, The	0.54	0.13	2.37	2.14	0.51	9.34	1	Super-region
Belize	0.54	0.13	2.37	2.04	0.49	8.86	1	Super-region

Barbados	0.54	0.13	2.37	1.56	0.37	6.78	1	Super-region
Cuba	0.54	0.13	2.37	62.50	14.91	272.18	1	Super-region
Dominican Republic	0.54	0.13	2.37	58.59	13.98	255.16	1	Super-region
Grenada	0.54	0.13	2.37	0.59	0.14	2.58	1	Super-region
Guyana	0.54	0.13	2.37	4.23	1.01	18.42	1	Super-region
Haiti	0.54	0.13	2.37	59.75	14.26	260.23	1	Super-region
Jamaica	0.54	0.13	2.37	15.73	3.75	68.50	1	Super-region
St. Lucia	0.54	0.13	2.37	0.98	0.23	4.27	1	Super-region
Puerto Rico	0.54	0.13	2.37	19.95	4.76	86.86	1	Super-region
Suriname	0.54	0.13	2.37	3.05	0.73	13.30	1	Super-region
Trinidad and Tobago	0.54	0.13	2.37	7.45	1.78	32.45	1	Super-region
St. Vincent and the Grenadines	0.54	0.13	2.37	0.59	0.14	2.56	1	Super-region
Virgin Islands (U.S.)	0.54	0.13	2.37	0.57	0.14	2.49	1	Super-region
Caribbean	0.54	0.13	2.37					
Bolivia	0.54	0.13	2.37	60.14	14.35	261.92	1	Super-region
Ecuador	0.54	0.13	2.37	90.47	21.59	394.00	1	Super-region
Peru	0.54	0.13	2.37	175.05	41.78	762.38	1	Super-region
Andean Latin America	0.54	0.13	2.37					
Colombia	0.54	0.13	2.37	267.01	63.72	1162.85	1	Super-region
Costa Rica	0.54	0.13	2.37	26.70	6.37	116.28	1	Super-region
Guatemala	0.54	0.13	2.37	92.05	21.97	400.90	1	Super-region
Honduras	0.54	0.13	2.37	50.42	12.03	219.59	1	Super-region
Mexico	0.54	0.13	2.37	702.90	167.74	3061.21	1	Super-region
Nicaragua	0.54	0.13	2.37	33.84	8.08	147.40	1	Super-region
Panama	0.54	0.13	2.37	22.31	5.32	97.17	1	Super-region
El Salvador	0.54	0.13	2.37	34.71	8.28	151.16	1	Super-region
Venezuela, RB	0.54	0.13	2.37	174.02	41.53	757.86	1	Super-region

Central Latin America	0.54	0.13	2.37						
Brazil	0.64	0.17	2.46	1340.37	355.64	5157.68	0		
Paraguay	0.61	0.14	2.58	41.81	9.50	175.51	1	Region	
Tropical Latin America	0.61	0.14	2.58						
Latin America and Caribbean	0.54	0.13	2.37						
Afghanistan	0.45	0.21	1.02	161.29	73.19	362.56	1	Region	
United Arab Emirates	0.45	0.21	1.02	42.67	19.36	95.92	1	Region	
Bahrain	0.45	0.21	1.02	6.77	3.07	15.22	1	Region	
Algeria	0.44	0.16	1.23	180.21	64.55	507.19	0		
Egypt	0.40	0.16	1.00	393.98	157.00	973.62	0		
Iran	0.45	0.21	1.02	368.47	167.21	828.29	1	Region	
Iraq	0.47	0.19	1.24	180.37	71.09	476.21	0		
Jordan	0.45	0.21	1.02	44.05	19.99	99.01	1	Region	
Kuwait	0.45	0.21	1.02	18.77	8.52	42.19	1	Region	
Lebanon	0.45	0.21	1.02	27.60	12.53	62.05	1	Region	
Libya	0.45	0.21	1.02	28.93	13.13	65.04	1	Region	
Morocco	0.36	0.12	1.03	130.39	43.21	366.78	0		
Oman	0.45	0.21	1.02	21.05	9.55	47.32	1	Region	
Palestine	0.45	0.21	1.02	22.33	10.13	50.20	1	Region	
Qatar	0.45	0.21	1.02	11.98	5.44	26.93	1	Region	
Saudi Arabia	0.58	0.19	2.09	189.96	62.89	689.47	0		
Sudan	0.45	0.21	1.02	184.00	83.50	413.62	1	Region	
Syria	0.45	0.21	1.02	82.93	37.63	186.42	1	Region	
Tunisia	0.45	0.18	1.16	51.72	20.93	133.63	0		
Turkey	0.49	0.21	1.19	394.64	167.39	962.76	0		
Yemen, Rep.	0.45	0.21	1.02	128.24	58.20	288.28	1	Region	
North Africa and Middle East	0.45	0.21	1.02						

	North Africa and Middle East	0.48	0.13	1.56					
Bangladesh		0.28	0.09	0.97	466.67	142.79	1590.23	1	Region
Bhutan		0.28	0.09	0.97	2.28	0.70	7.77	1	Region
India		0.27	0.08	0.92	3594.50	1112.36	12263.83	0	
Nepal		0.28	0.07	0.98	80.92	21.80	288.15	0	
Pakistan		0.28	0.09	0.97	558.34	170.84	1902.61	1	Region
	South Asia	0.28	0.09	0.97					
	South Asia	0.38	0.09	1.46					
China		0.17	0.07	0.42	2360.16	947.17	5947.50	0	
North Korea		0.11	0.04	0.30	28.18	11.04	77.68	1	Region
Taiwan (Province of China)		0.05	0.02	0.16	12.80	4.46	38.15	0	
	East Asia	0.11	0.04	0.30					
Indonesia		0.30	0.06	1.65	797.38	164.11	4365.95	1	Region
Cambodia		0.30	0.06	1.65	48.35	9.95	264.71	1	Region
Laos		0.30	0.06	1.65	20.72	4.26	113.44	1	Region
Sri Lanka		0.32	0.06	1.68	66.68	13.56	349.72	0	
Maldives		0.30	0.06	1.65	1.32	0.27	7.21	1	Region
Myanmar		0.30	0.06	1.65	161.20	33.18	882.66	1	Region
Mauritius		0.30	0.06	1.65	3.82	0.79	20.90	1	Region
Malaysia		0.30	0.06	1.65	95.52	19.66	523.00	1	Region
Philippines		0.30	0.06	1.65	316.90	65.22	1735.13	1	Region
Seychelles		0.30	0.06	1.65	0.29	0.06	1.57	1	Region
Thailand		0.30	0.06	1.65	208.53	42.92	1141.76	1	Region
Timor-Leste		0.30	0.06	1.65	3.91	0.81	21.43	1	Region
Vietnam		0.30	0.06	1.65	288.58	59.39	1580.07	1	Region
	Southeast Asia	0.30	0.06	1.65					
Fiji		0.27	0.06	1.04	2.46	0.57	9.45	1	Super-region
Micronesia, Fed. Sts.		0.27	0.06	1.04	0.28	0.07	1.09	1	Super-region

Guam	0.27	0.06	1.04	0.45	0.10	1.71	1	Super-region
Kiribati	0.27	0.06	1.04	0.32	0.07	1.23	1	Super-region
Marshall Islands	0.27	0.06	1.04	1.43	0.33	5.50	1	Super-region
Papua New Guinea	0.27	0.06	1.04	22.44	5.21	86.21	1	Super-region
Solomon Islands	0.27	0.06	1.04	1.66	0.39	6.38	1	Super-region
Tonga	0.27	0.06	1.04	0.29	0.07	1.13	1	Super-region
Vanuatu	0.27	0.06	1.04	0.75	0.17	2.89	1	Super-region
Samoa	0.27	0.06	1.04	0.54	0.12	2.06	1	Super-region
Oceania	0.27	0.06	1.04					
	Southeast Asia, East Asia, and Oceania	0.27	0.06	1.04				
Angola	0.33	0.05	1.44	96.99	13.89	428.78	1	Super-region
Central African Republic	0.33	0.05	1.44	15.17	2.17	67.06	1	Super-region
Congo, Dem. Rep.	0.33	0.05	1.44	264.89	37.94	1171.02	1	Super-region
Congo, Rep.	0.33	0.05	1.44	17.13	2.45	75.74	1	Super-region
Gabon	0.33	0.05	1.44	6.60	0.95	29.18	1	Super-region
Equatorial Guinea	0.33	0.05	1.44	4.12	0.59	18.23	1	Super-region
	Central sub- Saharan Africa	0.33	0.05	1.44				
Burundi	0.20	0.03	1.04	21.94	3.45	112.69	1	Super-region
Comoros	0.20	0.03	1.04	1.64	0.26	8.44	1	Super-region
Djibouti	0.20	0.03	1.04	1.93	0.30	9.92	1	Super-region
Eritrea	0.20	0.03	1.04	10.24	1.61	52.57	1	Super-region
Ethiopia	0.20	0.03	1.04	211.94	33.37	1088.57	1	Super-region
Kenya	0.20	0.03	1.04	100.36	15.80	515.48	1	Super-region
Madagascar	0.20	0.03	1.04	51.64	8.13	265.21	1	Super-region
Mozambique	0.20	0.03	1.04	59.91	9.43	307.69	1	Super-region
Malawi	0.20	0.03	1.04	37.60	5.92	193.14	1	Super-region
Rwanda	0.20	0.03	1.04	24.65	3.88	126.62	1	Super-region
Somalia	0.20	0.03	1.04	29.77	4.69	152.89	1	Super-region

South Sudan	0.20	0.03	1.04	25.39	4.00	130.43	1	Super-region
Tanzania	0.18	0.03	0.86	101.37	17.82	495.58	0	
Uganda	0.20	0.03	1.04	86.55	13.63	444.57	1	Super-region
Zambia	0.20	0.03	1.04	34.52	5.44	177.28	1	Super-region
Eastern sub-Saharan Africa	0.20	0.03	1.04					
Botswana	0.33	0.05	1.44	7.46	1.07	33.00	1	Super-region
Lesotho	0.33	0.05	1.44	7.28	1.04	32.16	1	Super-region
Namibia	0.33	0.05	1.44	8.25	1.18	36.45	1	Super-region
Swaziland	0.33	0.05	1.44	4.45	0.64	19.67	1	Super-region
South Africa	0.33	0.05	1.44	184.70	26.45	816.53	1	Super-region
Zimbabwe	0.33	0.05	1.44	53.83	7.71	237.98	1	Super-region
Southern sub-Saharan Africa	0.33	0.05	1.44					
Benin	0.33	0.05	1.44	36.40	5.21	160.93	1	Super-region
Burkina Faso	0.33	0.05	1.44	62.51	8.95	276.33	1	Super-region
Côte d'Ivoire	0.33	0.05	1.44	79.12	11.33	349.78	1	Super-region
Cameroon	0.33	0.05	1.44	78.33	11.22	346.27	1	Super-region
Cape Verde	0.33	0.05	1.44	1.78	0.26	7.88	1	Super-region
Ghana	0.33	0.05	1.44	93.89	13.45	415.09	1	Super-region
Guinea	0.33	0.05	1.44	41.42	5.93	183.10	1	Super-region
Gambia, The	0.33	0.05	1.44	6.84	0.98	30.22	1	Super-region
Guinea-Bissau	0.33	0.05	1.44	6.06	0.87	26.79	1	Super-region
Liberia	0.33	0.05	1.44	15.41	2.21	68.11	1	Super-region
Mali	0.33	0.05	1.44	60.38	8.65	266.93	1	Super-region
Mauritania	0.33	0.05	1.44	14.40	2.06	63.65	1	Super-region
Niger	0.33	0.05	1.44	69.94	10.02	309.20	1	Super-region
Nigeria	0.33	0.05	1.44	621.64	89.03	2748.16	1	Super-region
Senegal	0.33	0.05	1.44	51.62	7.39	228.19	1	Super-region
Sierra Leone	0.33	0.05	1.44	24.61	3.52	108.80	1	Super-region

São Tomé and Príncipe	0.33	0.05	1.44	0.66	0.10	2.94	1	Super-region
Chad	0.33	0.05	1.44	48.52	6.95	214.48	1	Super-region
Togo	0.33	0.05	1.44	25.39	3.64	112.25	1	Super-region
Western sub-Saharan Africa	0.33	0.05	1.44					
Sub-Saharan Africa	0.33	0.05	1.44					
World	0.47	0.15	1.25	35246.55	11561.88	94518.01		

Notes: Country with missing data: 0 corresponds to a country with data; 1 corresponds to a country with no existing prevalence data.

eTable 9 Crude lifetime prevalence (self-reported diagnosis) of psoriasis in children and number of people with psoriasis (in thousands) with 95% Uncertainty Intervals (UI), by country, region and super-region in the year 2017.

Country	Region	Super-region	Prevalence	95% Lower UI	95% Upper UI	Number of people with psoriasis	Number of people with psoriasis - 95% Lower UI	Number of people with psoriasis - 95% Upper UI	Country with missing data	Estimate "borrowed" from
Armenia			0.18	0.05	0.66	1.37	0.38	5.01	1	Super-region
Azerbaijan			0.18	0.05	0.66	5.36	1.50	19.57	1	Super-region
Georgia			0.18	0.05	0.66	1.76	0.49	6.41	1	Super-region
Kazakhstan			0.18	0.05	0.66	11.15	3.12	40.70	1	Super-region
Kyrgyzstan			0.18	0.05	0.66	4.36	1.22	15.91	1	Super-region
Mongolia			0.18	0.05	0.66	2.05	0.57	7.48	1	Super-region
Tajikistan			0.18	0.05	0.66	7.23	2.02	26.40	1	Super-region
Turkmenistan			0.18	0.05	0.66	4.06	1.14	14.82	1	Super-region
Uzbekistan			0.18	0.05	0.66	20.98	5.87	76.60	1	Super-region
Central Asia			0.18	0.05	0.66					
Albania			0.39	0.12	1.17	2.87	0.92	8.68	1	Region
Bulgaria			0.39	0.12	1.17	5.06	1.62	15.29	1	Region
Bosnia and Herzegovina			0.39	0.12	1.17	2.74	0.87	8.27	1	Region
Czech Republic			0.39	0.12	1.17	8.06	2.58	24.35	1	Region
Croatia			0.36	0.09	1.29	3.06	0.80	10.85	0	
Hungary			0.39	0.12	1.17	7.31	2.33	22.07	1	Region
Macedonia, FYR			0.39	0.12	1.17	1.83	0.59	5.54	1	Region
Montenegro			0.39	0.12	1.17	0.60	0.19	1.80	1	Region
Poland			0.44	0.12	1.59	32.83	8.68	119.70	0	

Romania	0.47	0.14	1.52	19.27	5.70	61.87	0	
Serbia	0.39	0.12	1.17	7.66	2.45	23.15	1	Region
Slovakia	0.39	0.12	1.17	4.30	1.37	12.99	1	Region
Slovenia	0.39	0.11	1.33	1.59	0.44	5.35	0	
Central Europe	0.39	0.12	1.17					
Belarus	0.13	0.03	0.53	2.55	0.62	10.63	1	Region
Estonia	0.13	0.03	0.53	0.34	0.08	1.43	1	Region
Lithuania	0.13	0.03	0.53	0.73	0.18	3.04	1	Region
Latvia	0.13	0.03	0.53	0.48	0.12	2.01	1	Region
Moldova	0.13	0.03	0.53	1.08	0.26	4.49	1	Region
Russia	0.11	0.03	0.39	34.24	9.39	122.59	0	
Ukraine	0.13	0.03	0.53	11.10	2.70	46.34	1	Region
Eastern Europe	0.13	0.03	0.53					
	Central Europe, Eastern Europe, and Central Asia	0.18	0.05	0.66				
Brunei	0.16	0.04	0.60	0.21	0.05	0.80	1	Region
Japan	0.14	0.03	0.62	32.30	7.24	138.73	0	
South Korea	0.15	0.04	0.56	14.45	3.65	54.68	0	
Singapore	0.16	0.04	0.60	1.92	0.45	7.19	1	Region
High-income Asia Pacific	0.16	0.04	0.60					
Australia	0.50	0.15	1.77	30.89	9.27	108.54	0	
New Zealand	0.42	0.12	1.57	6.36	1.83	23.71	1	Region
Australasia	0.42	0.12	1.57					
Austria	0.41	0.20	0.84	6.78	3.31	13.96	1	Region
Belgium	0.41	0.20	0.84	10.49	5.12	21.60	1	Region
Switzerland	0.41	0.20	0.84	6.87	3.35	14.14	1	Region
Cyprus	0.41	0.20	0.84	1.12	0.54	2.30	1	Region

Germany	0.47	0.21	1.04	68.70	31.01	152.98	0	
Denmark	0.48	0.21	1.11	6.20	2.77	14.35	0	
Spain	0.30	0.12	0.71	26.59	10.74	63.57	0	
Finland	0.41	0.20	0.84	4.89	2.38	10.06	1	Region
France	0.41	0.17	0.92	67.82	28.40	152.50	0	
United Kingdom	0.41	0.18	0.92	62.81	27.60	142.03	0	
Greece	0.41	0.20	0.84	8.70	4.24	17.90	1	Region
Ireland	0.41	0.20	0.84	5.35	2.61	11.01	1	Region
Iceland	0.41	0.20	0.84	0.36	0.17	0.74	1	Region
Israel	0.48	0.19	1.29	14.33	5.67	38.33	0	
Italy	0.42	0.19	0.94	45.82	20.33	102.04	0	
Luxembourg	0.41	0.20	0.84	0.53	0.26	1.09	1	Region
Malta	0.41	0.20	0.84	0.35	0.17	0.71	1	Region
Netherlands	0.38	0.15	0.95	14.82	5.85	36.69	0	
Norway	0.50	0.22	1.18	6.32	2.81	14.99	0	
Portugal	0.33	0.11	0.88	6.44	2.18	17.14	0	
Sweden	0.44	0.19	1.07	9.94	4.24	23.89	0	
Western Europe	0.41	0.20	0.84					
Argentina	0.23	0.07	0.72	33.75	9.86	103.84	1	Super-region
Chile	0.23	0.07	0.72	11.57	3.38	35.60	1	Super-region
Uruguay	0.23	0.07	0.72	2.29	0.67	7.04	1	Super-region
High-income Southern Latin America	0.23	0.07	0.72					
Canada	0.36	0.12	1.03	28.39	9.82	81.31	0	
United States	0.30	0.13	0.73	248.16	103.28	599.36	0	
High-income North America	0.32	0.12	0.88					
High-income								
Antigua and Barbuda	0.15	0.03	0.65	0.05	0.01	0.22	1	Super-region
Bahamas, The	0.15	0.03	0.65	0.16	0.04	0.71	1	Super-region

Belize	0.15	0.03	0.65	0.23	0.05	1.03	1	Super-region
Barbados	0.15	0.03	0.65	0.10	0.02	0.47	1	Super-region
Cuba	0.15	0.03	0.65	3.65	0.82	16.41	1	Super-region
Dominican Republic	0.15	0.03	0.65	6.02	1.35	27.04	1	Super-region
Grenada	0.15	0.03	0.65	0.06	0.01	0.25	1	Super-region
Guyana	0.15	0.03	0.65	0.45	0.10	2.01	1	Super-region
Haiti	0.15	0.03	0.65	6.90	1.55	31.01	1	Super-region
Jamaica	0.15	0.03	0.65	1.33	0.30	5.99	1	Super-region
St. Lucia	0.15	0.03	0.65	0.07	0.02	0.32	1	Super-region
Puerto Rico	0.15	0.03	0.65	1.34	0.30	6.02	1	Super-region
Suriname	0.15	0.03	0.65	0.29	0.06	1.29	1	Super-region
Trinidad and Tobago	0.15	0.03	0.65	0.54	0.12	2.41	1	Super-region
St. Vincent and the Grenadines	0.15	0.03	0.65	0.05	0.01	0.23	1	Super-region
Virgin Islands (U.S.)	0.15	0.03	0.65	0.04	0.01	0.18	1	Super-region
Caribbean	0.15	0.03	0.65					
Bolivia	0.15	0.03	0.65	6.69	1.50	30.04	1	Super-region
Ecuador	0.15	0.03	0.65	9.06	2.04	40.69	1	Super-region
Peru	0.15	0.03	0.65	16.85	3.79	75.70	1	Super-region
Andean Latin America	0.15	0.03	0.65					
Colombia	0.15	0.03	0.65	22.65	5.10	101.73	1	Super-region
Costa Rica	0.15	0.03	0.65	2.10	0.47	9.44	1	Super-region
Guatemala	0.15	0.03	0.65	11.37	2.56	51.07	1	Super-region
Honduras	0.15	0.03	0.65	5.71	1.29	25.66	1	Super-region
Mexico	0.15	0.03	0.65	67.21	15.12	301.86	1	Super-region
Nicaragua	0.15	0.03	0.65	3.49	0.79	15.69	1	Super-region
Panama	0.15	0.03	0.65	2.14	0.48	9.61	1	Super-region
El Salvador	0.15	0.03	0.65	3.47	0.78	15.60	1	Super-region
Venezuela, RB	0.15	0.03	0.65	16.92	3.81	76.00	1	Super-region
Central Latin America	0.15	0.03	0.65					
Brazil	0.17	0.04	0.65	107.19	27.87	404.75	0	
Paraguay	0.16	0.04	0.69	4.39	1.02	18.33	1	Region

Tropical Latin America	0.16	0.04	0.69						
Latin America and Caribbean	0.15	0.03	0.65						
Afghanistan	0.12	0.05	0.30	23.76	9.92	58.35	1	Region	
United Arab Emirates	0.12	0.05	0.30	2.07	0.86	5.08	1	Region	
Bahrain	0.12	0.05	0.30	0.45	0.19	1.11	1	Region	
Algeria	0.12	0.04	0.34	17.46	5.82	51.48	0		
Egypt	0.11	0.04	0.27	44.25	18.35	111.06	0		
Iran	0.12	0.05	0.30	29.72	12.41	72.99	1	Region	
Iraq	0.13	0.04	0.36	24.48	8.66	69.48	0		
Jordan	0.12	0.05	0.30	5.35	2.23	13.14	1	Region	
Kuwait	0.12	0.05	0.30	1.35	0.56	3.31	1	Region	
Lebanon	0.12	0.05	0.30	2.36	0.99	5.81	1	Region	
Libya	0.12	0.05	0.30	2.83	1.18	6.95	1	Region	
Morocco	0.10	0.03	0.30	12.41	3.89	37.75	0		
Oman	0.12	0.05	0.30	1.54	0.64	3.79	1	Region	
Palestine	0.12	0.05	0.30	3.01	1.26	7.40	1	Region	
Qatar	0.12	0.05	0.30	0.59	0.25	1.45	1	Region	
Saudi Arabia	0.15	0.05	0.51	16.35	5.56	54.58	0		
Sudan	0.12	0.05	0.30	25.48	10.64	62.58	1	Region	
Syria	0.12	0.05	0.30	10.75	4.49	26.41	1	Region	
Tunisia	0.12	0.04	0.35	4.28	1.51	12.45	0		
Turkey	0.13	0.05	0.34	35.18	13.70	92.74	0		
Yemen, Rep.	0.12	0.05	0.30	17.43	7.27	42.79	1	Region	
North Africa and Middle East	0.12	0.05	0.30						
North Africa and Middle East	0.13	0.03	0.44						

Bangladesh	0.08	0.02	0.28	47.67	12.76	175.90	1	Region
Bhutan	0.08	0.02	0.28	0.22	0.06	0.81	1	Region
India	0.07	0.02	0.26	356.49	101.49	1268.12	0	
Nepal	0.07	0.02	0.29	9.13	2.32	36.49	0	
Pakistan	0.08	0.02	0.28	66.52	17.80	245.43	1	Region
South Asia	0.08	0.02	0.28					
South Asia	0.10	0.02	0.39					
China	0.04	0.02	0.13	146.27	53.31	417.13	0	
North Korea	0.03	0.01	0.09	2.12	0.71	6.52	1	Region
Taiwan (Province of China)	0.01	0.00	0.05	0.66	0.21	2.14	0	
East Asia	0.03	0.01	0.09					
Indonesia	0.08	0.02	0.49	76.82	14.95	468.30	1	Region
Cambodia	0.08	0.02	0.49	5.26	1.02	32.05	1	Region
Laos	0.08	0.02	0.49	2.39	0.47	14.57	1	Region
Sri Lanka	0.09	0.02	0.49	5.65	1.06	32.74	0	
Maldives	0.08	0.02	0.49	0.11	0.02	0.64	1	Region
Myanmar	0.08	0.02	0.49	15.61	3.04	95.14	1	Region
Mauritius	0.08	0.02	0.49	0.26	0.05	1.61	1	Region
Malaysia	0.08	0.02	0.49	8.47	1.65	51.61	1	Region
Philippines	0.08	0.02	0.49	35.16	6.84	214.34	1	Region
Seychelles	0.08	0.02	0.49	0.02	0.00	0.13	1	Region
Thailand	0.08	0.02	0.49	13.42	2.61	81.84	1	Region
Timor-Leste	0.08	0.02	0.49	0.58	0.11	3.55	1	Region
Vietnam	0.08	0.02	0.49	23.13	4.50	141.02	1	Region
Southeast Asia	0.08	0.02	0.49					
Fiji	0.07	0.02	0.31	0.24	0.05	1.04	1	Super-region
Micronesia, Fed. Sts.	0.07	0.02	0.31	0.03	0.01	0.15	1	Super-region
Guam	0.07	0.02	0.31	0.04	0.01	0.17	1	Super-region
Kiribati	0.07	0.02	0.31	0.04	0.01	0.17	1	Super-region
Marshall Islands	0.07	0.02	0.31	0.15	0.03	0.65	1	Super-region
Papua New Guinea	0.07	0.02	0.31	2.78	0.58	11.95	1	Super-region

Solomon Islands	0.07	0.02	0.31	0.22	0.05	0.95	1	Super-region
Tonga	0.07	0.02	0.31	0.04	0.01	0.16	1	Super-region
Vanuatu	0.07	0.02	0.31	0.09	0.02	0.40	1	Super-region
Samoa	0.07	0.02	0.31	0.07	0.01	0.29	1	Super-region
Oceania	0.07	0.02	0.31					
	Southeast Asia, East Asia, and Oceania	0.07	0.02	0.31				
Angola	0.09	0.01	0.40	14.87	1.91	69.07	1	Super-region
Central African Republic	0.09	0.01	0.40	2.22	0.28	10.31	1	Super-region
Congo, Dem. Rep.	0.09	0.01	0.40	40.12	5.15	186.34	1	Super-region
Congo, Rep.	0.09	0.01	0.40	2.39	0.31	11.12	1	Super-region
Gabon	0.09	0.01	0.40	0.80	0.10	3.70	1	Super-region
Equatorial Guinea	0.09	0.01	0.40	0.51	0.07	2.37	1	Super-region
Central sub-Saharan Africa	0.09	0.01	0.40					
Burundi	0.05	0.01	0.31	3.22	0.49	18.35	1	Super-region
Comoros	0.05	0.01	0.31	0.22	0.03	1.25	1	Super-region
Djibouti	0.05	0.01	0.31	0.21	0.03	1.22	1	Super-region
Eritrea	0.05	0.01	0.31	1.42	0.22	8.11	1	Super-region
Ethiopia	0.05	0.01	0.31	29.63	4.49	168.63	1	Super-region
Kenya	0.05	0.01	0.31	13.80	2.09	78.56	1	Super-region
Madagascar	0.05	0.01	0.31	7.19	1.09	40.91	1	Super-region
Mozambique	0.05	0.01	0.31	8.93	1.35	50.79	1	Super-region
Malawi	0.05	0.01	0.31	5.55	0.84	31.59	1	Super-region
Rwanda	0.05	0.01	0.31	3.34	0.51	18.99	1	Super-region
Somalia	0.05	0.01	0.31	4.57	0.69	26.01	1	Super-region
South Sudan	0.05	0.01	0.31	3.57	0.54	20.31	1	Super-region
Tanzania	0.02	0.00	0.13	7.94	1.30	42.05	0	

Uganda	0.05	0.01	0.31	13.64	2.07	77.65	1	Super-region
Zambia	0.05	0.01	0.31	5.18	0.78	29.47	1	Super-region
Eastern sub-Saharan Africa	0.05	0.01	0.31					
Botswana	0.09	0.01	0.40	0.81	0.10	3.78	1	Super-region
Lesotho	0.09	0.01	0.40	0.90	0.12	4.20	1	Super-region
Namibia	0.09	0.01	0.40	1.04	0.13	4.85	1	Super-region
Swaziland	0.09	0.01	0.40	0.57	0.07	2.66	1	Super-region
South Africa	0.09	0.01	0.40	18.79	2.41	87.29	1	Super-region
Zimbabwe	0.09	0.01	0.40	7.44	0.95	34.56	1	Super-region
Southern sub-Saharan Africa	0.09	0.01	0.40					
Benin	0.09	0.01	0.40	5.19	0.67	24.11	1	Super-region
Burkina Faso	0.09	0.01	0.40	9.37	1.20	43.54	1	Super-region
Côte d'Ivoire	0.09	0.01	0.40	11.29	1.45	52.43	1	Super-region
Cameroon	0.09	0.01	0.40	11.15	1.43	51.80	1	Super-region
Cape Verde	0.09	0.01	0.40	0.19	0.02	0.90	1	Super-region
Ghana	0.09	0.01	0.40	12.25	1.57	56.88	1	Super-region
Guinea	0.09	0.01	0.40	5.86	0.75	27.23	1	Super-region
Gambia, The	0.09	0.01	0.40	1.03	0.13	4.78	1	Super-region
Guinea-Bissau	0.09	0.01	0.40	0.84	0.11	3.90	1	Super-region
Liberia	0.09	0.01	0.40	2.17	0.28	10.06	1	Super-region
Mali	0.09	0.01	0.40	9.43	1.21	43.81	1	Super-region
Mauritania	0.09	0.01	0.40	1.93	0.25	8.97	1	Super-region
Niger	0.09	0.01	0.40	11.37	1.46	52.81	1	Super-region
Nigeria	0.09	0.01	0.40	90.41	11.60	419.94	1	Super-region
Senegal	0.09	0.01	0.40	7.35	0.94	34.15	1	Super-region
Sierra Leone	0.09	0.01	0.40	3.49	0.45	16.22	1	Super-region
São Tomé and Príncipe	0.09	0.01	0.40	0.10	0.01	0.44	1	Super-region
Chad	0.09	0.01	0.40	7.57	0.97	35.16	1	Super-region
Togo	0.09	0.01	0.40	3.53	0.45	16.39	1	Super-region

Western sub-Saharan Africa	0.09	0.01	0.40			
Sub-Saharan Africa	0.09	0.01	0.40			
World	0.12	0.04	0.37	3187.63	961.64	9511.03

Notes: Country with missing data: 0 corresponds to a country with data; 1 corresponds to a country with no existing prevalence data.

eTable 10 Crude lifetime prevalence (self-reported diagnosis) of psoriasis in the adult population and number of people with psoriasis (in thousands) with 95% Uncertainty Intervals (UI), by country, region and super-region in the year 2017.

Country	Region	Super-region	Prevalence	95% Lower UI	95% Upper UI	Number of people with psoriasis	Number of people with psoriasis - 95% Lower UI	Number of people with psoriasis - 95% Upper UI	Country with missing data	Estimate "borrowed" from
Armenia			1.62	0.50	5.14	35.29	10.95	111.82	1	Super-region
Azerbaijan			1.62	0.50	5.14	111.43	34.57	353.09	1	Super-region
Georgia			1.62	0.50	5.14	47.76	14.82	151.34	1	Super-region
Kazakhstan			1.62	0.50	5.14	195.49	60.65	619.43	1	Super-region
Kyrgyzstan			1.62	0.50	5.14	59.05	18.32	187.10	1	Super-region
Mongolia			1.62	0.50	5.14	31.54	9.79	99.95	1	Super-region
Tajikistan			1.62	0.50	5.14	80.02	24.83	253.55	1	Super-region
Turkmenistan			1.62	0.50	5.14	57.09	17.71	180.89	1	Super-region
Uzbekistan			1.62	0.50	5.14	329.83	102.34	1045.13	1	Super-region
Central Asia			1.62	0.50	5.14					
Albania			3.47	1.27	9.26	75.93	27.70	202.60	1	Region
Bulgaria			3.47	1.27	9.26	200.56	73.17	535.10	1	Region
Bosnia and Herzegovina			3.47	1.27	9.26	97.10	35.43	259.08	1	Region
Czech Republic			3.47	1.27	9.26	296.30	108.11	790.57	1	Region
Croatia			3.25	1.00	9.86	108.90	33.64	330.10	0	
Hungary			3.47	1.27	9.26	271.94	99.22	725.57	1	Region
Macedonia, FYR			3.47	1.27	9.26	55.80	20.36	148.89	1	Region
Montenegro			3.47	1.27	9.26	16.48	6.01	43.98	1	Region
Poland			3.90	1.23	11.77	1194.72	376.94	3606.70	0	
Romania			4.24	1.47	11.89	662.32	229.31	1856.51	0	
Serbia			3.47	1.27	9.26	236.47	86.28	630.94	1	Region
Slovakia			3.47	1.27	9.26	150.55	54.93	401.67	1	Region

Slovenia	3.53	1.11	10.58	59.14	18.57	177.41	0	
Central Europe	3.47	1.27	9.26					
Belarus	1.13	0.30	4.11	83.82	22.33	305.62	1	Region
Estonia	1.13	0.30	4.11	11.69	3.11	42.62	1	Region
Lithuania	1.13	0.30	4.11	26.00	6.93	94.80	1	Region
Latvia	1.13	0.30	4.11	17.66	4.70	64.38	1	Region
Moldova	1.13	0.30	4.11	35.99	9.59	131.21	1	Region
Russia	0.97	0.31	3.09	1086.51	346.73	3469.88	0	
Ukraine	1.13	0.30	4.11	398.60	106.18	1453.29	1	Region
Eastern Europe	1.13	0.30	4.11					
Central Europe, Eastern Europe, and Central Asia	1.62	0.50	5.14					
Brunei	1.43	0.39	4.34	4.24	1.15	12.84	1	Region
Japan	1.30	0.34	4.59	1362.76	353.48	4824.73	0	
South Korea	1.32	0.40	4.07	544.96	164.75	1676.06	0	
Singapore	1.43	0.39	4.34	64.52	17.57	195.61	1	Region
High-income Asia Pacific	1.43	0.39	4.34					
Australia	4.51	1.65	12.62	826.44	302.62	2312.83	0	
New Zealand	3.77	1.32	12.27	146.50	51.41	476.14	1	Region
Australasia	3.77	1.32	12.27					
Austria	3.63	2.36	5.43	256.88	166.72	384.06	1	Region
Belgium	3.63	2.36	5.43	321.51	208.67	480.69	1	Region
Switzerland	3.63	2.36	5.43	246.60	160.04	368.68	1	Region
Cyprus	3.63	2.36	5.43	32.90	21.35	49.18	1	Region
Germany	4.17	2.32	7.43	2807.95	1564.02	5001.74	0	
Denmark	4.28	2.46	7.67	189.99	109.27	340.37	0	
Spain	2.66	1.33	4.86	993.27	498.49	1818.99	0	
Finland	3.63	2.36	5.43	157.03	101.91	234.77	1	Region
France	3.67	2.04	6.56	1882.34	1047.06	3363.64	0	

United Kingdom	3.64	2.08	6.23	1853.34	1056.80	3173.01	0	
Greece	3.63	2.36	5.43	327.77	212.72	490.04	1	Region
Ireland	3.63	2.36	5.43	125.26	81.30	187.28	1	Region
Iceland	3.63	2.36	5.43	8.91	5.78	13.31	1	Region
Israel	4.33	2.04	9.91	231.80	109.45	530.89	0	
Italy	3.79	2.15	6.90	1839.04	1045.52	3349.93	0	
Luxembourg	3.63	2.36	5.43	16.47	10.69	24.62	1	Region
Malta	3.63	2.36	5.43	12.58	8.16	18.80	1	Region
Netherlands	3.42	1.71	6.49	459.60	229.78	871.69	0	
Norway	4.46	2.53	8.37	180.05	102.02	337.75	0	
Portugal	2.96	1.24	6.21	247.59	104.10	520.68	0	
Sweden	3.97	2.13	7.53	304.82	163.17	578.07	0	
Western Europe	3.63	2.36	5.43					
Argentina	2.08	0.71	5.17	620.30	211.74	1538.25	1	Super-region
Chile	2.08	0.71	5.17	272.61	93.06	676.04	1	Super-region
Uruguay	2.08	0.71	5.17	51.61	17.62	127.99	1	Super-region
High-income Southern Latin America	2.08	0.71	5.17					
Canada	3.21	1.45	7.04	923.01	415.70	2021.85	0	
United States	2.69	1.37	5.34	6507.78	3316.45	12909.60	0	
High-income North America	2.83	1.31	6.06					
High-income	2.08	0.71	5.17					
Antigua and Barbuda	1.30	0.32	5.03	0.87	0.21	3.37	1	Super-region
Bahamas, The	1.30	0.32	5.03	3.72	0.91	14.40	1	Super-region
Belize	1.30	0.32	5.03	2.83	0.69	10.92	1	Super-region
Barbados	1.30	0.32	5.03	2.79	0.68	10.77	1	Super-region
Cuba	1.30	0.32	5.03	116.86	28.40	451.74	1	Super-region
Dominican Republic	1.30	0.32	5.03	86.32	20.98	333.68	1	Super-region
Grenada	1.30	0.32	5.03	0.92	0.22	3.57	1	Super-region
Guyana	1.30	0.32	5.03	6.11	1.48	23.61	1	Super-region

Haiti	1.30	0.32	5.03	81.20	19.74	313.89	1	Super-region
Jamaica	1.30	0.32	5.03	25.71	6.25	99.38	1	Super-region
St. Lucia	1.30	0.32	5.03	1.71	0.41	6.60	1	Super-region
Puerto Rico	1.30	0.32	5.03	35.74	8.69	138.14	1	Super-region
Suriname	1.30	0.32	5.03	4.73	1.15	18.27	1	Super-region
Trinidad and Tobago	1.30	0.32	5.03	13.02	3.17	50.34	1	Super-region
St. Vincent and the Grenadines	1.30	0.32	5.03	0.95	0.23	3.68	1	Super-region
Virgin Islands (U.S.)	1.30	0.32	5.03	1.00	0.24	3.88	1	Super-region
Caribbean	1.30	0.32	5.03					
Bolivia	1.30	0.32	5.03	84.07	20.43	324.97	1	Super-region
Ecuador	1.30	0.32	5.03	135.41	32.91	523.43	1	Super-region
Peru	1.30	0.32	5.03	268.08	65.15	1036.28	1	Super-region
Andean Latin America	1.30	0.32	5.03					
Colombia	1.30	0.32	5.03	436.26	106.03	1686.37	1	Super-region
Costa Rica	1.30	0.32	5.03	45.09	10.96	174.29	1	Super-region
Guatemala	1.30	0.32	5.03	118.53	28.81	458.18	1	Super-region
Honduras	1.30	0.32	5.03	69.53	16.90	268.79	1	Super-region
Mexico	1.30	0.32	5.03	1080.61	262.63	4177.14	1	Super-region
Nicaragua	1.30	0.32	5.03	49.72	12.09	192.21	1	Super-region
Panama	1.30	0.32	5.03	34.24	8.32	132.35	1	Super-region
El Salvador	1.30	0.32	5.03	51.98	12.63	200.92	1	Super-region
Venezuela, RB	1.30	0.32	5.03	265.00	64.40	1024.35	1	Super-region
Central Latin America	1.30	0.32	5.03					
Brazil	1.53	0.44	5.29	2248.35	641.80	7766.38	0	
Paraguay	1.47	0.37	5.68	60.76	15.36	234.82	1	Region
Tropical Latin America	1.47	0.37	5.68					
Latin America and Caribbean	1.30	0.32	5.03					
Afghanistan	1.09	0.51	2.30	173.31	80.99	367.32	1	Region

United Arab Emirates	1.09	0.51	2.30	83.59	39.06	177.17	1	Region
Bahrain	1.09	0.51	2.30	12.15	5.68	25.74	1	Region
Algeria	1.04	0.39	2.78	275.01	102.66	732.26	0	
Egypt	0.97	0.42	2.24	546.84	235.23	1270.15	0	
Iran	1.09	0.51	2.30	615.78	287.75	1305.10	1	Region
Iraq	1.13	0.45	2.91	212.57	85.54	549.25	0	
Jordan	1.09	0.51	2.30	57.53	26.88	121.93	1	Region
Kuwait	1.09	0.51	2.30	32.83	15.34	69.59	1	Region
Lebanon	1.09	0.51	2.30	44.89	20.98	95.15	1	Region
Libya	1.09	0.51	2.30	43.91	20.52	93.07	1	Region
Morocco	0.87	0.30	2.30	200.97	70.00	530.25	0	
Oman	1.09	0.51	2.30	36.58	17.09	77.53	1	Region
Palestine	1.09	0.51	2.30	26.47	12.37	56.09	1	Region
Qatar	1.09	0.51	2.30	23.40	10.94	49.60	1	Region
Saudi Arabia	1.38	0.51	4.47	308.26	114.60	998.22	0	
Sudan	1.09	0.51	2.30	212.26	99.19	449.87	1	Region
Syria	1.09	0.51	2.30	102.22	47.77	216.66	1	Region
Tunisia	1.07	0.44	2.74	85.48	34.87	218.00	0	
Turkey	1.17	0.53	2.61	629.59	284.35	1403.41	0	
Yemen, Rep.	1.09	0.51	2.30	150.95	70.54	319.93	1	Region
North Africa and Middle East	1.09	0.51	2.30					
North Africa and Middle East	1.15	0.34	3.45					
Bangladesh	0.68	0.20	2.29	690.13	203.05	2333.10	1	Region
Bhutan	0.68	0.20	2.29	3.50	1.03	11.83	1	Region
India	0.64	0.20	2.14	5411.61	1645.55	18037.95	0	
Nepal	0.66	0.19	2.35	111.91	31.35	397.28	0	
Pakistan	0.68	0.20	2.29	740.86	217.98	2504.60	1	Region
South Asia	0.68	0.20	2.29					
South Asia	0.92	0.22	3.19					

China	0.40	0.16	0.95	4339.17	1773.32	10291.09	0	
North Korea	0.26	0.10	0.71	48.45	18.47	129.95	1	Region
Taiwan (Province of China)	0.13	0.04	0.38	24.70	8.55	72.45	0	
East Asia	0.26	0.10	0.71					
Indonesia	0.72	0.16	3.92	1220.71	262.18	6617.41	1	Region
Cambodia	0.72	0.16	3.92	68.65	14.74	372.14	1	Region
Laos	0.72	0.16	3.92	28.18	6.05	152.78	1	Region
Sri Lanka	0.76	0.16	3.97	109.02	22.83	566.60	0	
Maldives	0.72	0.16	3.92	2.20	0.47	11.95	1	Region
Myanmar	0.72	0.16	3.92	246.11	52.86	1334.14	1	Region
Mauritius	0.72	0.16	3.92	6.78	1.46	36.76	1	Region
Malaysia	0.72	0.16	3.92	152.82	32.82	828.45	1	Region
Philippines	0.72	0.16	3.92	443.69	95.30	2405.23	1	Region
Seychelles	0.72	0.16	3.92	0.49	0.11	2.66	1	Region
Thailand	0.72	0.16	3.92	378.89	81.38	2053.93	1	Region
Timor-Leste	0.72	0.16	3.92	4.15	0.89	22.49	1	Region
Vietnam	0.72	0.16	3.92	483.56	103.86	2621.38	1	Region
Southeast Asia	0.72	0.16	3.92					
Fiji	0.65	0.15	2.47	3.71	0.86	14.08	1	Super-region
Micronesia, Fed. Sts.	0.65	0.15	2.47	0.36	0.08	1.38	1	Super-region
Guam	0.65	0.15	2.47	0.71	0.16	2.69	1	Super-region
Kiribati	0.65	0.15	2.47	0.42	0.10	1.61	1	Super-region
Marshall Islands	0.65	0.15	2.47	2.08	0.48	7.88	1	Super-region
Papua New Guinea	0.65	0.15	2.47	28.81	6.70	109.33	1	Super-region
Solomon Islands	0.65	0.15	2.47	2.00	0.46	7.58	1	Super-region
Tonga	0.65	0.15	2.47	0.37	0.09	1.41	1	Super-region
Vanuatu	0.65	0.15	2.47	0.98	0.23	3.70	1	Super-region
Samoa	0.65	0.15	2.47	0.68	0.16	2.59	1	Super-region
Oceania	0.65	0.15	2.47					

Southeast Asia, East Asia, and Oceania	0.65	0.15	2.47						
Angola	0.78	0.11	3.28	99.02	13.59	416.96	1	Super-region	
Central African Republic	0.78	0.11	3.28	16.43	2.26	69.18	1	Super-region	
Congo, Dem. Rep.	0.78	0.11	3.28	274.86	37.73	1157.42	1	Super-region	
Congo, Rep.	0.78	0.11	3.28	19.57	2.69	82.41	1	Super-region	
Gabon	0.78	0.11	3.28	8.67	1.19	36.53	1	Super-region	
Equatorial Guinea	0.78	0.11	3.28	5.30	0.73	22.32	1	Super-region	
Central sub-Saharan Africa	0.78	0.11	3.28						
Burundi	0.48	0.08	2.59	23.65	3.67	126.56	1	Super-region	
Comoros	0.48	0.08	2.59	1.96	0.30	10.50	1	Super-region	
Djibouti	0.48	0.08	2.59	2.71	0.42	14.48	1	Super-region	
Eritrea	0.48	0.08	2.59	11.75	1.83	62.86	1	Super-region	
Ethiopia	0.48	0.08	2.59	242.01	37.60	1295.03	1	Super-region	
Kenya	0.48	0.08	2.59	116.63	18.12	624.09	1	Super-region	
Madagascar	0.48	0.08	2.59	59.23	9.20	316.93	1	Super-region	
Mozambique	0.48	0.08	2.59	63.48	9.86	339.71	1	Super-region	
Malawi	0.48	0.08	2.59	40.32	6.26	215.74	1	Super-region	
Rwanda	0.48	0.08	2.59	29.14	4.53	155.91	1	Super-region	
Somalia	0.48	0.08	2.59	30.32	4.71	162.27	1	Super-region	
South Sudan	0.48	0.08	2.59	28.83	4.48	154.28	1	Super-region	
Tanzania	0.42	0.08	2.20	107.98	19.37	561.98	0		
Uganda	0.48	0.08	2.59	85.03	13.21	454.99	1	Super-region	
Zambia	0.48	0.08	2.59	36.25	5.63	193.97	1	Super-region	
Eastern sub-Saharan Africa	0.48	0.08	2.59						
Botswana	0.78	0.11	3.28	10.58	1.45	44.57	1	Super-region	
Lesotho	0.78	0.11	3.28	9.32	1.28	39.25	1	Super-region	
Namibia	0.78	0.11	3.28	10.40	1.43	43.78	1	Super-region	
Swaziland	0.78	0.11	3.28	5.53	0.76	23.27	1	Super-region	
South Africa	0.78	0.11	3.28	273.82	37.59	1153.05	1	Super-region	

Zimbabwe	0.78	0.11	3.28	62.23	8.54	262.06	1	Super-region
Southern sub-Saharan Africa	0.78	0.11	3.28					
Benin	0.78	0.11	3.28	40.65	5.58	171.18	1	Super-region
Burkina Faso	0.78	0.11	3.28	65.69	9.02	276.63	1	Super-region
Côte d'Ivoire	0.78	0.11	3.28	88.33	12.12	371.93	1	Super-region
Cameroon	0.78	0.11	3.28	87.64	12.03	369.05	1	Super-region
Cape Verde	0.78	0.11	3.28	2.53	0.35	10.67	1	Super-region
Ghana	0.78	0.11	3.28	115.10	15.80	484.70	1	Super-region
Guinea	0.78	0.11	3.28	46.64	6.40	196.42	1	Super-region
Gambia, The	0.78	0.11	3.28	7.15	0.98	30.13	1	Super-region
Guinea-Bissau	0.78	0.11	3.28	6.98	0.96	29.41	1	Super-region
Liberia	0.78	0.11	3.28	17.49	2.40	73.65	1	Super-region
Mali	0.78	0.11	3.28	60.08	8.25	253.00	1	Super-region
Mauritania	0.78	0.11	3.28	17.18	2.36	72.33	1	Super-region
Niger	0.78	0.11	3.28	65.62	9.01	276.33	1	Super-region
Nigeria	0.78	0.11	3.28	678.51	93.14	2857.16	1	Super-region
Senegal	0.78	0.11	3.28	57.73	7.92	243.09	1	Super-region
Sierra Leone	0.78	0.11	3.28	27.64	3.79	116.38	1	Super-region
São Tomé and Príncipe	0.78	0.11	3.28	0.73	0.10	3.08	1	Super-region
Chad	0.78	0.11	3.28	48.35	6.64	203.61	1	Super-region
Togo	0.78	0.11	3.28	29.19	4.01	122.91	1	Super-region
Western sub-Saharan Africa	0.78	0.11	3.28					
Sub-Saharan Africa	0.78	0.11	3.28					
World	1.12	0.38	2.84	55821.33	19066.58	141987.03		

Notes: Country with missing data: 0 corresponds to a country with data; 1 corresponds to a country with no existing prevalence data.

eTable 11 Crude lifetime prevalence (self-reported diagnosis) of psoriasis in the overall population and number of people with psoriasis (in thousands) with 95% Uncertainty Intervals (UI), by country, region and super-region in the year 2017.

Country	Region	Super-region	Prevalence	95% Lower UI	95% Upper UI	Number of people with psoriasis	Number of people with psoriasis - 95% Lower UI	Number of people with psoriasis - 95% Upper UI	Country with missing data	Estimate "borrowed" from
Armenia			1.28	0.40	4.32	37.64	11.65	126.57	1	Super-region
Azerbaijan			1.28	0.40	4.32	126.13	39.05	424.13	1	Super-region
Georgia			1.28	0.40	4.32	50.23	15.55	168.91	1	Super-region
Kazakhstan			1.28	0.40	4.32	233.63	72.34	785.64	1	Super-region
Kyrgyzstan			1.28	0.40	4.32	77.59	24.02	260.92	1	Super-region
Mongolia			1.28	0.40	4.32	39.46	12.22	132.70	1	Super-region
Tajikistan			1.28	0.40	4.32	114.51	35.46	385.07	1	Super-region
Turkmenistan			1.28	0.40	4.32	73.92	22.89	248.57	1	Super-region
Uzbekistan			1.28	0.40	4.32	409.56	126.81	1377.26	1	Super-region
Central Asia			1.28	0.40	4.32					
Albania			2.75	0.93	7.93	80.44	27.18	232.20	1	Region
Bulgaria			2.75	0.93	7.93	194.54	65.73	561.60	1	Region
Bosnia and Herzegovina			2.75	0.93	7.93	96.23	32.51	277.79	1	Region
Czech Republic			2.75	0.93	7.93	291.57	98.52	841.68	1	Region
Croatia			2.57	0.73	8.74	107.85	30.41	366.21	0	
Hungary			2.75	0.93	7.93	266.93	90.19	770.57	1	Region
Macedonia, FYR			2.75	0.93	7.93	57.15	19.31	164.97	1	Region
Montenegro			2.75	0.93	7.93	17.27	5.84	49.87	1	Region
Poland			3.09	0.93	10.18	1177.95	354.11	3886.79	0	

Romania	3.36	1.11	10.06	660.56	219.22	1979.75	0	
Serbia	2.75	0.93	7.93	241.39	81.56	696.84	1	Region
Slovakia	2.75	0.93	7.93	149.59	50.54	431.82	1	Region
Slovenia	2.79	0.85	9.02	58.05	17.63	187.69	0	
Central Europe	2.75	0.93	7.93					
Belarus	0.89	0.24	3.39	84.36	22.37	321.27	1	Region
Estonia	0.89	0.24	3.39	11.68	3.10	44.49	1	Region
Lithuania	0.89	0.24	3.39	25.73	6.82	98.01	1	Region
Latvia	0.89	0.24	3.39	17.38	4.61	66.21	1	Region
Moldova	0.89	0.24	3.39	36.10	9.57	137.47	1	Region
Russia	0.77	0.24	2.42	1102.32	348.17	3486.14	0	
Ukraine	0.89	0.24	3.39	394.03	104.49	1500.65	1	Region
Eastern Europe	0.89	0.24	3.39					
Central Europe, Eastern Europe, and Central Asia	1.28	0.40	4.32					
Brunei	1.13	0.30	3.71	4.87	1.31	15.97	1	Region
Japan	1.03	0.27	3.85	1307.15	340.93	4906.14	0	
South Korea	1.05	0.30	3.52	533.61	152.93	1792.24	0	
Singapore	1.13	0.30	3.71	64.65	17.34	212.00	1	Region
High-income Asia Pacific	1.13	0.30	3.71					
Australia	3.57	1.14	11.55	872.76	279.62	2823.32	0	
New Zealand	2.99	0.94	10.66	161.01	50.80	574.53	1	Region
Australasia	2.99	0.94	10.66					
Austria	2.88	1.55	5.13	251.31	135.62	448.08	1	Region
Belgium	2.88	1.55	5.13	328.75	177.41	586.14	1	Region
Switzerland	2.88	1.55	5.13	243.81	131.57	434.69	1	Region
Cyprus	2.88	1.55	5.13	33.94	18.32	60.52	1	Region
Germany	3.30	1.63	6.60	2708.59	1341.78	5418.68	0	

Denmark	3.39	1.68	6.87	194.24	96.16	393.87	0	
Spain	2.10	0.97	4.41	974.31	447.55	2042.86	0	
Finland	2.88	1.55	5.13	158.87	85.73	283.25	1	Region
France	2.91	1.37	5.78	1969.88	929.20	3914.88	0	
United Kingdom	2.88	1.45	5.69	1911.45	962.52	3775.71	0	
Greece	2.88	1.55	5.13	320.95	173.20	572.24	1	Region
Ireland	2.88	1.55	5.13	137.00	73.94	244.27	1	Region
Iceland	2.88	1.55	5.13	9.58	5.17	17.08	1	Region
Israel	3.42	1.52	7.96	284.90	126.52	662.40	0	
Italy	3.00	1.48	6.17	1779.77	879.24	3664.65	0	
Luxembourg	2.88	1.55	5.13	16.80	9.07	29.95	1	Region
Malta	2.88	1.55	5.13	12.40	6.69	22.10	1	Region
Netherlands	2.71	1.20	5.87	468.68	207.93	1014.84	0	
Norway	3.53	1.80	7.18	187.26	95.59	380.71	0	
Portugal	2.34	0.86	5.50	241.53	88.95	567.80	0	
Sweden	3.14	1.50	6.58	311.61	149.12	652.44	0	
Western Europe	2.88	1.55	5.13					
Argentina	1.65	0.52	4.45	729.92	231.82	1970.00	1	Super-region
Chile	1.65	0.52	4.45	297.68	94.54	803.42	1	Super-region
Uruguay	1.65	0.52	4.45	57.05	18.12	153.97	1	Super-region
High-income Southern Latin America	1.65	0.52	4.45					
Canada	2.54	0.96	6.50	931.47	350.53	2381.57	0	
United States	2.13	0.95	4.89	6907.37	3095.82	15877.37	0	
High-income North America	2.24	0.90	5.48					
High-income	1.65	0.52	4.45					
Antigua and Barbuda	1.03	0.25	4.33	1.03	0.25	4.33	1	Super-region
Bahamas, The	1.03	0.25	4.33	4.06	1.00	17.05	1	Super-region
Belize	1.03	0.25	4.33	3.85	0.95	16.18	1	Super-region
Barbados	1.03	0.25	4.33	2.95	0.73	12.37	1	Super-region

Cuba	1.03	0.25	4.33	118.35	29.28	496.90	1	Super-region
Dominican Republic	1.03	0.25	4.33	110.95	27.45	465.83	1	Super-region
Grenada	1.03	0.25	4.33	1.12	0.28	4.72	1	Super-region
Guyana	1.03	0.25	4.33	8.01	1.98	33.62	1	Super-region
Haiti	1.03	0.25	4.33	113.16	28.00	475.09	1	Super-region
Jamaica	1.03	0.25	4.33	29.78	7.37	125.05	1	Super-region
St. Lucia	1.03	0.25	4.33	1.86	0.46	7.79	1	Super-region
Puerto Rico	1.03	0.25	4.33	37.77	9.34	158.58	1	Super-region
Suriname	1.03	0.25	4.33	5.78	1.43	24.27	1	Super-region
Trinidad and Tobago	1.03	0.25	4.33	14.11	3.49	59.24	1	Super-region
St. Vincent and the Grenadines	1.03	0.25	4.33	1.11	0.28	4.67	1	Super-region
Virgin Islands (U.S.)	1.03	0.25	4.33	1.08	0.27	4.54	1	Super-region
Caribbean	1.03	0.25	4.33					
Bolivia	1.03	0.25	4.33	113.89	28.18	478.17	1	Super-region
Ecuador	1.03	0.25	4.33	171.33	42.39	719.31	1	Super-region
Peru	1.03	0.25	4.33	331.51	82.01	1391.84	1	Super-region
Andean Latin America	1.03	0.25	4.33					
Colombia	1.03	0.25	4.33	505.66	125.10	2122.95	1	Super-region
Costa Rica	1.03	0.25	4.33	50.56	12.51	212.28	1	Super-region
Guatemala	1.03	0.25	4.33	174.33	43.13	731.90	1	Super-region
Honduras	1.03	0.25	4.33	95.49	23.62	400.89	1	Super-region
Mexico	1.03	0.25	4.33	1331.14	329.32	5588.68	1	Super-region
Nicaragua	1.03	0.25	4.33	64.09	15.86	269.09	1	Super-region
Panama	1.03	0.25	4.33	42.25	10.45	177.40	1	Super-region
El Salvador	1.03	0.25	4.33	65.73	16.26	275.97	1	Super-region
Venezuela, RB	1.03	0.25	4.33	329.55	81.53	1383.57	1	Super-region
Central Latin America	1.03	0.25	4.33					
Brazil	1.21	0.35	4.21	2538.37	726.96	8810.37	0	
Paraguay	1.16	0.29	4.61	79.18	19.90	314.16	1	Region

Tropical Latin America	1.16	0.29	4.61						
Latin America and Caribbean	1.03	0.25	4.33						
Afghanistan	0.86	0.39	1.97	305.45	136.86	699.08	1	Region	
United Arab Emirates	0.86	0.39	1.97	80.81	36.21	184.94	1	Region	
Bahrain	0.86	0.39	1.97	12.82	5.74	29.34	1	Region	
Algeria	0.83	0.29	2.28	341.28	119.12	940.69	0		
Egypt	0.76	0.31	1.88	746.12	305.29	1829.48	0		
Iran	0.86	0.39	1.97	697.81	312.67	1597.07	1	Region	
Iraq	0.89	0.35	2.31	341.58	132.49	884.19	0		
Jordan	0.86	0.39	1.97	83.41	37.37	190.90	1	Region	
Kuwait	0.86	0.39	1.97	35.54	15.93	81.34	1	Region	
Lebanon	0.86	0.39	1.97	52.27	23.42	119.64	1	Region	
Libya	0.86	0.39	1.97	54.79	24.55	125.40	1	Region	
Morocco	0.69	0.22	1.88	246.93	80.31	673.26	0		
Oman	0.86	0.39	1.97	39.87	17.86	91.24	1	Region	
Palestine	0.86	0.39	1.97	42.29	18.95	96.79	1	Region	
Qatar	0.86	0.39	1.97	22.69	10.17	51.93	1	Region	
Saudi Arabia	1.09	0.37	3.58	359.75	123.24	1178.91	0		
Sudan	0.86	0.39	1.97	348.46	156.13	797.52	1	Region	
Syria	0.86	0.39	1.97	157.06	70.37	359.46	1	Region	
Tunisia	0.85	0.33	2.22	97.95	38.12	255.66	0		
Turkey	0.93	0.38	2.21	747.36	310.70	1780.54	0		
Yemen, Rep.	0.86	0.39	1.97	242.87	108.82	555.85	1	Region	
North Africa and Middle East	0.86	0.39	1.97						
North Africa and Middle East	0.91	0.26	2.92						
Bangladesh	0.54	0.16	1.82	883.77	264.05	3002.20	1	Region	
Bhutan	0.54	0.16	1.82	4.32	1.29	14.68	1	Region	
India	0.51	0.15	1.72	6807.19	2018.04	22967.51	0		

Nepal	0.52	0.14	1.99	153.25	42.07	584.30	0	
Pakistan	0.54	0.16	1.82	1057.37	315.92	3591.93	1	Region
South Asia	0.54	0.16	1.82					
South Asia	0.73	0.16	2.66					
China	0.32	0.12	0.79	4469.63	1743.51	11237.93	0	
North Korea	0.21	0.08	0.59	53.38	19.65	150.21	1	Region
Taiwan (Province of China)	0.10	0.03	0.33	24.24	7.98	77.47	0	
East Asia	0.21	0.08	0.59					
Indonesia	0.57	0.12	3.12	1510.06	308.51	8241.19	1	Region
Cambodia	0.57	0.12	3.12	91.56	18.70	499.67	1	Region
Laos	0.57	0.12	3.12	39.23	8.02	214.12	1	Region
Sri Lanka	0.60	0.12	3.16	126.27	25.56	658.95	0	
Maldives	0.57	0.12	3.12	2.49	0.51	13.61	1	Region
Myanmar	0.57	0.12	3.12	305.29	62.37	1666.11	1	Region
Mauritius	0.57	0.12	3.12	7.23	1.48	39.46	1	Region
Malaysia	0.57	0.12	3.12	180.89	36.96	987.22	1	Region
Philippines	0.57	0.12	3.12	600.13	122.61	3275.24	1	Region
Seychelles	0.57	0.12	3.12	0.54	0.11	2.97	1	Region
Thailand	0.57	0.12	3.12	394.90	80.68	2155.19	1	Region
Timor-Leste	0.57	0.12	3.12	7.41	1.51	40.46	1	Region
Vietnam	0.57	0.12	3.12	546.50	111.65	2982.55	1	Region
Southeast Asia	0.57	0.12	3.12					
Fiji	0.52	0.12	2.01	4.66	1.04	18.19	1	Super-region
Micronesia, Fed. Sts.	0.52	0.12	2.01	0.54	0.12	2.09	1	Super-region
Guam	0.52	0.12	2.01	0.84	0.19	3.30	1	Super-region
Kiribati	0.52	0.12	2.01	0.61	0.14	2.37	1	Super-region
Marshall Islands	0.52	0.12	2.01	2.71	0.61	10.58	1	Super-region
Papua New Guinea	0.52	0.12	2.01	42.49	9.49	166.00	1	Super-region
Solomon Islands	0.52	0.12	2.01	3.15	0.70	12.29	1	Super-region

Tonga	0.52	0.12	2.01	0.56	0.12	2.17	1	Super-region
Vanuatu	0.52	0.12	2.01	1.43	0.32	5.57	1	Super-region
Samoa	0.52	0.12	2.01	1.01	0.23	3.96	1	Super-region
Oceania	0.52	0.12	2.01					
Southeast Asia, East Asia, and Oceania	0.52	0.12	2.01					
Angola	0.62	0.08	2.61	183.68	25.27	777.15	1	Super-region
Central African Republic	0.62	0.08	2.61	28.73	3.95	121.55	1	Super-region
Congo, Dem. Rep.	0.62	0.08	2.61	501.64	69.03	2122.45	1	Super-region
Congo, Rep.	0.62	0.08	2.61	32.45	4.46	137.28	1	Super-region
Gabon	0.62	0.08	2.61	12.50	1.72	52.89	1	Super-region
Equatorial Guinea	0.62	0.08	2.61	7.81	1.07	33.03	1	Super-region
Central sub-Saharan Africa	0.62	0.08	2.61					
Burundi	0.38	0.06	2.02	41.55	6.53	219.45	1	Super-region
Comoros	0.38	0.06	2.02	3.11	0.49	16.44	1	Super-region
Djibouti	0.38	0.06	2.02	3.66	0.57	19.31	1	Super-region
Eritrea	0.38	0.06	2.02	19.38	3.05	102.38	1	Super-region
Ethiopia	0.38	0.06	2.02	401.37	63.07	2119.92	1	Super-region
Kenya	0.38	0.06	2.02	190.06	29.87	1003.86	1	Super-region
Madagascar	0.38	0.06	2.02	97.79	15.37	516.48	1	Super-region
Mozambique	0.38	0.06	2.02	113.45	17.83	599.21	1	Super-region
Malawi	0.38	0.06	2.02	71.21	11.19	376.13	1	Super-region
Rwanda	0.38	0.06	2.02	46.68	7.34	246.58	1	Super-region
Somalia	0.38	0.06	2.02	56.37	8.86	297.74	1	Super-region
South Sudan	0.38	0.06	2.02	48.09	7.56	254.01	1	Super-region
Tanzania	0.33	0.06	1.67	191.97	33.19	955.55	0	
Uganda	0.38	0.06	2.02	163.92	25.76	865.77	1	Super-region
Zambia	0.38	0.06	2.02	65.37	10.27	345.24	1	Super-region
Eastern sub-Saharan Africa	0.38	0.06	2.02					

Botswana	0.62	0.08	2.61	14.14	1.95	59.81	1	Super-region
Lesotho	0.62	0.08	2.61	13.78	1.90	58.29	1	Super-region
Namibia	0.62	0.08	2.61	15.62	2.15	66.07	1	Super-region
Swaziland	0.62	0.08	2.61	8.42	1.16	35.64	1	Super-region
South Africa	0.62	0.08	2.61	349.78	48.13	1479.94	1	Super-region
Zimbabwe	0.62	0.08	2.61	101.95	14.03	431.33	1	Super-region
Southern sub-Saharan Africa	0.62	0.08	2.61					
Benin	0.62	0.08	2.61	68.94	9.49	291.68	1	Super-region
Burkina Faso	0.62	0.08	2.61	118.37	16.29	500.85	1	Super-region
Côte d'Ivoire	0.62	0.08	2.61	149.84	20.62	633.98	1	Super-region
Cameroon	0.62	0.08	2.61	148.34	20.41	627.61	1	Super-region
Cape Verde	0.62	0.08	2.61	3.37	0.46	14.27	1	Super-region
Ghana	0.62	0.08	2.61	177.82	24.47	752.34	1	Super-region
Guinea	0.62	0.08	2.61	78.44	10.79	331.86	1	Super-region
Gambia, The	0.62	0.08	2.61	12.95	1.78	54.77	1	Super-region
Guinea-Bissau	0.62	0.08	2.61	11.48	1.58	48.56	1	Super-region
Liberia	0.62	0.08	2.61	29.18	4.01	123.45	1	Super-region
Mali	0.62	0.08	2.61	114.35	15.73	483.81	1	Super-region
Mauritania	0.62	0.08	2.61	27.27	3.75	115.36	1	Super-region
Niger	0.62	0.08	2.61	132.45	18.23	560.42	1	Super-region
Nigeria	0.62	0.08	2.61	1177.25	161.99	4980.98	1	Super-region
Senegal	0.62	0.08	2.61	97.75	13.45	413.59	1	Super-region
Sierra Leone	0.62	0.08	2.61	46.61	6.41	197.19	1	Super-region
São Tomé and Príncipe	0.62	0.08	2.61	1.26	0.17	5.32	1	Super-region
Chad	0.62	0.08	2.61	91.88	12.64	388.75	1	Super-region
Togo	0.62	0.08	2.61	48.09	6.62	203.45	1	Super-region
Western sub-Saharan Africa	0.62	0.08	2.61					
Sub-Saharan Africa	0.62	0.08	2.61					

World

0.88

0.29

2.54

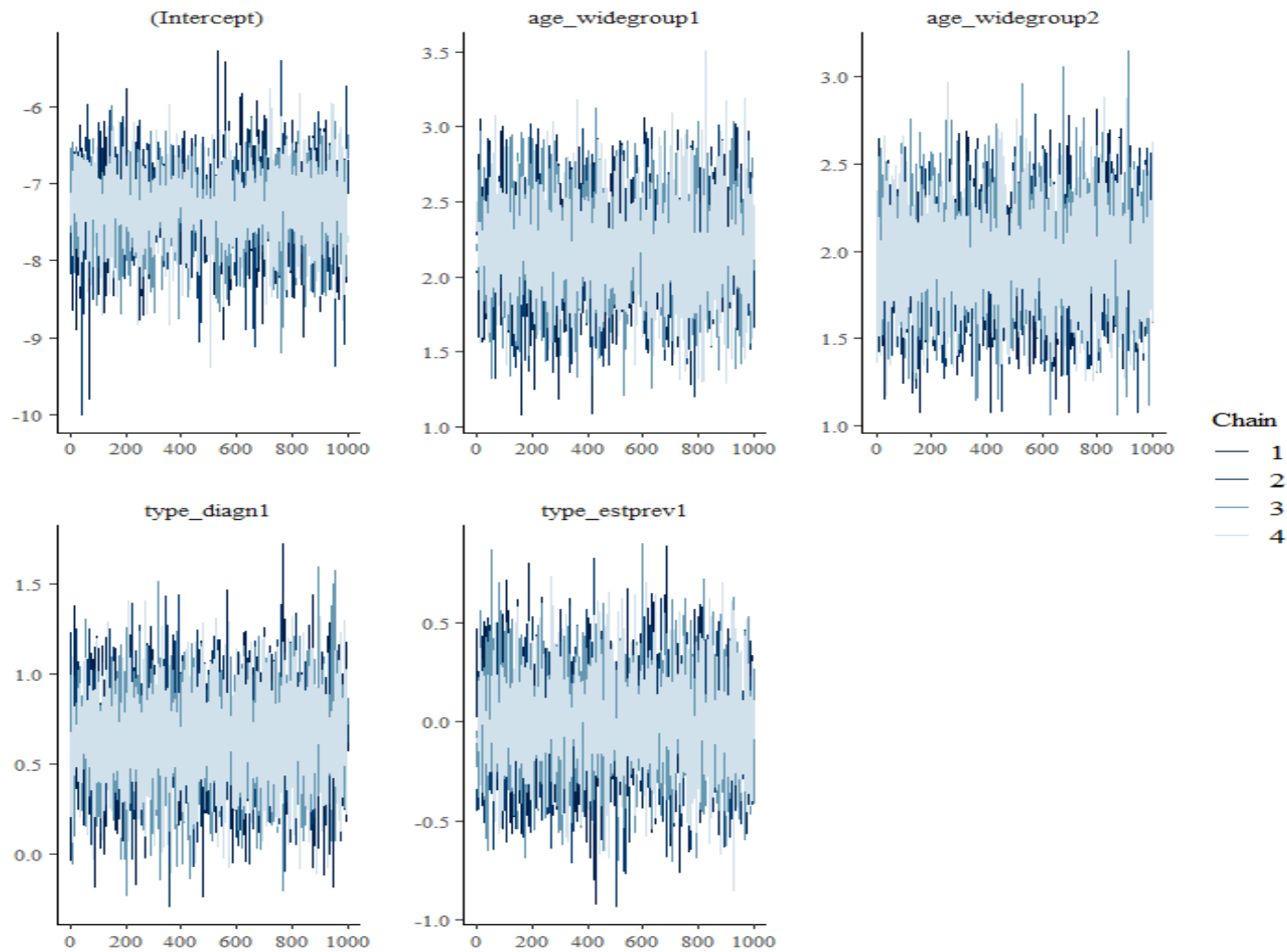
66436.25

21681.93

191721.50

Notes: Country with missing data: 0 corresponds to a country with data; 1 corresponds to a country with no existing prevalence data.

eFigure 2. Trace plots for covariates in the Bayesian multilevel model showing 1000 posterior draws total across 4 parallel chains



Note: age_widegroup1 is the category of age strata for adults; age_widegroup2 is the category for age strata for the overall population; type_diagn1 is the variable type of diagnostic method (where 1 is the self-reported diagnosis); type_estprev21 is the variable type of prevalence measure (where 1 is the lifetime prevalence of psoriasis).