

Supplementary Materials

Materials and Methods

The endotoxin level of each protein sample was measured by the toxinsensor™ chromogenic limulus amoebocyte lysate (LAL) endotoxin assay kit according to the manufacturer's instructions (GenScript, New Jersey, USA).

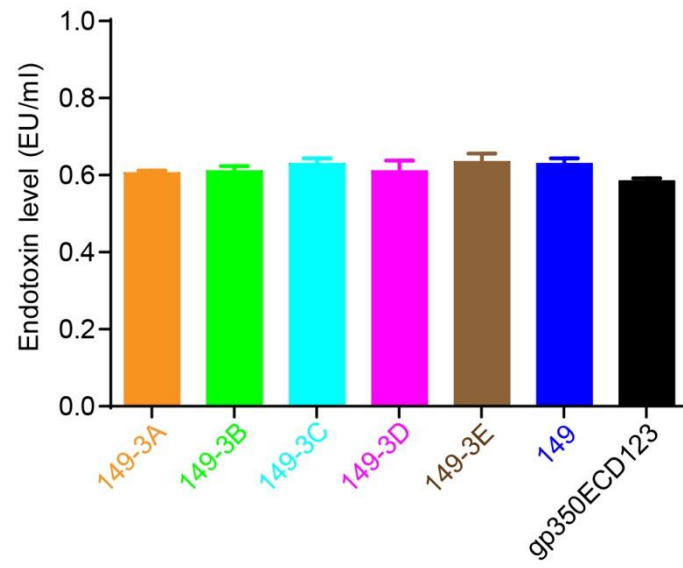


Figure S1 Detection of endotoxin level of different proteins used in immunization assay.

Table S1 Calculation of ID50 values for the serum raised by different proteins

Proteins	149-3A	149-3B	149-3C	149-3D	149-3E	149	gp350ECD123
ID50 ¹	13.43	18.93	ND ²	ND	ND	ND	9.91

¹ Inhibition doses calculated based on data from figure 6B

² ND indicates the ID50 value can not be calculated.