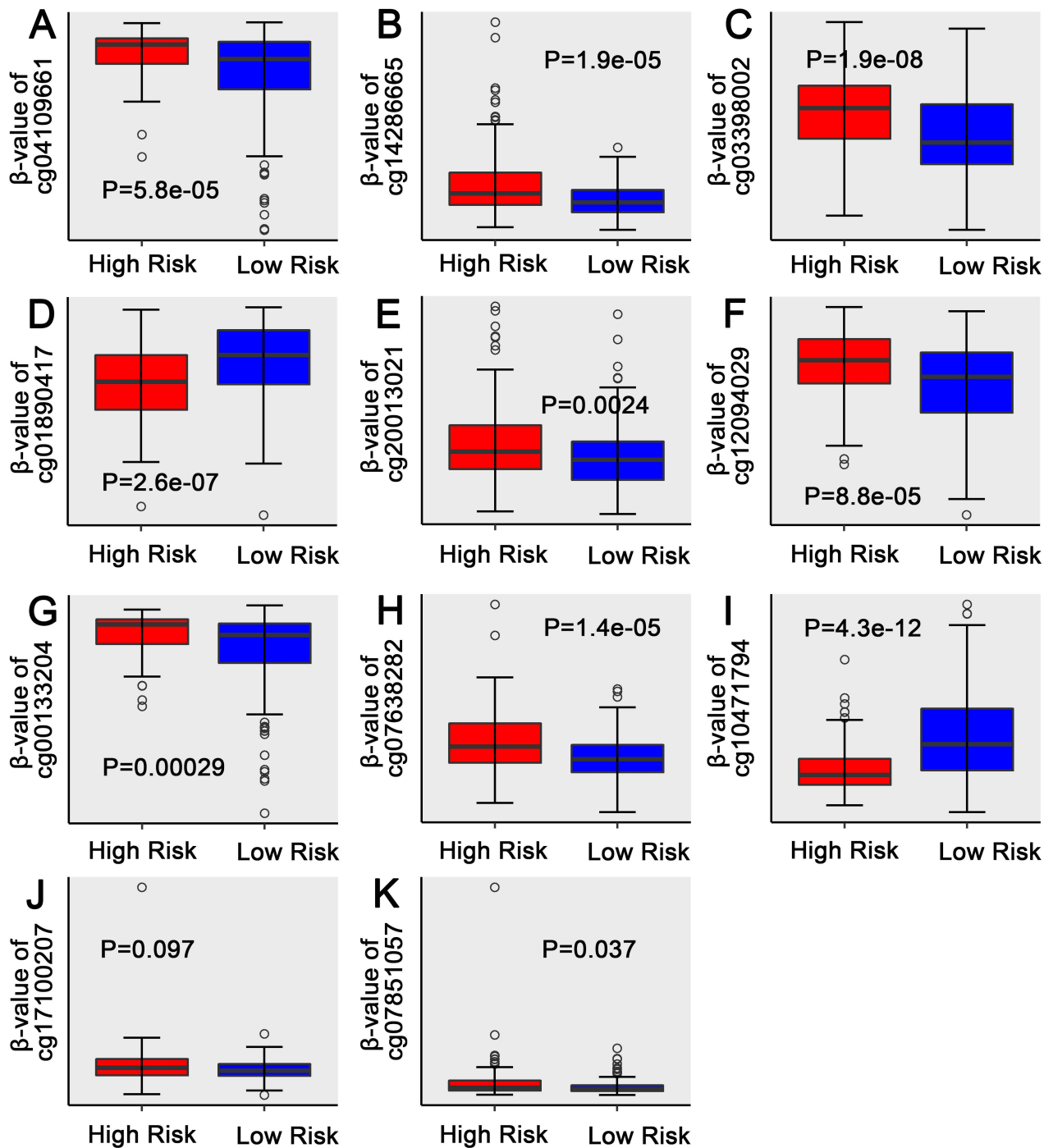
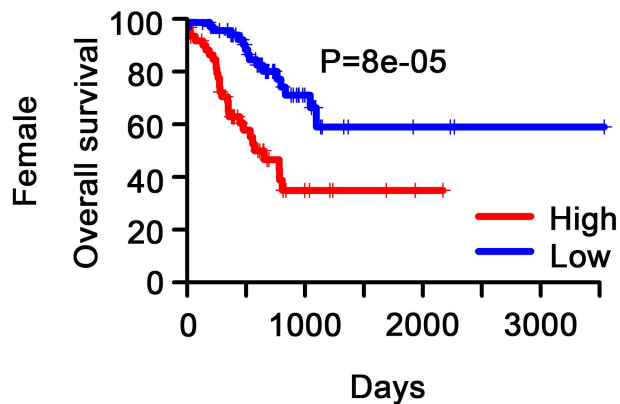


Supplementary Figure S1

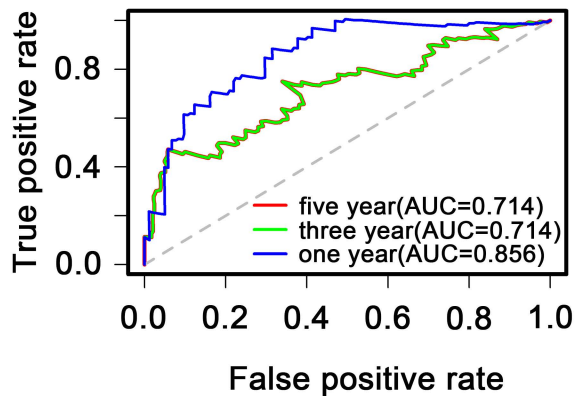


Supplementary Figure S3

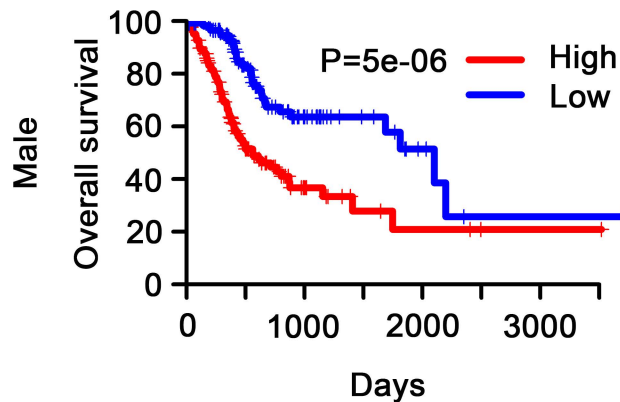
A



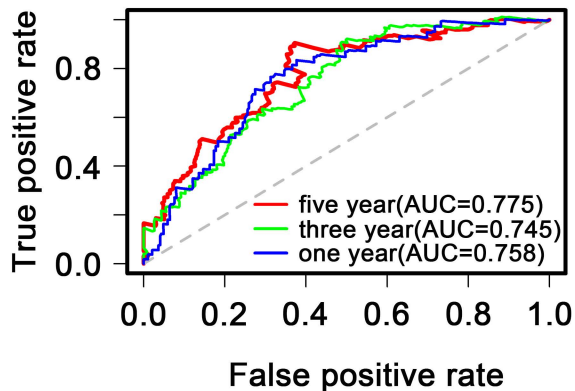
B



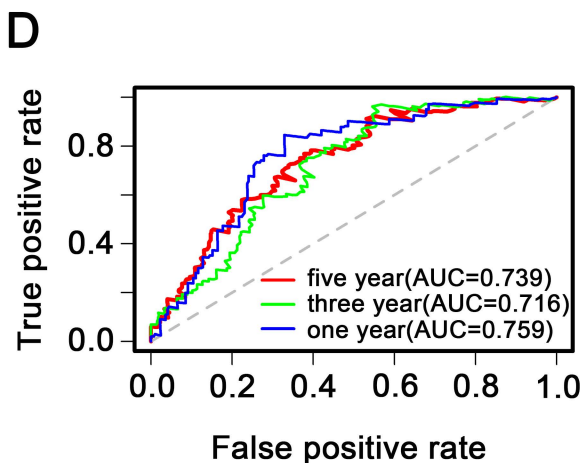
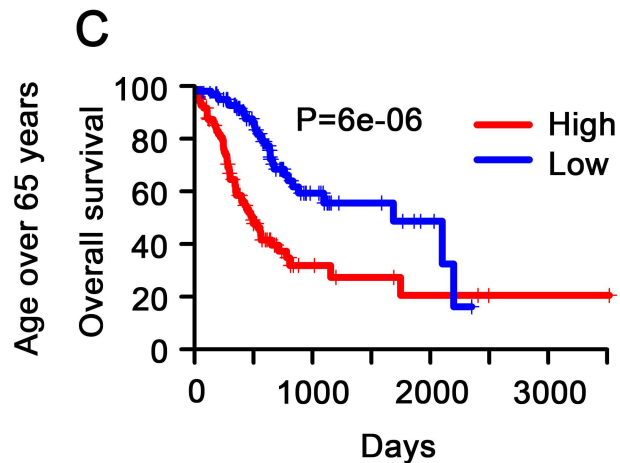
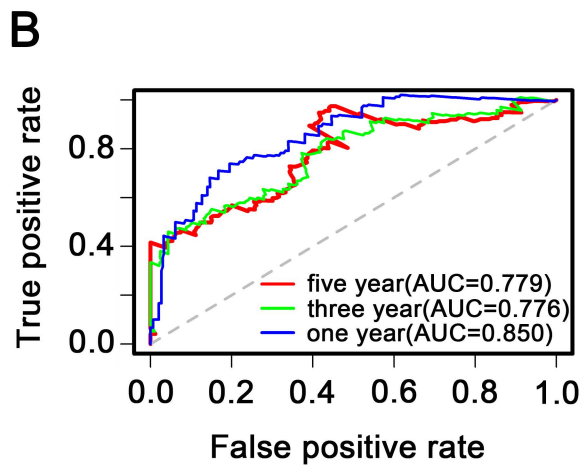
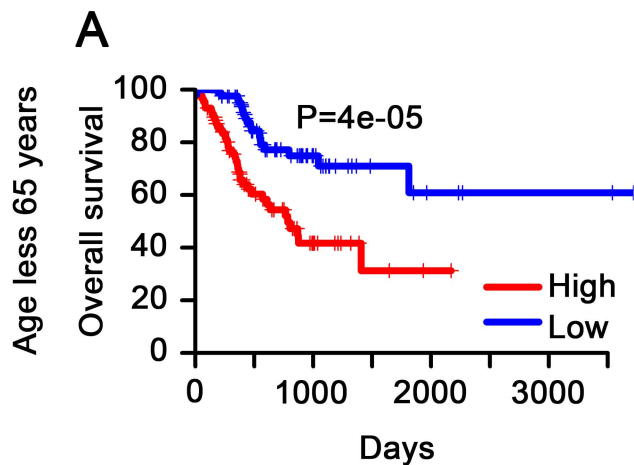
C



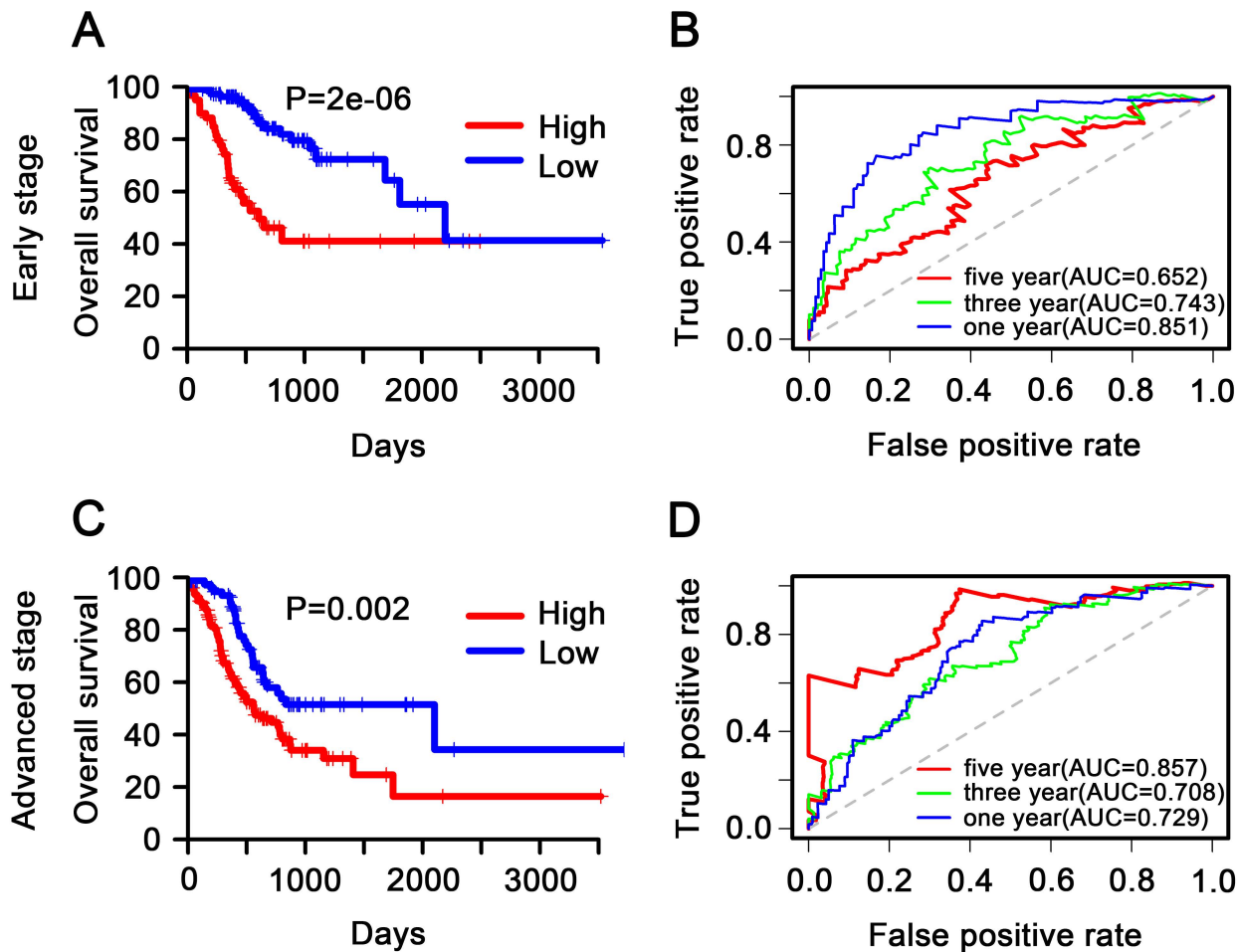
D



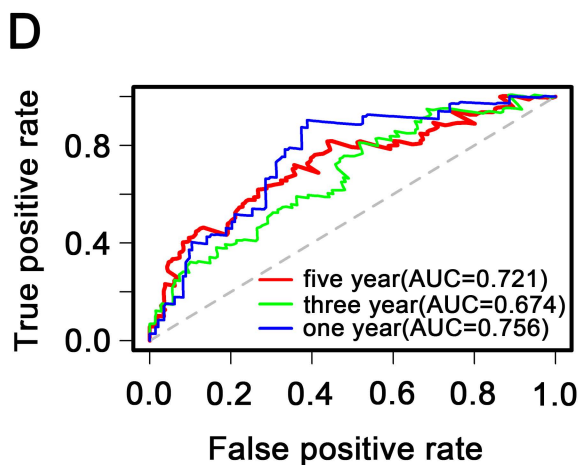
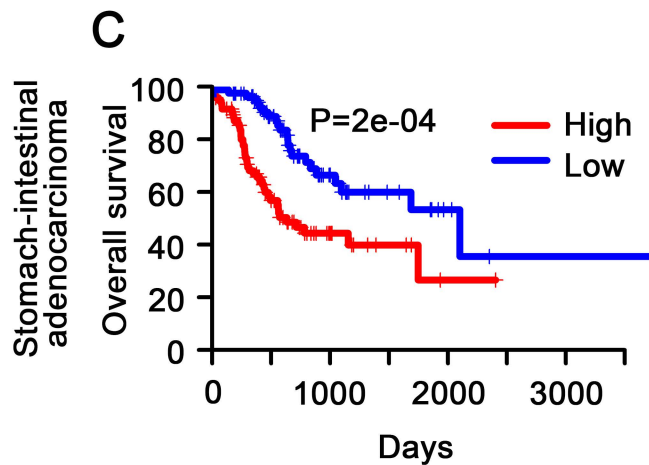
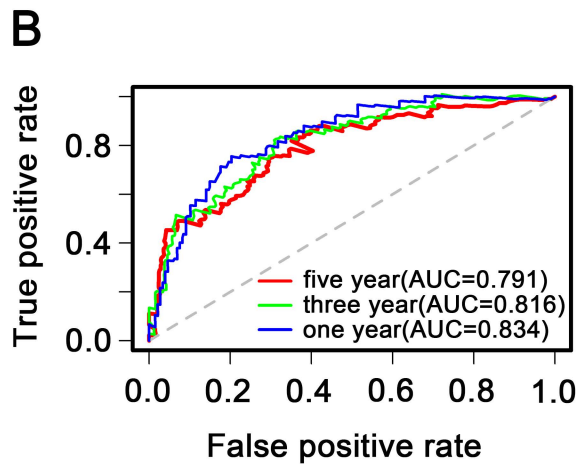
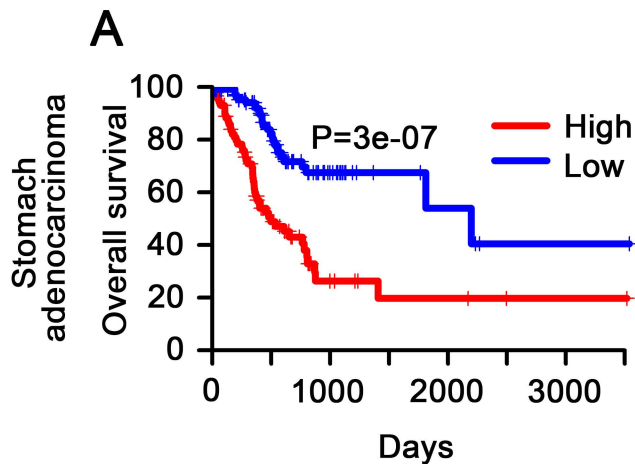
Supplementary Figure S4



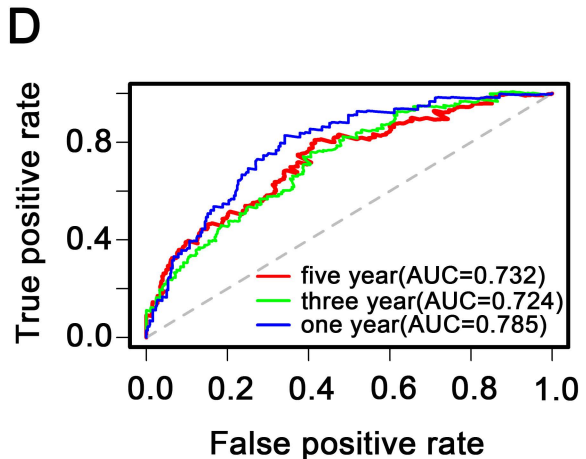
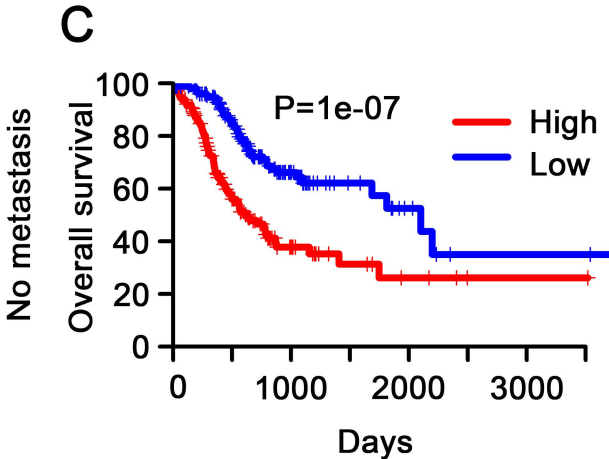
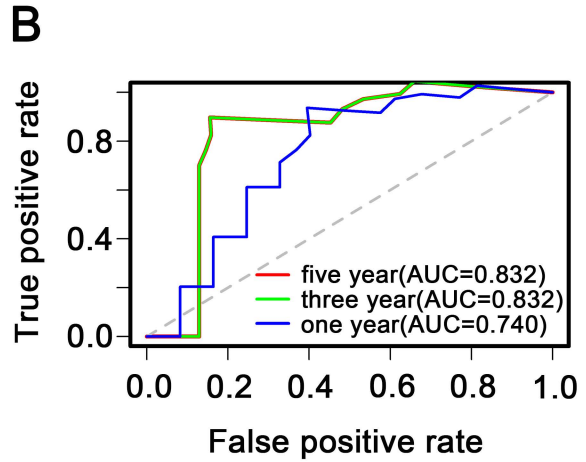
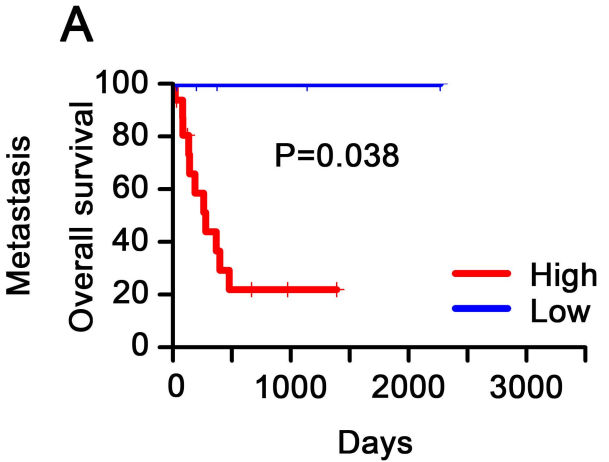
Supplementary Figure S5



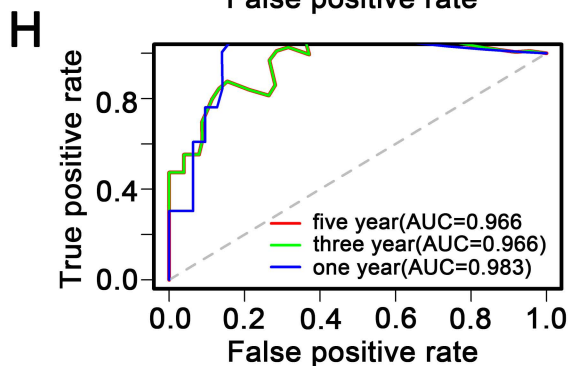
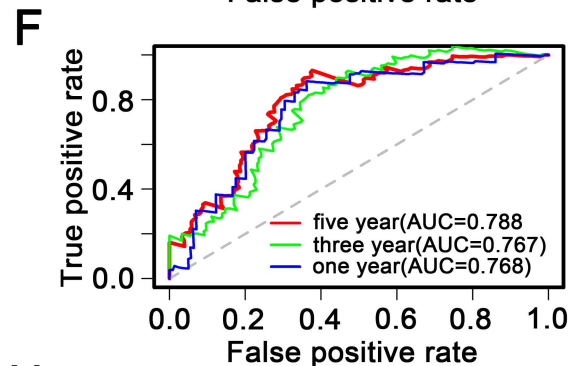
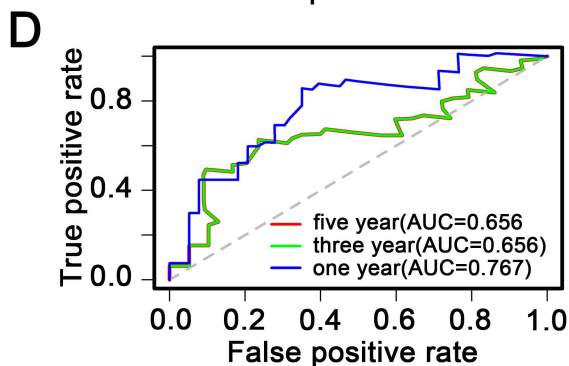
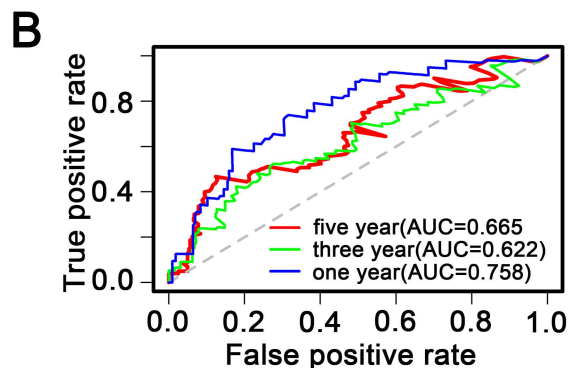
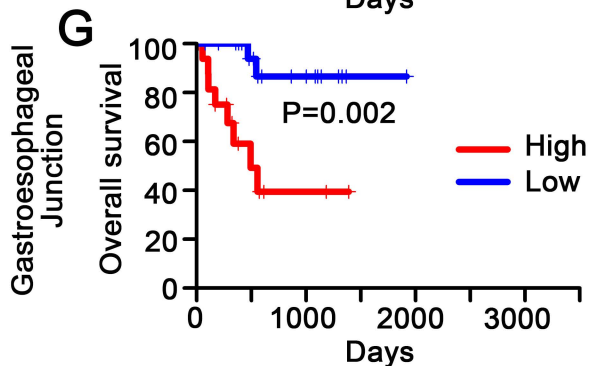
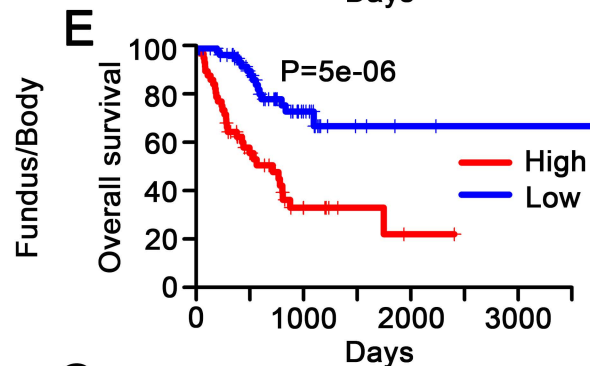
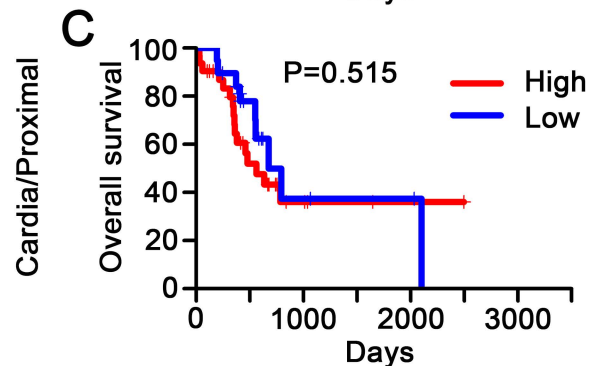
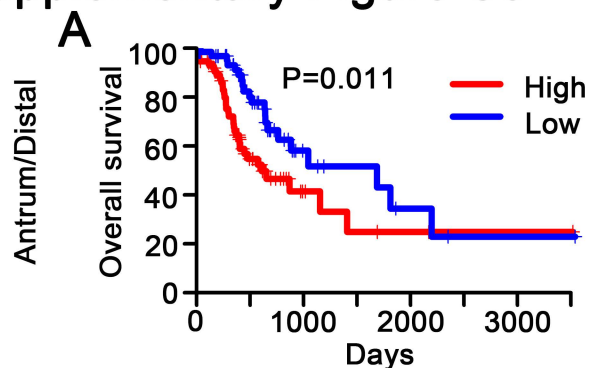
Supplementary Figure S6



Supplementary Figure S7



Supplementary Figure S8



Supplementary Figure legends

Supplementary Figure S1. Boxplots of methylation β values against risk group in the training dataset.

Supplementary Figure S2. Boxplots of methylation β values against risk group in the testing dataset.

Supplementary Figure S3. Kaplan-Meier and ROC analysis of patients with STAD in sub-groups according to sex, respectively. (A, B) Female sub-group. (C, D) Male sub-group.

Supplementary Figure S4. Kaplan-Meier and ROC analysis of patients with STAD in sub-groups according to age, respectively. (A, B) Age less 65 years sub-group. (C, D) Age over 65 years sub-group.

Supplementary Figure S5. Kaplan-Meier and ROC analysis of patients with STAD in sub-groups according to stage, respectively. (A, B) Early stage sub-group. (C, D) Advanced stage sub-group.

Supplementary Figure S6. Kaplan-Meier and ROC analysis of patients with STAD in sub-groups according to pathological type, respectively. (A, B) Stomach adenocarcinoma sub-group. (C, D) Stomach-intestinal adenocarcinoma sub-group.

Supplementary Figure S7. Kaplan-Meier and ROC analysis of patients with STAD in sub-groups according to metastasis status, respectively. (A, B) Metastasis sub-group. (C, D) No metastasis sub-group.

Supplementary Figure S8. Kaplan-Meier and ROC analysis of patients with STAD in sub-groups according to anatomic site, respectively. (A, B) Antrum/Distal sub-group. (C, D) Cardia/Proximal sub-group. (E, F) Fundus/Body sub-group. (G, H) Gastroesophageal Junction sub-group.