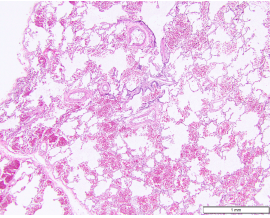
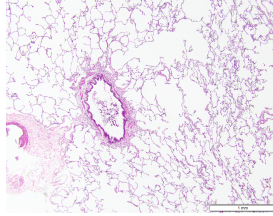


Control Lungs

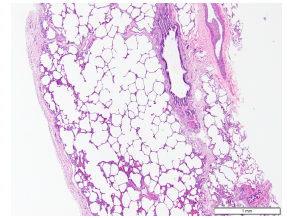
Control 1



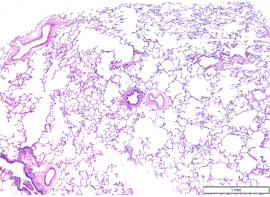
Control 2



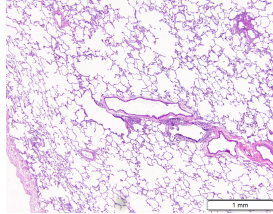
Control 3



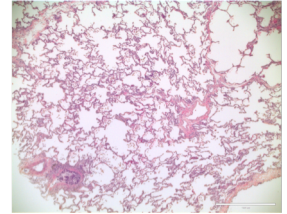
Control 4



Control 5

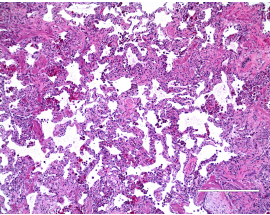


Control 6

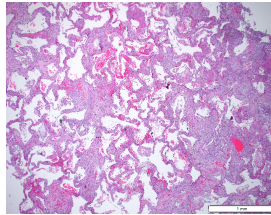


Upper Lobe SSc Lungs

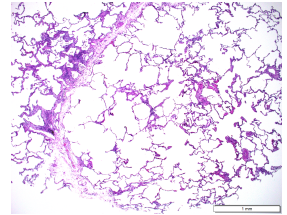
SSC 1



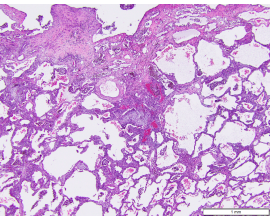
SSC 3



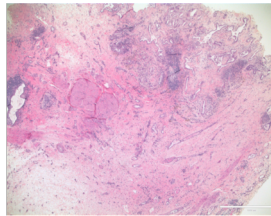
SSC 5



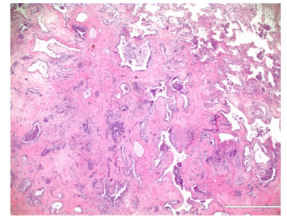
SSC 7



SSC 9

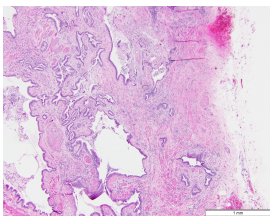


SSC 11

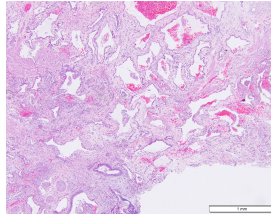


Lower Lobe SSc Lungs

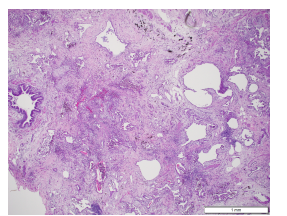
SSC 2



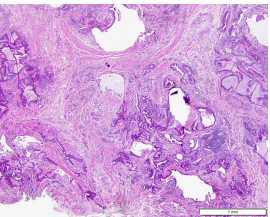
SSC 4



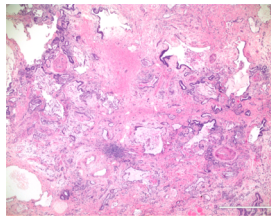
SSC 6



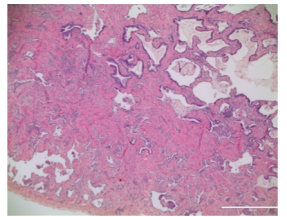
SSC 8



SSC 10



SSC 12



Supplemental Figure 1

H&E stained histopathology of adjacent lung tissue sections from the explanted lungs used, identified by sample id. Scale bar=1mm for all included H&E sections. SSc, systemic sclerosis.