

1

	p53 +ve (%)	Aneuploidy +ve (%)	cyclinA +ve (%)	p16.meth +ve (%)	G2 +ve (%)	hpp1 +ve (%)	runx3 +ve (%)	p53.loh +ve (%)	p16.loh +ve (%)
NDBO (non-progressors) n=74	14 (18.9)	3 (4.1)	15 (20.3)	27 (36.5)	25 (33.8)	61 (82.4)	35 (47.3)	23 (31.1)	52 (70.3)
NDBO (progressors) n=24	8 (33.3)	7 (29.2)	4 (16.7)	10 (41.7)	11 (45.8)	20 (83.3)	17 (70.8)	8 (33.3)	13 (54.2)
ID (non-progressors) n=6	4 (66.7)	2 (33.3)	3 (50.0)	5 (83.3)	2 (33.3)	6 (100.0)	6 (100.0)	1 (16.7)	6 (100.0)
ID (progressors) n=4	2 (50.0)	0 (0.0)	0 (0.0)	2 (50.0)	2 (50.0)	4 (100.0)	3 (75.0)	1 (25.0)	2 (50.0)
LGD (non-progressors) n=5	0 (0.0)	0 (0.0)	1 (20.0)	2 (40.0)	0 (0.0)	5 (100.0)	1 (20.0)	2 (40.0)	2 (40.0)
LGD (progressors) n=14	10 (71.5)	5 (35.7)	8 (57.1)	9 (64.3)	12 (85.7)	14 (100.0)	13 (92.9)	4 (28.6)	10 (71.4)

Supplementary Table 1. Biomarker status according to baseline histology group.

2
3
4
5
6
7
8
9
10
11
12
13
14
15
16
17
18
19
20
21
22
23

1

	Coefficient	Standard Error	P-value
Intercept	0.23	0.048	0.000004
p53 +ve	0.19	0.089	0.037
Aneuploidy +ve	0.39	0.126	0.002

2

3

Supplementary Table 2. Logistic regression coefficients and p-values of p53 and aneuploidy for predicting any progression.

4

5

6

7

8

9

10

11

12

13

14

15

16

17

18

19

20

21

22

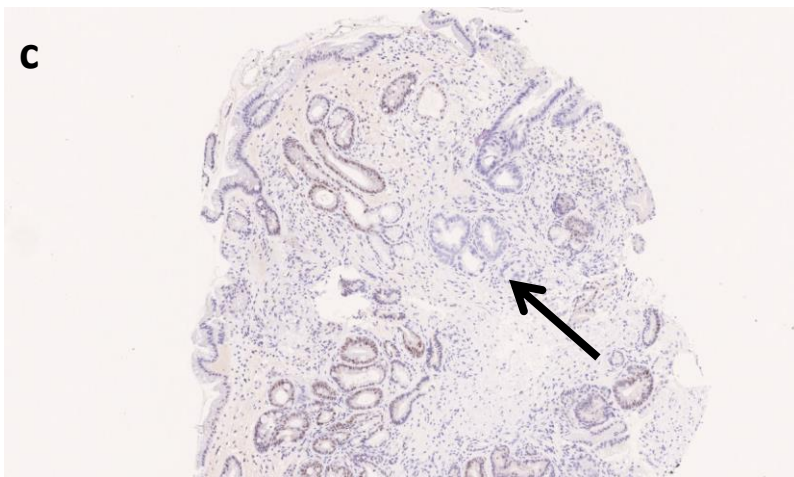
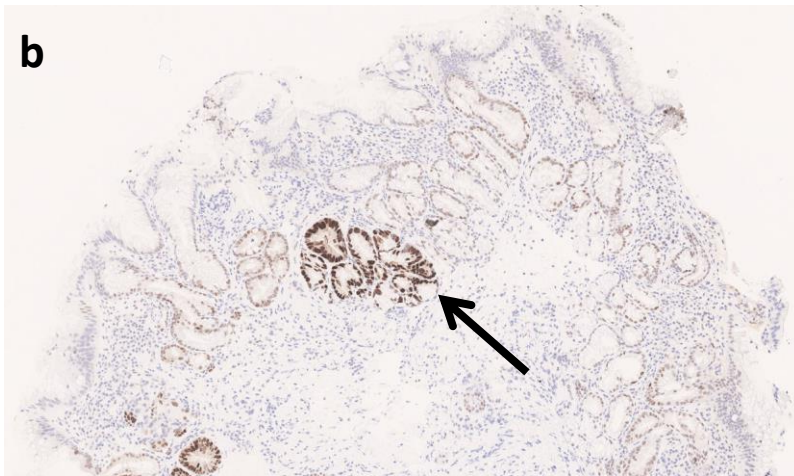
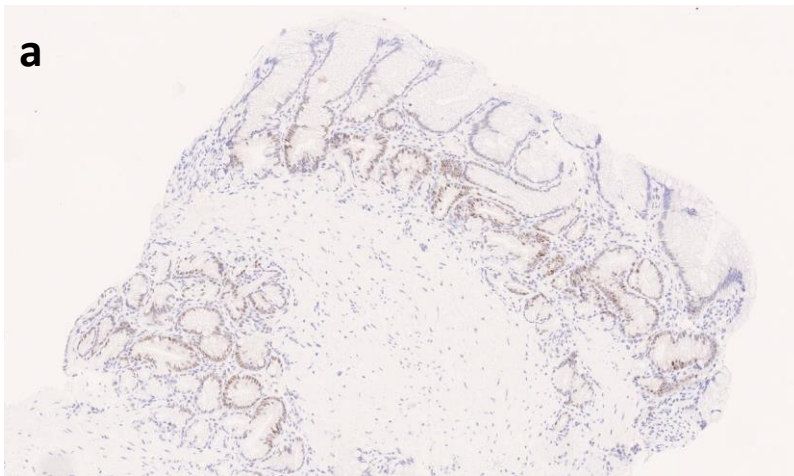
23

24

25

26

27



1
2
3
4
5
6
7
8
9

Supplementary Figure 1. Patterns of p53 staining in Barrett's oesophagus.

a. Normal pattern of nuclear staining; b. Aberrant pattern with focal protein over-expression (arrow) in a case with basal crypt low-grade dysplasia surrounded by normal background staining; c. Aberrant pattern with focal loss of p53 staining (arrow) surrounded by normal background staining in a case with low-grade dysplasia.