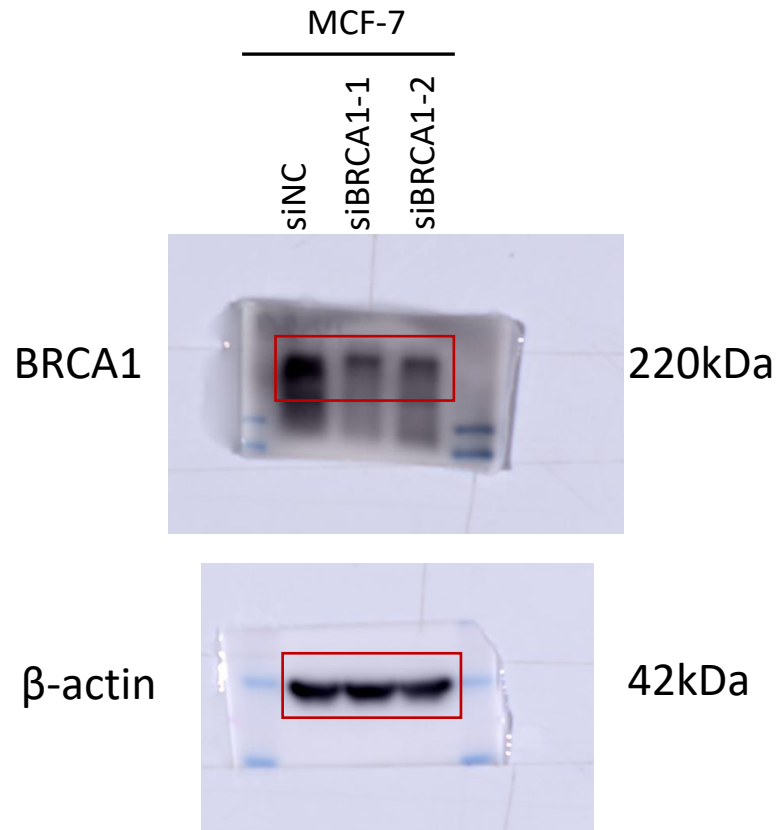
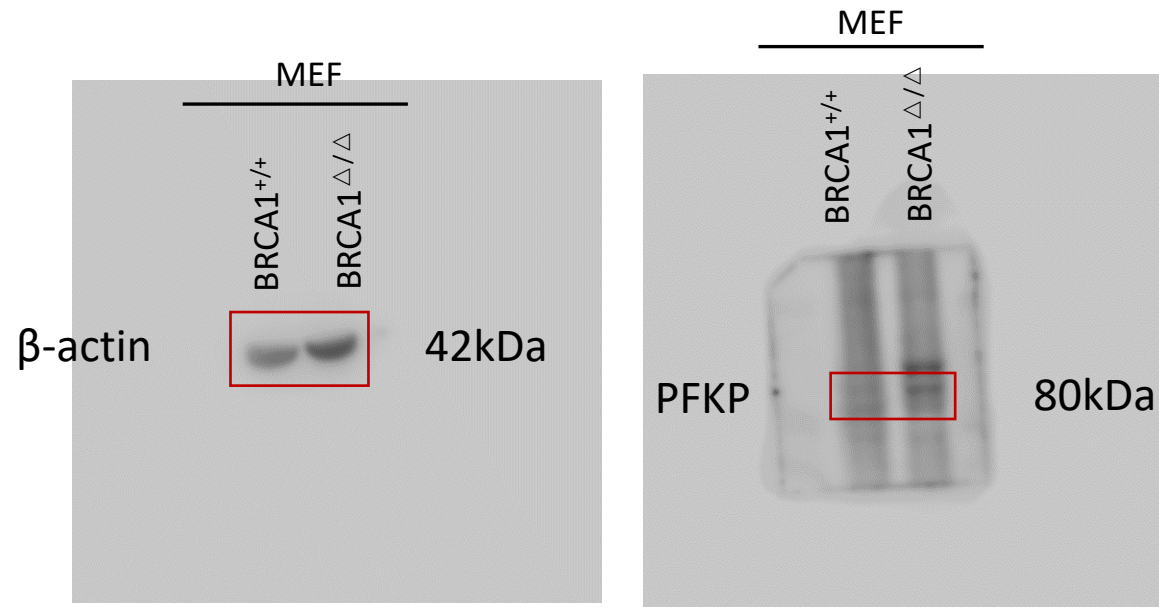


Figure 1E



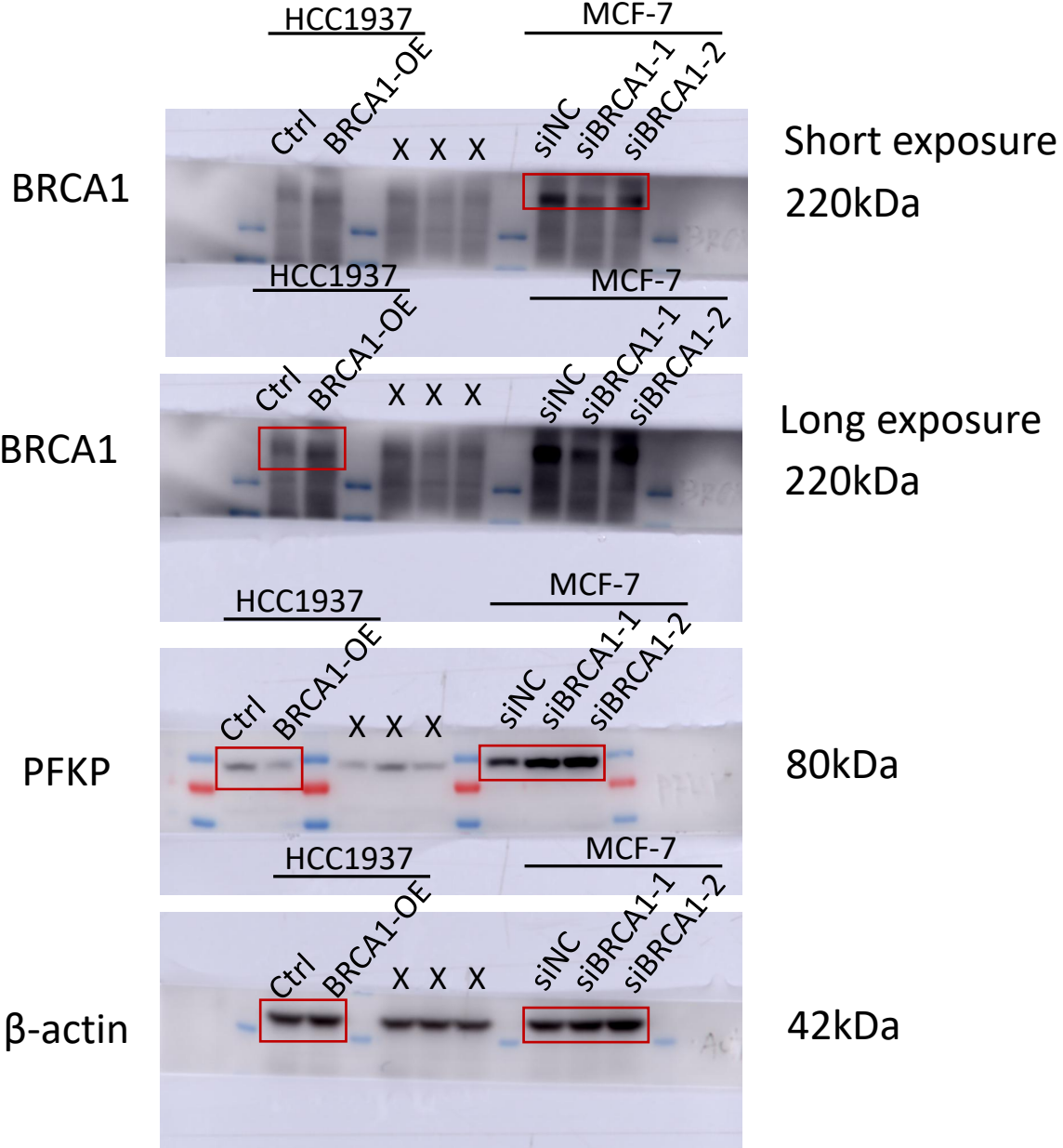
The chemiluminescence signals were detected with Amersham Imager 600 (GE, USA)

Figure 2F



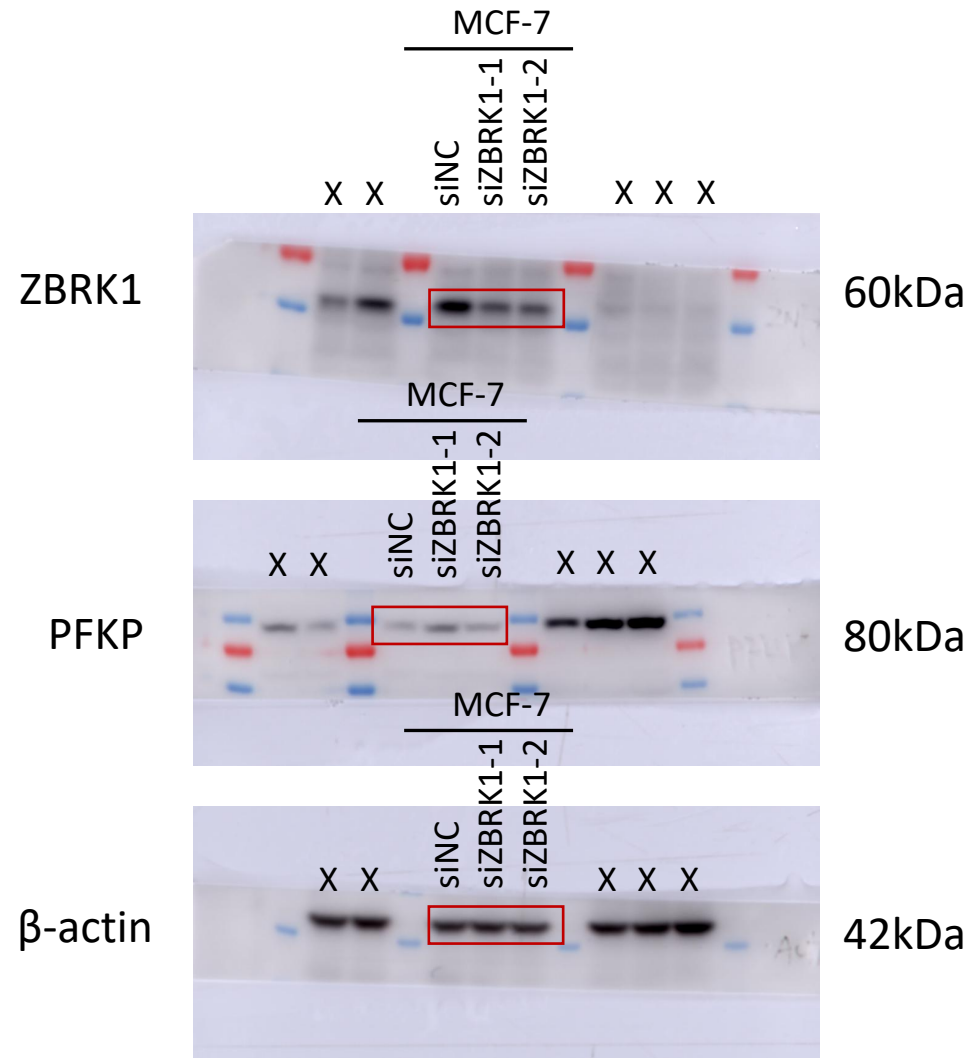
The chemiluminescence signals were detected with Amersham Imager 600 (GE, USA)

Figure 2G, H



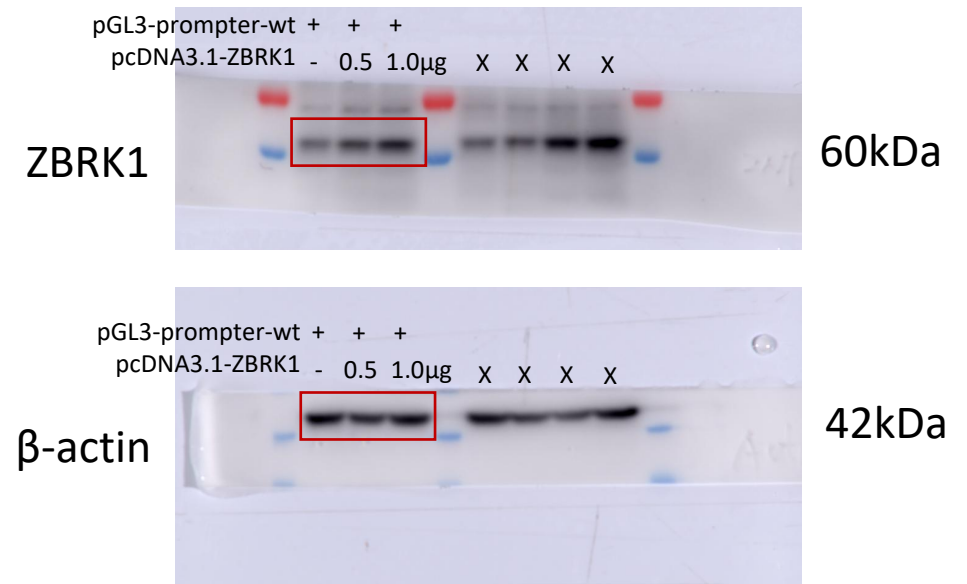
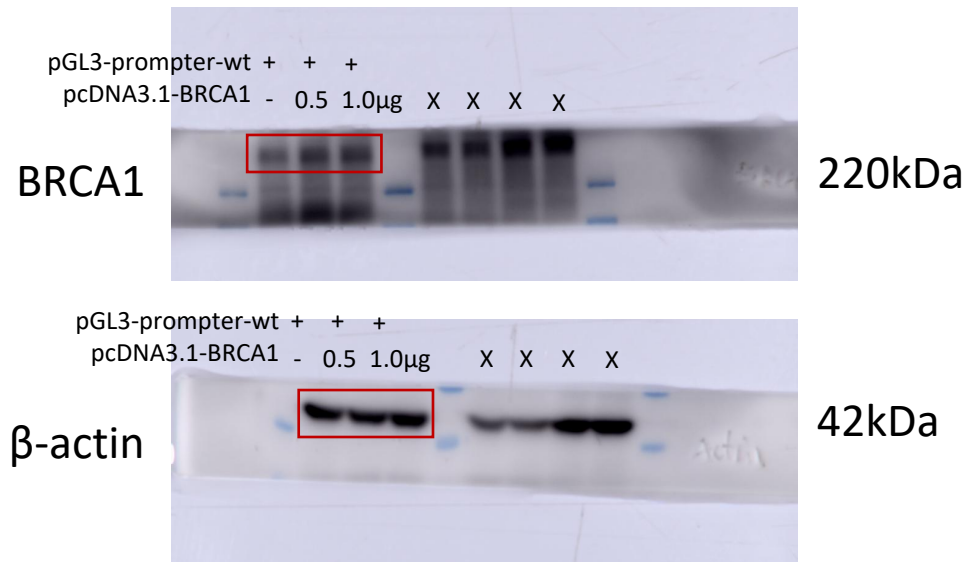
The chemiluminescence signals were detected with Amersham Imager 600 (GE, USA)

Figure 3B



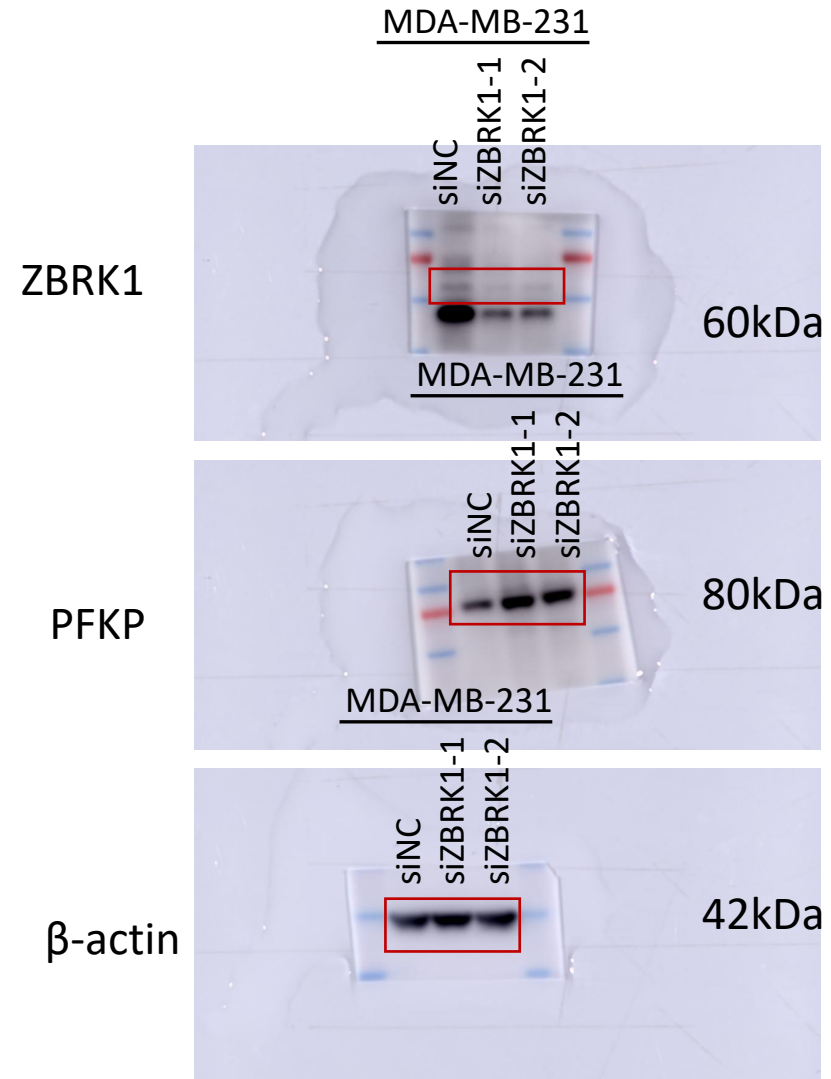
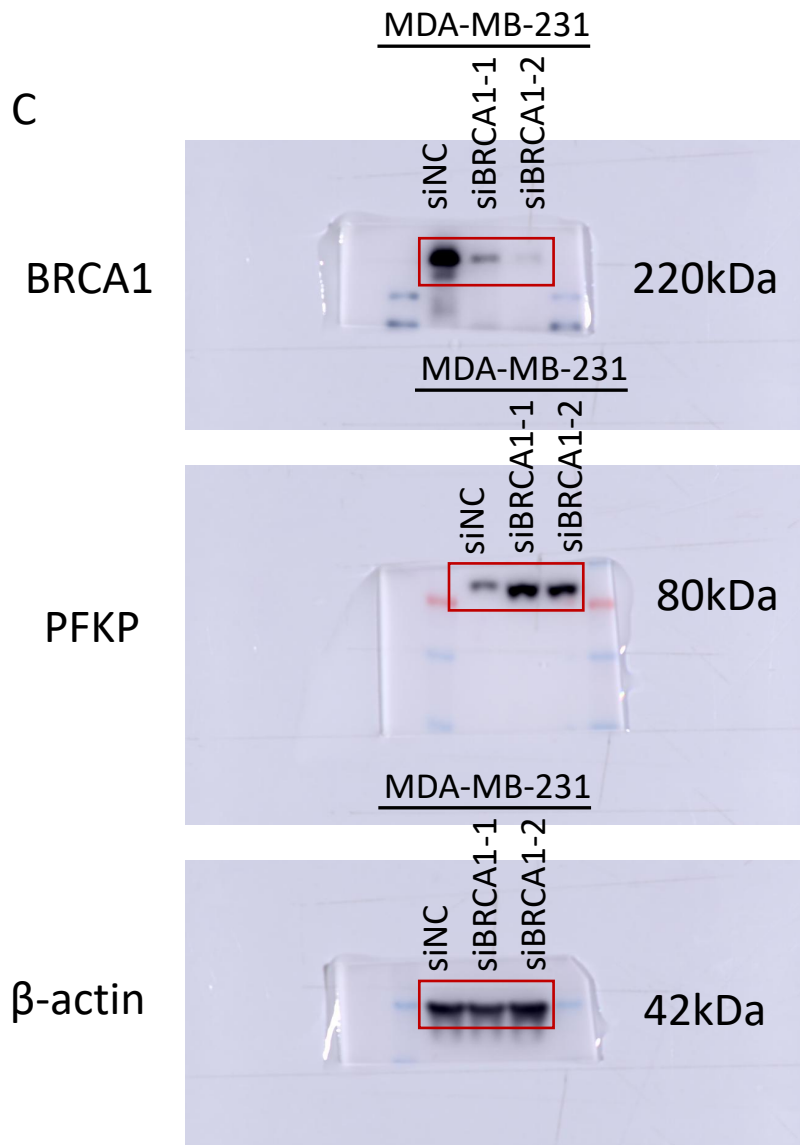
The chemiluminescence signals were detected with Amersham Imager 600 (GE, USA)

Figure 4D, E



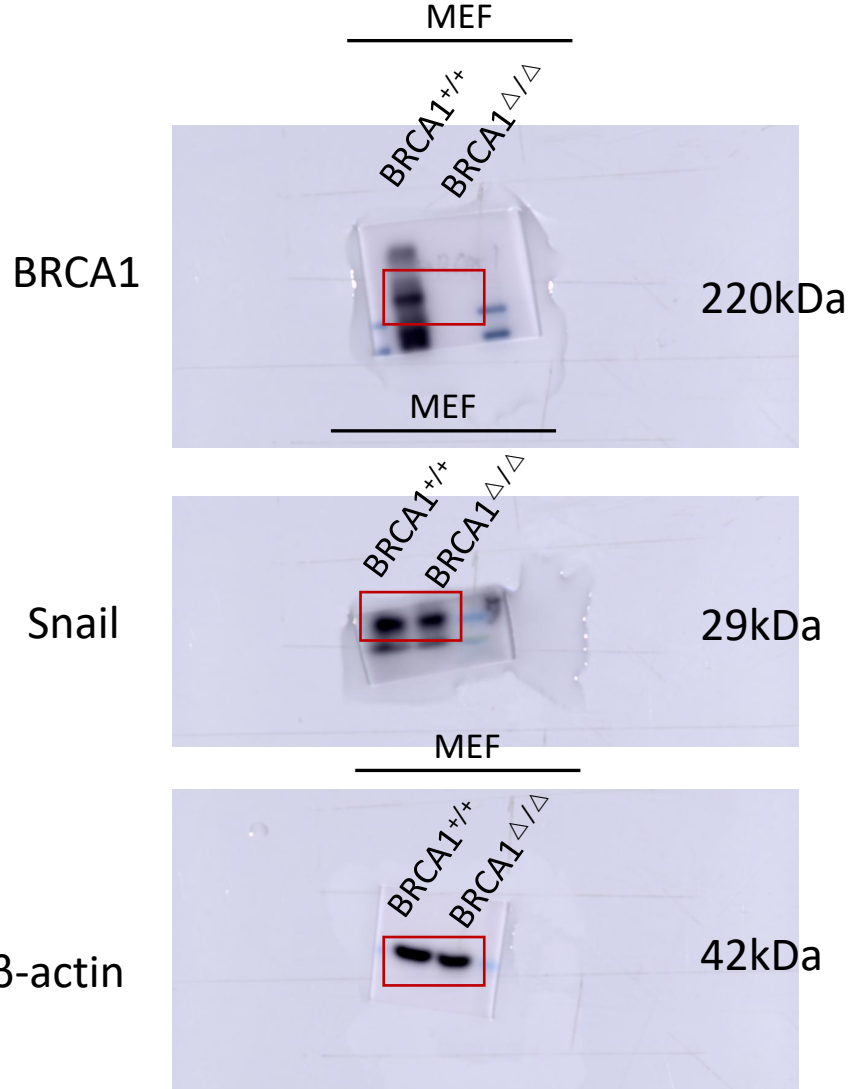
The chemiluminescence signals were detected with Amersham Imager 600 (GE, USA)

Figure S2A, C



The chemiluminescence signals were detected with Amersham Imager 600 (GE, USA)

Figure S5



The chemiluminescence signals were detected with Amersham Imager 600 (GE, USA)