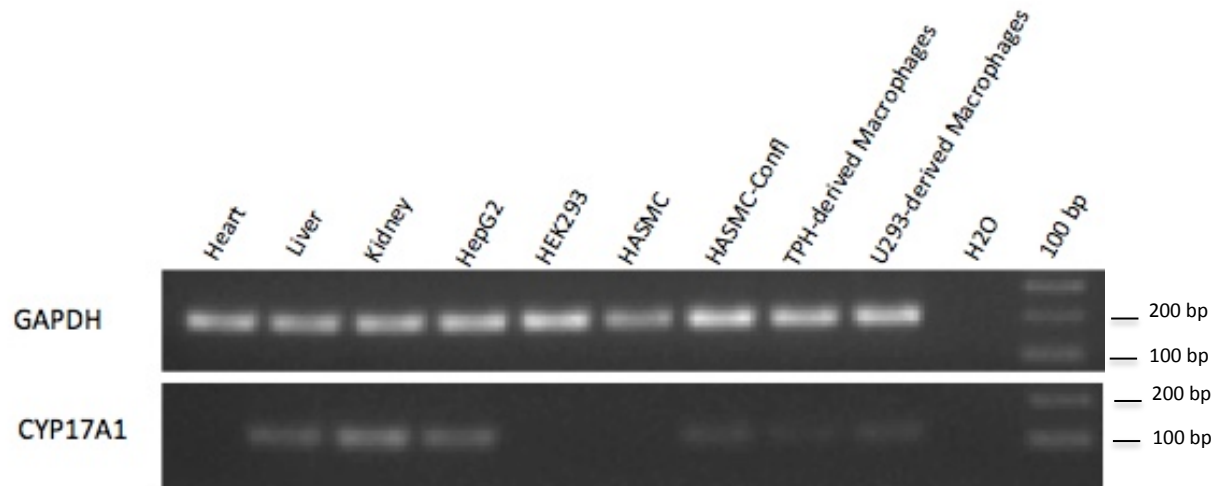


## CYP17A1 deficient XY mice display susceptibility to atherosclerosis, altered lipidomic profile and atypical sex development

Redouane Aherrahrou<sup>a,b</sup>, Alexandra E. Kulle<sup>c</sup>, Natalia Alenina<sup>d,e</sup>, Ralf Werner<sup>f,g</sup>, Simeon Vens-Cappell<sup>h</sup>, Michael Bader<sup>d,e,i,j</sup>, Heribert Schunkert<sup>k</sup>, Jeanette Erdmann<sup>a,l,\*</sup>, Zouhair Aherrahrou<sup>a,l,\*</sup>



### Supplementary Figure 3: qPCR analysis of CYP17A1 in different human atherosclerotic cell lines and organs:

Gene expression analysis of CYP17A1 was performed in various human tissues: Heart, Liver, Kidney, and cells types: liver cells (HepG2), human embryonic kidney cells (HEK293), Human aortic smooth muscle cells (HASMC), confluent HASMC, TPH-1 and U293 monocytes-derived macrophages cells.