

Endoplasmic reticulum stress signalling induces casein kinase 1-dependent formation of cytosolic TDP-43 inclusions in motor neuron-like cells

David A. Hicks^{1,2*}, Laura L. Cross¹, Ritchie Williamson¹, and Marcus Rattray^{1*}

¹*School of Pharmacy and Medical Sciences, Faculty of Life Sciences, University of Bradford, Richmond Road, Bradford, BD7 1DP, United Kingdom*

²*Current address: Division of Neuroscience & Experimental Psychology, School of Biological Sciences, Faculty of Biology, Medicine and Health, University of Manchester, Oxford Road, Manchester, M13 9PT*

*To whom correspondence and reprint requests should be addressed:

David A. Hicks, Faculty of Biology, Medicine and Health, AV Hill Building, University of Manchester; david.hicks-2@manchester.ac.uk; Tel +44 (0)161 3060502; ORCID: [0000-0001-6045-1063](https://orcid.org/0000-0001-6045-1063)

Marcus Rattray, School of Pharmacy and Medical Sciences, Faculty of Life Sciences, University of Bradford; m.rattray@bradford.ac.uk; Tel +44 (0)1274 234675

Running title: Induction of TDP-43 cytoplasmic accumulation

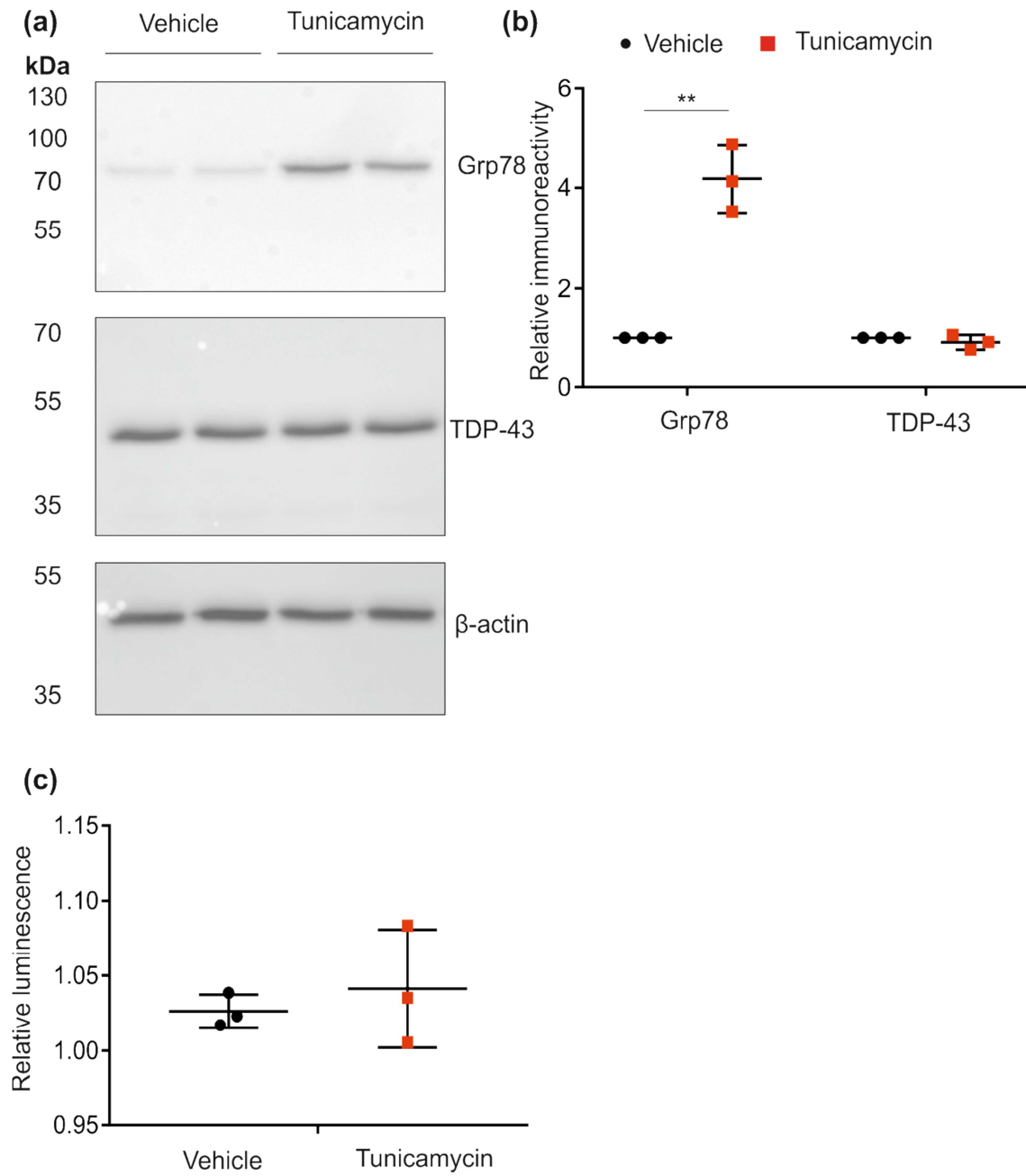


Figure S1

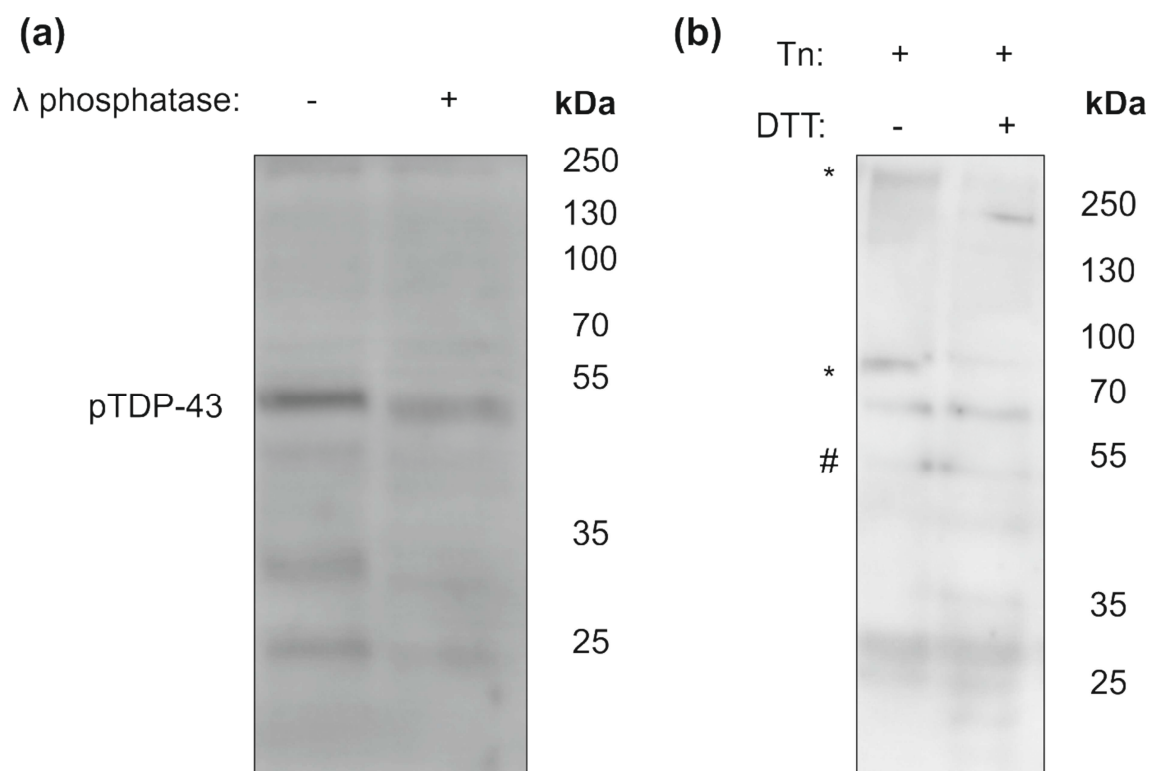


Figure S2