

Supplemental Figure S1. (a – c) Representative micrographs depicting staining in biopsies obtained at day 4 post-transplant for (a) MDA (at 200X magnification) as a measure of oxidative damage, (b) CD68 (at 400X magnification) as a measure of macrophage infiltration, and (c) MPO (at 400X magnification) as a measure of neutrophil infiltration. (d) Quantitative assessment of MDA staining in biopsies obtained at day 4 post-transplant - G1 (vehicle, n=3), G2 (rhC1INH +heparin, n=3), and G3 (heparin, n=2), one G3 biopsy was excluded by outlier test. Data expressed as area fraction normalized to G1-Vehicle average. (e) Quantitative assessment of CD68 and MPO staining in biopsies obtained at day 4 post-transplant - G1 (vehicle, n=3), G2 (rhC1INH+heparin, n=3), and G3 (heparin, n=3). Data expressed as mean values percent positive (+) cells \pm SEM.

Figure S1

Day 7

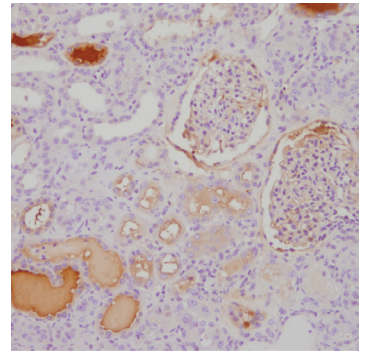
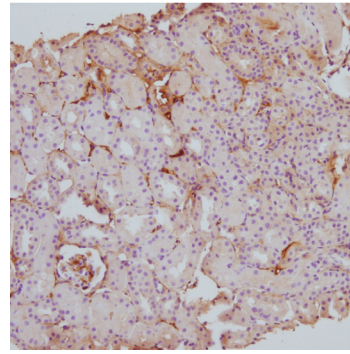
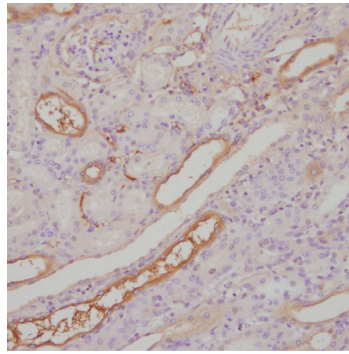
G1 - Vehicle

G2 - rhC1INH + heparin

G3 - Heparin

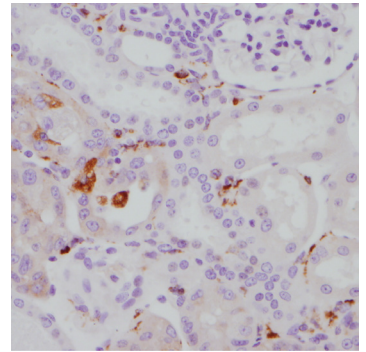
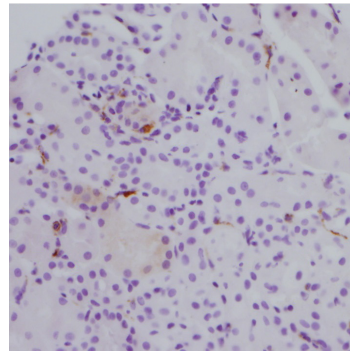
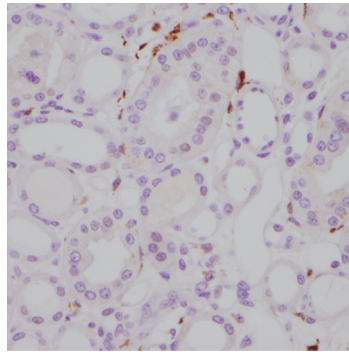
A

MDA
200x



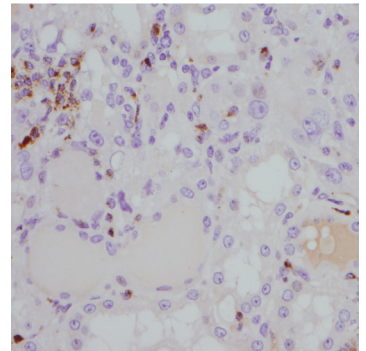
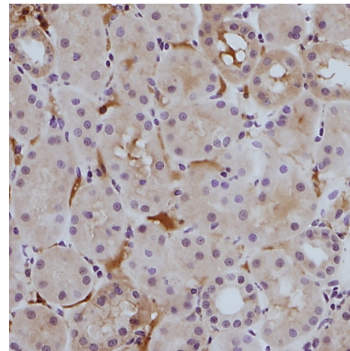
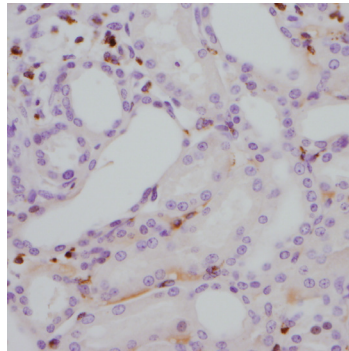
B

CD68
400x

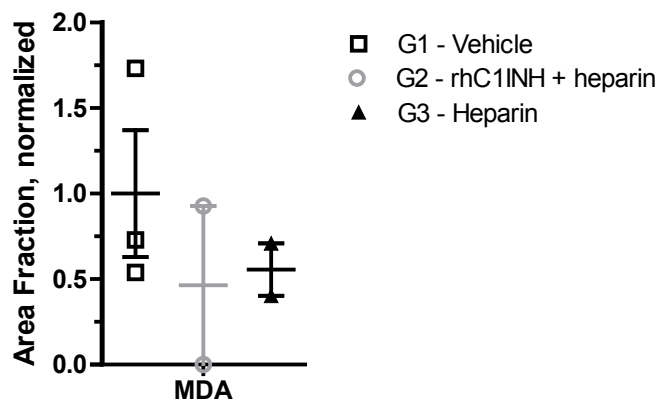


C

MPO
400x



D



E

