

Supplemental Data

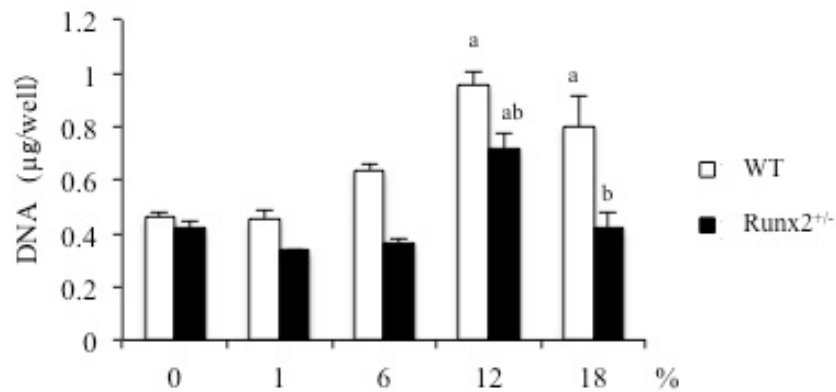


Fig. S1. Effect of stretch value on proliferation of wild-type and Runx2^{+/-} BMSCs. At 24 hours after 0, 1, 6, 12 and 18 % stretch, the proliferation of wild-type and Runx2^{+/-} BMSCs were evaluated. Values are averages \pm SD (n = 3). a, significantly different between corresponding unstretched and stretched wild-type and Runx2^{+/-} BMSCs. b, significantly different between stretched wild-type and Runx2^{+/-} BMSCs.

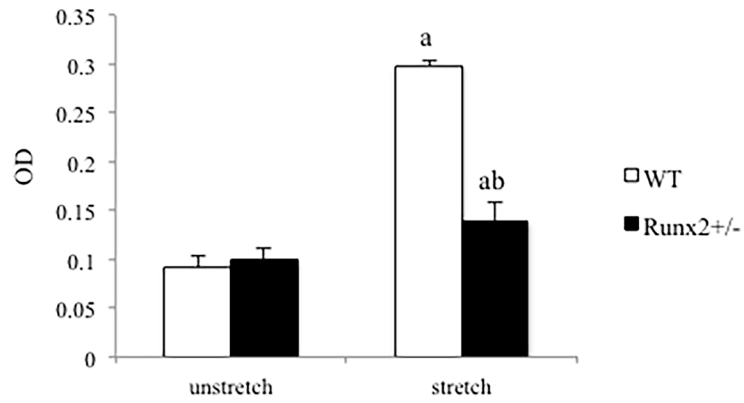


Fig. S2. Effect of stretch on the proliferation in wild-type and Runx2^{+/-} BMSCs by using CCK8. At 24 hours after 12% stretch, the proliferation of wild-type and Runx2^{+/-} BMSCs were detected by CCK8. Values are averages \pm SD (n = 3). a, significantly different between corresponding unstretched and stretched wild-type and Runx2^{+/-} BMSCs. b, significantly different between stretched wild-type and Runx2^{+/-} BMSCs.

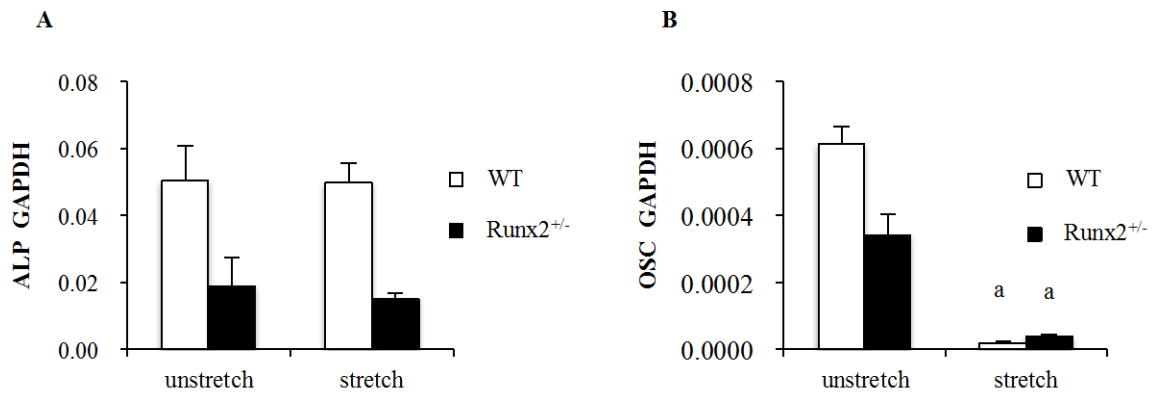


Fig. S3. ALP and Runx2 mRNA expression in wild-type and Runx2^{+/-} BMSCs after stretch. ALP (A) and OSC (B) mRNA expression in BMSCs stretched for 6 hours. Values are averages \pm SD (n = 3). a, significantly different between corresponding unstretched and stretched wild-type and Runx2^{+/-} BMSCs.

Table. S1. Specific primers used for real-time RT-PCR.

Gene		Primer sequence	Size (bp)	Gene Bank Accession number
OSC	forward	5'-AAGCAGGAGGGCAATAAGGT-3'	152	X04142
	reverse	5'-TAGGCGGTCTTCAAGCCATA-3'		
ALP	forward	5'-AACCCAGAGACAAGCATTCC-3'	151	X13409
	reverse	5'-GAGAGVGAAGGGTCAGTCAG-3'		
Runx2	forward	5'-CCCAGCCACCTTTACCTACA-3'	150	NM009820
	reverse	5'-TATGGAGTGCTGCTGGTCTG-3'		
GAPDH	forward	5'-TGCACCACCAACTGCTTAG-3'	177	NM008084
	reverse	5'-GGATGCAGGGATGATGTTC-3'		