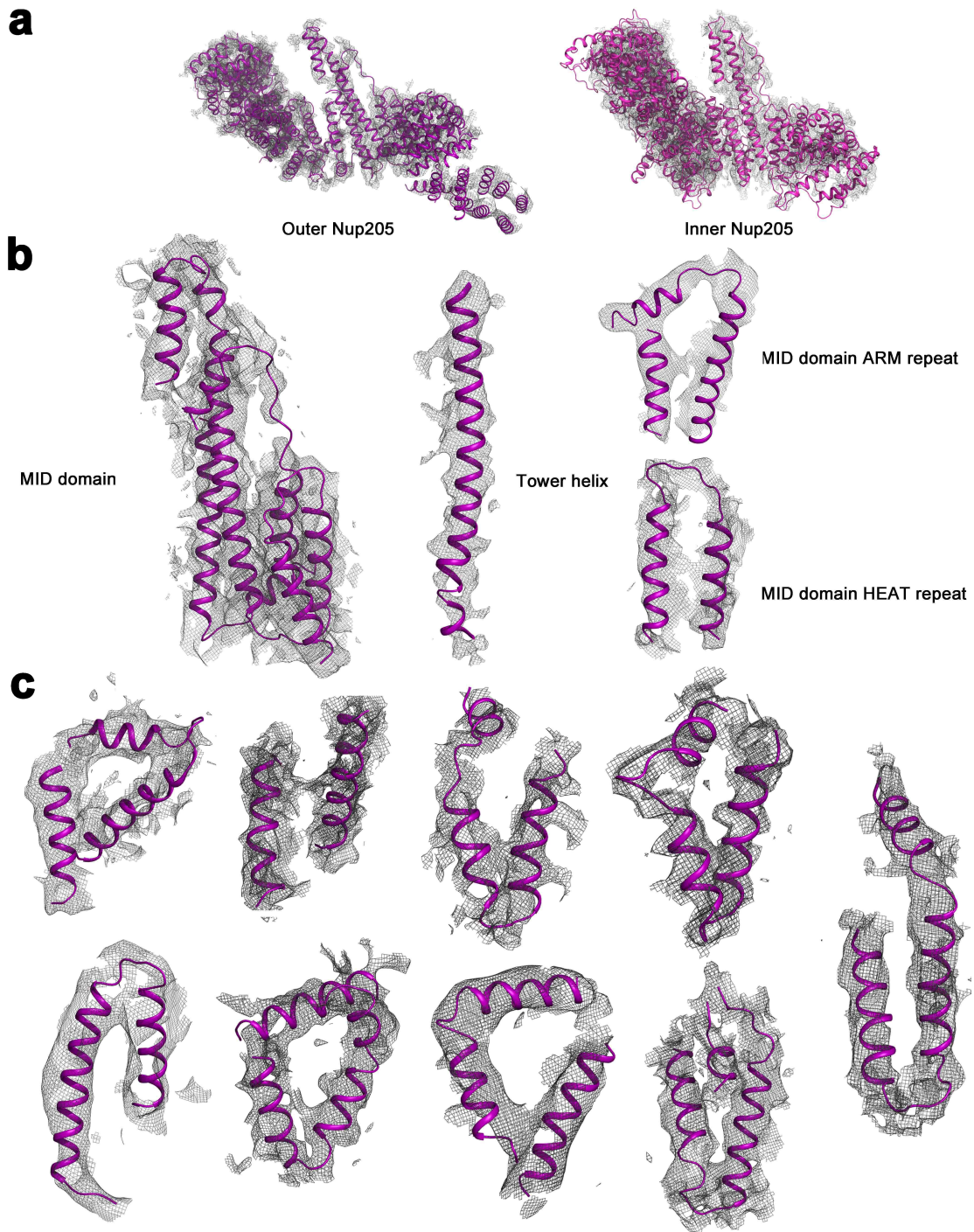


Supplementary information, Fig. S8



Supplementary information, Fig. S8 | The EM density maps for Nup205. **a**, The overall EM density maps for the outer and inner Nup205. **b**, The EM density maps for the MID domain of outer Nup205, which contains a characteristic Tower helix. The ARM repeat and HEAT repeat exhibit contrasting features for their EM density. **c**, Representative EM density maps for a number of discrete α -helices of outer Nup205.

All EM density maps in this figure were prepared using the masked Core region map with a contour level between 15σ and 25σ .