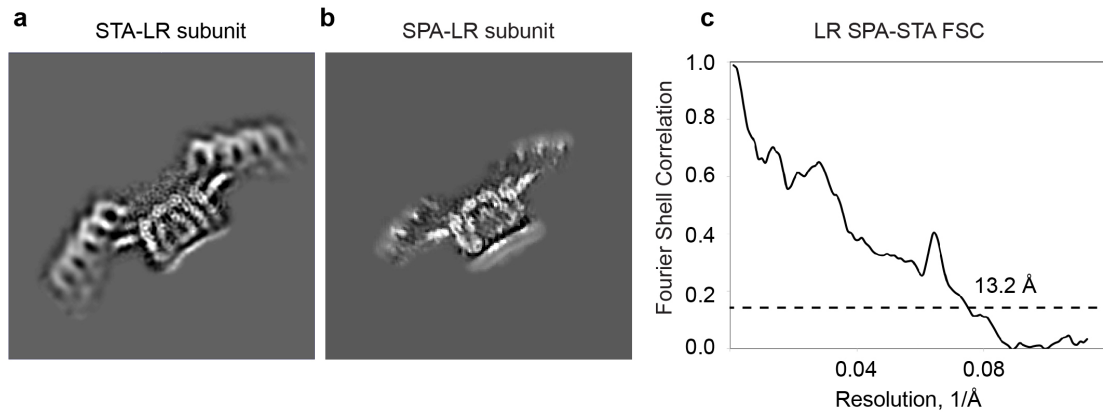


Supplementary information, Fig. S10



Supplementary information, Fig. S10 | Comparison of the STA and SPA reconstruction of the LR subunit. **a**, A central slice of the LR reconstruction by the STA approach. The average local resolution in the Finger and Grid domains is 12.6 Å. **b**, A central slice of the LR reconstruction by the SPA approach. For both the STA and SPA reconstructions, similar features are observed for the Finger and the Grid domains. In contrast to STA-based reconstruction, the two Bumper domains are missing in the SPA-based reconstruction, due to application of a considerably smaller alignment mask. **c**, The FSC curve of the SPA reconstruction with the STA reconstruction shows agreement of up to 13.2 Å based on the FSC criterion of 0.143. A common mask was used.