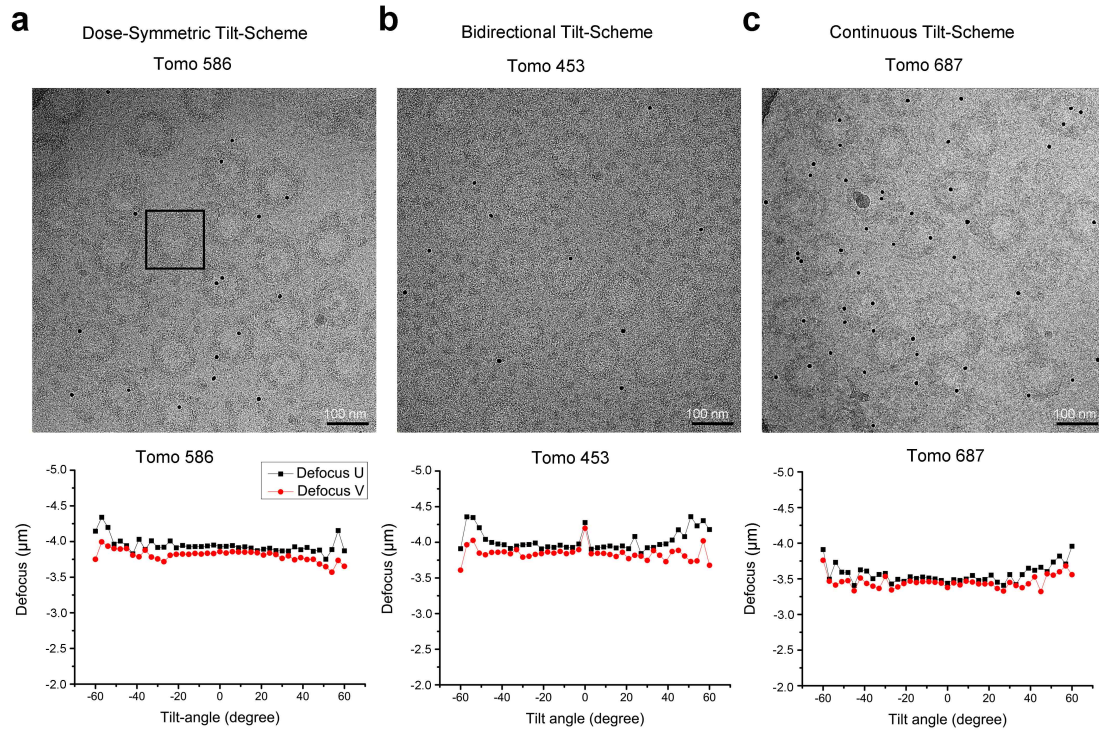


## Supplementary information, Fig. S1



**Supplementary information, Fig. S1 | Representative 0°-tilt micrographs and the associated defocus values for three tilt-schemes used in this study.** **a**, Dose-symmetric tilt-scheme ( $-60^\circ$  to  $60^\circ$ ). 240 tilt-series were recorded. Shown here (tomo 586) is a representative example. **b**, Bidirectional tilt-scheme ( $0^\circ$  to  $-60^\circ$  and  $3^\circ$  to  $60^\circ$ ). 874 tilt-series were recorded. Shown here (tomo 453) is a representative example. **c**, Continuous tilt-scheme ( $-60^\circ$  to  $60^\circ$ ). 311 tilt-series were recorded. Shown here (tomo 687) is a representative example. In each of the three cases, the  $0^\circ$ -tilt micrograph and the defocus value for the specified tilt-series are shown in the upper and lower panels, respectively.