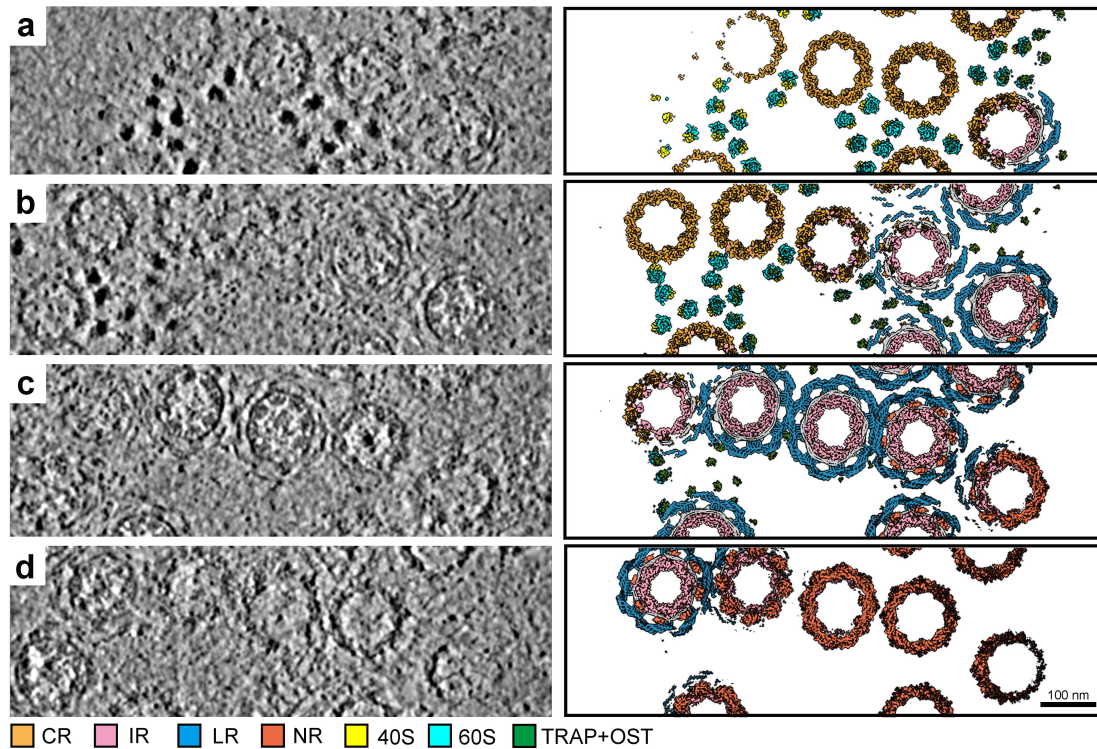


Supplementary information, Fig. S4



Supplementary information, Fig. S4 | Three-dimensional organization of the NPC particles in a local region of the *X. laevis* NE. Four consecutive tomographic 2D slices are displayed in the left columns of panels **a** through **d**, with panel **a** on the cytoplasmic side and panel **d** on the nucleoplasmic side. These slices, each measuring 8.89 Å in thickness, are evenly spaced with a separation of 17.78 nm between two neighbouring slices. Structural interpretation of the regions is shown in the right columns of panels **a** through **d**, where the reconstructions for the NPC subunits and ribosomes were back-projected onto the original tomograms based on the refined coordinates of the individual particles. Ribosomes: 40S: Small ribosome subunit; 60S: Large ribosome subunit; TRAP: translocon-associated protein complex; OST: oligosaccharyl transferase.