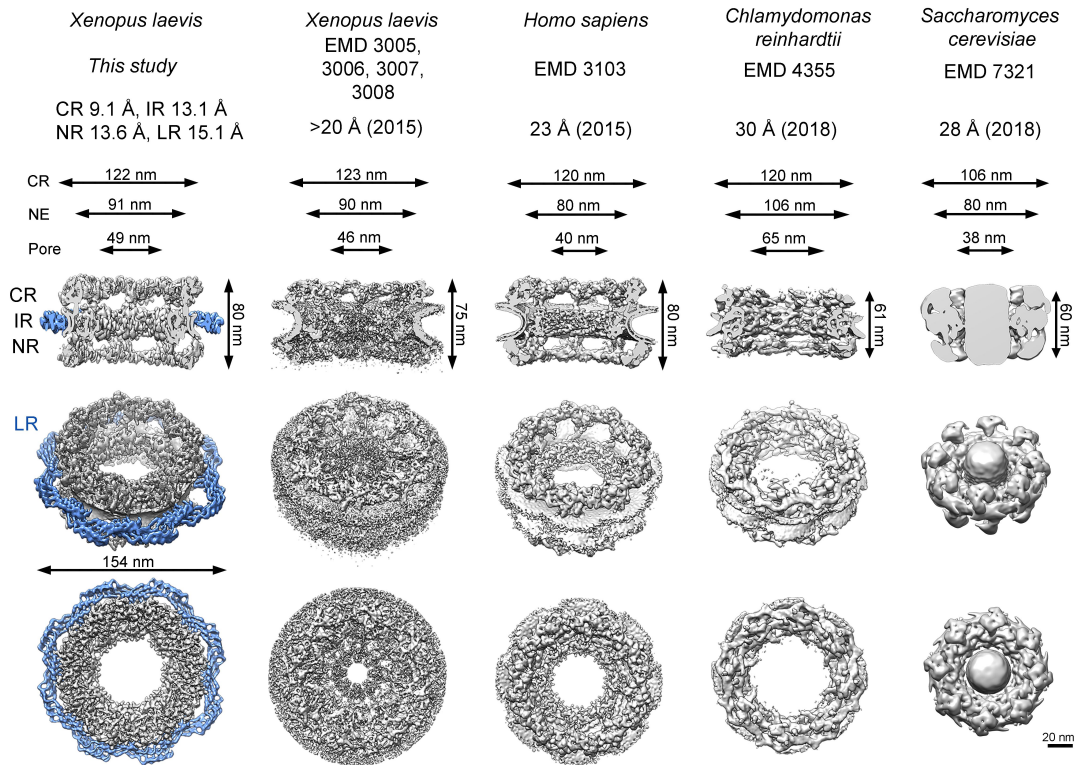


## Supplementary information, Fig. S7



**Supplementary information, Fig. S7 | Structural comparison of the cryo-ET reconstructions of the NPC.** Surface representations of cryo-ET reconstructions are shown to scale for *X. laevis* (this study), *X. laevis* (accession code EMD 3005-3008)<sup>1</sup>, *Homo sapiens* (EMD 3103)<sup>2</sup>, *Chlamydomonas reinhardtii* (EMD 4355)<sup>3</sup> and *Saccharomyces cerevisiae* (EMD 7321)<sup>4</sup>. Three views of each reconstruction are shown: cross-section side view, 45°-tilt view, and top view from cytoplasmic side. The LR observed in this study is highlighted in marine.

### References

- 1 Eibauer, M. *et al.* Structure and gating of the nuclear pore complex. *Nat Commun* **6**, 7532, doi:10.1038/ncomms8532 (2015).
- 2 von Appen, A. *et al.* In situ structural analysis of the human nuclear pore complex. *Nature* **526**, 140-143, doi:10.1038/nature15381 (2015).
- 3 Mosalaganti, S. *et al.* In situ architecture of the algal nuclear pore complex. *Nat Commun* **9**, 2361, doi:10.1038/s41467-018-04739-y (2018).

- 4 Kim, S. J. *et al.* Integrative structure and functional anatomy of a nuclear pore complex. *Nature* **555**, 475-482, doi:10.1038/nature26003 (2018).