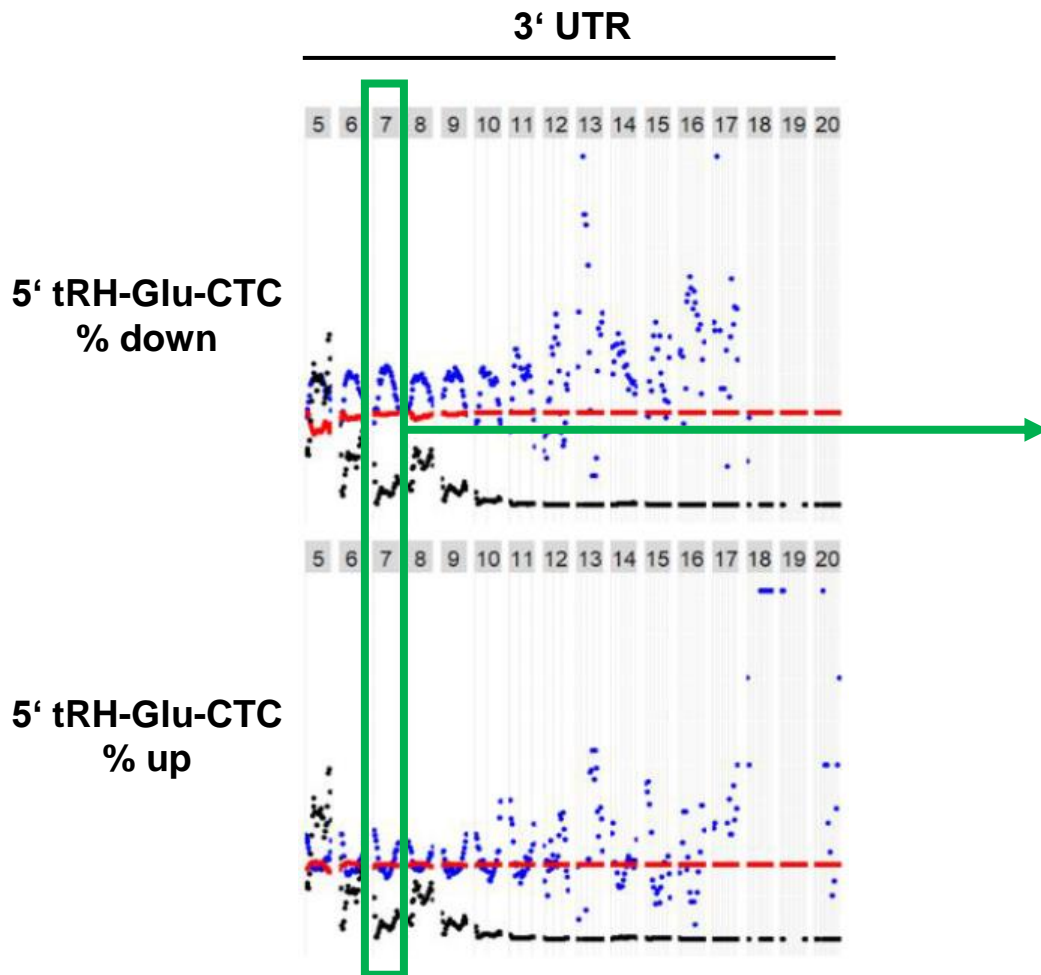
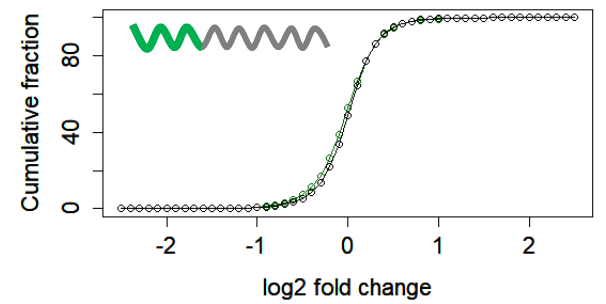
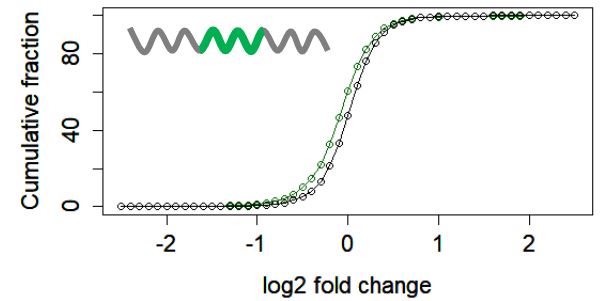
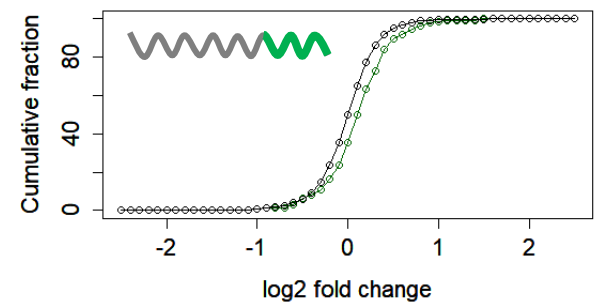
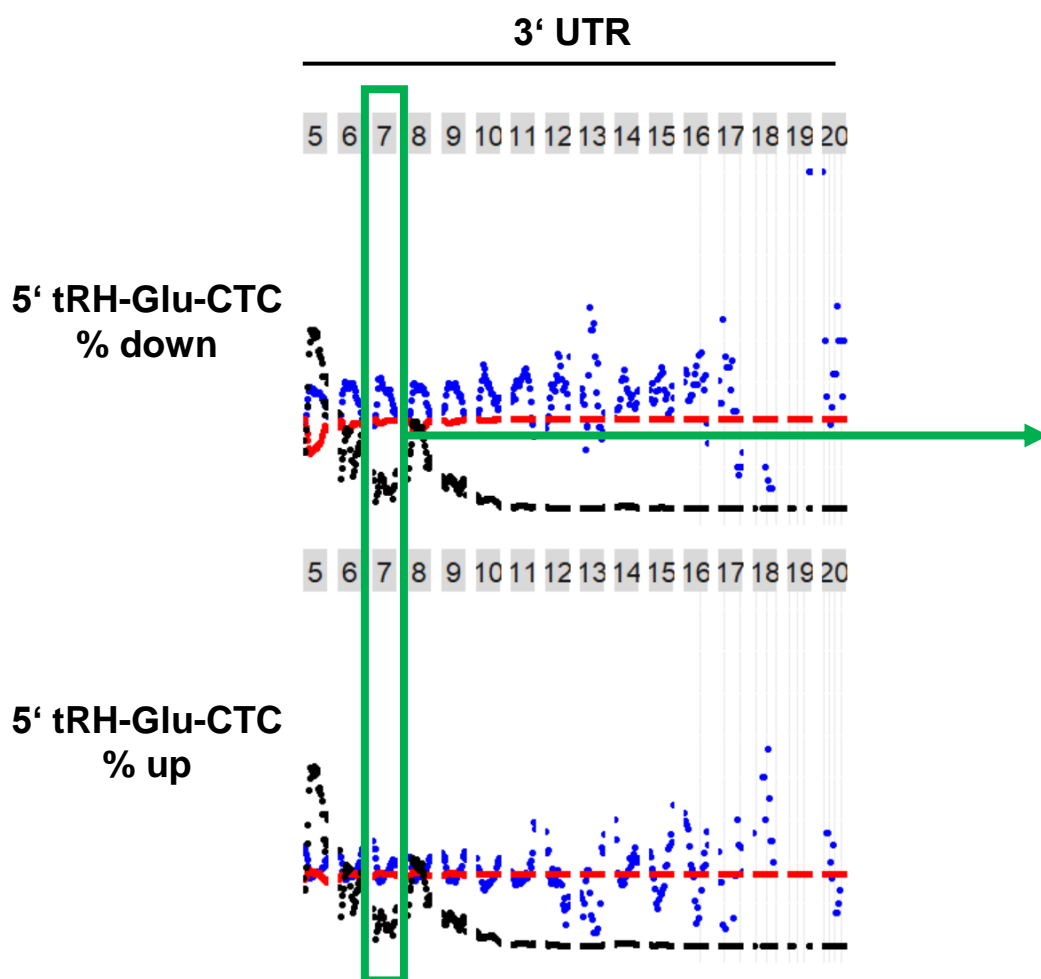
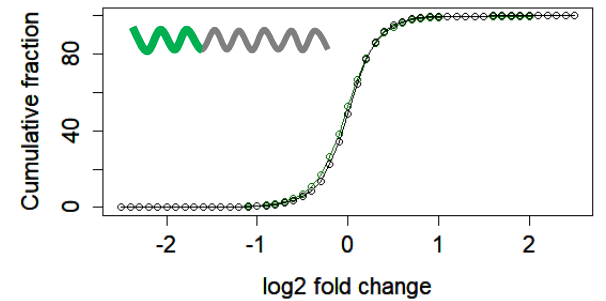
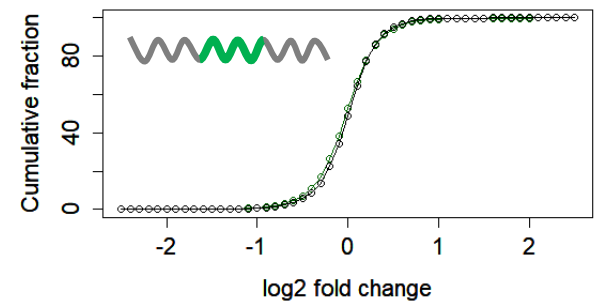
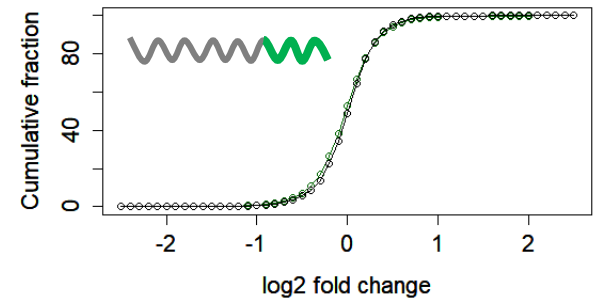


A**original k-mers****A.1** 7mers from the 5'end of tRH targeting 3'UTR**A.2** 7mers from the middle of tRH targeting 3'UTR**A.3** 7mers from the 3'end of tRH targeting 3'UTR**B****random shuffled k-mers****B.1** 7mers from the 5'end of tRH targeting 3'UTR**B.2** 7mers from the middle of tRH targeting 3'UTR**B.3** 7mers from the 3'end of tRH targeting 3'UTR

Supplemental_Fig_S5: Control of k-mer analysis. Target pattern analysis with **(A)** original k-mers of 5' tRH-Glu-CTC and **(B)** random shuffled k-mers that were mapped to the 3' UTR of the human transcriptome with cumulative fraction plots of genes that have target sites for the respective 7-mers (green).