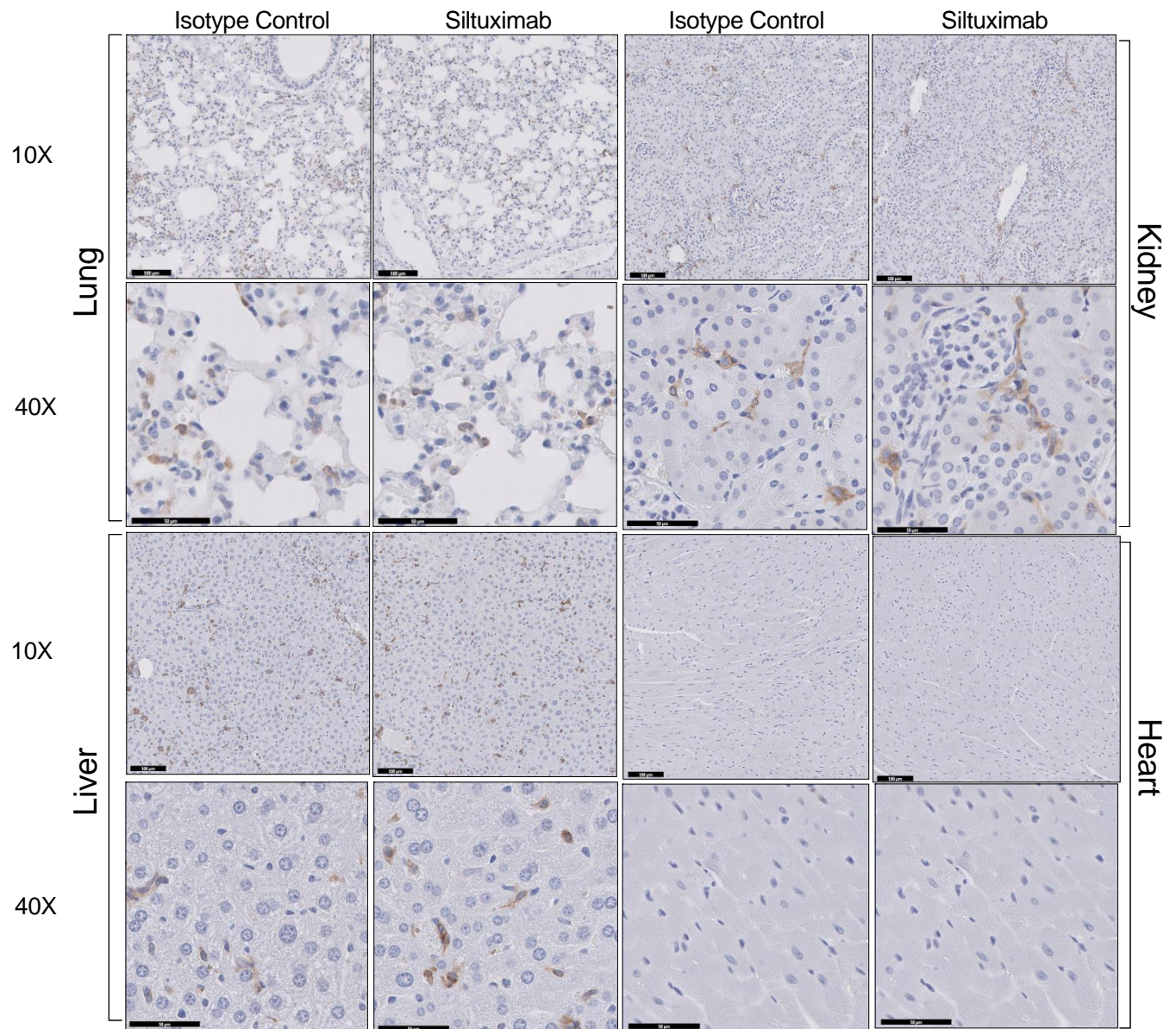


Figure S20



Siltuximab treatment does not decrease leukemic burden in various organs of NSG^{spln}- mice engrafted with human AML. Representative IHC stain of human CD45 (brown) in the lung, kidney, liver, and heart to evaluate organ infiltration by human AML in NSG^{spln}-PDX (SU540) mice treated with isotype control (n=5) or siltuximab (n=5) as described. Scale bars represent 100µm (10x top panel) and 50 µm (40x bottom panel).