

**ONLINE RESEARCH 27.04.2020**  
**Carla Mastrorilli**

**Methods**

1. Search on PUBMED

- a) COVID-19 AND model (247 items)
- b) COVID-19 AND hypothesis (30 items)
- c) COVID-19 AND theory (19 items)
- d) COVID-19 AND model AND immunological (2 items)
- e) COVID-19 AND hypothesis AND immunological (1 item)
- f) COVID-19 AND theory AND immunological (0 items)
- g) COVID-19 AND model AND immunology (11 items)
- h) E) COVID-19 AND hypothesis AND immunology (3 items)
- i) F) COVID-19 AND theory AND immunology (0 items)

**History**

[Download history](#) [Clear history](#)

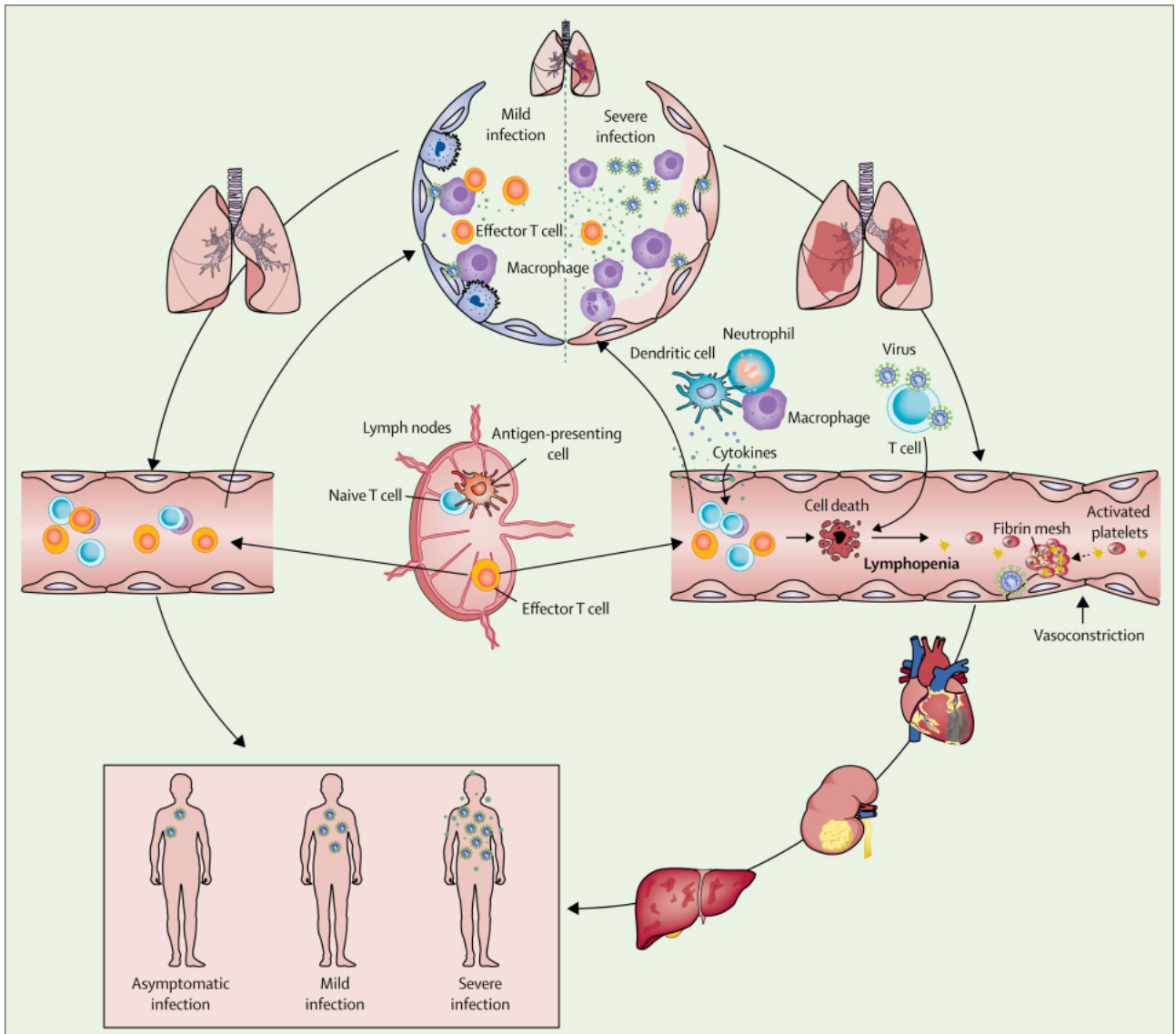
Search	Add to builder	Query	Items found	Time
<a href="#">#56</a>	<a href="#">Add</a>	Search (COVID-19) AND hypothesis AND immunological	<a href="#">1</a>	13:59:47
<a href="#">#54</a>	<a href="#">Add</a>	Search (COVID-19) AND hypothesis AND immunology	<a href="#">3</a>	13:57:42
<a href="#">#52</a>	<a href="#">Add</a>	Search (COVID-19) AND model AND immunology	<a href="#">11</a>	13:55:12
<a href="#">#50</a>	<a href="#">Add</a>	Search (COVID-19) AND model AND immunological	<a href="#">2</a>	13:54:49
<a href="#">#49</a>	<a href="#">Add</a>	Search (COVID-19) AND theory AND immunological Schema: all	<a href="#">0</a>	13:54:33
<a href="#">#48</a>	<a href="#">Add</a>	Search (COVID-19) AND theory AND immunological	<a href="#">0</a>	13:54:33
<a href="#">#47</a>	<a href="#">Add</a>	Search (COVID-19) AND theory AND immunology Schema: all	<a href="#">0</a>	13:53:51
<a href="#">#46</a>	<a href="#">Add</a>	Search (COVID-19) AND theory AND immunology	<a href="#">0</a>	13:53:51
<a href="#">#45</a>	<a href="#">Add</a>	Search (COVID-19) AND theory	<a href="#">19</a>	13:52:07
<a href="#">#44</a>	<a href="#">Add</a>	Search (COVID-19) AND hypothesis	<a href="#">30</a>	13:51:35
<a href="#">#43</a>	<a href="#">Add</a>	Search (COVID-19) AND model	<a href="#">247</a>	13:49:35
<a href="#">#41</a>	<a href="#">Add</a>	Search COVID-19	<a href="#">7106</a>	13:49:21
<a href="#">#27</a>	<a href="#">Add</a>	Search (hypothesis) AND COVID-19	<a href="#">30</a>	12:52:55
<a href="#">#19</a>	<a href="#">Add</a>	Search (model) AND COVID-19	<a href="#">247</a>	12:46:38
<a href="#">#20</a>	<a href="#">Add</a>	Search (Theory) AND COVID-19	<a href="#">19</a>	12:40:39
<a href="#">#5</a>	<a href="#">Add</a>	Search model COVID-19	<a href="#">247</a>	12:26:06

2. Google images

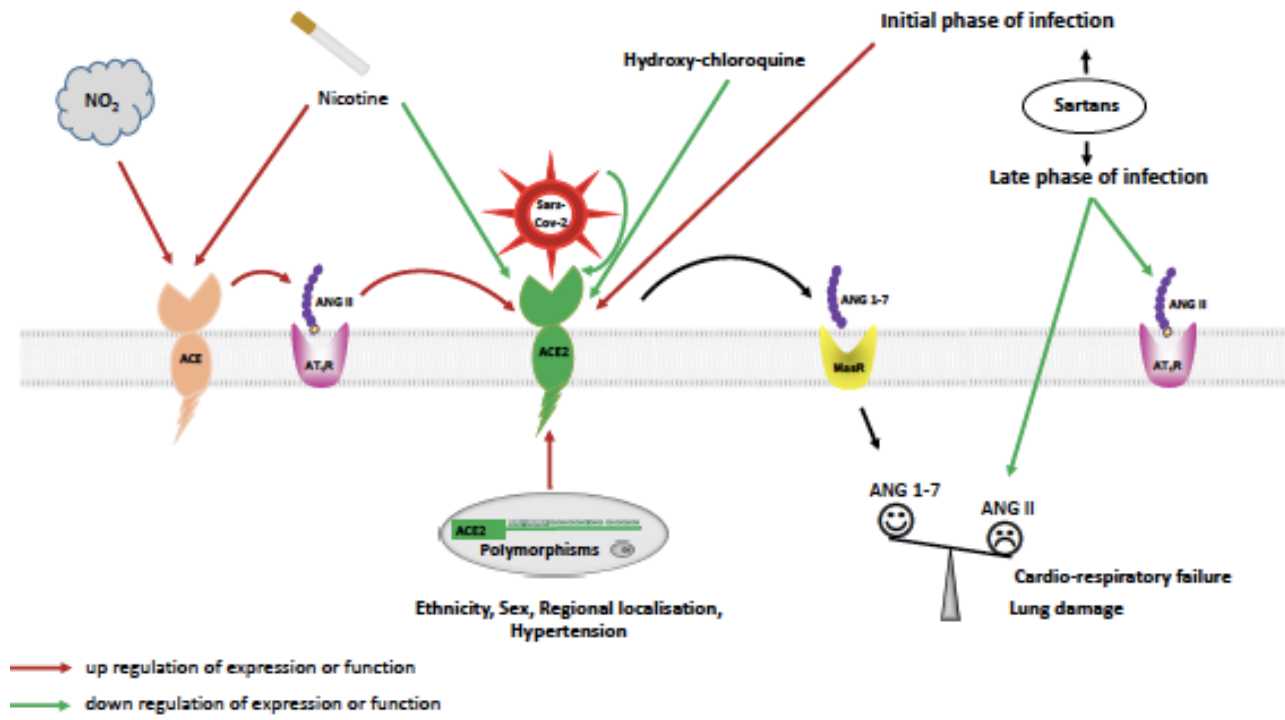
**Results**

I could not find any immunological model on COVID-19. There are only prevision or diagnostic models. Few articles indicate an association between the infection and meteorological factors. Several articles focus on hypothetical pathogenesis and the role of Angiotensin converting enzyme.

Li et al. SARS-CoV-2 and viral sepsis: observations and hypotheses. *Lancet* 2020.  
[https://doi.org/10.1016/S0140-6736\(20\)30920-X](https://doi.org/10.1016/S0140-6736(20)30920-X)



Alifano M et al. Renin-angiotensin system at the heart of COVID-19 pandemic, *Biochimie* 2020. doi:<https://doi.org/10.1016/j.biochi.2020.04.008>.



Misra et al. Rheumatologists' perspective on coronavirus disease 19 (COVID-19) and potential therapeutic targets. *Clinical Rheumatology* 2020. <https://doi.org/10.1007/s10067-020-05073-9>.

