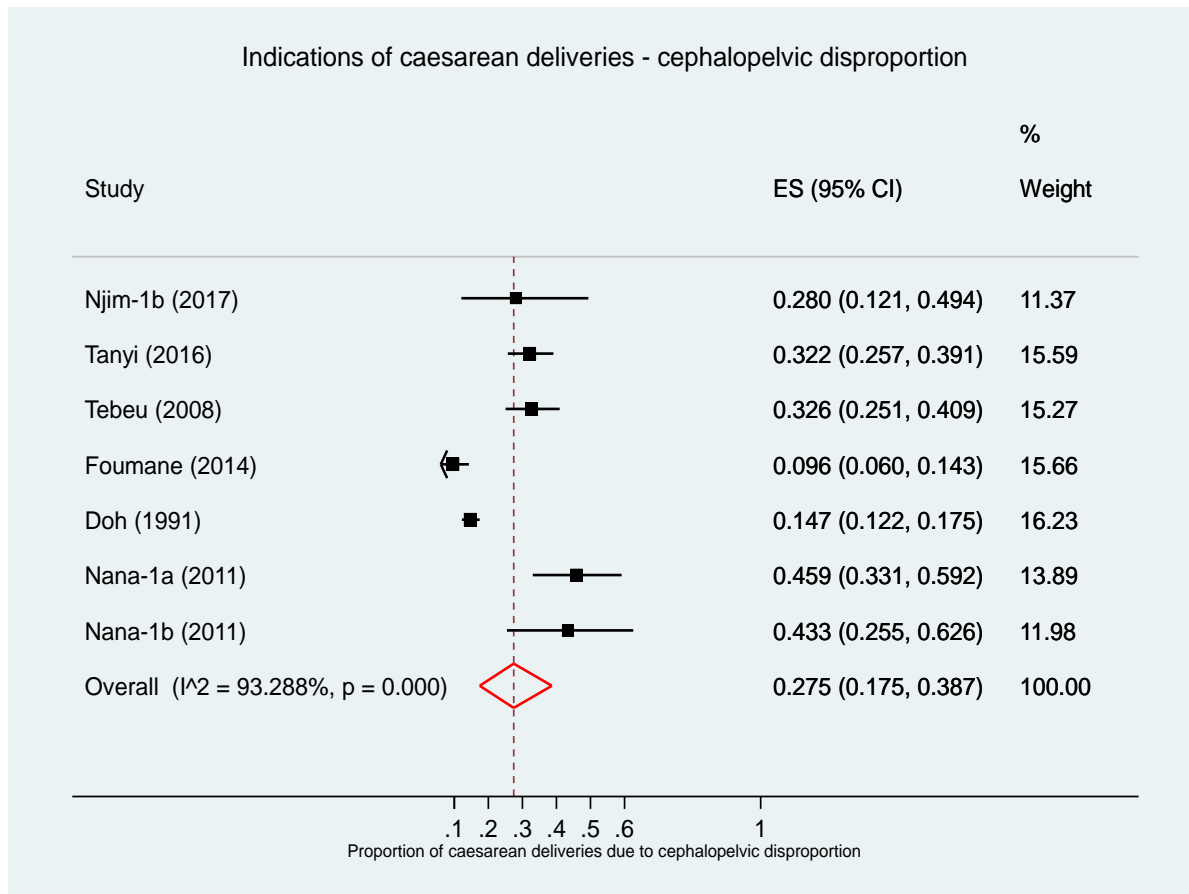
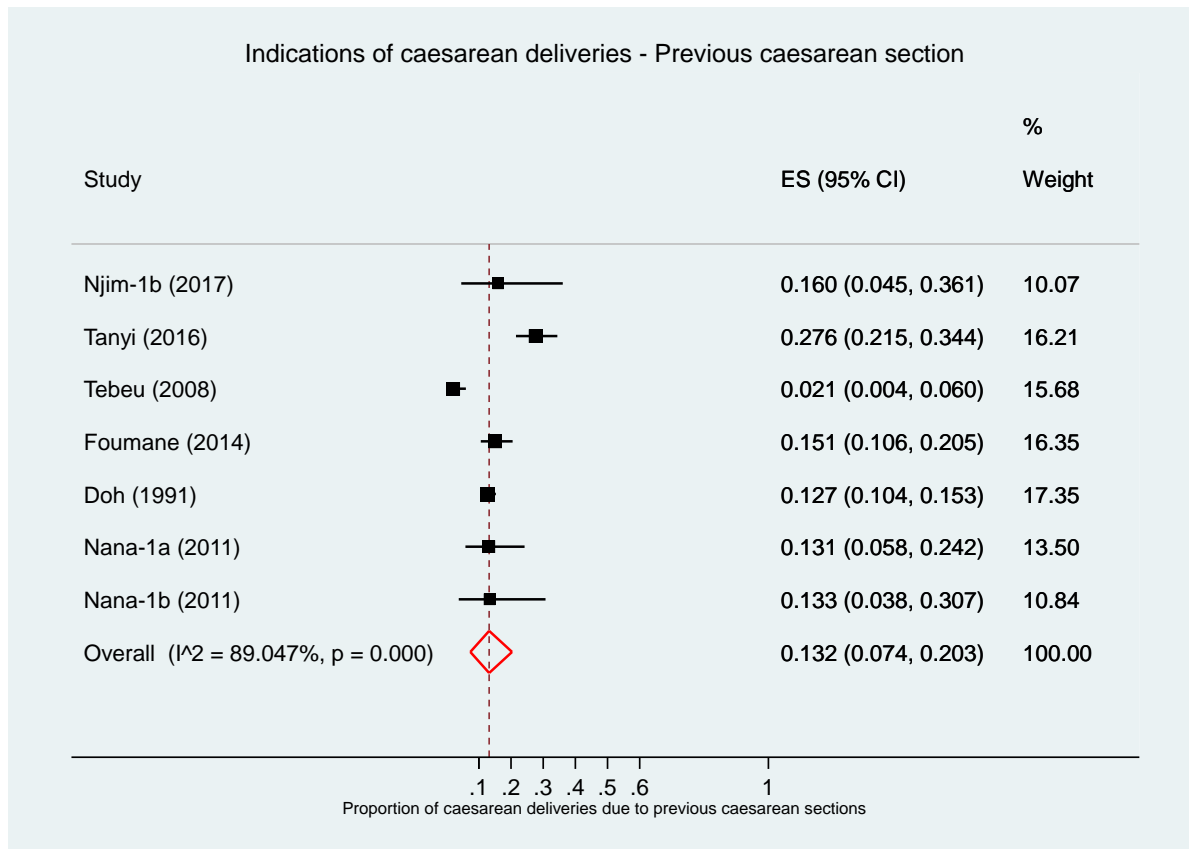


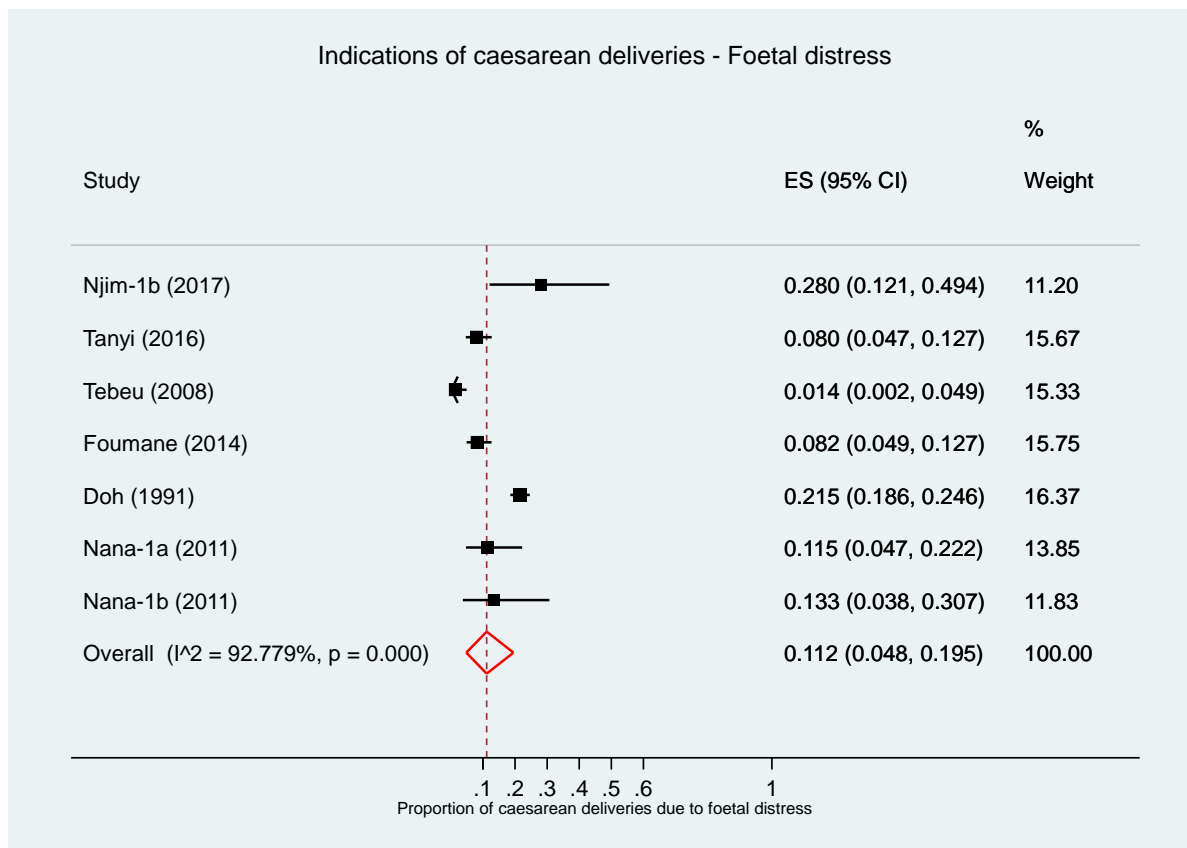
### Meta-analysis showing the proportion of caesarean deliveries due to cephalopelvic disproportions



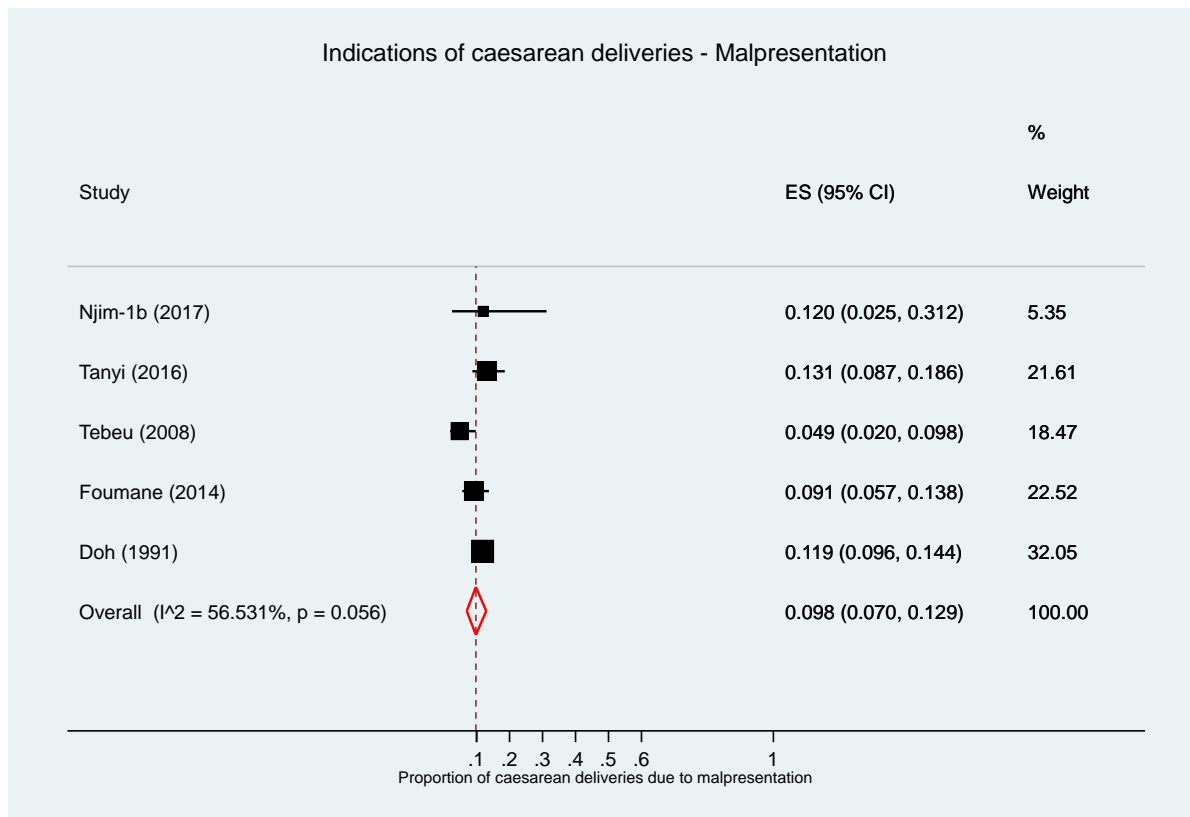
**Meta-analysis showing the proportion of caesarean deliveries due to a previous caesarean section**



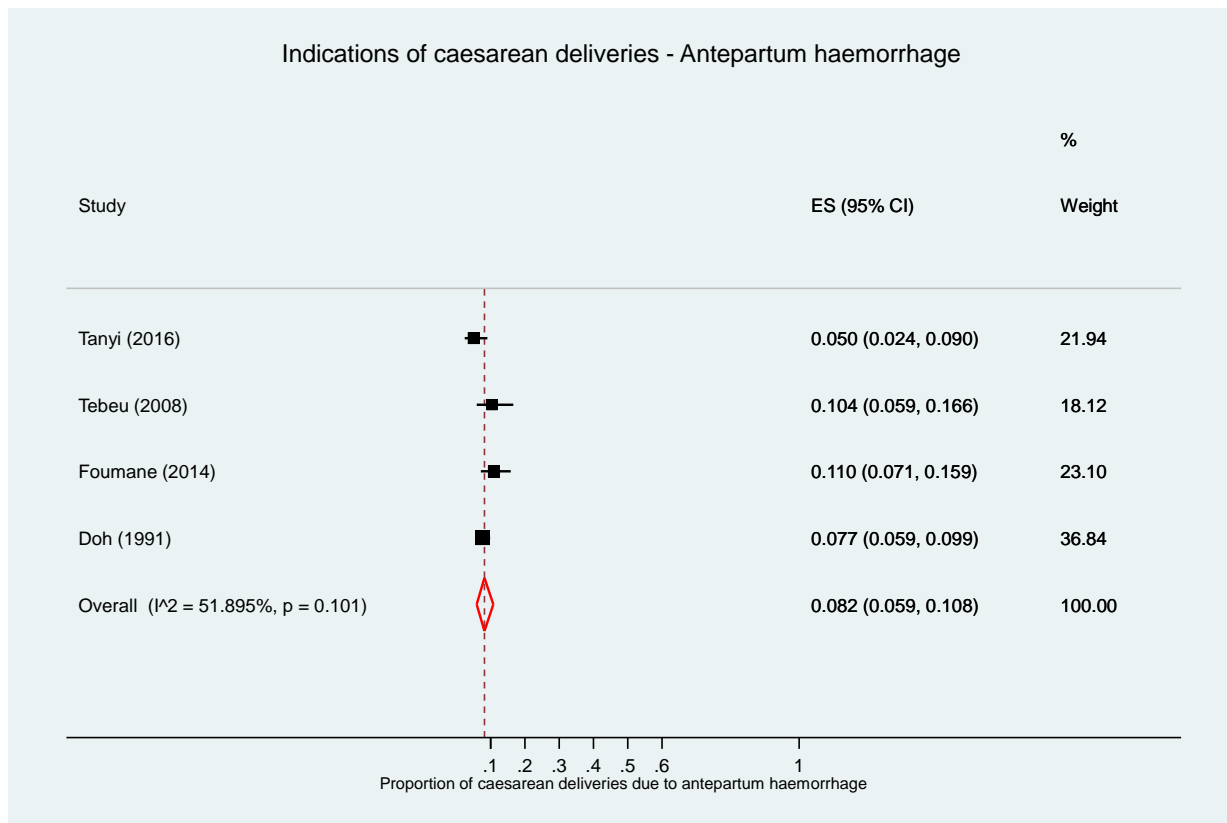
## Meta-analysis showing the proportion of caesarean deliveries due to foetal distress



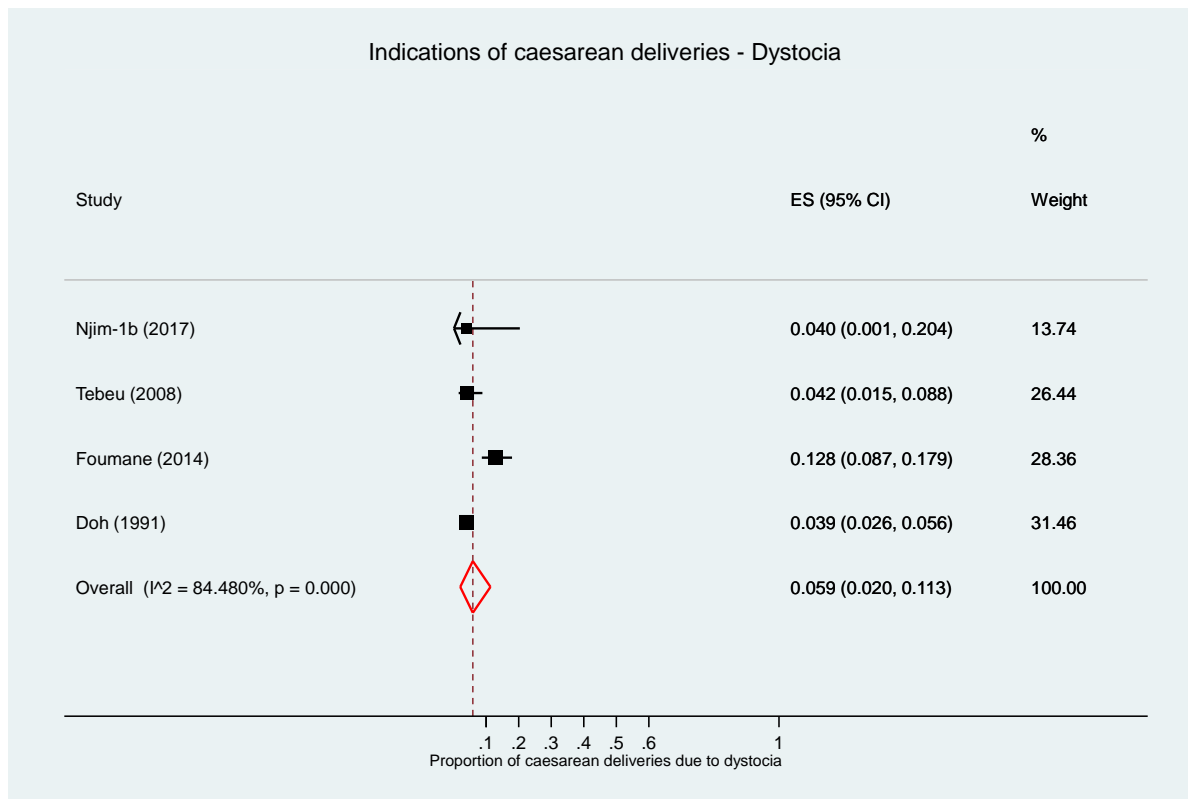
## Meta-analysis showing the proportion of caesarean deliveries due to malpresentation



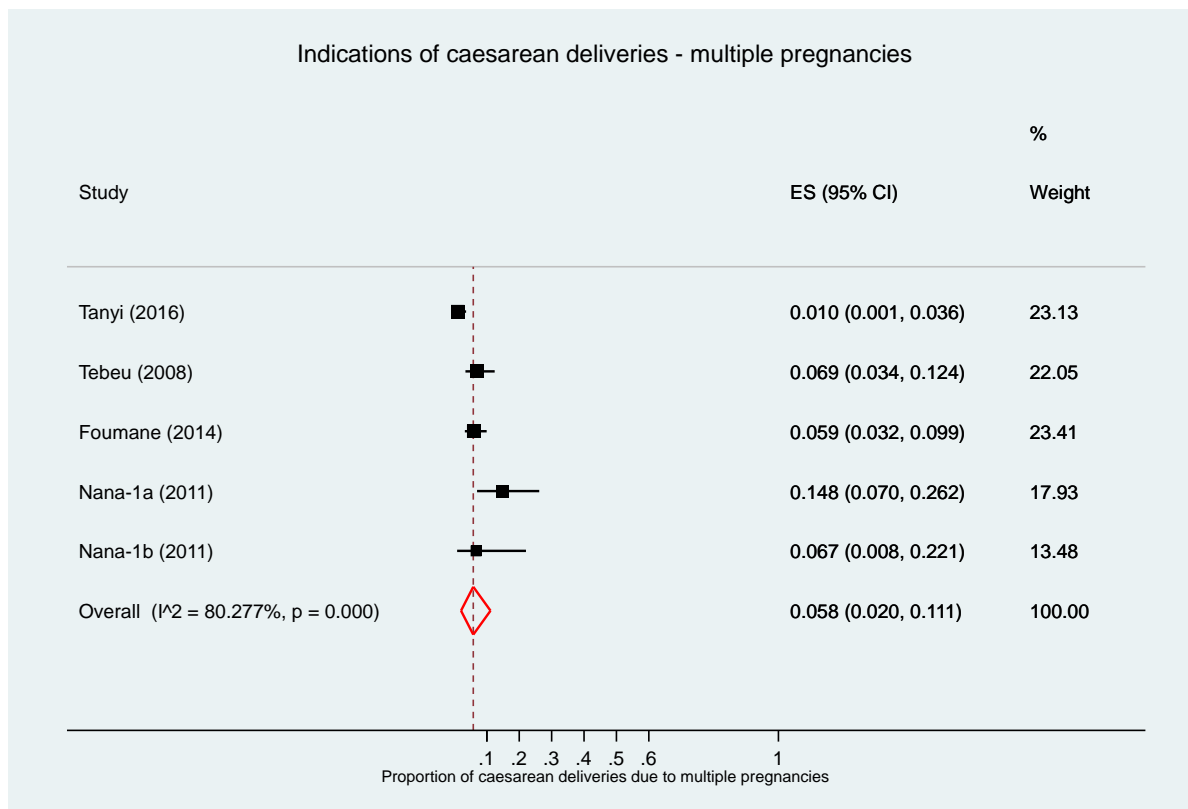
## Meta-analysis showing the proportion of caesarean deliveries due to antepartum haemorrhage



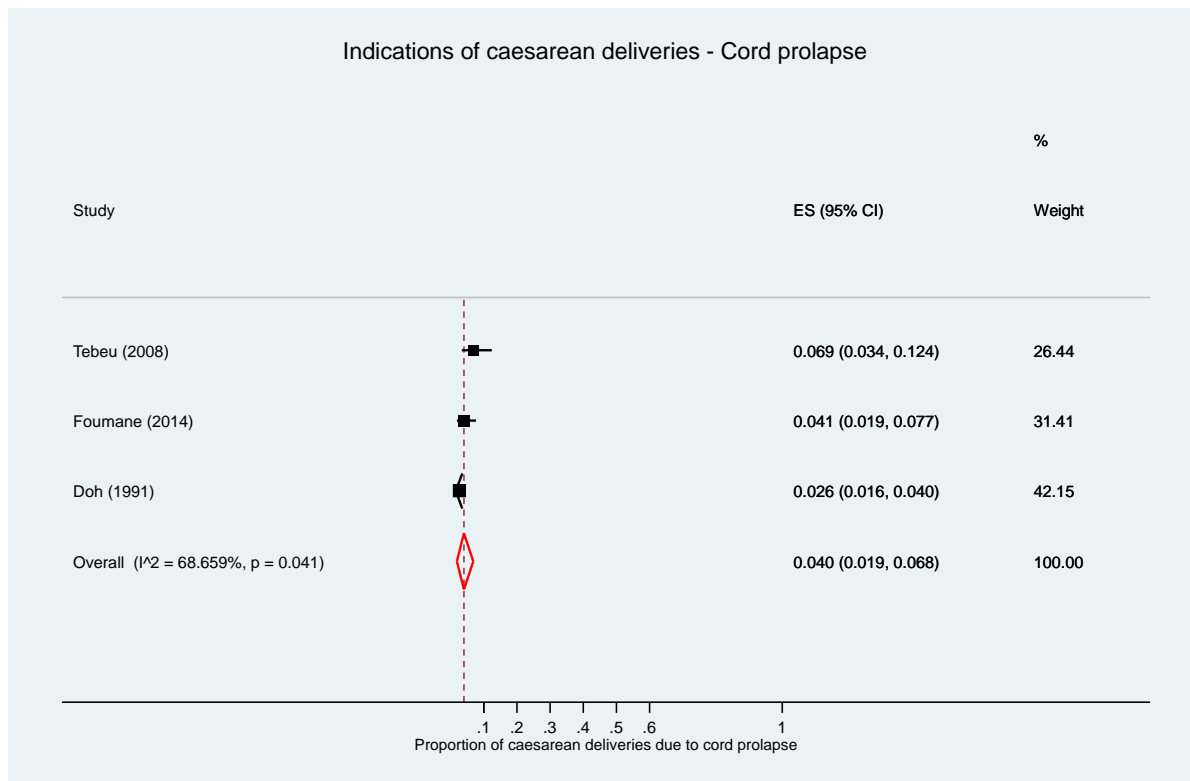
## Meta-analysis showing the proportion of caesarean deliveries due to dystocia



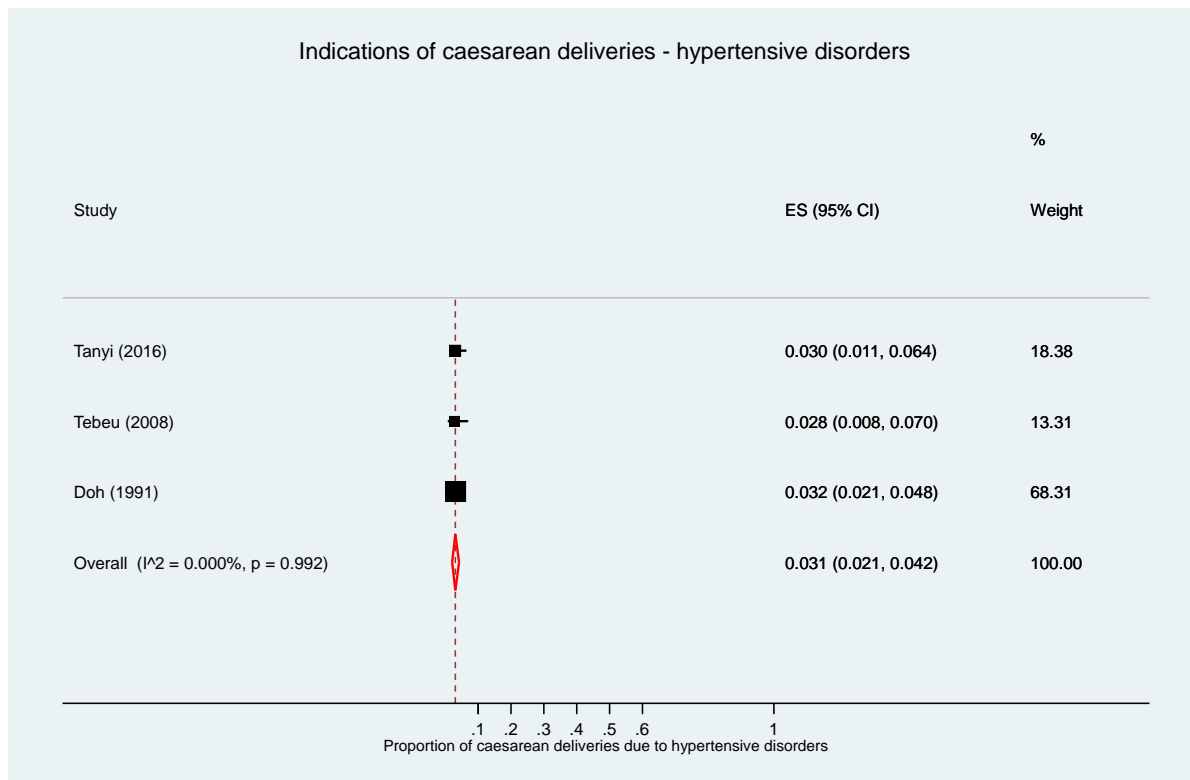
## Meta-analysis showing the proportion of caesarean deliveries due to multiple pregnancies



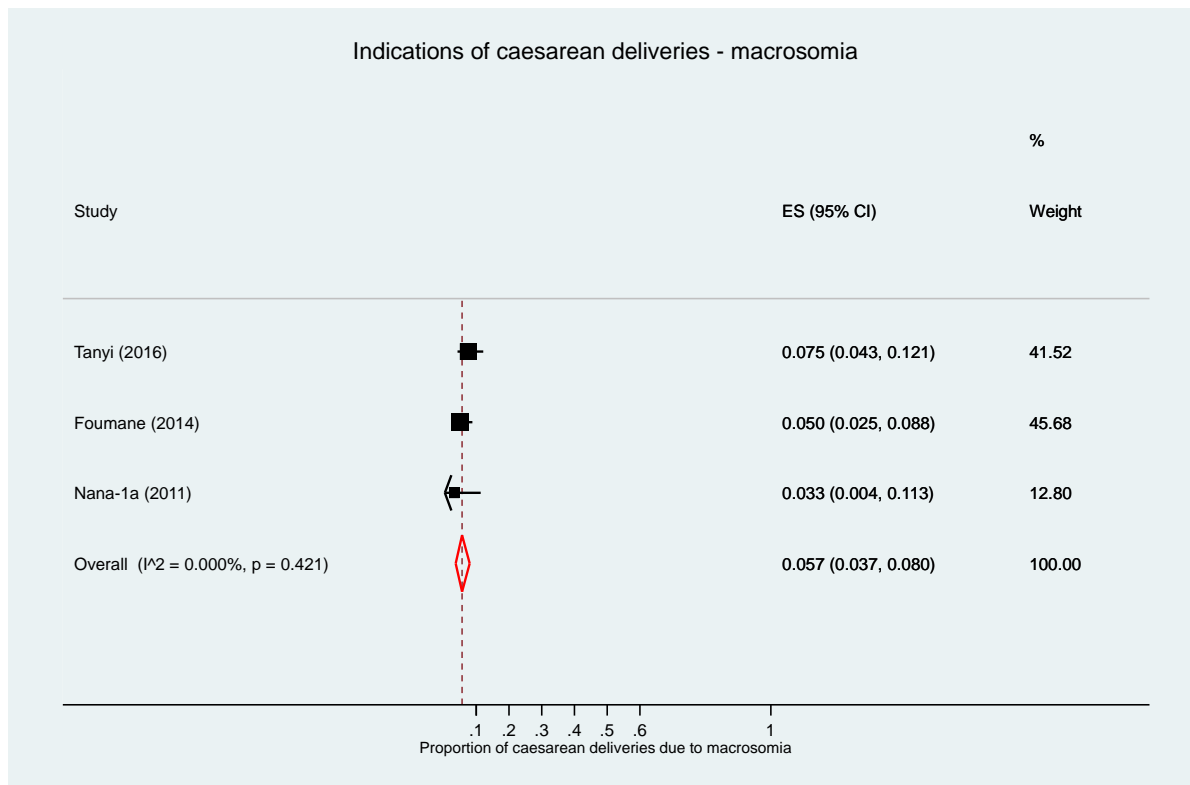
### Meta-analysis showing the proportion of caesarean deliveries due to cord prolapse



### Meta-analysis showing the proportion of caesarean deliveries due to hypertensive disorders in pregnancy



### Meta-analysis showing the proportion of caesarean deliveries due to macrosomia



### Meta-analysis showing the proportion of caesarean deliveries due to uterine rupture

