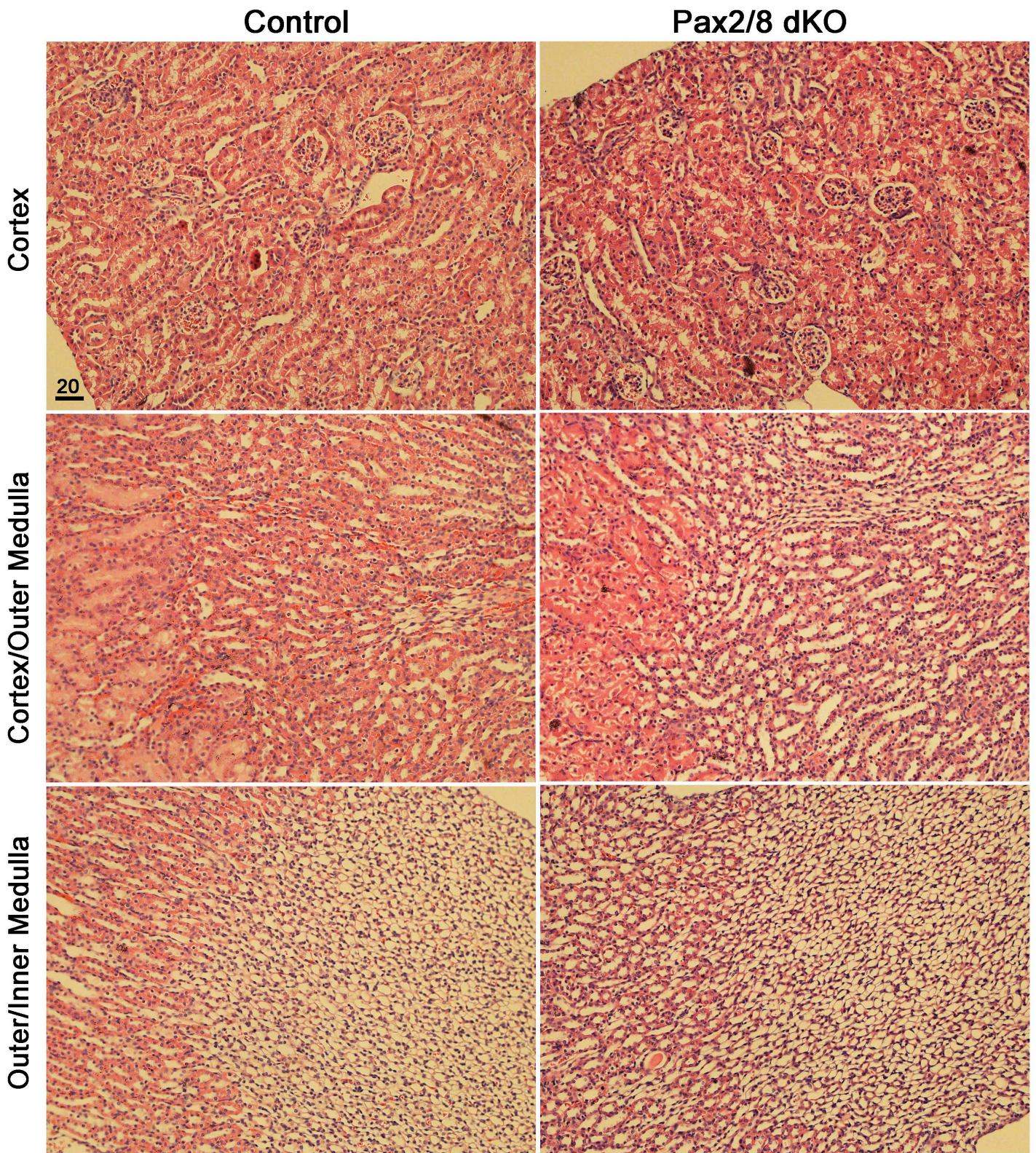


Supplemental Table of Contents

Figure S1A. Histological sections from Control and Pax2/8 dKOs.	2
Figure S1B. Higher magnifications of histological sections from Control and Pax2/8 dKOs	3
Figure S2. Quantitative RT-PCR for selected genes identified by Affymetrix arrays	4
Figure S3. Immunostaining of control and Pax2/8 dKOs with antibodies against AQP1 and 2	5
Figure S4. Immunostaining of control and Pax2/8 dKOs with antibodies against AQP3 and 4	6
Figure S5. Transfection of Pax8 or Pax2 in IMCD cells	7
Table S1. Excel spreadsheet of gene expression changes identified by Affymetrix arrays	
Table S2. Relative expression levels of AVP and receptors	8
Table S3. List of PCR primer pairs	9

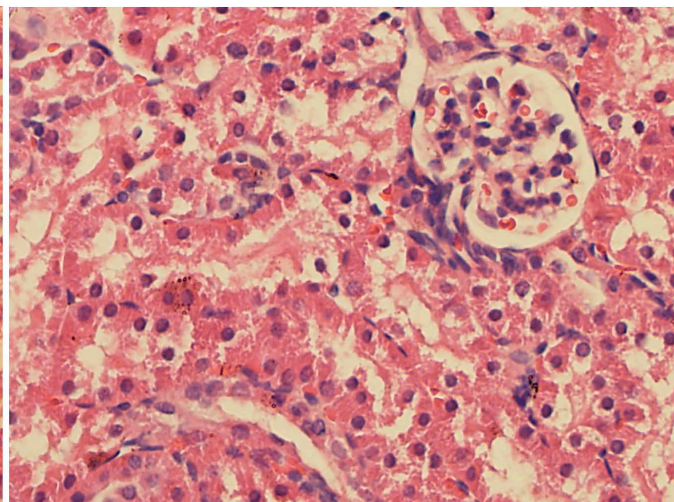
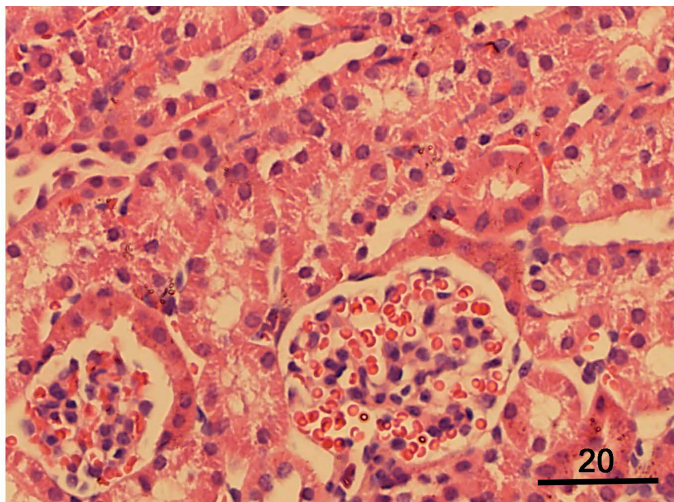


Supplemental Figure S1. A) Histological sections from control and Pax2/8 dKO kidneys taken 2 weeks after last tamoxifen injection. Magnification bar for all panels is 20 μ m. Staining is by hematoxylin and eosin.

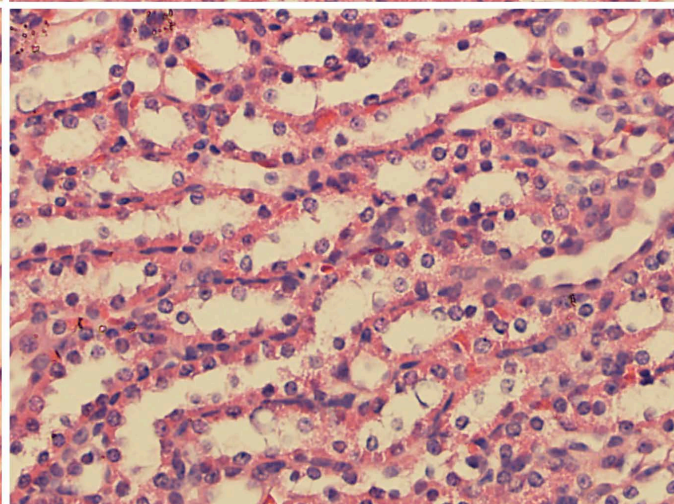
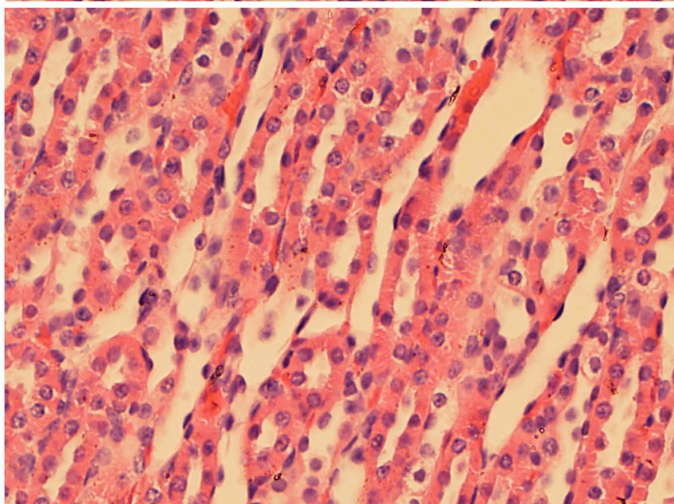
Control

Pax2/8 dKO

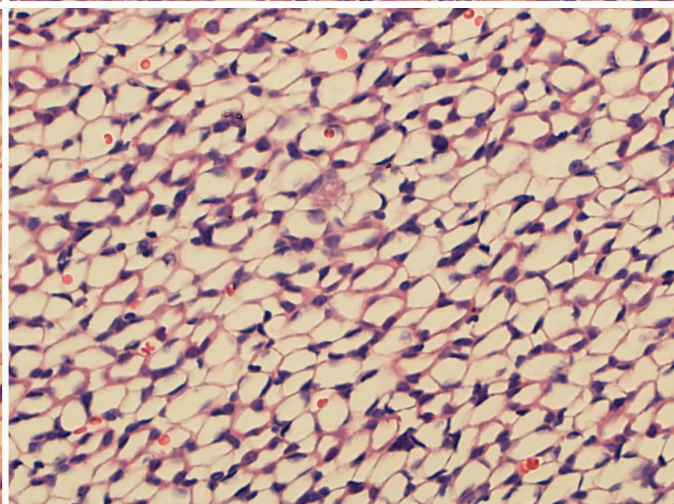
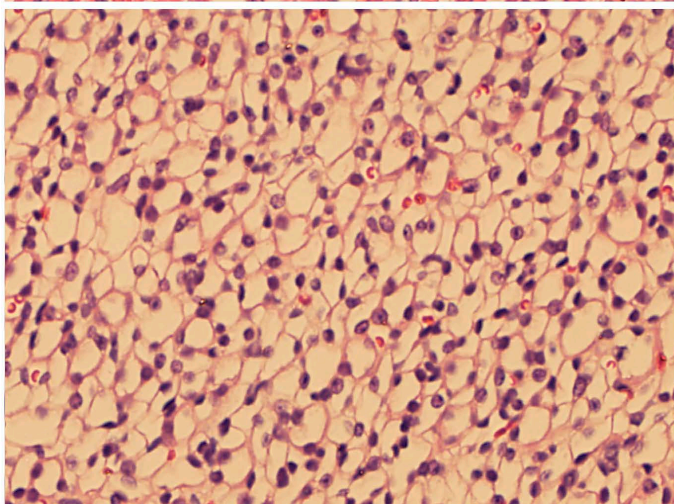
Cortex



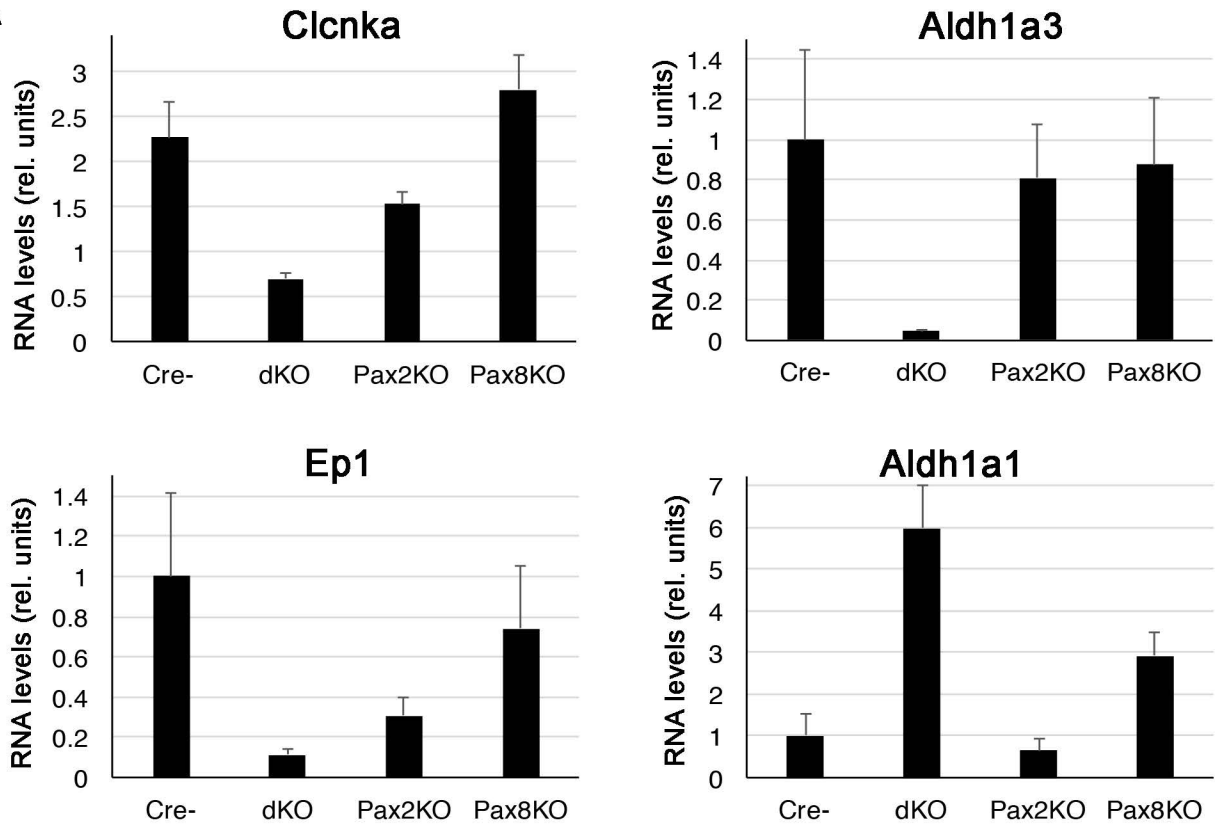
Outer Medulla



Inner Medulla

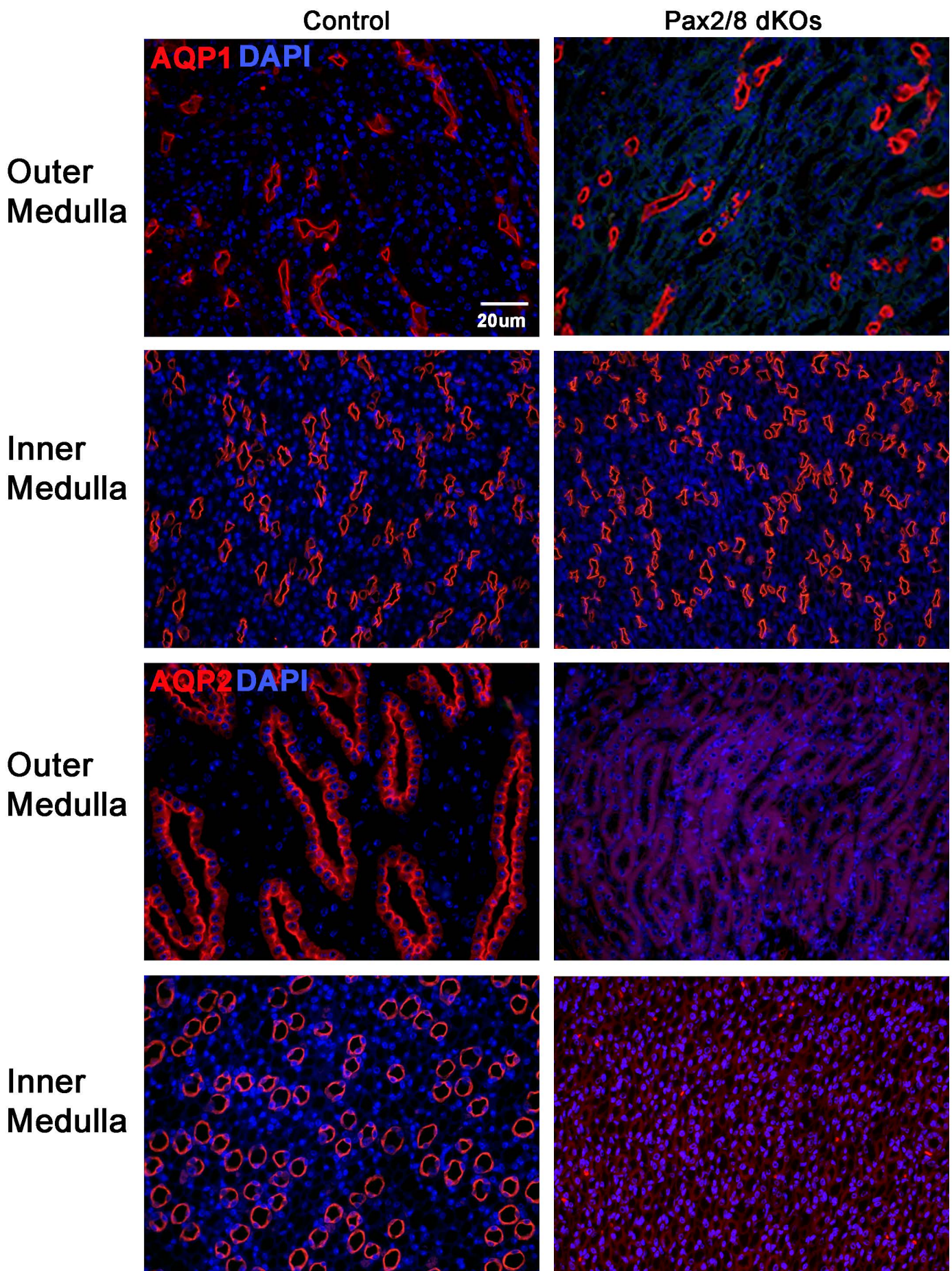


Supplemental Figure S1. B) Higher magnifications of sections from control and Pax2/8 dKO kidneys taken 2 weeks after last tamoxifen injection. Magnification bar for all panels is 20 μm . Staining is by hematoxylin and eosin.

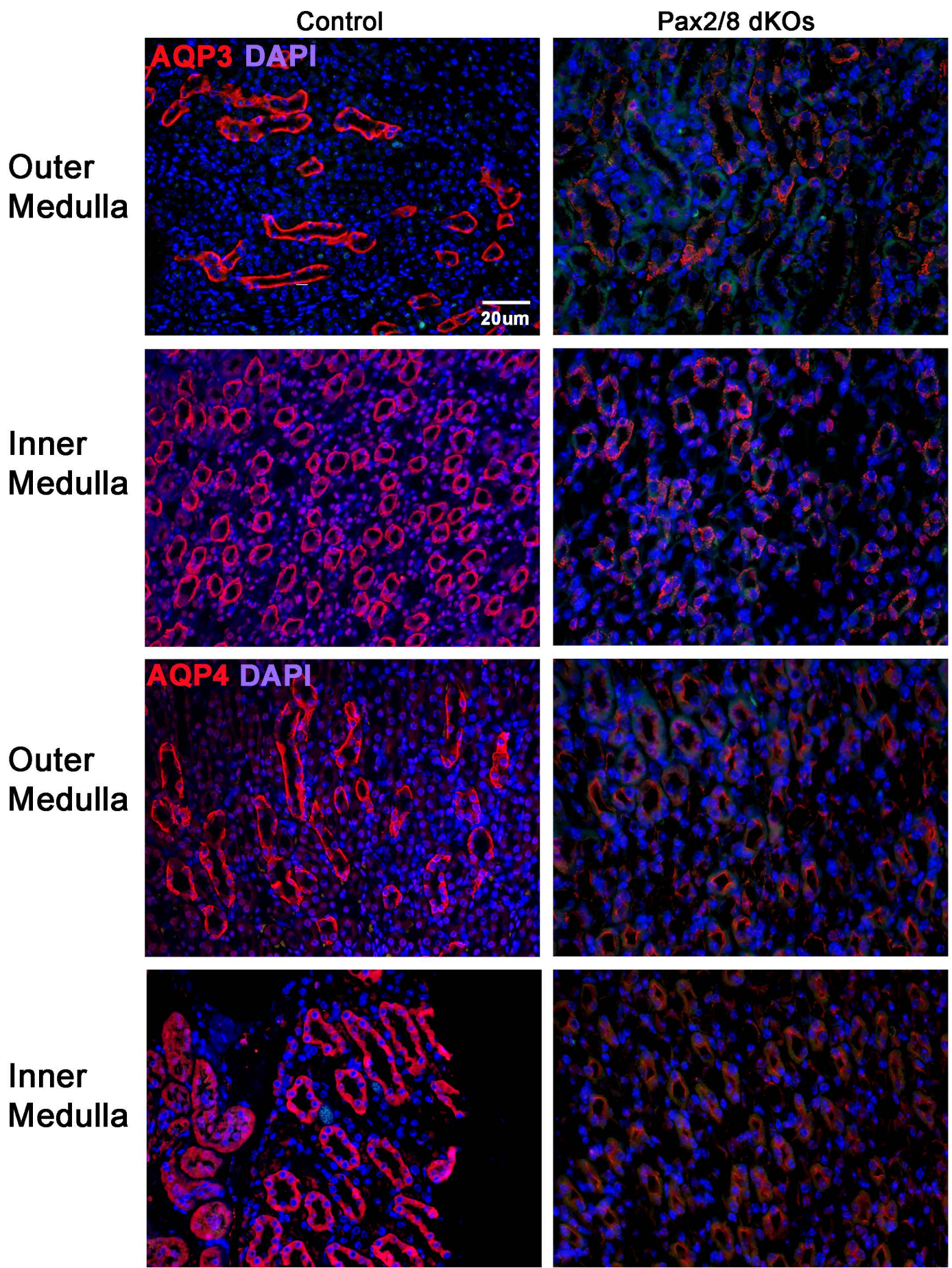
A**B**

	Fold Change in Pax2/8 dKOs			
	Clcnka	Aldh1a3	Ep1	Aldha1
Affymetrix	-3.4	-7.4	-4.8	+4.1
qRT-PCR	-3.7	-19.2	-9.1	+6.0

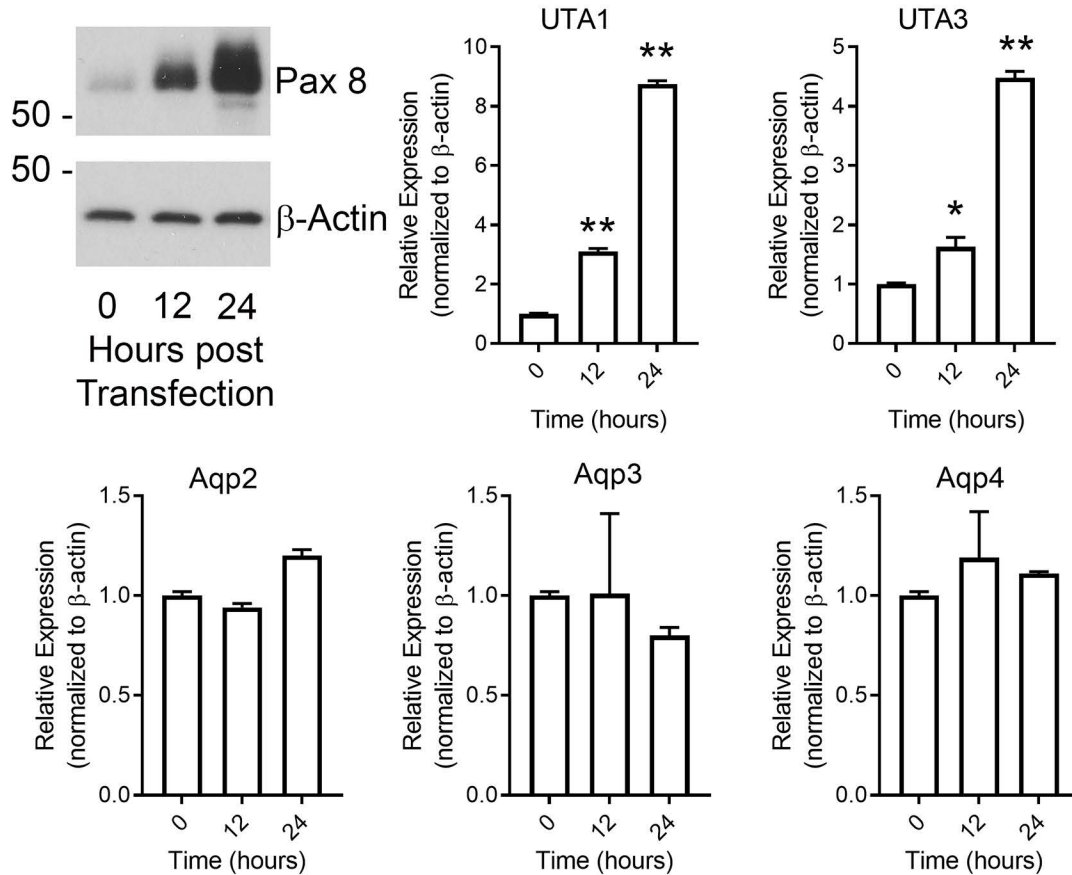
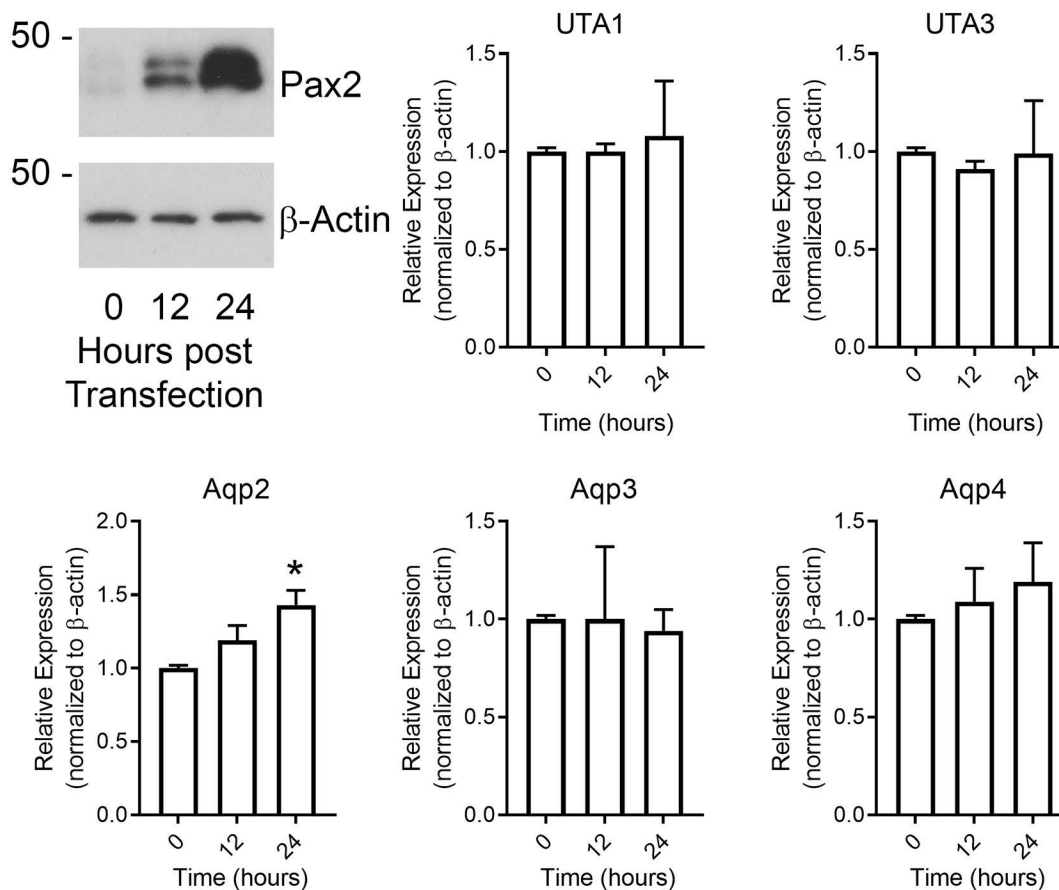
Supplemental Figure S2. A) Quantitative RT-PCR for selected genes identified by Affymetrix arrays as significantly altered in Pax2/8 dKOs. Controls are Cre- and single and double KOs are shown. B) Comparison of fold change detected by qRT-PCR and Affymetrix arrays.



Supplemental Figure S3. Immunostaining of control and Pax2/8 dKO kidney sections stained with antibodies against Aqp1 (red) or Aqp2 (red) as indicated. Kidneys are 2 weeks post tamoxifen and nuclei are stained with Dapi (blue).



Supplemental Figure S4. Immunostaining of control and Pax2/8 dKO kidney sections stained with antibodies against Aqp3 (red) or Aqp4 (red) as indicated. Kidneys are 2 weeks post tamoxifen and nuclei are stained with Dapi (blue).

A**B**

Supplemental Figure S5. A) Transfection of Pax8 into mIMCD cells and qRT-PCR analyses for the indicated transcripts are shown before (0) or 12 or 24 hours post transfection. B) Similar experiments as in A but using Pax2 expression vectors. All transfections and qRT-PCRs were done in triplicate (p < .01, *p < .05).**