

Table S1.^a Isolates included in this study

isolate	PubMLST		geographic origin			year isolated	clinical status of source animal	ST using the scheme indicated			acc# (GenBank assembly) or depth	
	ID#	host	country	region	anatomic origin			PubMLST	Weybridge	revised PubMLST	of coverage (private assembly)	animal
PG45	96	bovine	United States	Connecticut	milk	1961	mastitis	17	1	12	CP002188.1	1
2497MB	216	bovine	United States	California	nasal cavity	2011	unknown	NT2	12	15	LQED01	2
2887MB	217	bovine	United States	California	nasal cavity	2011	unknown	NT2	12	15	LQEY01	3
2930MB	327	bovine	United States	California	nasal cavity	2011	unknown	NT2	12	15	LQFC01	4
2133MB	328	bovine	United States	California	nasal cavity	2011	unknown	NT2	12	15	LQDA01	5
2154MB	329	bovine	United States	California	nasal cavity	2011	unknown	NT2	12	15	LQDB01	6
2255MB	330	bovine	United States	California	nasal cavity	2011	unknown	NT2	12	15	LQDH01	7
2223MB	331	bovine	United States	California	nasal cavity	2011	unknown	NT2	12	15	LQDG01	8
2320MB	332	bovine	United States	California	nasal cavity	2011	unknown	NT2	12	15	LQDP01	9
2297MB	333	bovine	United States	California	nasal cavity	2011	unknown	NT2	12	15	LQDJ01	10
2335MB	334	bovine	United States	California	nasal cavity	2011	unknown	NT2	12	15	LQDR01	11
2351MB	335	bovine	United States	California	nasal cavity	2011	unknown	51	7	14	LQDT01	12
2377MB	336	bovine	United States	California	nasal cavity	2011	unknown	NT2	12	15	LQDU01	13
2389MB	337	bovine	United States	California	nasal cavity	2011	unknown	NT2	12	15	LQDV01	14
2403MB	338	bovine	United States	California	nasal cavity	2011	unknown	NT2	12	15	LQDX01	15
2512MB	339	bovine	United States	California	nasal cavity	2011	unknown	NT4	7	14	LQEF01	16
2612MB	340	bovine	United States	California	nasal cavity	2011	unknown	NT2	12	15	LQEO01	17
2769MB	341	bovine	United States	California	nasal cavity	2011	unknown	NT2	12	15	LQEW01	18
3308MB	342	bovine	United States	California	nasal cavity	2011	unknown	NT2	12	15	LQFU01	19
2307MB	343	bovine	United States	California	nasal cavity	2011	unknown	NT2	12	15	LQDM01	20
2969MB	344	bovine	United States	California	nasal cavity	2011	unknown	NT4	7	14	LQFF01	21
KRB2	382	bovine	United States	Kansas	lung	2014	pneumonia	47	6	25		22
KRB3	303	bovine	United States	Kansas	lung	2014	pneumonia	3	6	23	134	23
KRB5	215	bovine	United States	Kansas	lung	2014	pneumonia	47	6	25	268	24
KRB6	218	bovine	United States	Kansas	lung	2014	pneumonia	48	26	55	294	25
KRB7	387	bovine	United States	Kansas	lung	2014	pneumonia	3	6	23	260	26
KRB9	301	bovine	United States	Iowa	lung	2012	pneumonia	3	5	23	267	27
KRB10	302	bovine	United States	Iowa	lung	2012	pneumonia	3	5	23	288	28
KRB11	30	bovine	United States	Texas	nasal cavity	2011	pneumonia	30	10	27	320	29
KRB13	1096	bovine	United States	Iowa	nasal cavity	2017	healthy	46	56	69	120	30
Cs432	23	bovine	United States	Iowa	lung	1995	pneumonia, arthritis	23	19	9	131	31
236-21	699	bovine	United States	Washington	milk	2008	mastitis	NT1	8	21	WFFY00000000	32
236-22	700	bovine	United States	Washington	milk	2008	mastitis	10	25	52	WFFZ00000000	33
236-27	701	bovine	United States	Washington	milk	2008	mastitis	10	25	52	WFGA00000000	34
236-28	702	bovine	United States	Washington	milk	2008	mastitis	150	69	52	WFGB00000000	35
236-38	703	bovine	United States	Washington	milk	2008	mastitis	30	13	27	WFGC00000000	36
236-47	704	bovine	United States	Washington	milk	2007	mastitis	151	70	63	WFGD00000000	37
236-48	705	bovine	United States	Washington	milk	2007	mastitis	10	25	52	WFG00000000	38
237-4	706	bovine	United States	Washington	milk	2006	mastitis	10	25	52	WFGF00000000	39
237-7	707	bovine	United States	Washington	milk	2007	mastitis	152	71	3	WFGG00000000	40
237-8	708	bovine	United States	Washington	milk	2007	mastitis	5	8	21	WFGH00000000	41
237-9	709	bovine	United States	Washington	milk	2007	mastitis	5	8	21	WFGI00000000	42
237-10	710	bovine	United States	Washington	milk	2007	mastitis	5	72	21	WFGJ00000000	43
272-37	711	bovine	United States	Washington	milk	2017	mastitis	NT17	23	66	WFGK00000000	44
272-41	712	bovine	United States	Washington	milk	2017	mastitis	153	36	46	WFL00000000	45
272-43	713	bovine	United States	Washington	milk	2017	mastitis	NT17	23	66	WFGM00000000	46
272-45	714	bovine	United States	Washington	milk	2017	mastitis	NT17	23	66	WFGN00000000	47
272-47	715	bovine	United States	Washington	milk	2017	mastitis	NT17	23	66	WFGO00000000	48
274-7	716	bovine	United States	Washington	milk	2017	mastitis	NT17	23	66	WFGP00000000	49
274-9	717	bovine	United States	Washington	milk	2017	mastitis	NT17	23	66	WFGQ00000000	50
274-15	718	bovine	United States	Washington	milk	2017	mastitis	124	36	45	WFGR00000000	51
MJ11	397	bovine	Canada	Alberta	lung	2015	pneumonia	123	25	65	328	52
MJ12	398	bovine	Canada	Alberta	lung	2015	pneumonia	121	16	42	342	53
MJ13	399	bovine	Canada	Alberta	lung	2015	pneumonia, arthritis	NT3	25	62	158	54
MJ14	400	bovine	Canada	Alberta	lung	2015	pneumonia	123	25	65	175	55
MJ15	401	bovine	Canada	Alberta	lung	2015	pneumonia	108	25	70	145	56
MJ16	402	bovine	Canada	Alberta	lung	2015	pneumonia	121	16	42	197	57
MJ17	403	bovine	Canada	Alberta	lung	2015	pneumonia	121	16	42	65	58
MJ18	404	bovine	Canada	Alberta	lung	2015	pneumonia	122	35	80	141	59
MJ19	405	bovine	Canada	Alberta	lung	2015	pneumonia	108	25	70	96	60
MJ21	407	bovine	Canada	Alberta	lung	2015	pneumonia	121	16	42	166	61
MJ22	408	bovine	Canada	Alberta	lung	2015	pneumonia	123	25	65	125	62
MJ23	409	bovine	Canada	Alberta	lung	2015	pneumonia	121	18	42	176	63
MJ24	410	bovine	Canada	Alberta	lung	2015	pneumonia	10	25	52	164	64
MJ26	412	bovine	Canada	Alberta	joint	2016	pneumonia, arthritis	109	22	71	95	65
MJ294	506	bovine	Canada	Alberta	lung	2016	pneumonia, arthritis	109	22	71	92	65
MJ28	414	bovine	Canada	Alberta	joint	2015	pneumonia, arthritis	124	36	45	101	66
MJ29	415	bovine	Canada	Alberta	lung	2015	pneumonia, arthritis	124	36	45	159	66
MJ30	416	bovine	Canada	Alberta	lung	2007	pneumonia	10	25	52	183	67
MJ32	418	bovine	Canada	Alberta	joint	2007	pneumonia, arthritis	125	3	2	176	68
MJ33	419	bovine	Canada	Alberta	nasal cavity	2007	pneumonia, arthritis	125	3	2	99	68
MJ34	420	bovine	Canada	Alberta	lung	2007	pneumonia, arthritis	125	3	2	193	68
MJ36	422	bovine	Canada	Alberta	joint	2007	pneumonia, arthritis	10	15	16	213	69
MJ37	423	bovine	Canada	Saskatchewan	lung	2007	healthy	126	23	48	86	70
MJ38	424	bovine	Canada	Saskatchewan	nasal cavity	2007	healthy	2	13	24	33	71
MJ290	507	bovine	Canada	Saskatchewan	nasal cavity	2007	healthy	108	25	70	97	71
MJ42	508	bovine	Canada	Alberta	lung	2016	pneumonia, arthritis	NT21	2	19	28	72
MJ43	429	bovine	Canada	Alberta	lung	2015	pneumonia, arthritis	10	34	76	75	72
MJ114	500	bovine	Canada	Alberta	joint	2015	pneumonia, arthritis	10	34	76	72	73
MJ44	430	bovine	Canada	Alberta	lung	2015	pneumonia	128	16	41	51	74
MJ45	431	bovine	Canada	Alberta	lung	2015	pneumonia	123	25	65	54	75
MJ52	438	bovine	Canada	Saskatchewan	nasal cavity	2008	pneumonia	2	13	24	40	76
MJ59	445	bovine	Canada	Saskatchewan	nasal cavity	2008	pneumonia	2	25	62	83	76
MJ67	453	bovine	Canada	Saskatchewan	nasal cavity	2007	healthy	2	13	24	85	77
MJ50	436	bovine	Canada	Saskatchewan	nasal cavity	2007	pneumonia	2	13	24	47	78
MJ49	435	bovine	Canada	Saskatchewan	nasal cavity	2007	healthy	125	4	40	37	79
MJ55	441	bovine	Canada	Saskatchewan	nasal cavity	2007	healthy	125	4	40	51	80
MJ53	439	bovine	Canada	Saskatchewan	lung	2007	healthy	125	4	40	62	81
MJ54	440	bovine	Canada	Saskatchewan	nasal cavity	2007	healthy	5	8	21	64	82
MJ56	442	bovine	Canada	Saskatchewan	nasal cavity	2007	healthy	126	23	48	47	83
MJ78	464	bovine	Canada	Saskatchewan	nasal cavity	2007	healthy	2	13	24	86	84
MJ60	446	bovine	Canada	Saskatchewan	nasal cavity	2007	healthy	125	4	40	85	85
MJ61	447	bovine	Canada	Alberta	joint	2008	pneumonia, arthritis	111	37	75	27	86
MJ62	448	bovine	Canada	Alberta	lung	2008	pneumonia	123	25	65	83	87
MJ63	449	bovine	Canada	Saskatchewan	lung	2008	pneumonia	10	25	52	69	88
MJ64	450	bovine	Canada	Alberta	joint	2007	pneumonia, arthritis	10	25	52	37	89
MJ65	451	bovine	Canada	Alberta	lung	2007	pneumonia	5	8	21	41	90

MJ66	452	bovine	Canada	Alberta	lung	2007	pneumonia	112	15	36	41	91
MJ70	456	bovine	Canada	Saskatchewan	nasal cavity	2007	healthy	2	13	24	38	92
MJ72	458	bovine	Canada	Saskatchewan	nasal cavity	2007	healthy	5	8	21	51	93
MJ73	459	bovine	Canada	Saskatchewan	nasal cavity	2007	healthy	5	8	21	33	94
MJ74	460	bovine	Canada	Saskatchewan	nasal cavity	2007	healthy	2	13	24	65	95
MJ75	461	bovine	Canada	Saskatchewan	nasal cavity	2007	healthy	113	9	22	53	96
MJ77	463	bovine	Canada	Saskatchewan	nasal cavity	2007	healthy	2	13	24	87	97
MJ79	465	bovine	Canada	Alberta	lung	2008	pneumonia	NT3	25	62	41	98
MJ80	466	bovine	Canada	Alberta	joint	2008	pneumonia, arthritis	NT3	25	62	25	99
MJ81	467	bovine	Canada	Alberta	lung	2009	pneumonia, arthritis	114	34	78	111	100
MJ85	471	bovine	Canada	Saskatchewan	nasal cavity	2007	healthy	2	13	24	90	101
MJ86	472	bovine	Canada	Alberta	lung	2015	pneumonia, arthritis	10	34	76	35	102
MJ87	473	bovine	Canada	Alberta	lung	2014	pneumonia	12	27	64	54	103
MJ89	475	bovine	Canada	Alberta	joint	2014	pneumonia, arthritis	121	16	42	36	
MJ99	485	bovine	Canada	Alberta	lung	2014	pneumonia, arthritis	121	16	42	100	104
MJ90	476	bovine	Canada	Alberta	lung	2014	pneumonia	109	22	71	88	105
MJ92	478	bovine	Canada	Alberta	lung	2014	pneumonia	130	25	57	34	106
MJ94	480	bovine	Canada	western Canada	ear	2015	otitis	10	24	52	66	107
MJ95	481	bovine	Canada	Alberta	lung	2014	pneumonia	130	25	57	84	108
MJ96	482	bovine	Canada	Alberta	lung	2014	pneumonia	121	16	42	48	109
MJ98	484	bovine	Canada	Alberta	joint	2014	pneumonia, arthritis	128	14	17	81	
MJ101	487	bovine	Canada	Alberta	lung	2014	pneumonia, arthritis	128	14	17	64	110
MJ100	486	bovine	Canada	Alberta	lung	2014	pneumonia	57	20	43	63	111
MJ102	488	bovine	Canada	Alberta	joint	2014	arthritis	10	34	76	61	
MJ161	883	bovine	Canada	Alberta	joint	2014	arthritis	12	27	64	PCR amplicons	
MJ162	884	bovine	Canada	Alberta	joint	2014	arthritis	121	16	42	PCR amplicons	112
MJ104	490	bovine	Canada	Alberta	lung	2014	pneumonia, arthritis	109	22	71	72	
MJ155	880	bovine	Canada	Alberta	lung	2014	pneumonia, arthritis	10	34	76	PCR amplicons	
MJ156	881	bovine	Canada	Alberta	lung	2014	pneumonia, arthritis	125	3	2	PCR amplicons	113
MJ105	491	bovine	Canada	Alberta	joint	2014	arthritis	109	22	71	116	114
MJ108	494	bovine	Canada	Alberta	lung	2015	pneumonia	123	25	65	41	115
MJ41	509	bovine	Canada	Alberta	lung	2015	pneumonia, arthritis	NT18	11	20	41	
MJ109	495	bovine	Canada	Alberta	joint	2015	pneumonia, arthritis	125	3	2	45	
MJ192	874	bovine	Canada	Alberta	lung	2015	pneumonia, arthritis	73	2	19	PCR amplicons	
MJ193	875	bovine	Canada	Alberta	lung	2015	pneumonia, arthritis	6	11	20	PCR amplicons	116
MJ110	496	bovine	Canada	Alberta	lung	2015	pneumonia	12	27	64	63	117
MJ111	497	bovine	Canada	Alberta	lung or joint	2015	pneumonia	123	25	65	64	118
MJ112	498	bovine	Canada	Alberta	joint	2014	pneumonia, arthritis	121	16	42	61	
MJ113	499	bovine	Canada	Alberta	lung	2014	pneumonia, arthritis	10	34	76	79	
MJ188	873	bovine	Canada	Alberta	joint	2014	pneumonia, arthritis	130	25	57	PCR amplicons	119
MJ115	501	bovine	Canada	Alberta	lung or joint	2015	pneumonia	10	34	76	116	120
MJ117	503	bovine	Canada	Alberta	lung	2015	pneumonia	125	3	2	50	121
MJ118	504	bovine	Canada	Alberta	lung	2014	pneumonia, arthritis	121	16	42	41	
MJ119	505	bovine	Canada	Alberta	joint	2014	pneumonia, arthritis	10	34	76	45	122
MJ120	763	bovine	Canada	Alberta	lung	2015	pneumonia	123	25	65	54	123
MJ232	896	bovine	Canada	Saskatchewan	nasal cavity	2008	pneumonia	125	3	2	PCR amplicons	124
MJ203	893	bovine	Canada	Saskatchewan	nasal cavity	2008	pneumonia	125	3	2	PCR amplicons	
MJ204	894	bovine	Canada	Saskatchewan	nasal cavity	2008	pneumonia	5	74	21	PCR amplicons	125
MJ234	510	bovine	Canada	Alberta	lung	2016	pneumonia, arthritis	174	34	77	73	126
MJ235	511	bovine	Canada	Alberta	lung	2016	pneumonia, arthritis	123	25	65	137	
MJ236	512	bovine	Canada	Alberta	joint	2016	pneumonia, arthritis	123	25	65	104	127
MJ237	513	bovine	Canada	Alberta	lung	2016	pneumonia, arthritis	NT18	23	60	106	
MJ238	514	bovine	Canada	Alberta	joint	2016	pneumonia, arthritis	NT18	23	60	116	128
MJ239	515	bovine	Canada	Alberta	lung	2016	pneumonia, arthritis	123	25	65	99	
MJ240	516	bovine	Canada	Alberta	joint	2016	pneumonia, arthritis	NT18	23	60	100	129
MJ241	517	bovine	Canada	Alberta	lung	2016	pneumonia, arthritis	NT18	23	60	104	
MJ242	518	bovine	Canada	Alberta	joint	2016	pneumonia, arthritis	NT18	23	60	97	130
MJ243	519	bovine	Canada	Alberta	lung	2016	pneumonia, arthritis	NT22	28	61	86	131
MJ244	520	bovine	Canada	Alberta	lung	2016	pneumonia, arthritis	NT18	23	60	86	
MJ245	521	bovine	Canada	Alberta	joint	2016	pneumonia, arthritis	NT18	23	60	100	132
MJ246	522	bovine	Canada	Alberta	joint	2016	pneumonia, arthritis	10	25	52	38	133
MJ247	523	bovine	Canada	Alberta	lung	2017	pneumonia, arthritis	123	25	65	64	
MJ248	524	bovine	Canada	Alberta	joint	2017	pneumonia, arthritis	123	25	65	83	134
MJ249	525	bovine	Canada	Alberta	lung	2016	pneumonia, arthritis	NT18	23	60	89	
MJ250	526	bovine	Canada	Alberta	joint	2016	pneumonia, arthritis	NT18	23	60	107	135
MJ251	527	bovine	Canada	Alberta	lung	2016	pneumonia, arthritis	123	25	65	130	
MJ252	528	bovine	Canada	Alberta	joint	2016	pneumonia, arthritis	175	34	79	81	136
MJ253	529	bovine	Canada	Alberta	lung	2016	pneumonia	NT18	23	60	89	137
MJ254	1057	bovine	Canada	Alberta	joint	2016	pneumonia, arthritis	123	25	65	66	138
MJ255	1058	bovine	Canada	Alberta	lung	2017	pneumonia, arthritis	10	25	52	101	
MJ256	1059	bovine	Canada	Alberta	joint	2017	pneumonia, arthritis	10	25	52	118	139
MJ257	1060	bovine	Canada	Alberta	lung	2017	pneumonia, arthritis	10	25	52	120	140
MJ258	1061	bovine	Canada	Alberta	lung	2017	pneumonia, arthritis	NT18	23	60	130	
MJ259	1062	bovine	Canada	Alberta	joint	2017	pneumonia, arthritis	125	3	2	110	141
MJ260	1063	bovine	Canada	Alberta	lung	2017	pneumonia, arthritis	NT1	8	21	100	142
MJ261	1064	bovine	Canada	Alberta	lung	2017	pneumonia, arthritis	NT20	23	67	135	
MJ262	1065	bovine	Canada	Alberta	joint	2017	pneumonia, arthritis	NT20	23	67	97	143
MJ263	1066	bovine	Canada	Alberta	lung	2017	pneumonia, arthritis	NT19	17	68	33	144
MJ264	1067	bovine	Canada	Alberta	joint	2017	pneumonia, arthritis	176	25	59	146	145
MJ265	1068	bovine	Canada	Alberta	lung	2017	pneumonia, arthritis	NT1	8	21	141	
MJ266	1069	bovine	Canada	Alberta	joint	2017	pneumonia, arthritis	122	35	80	164	146
MJ267	1070	bovine	Canada	Alberta	lung	2017	pneumonia, arthritis	177	36	44	93	
MJ268	1071	bovine	Canada	Alberta	joint	2017	pneumonia, arthritis	177	36	44	132	147
MJ269	1072	bovine	Canada	Alberta	lung	2017	pneumonia, arthritis	NT20	23	67	77	
MJ270	1073	bovine	Canada	Alberta	joint	2017	pneumonia, arthritis	10	25	52	155	148
MJ271	1074	bovine	Canada	Alberta	lung	2017	pneumonia, arthritis	NT20	23	67	140	
MJ272	1075	bovine	Canada	Alberta	joint	2017	pneumonia, arthritis	177	36	44	143	149
MJ273	1076	bovine	Canada	Alberta	lung	2017	pneumonia, arthritis	177	36	44	108	
MJ274	1077	bovine	Canada	Alberta	joint	2017	pneumonia, arthritis	177	36	44	54	150
MJ275	1078	bovine	Canada	Alberta	lung	2017	pneumonia, arthritis	177	36	44	74	151
MJ276	1079	bovine	Canada	Alberta	joint	2017	pneumonia, arthritis	NT20	23	67	99	
MJ277	1080	bovine	Canada	Alberta	lung	2017	pneumonia, arthritis	NT20	23	67	93	152
MJ278	1081	bovine	Canada	Alberta	joint	2017	pneumonia, arthritis	177	36	44	81	
MJ279	1082	bovine	Canada	Alberta	lung	2017	pneumonia, arthritis	10	25	52	68	153
MJ280	1083	bovine	Canada	Alberta	lung	2017	pneumonia, arthritis	178	21	45	68	
MJ281	1084	bovine	Canada	Alberta	joint	2017	pneumonia, arthritis	177	36	44	70	154
MJ282	1085	bovine	Canada	Alberta	lung	2017	pneumonia, arthritis	NT20	23	67	109	
MJ283	1086	bovine	Canada	Alberta	joint	2017	pneumonia, arthritis	NT20	23	67	84	
MJ284	1087	bovine	Canada	Alberta	joint	2017	pneumonia, arthritis	177	36	44	58	155
MJ285	1088	bovine	Canada	Alberta	lung	2017	pneumonia, arthritis	179	36	47	38	156

MJ286	1089	bovine	Canada	Alberta	joint	2017	pneumonia, arthritis	177	36	44	62	
MJ287	1090	bovine	Canada	Alberta	lung	2017	pneumonia, arthritis	NT1	8	21	128	157
MJ288	1091	bovine	Canada	Alberta	joint	2017	pneumonia, arthritis	NT20	23	67	123	158
MJ289	1092	bovine	Canada	Alberta	lung	2017	pneumonia, arthritis	177	36	44	72	159
MJ291	1093	bovine	Canada	Alberta	lung	2015	pneumonia	NT18	23	60	97	160
MJ292	1094	bovine	Canada	Alberta	lung	2014	pneumonia	121	16	42	83	161
MJ293	1095	bovine	Canada	Alberta	lung	2015	pneumonia	108	25	70	55	162
JF4278	137	bovine	Switzerland		milk	2008	mastitis, pneumonia	NT1	8	21	LT578453.1	163
Somalia	148	bovine	Switzerland		lung	2010	pneumonia	5	8	21	150	164
PP100	164	bovine	Switzerland		lung	1993	unknown	17	73	12	1184	165
1067	1011	bovine	France	Morbihan	unknown	1983	unknown	171	1	13	LAUT01	166
8830	651	bovine	Hungary ^b		lung	2006	pneumonia	14	43	7	WFEH00000000	167
2029	652	bovine	Hungary ^b		lung	2006	pneumonia	143	43	10	WFEI00000000	168
4877	653	bovine	Hungary ^b		lung	2006	pneumonia	42	58	6	WFEJ00000000	169
3374	654	bovine	Hungary ^b		lung	2006	pneumonia	14	43	7	WFEK00000000	170
77	655	bovine	Hungary ^b		lung	2006	pneumonia	14	43	7	WFEL00000000	171
3893	657	bovine	Hungary ^b		lung	2007	pneumonia	10	25	52	WFEM00000000	172
9593	658	bovine	Hungary ^b		lung	2008	pneumonia	18	43	8	WFEN00000000	173
2600	659	bovine	Hungary ^b		lung	2008	pneumonia	42	58	6	WJDX00000000	174
6866	660	bovine	Hungary ^b		lung	2008	pneumonia	18	43	8	WFEO00000000	175
67405	661	bovine	Hungary ^b		lung	2010	pneumonia	18	43	8	WFEP00000000	176
97640	662	bovine	Hungary ^b		lung	2011	pneumonia	145	58	39	WFEQ00000000	177
F597	663	bovine	Hungary ^b		lung	2013	pneumonia	NT15	59	11	WFER00000000	178
F897	664	bovine	Hungary ^b		lung	2014	pneumonia	5	8	21	WJDW00000000	179
212255	665	bovine	Hungary ^b		lung	2014	pneumonia	27	60	26	WFES00000000	180
F1106	666	bovine	Hungary ^b		lung	2016	pneumonia	NT8	47	29	WFET00000000	181
81	627	bovine	Lithuania ^b		lung	2006	pneumonia	17	1	12	WFDM00000000	182
7910	628	bovine	Lithuania ^b		lung	2007	pneumonia	18	43	8	WFDN00000000	183
0-747	629	bovine	Lithuania ^b		lung	2008	pneumonia	14	43	7	WFDO00000000	184
2832	630	bovine	Lithuania ^b		lung	2008	pneumonia	14	43	7	WFDP00000000	185
4036	631	bovine	Lithuania ^b		lung	2009	pneumonia	14	43	7	WFDQ00000000	186
F445	633	bovine	Lithuania ^b		lung	2011	pneumonia	145	58	39	WFDRO00000000	187
F472	634	bovine	Lithuania ^b		lung	2012	pneumonia	42	50	6	WFDS00000000	188
F562	635	bovine	Lithuania ^b		lung	2012	pneumonia	42	50	6	WFDT00000000	189
F584	636	bovine	Lithuania ^b		lung	2013	pneumonia	42	50	6	WFDU00000000	190
140015	623	bovine	Romania		milk	2013	mastitis	NT14	47	32	WFDI00000000	191
148139	667	bovine	Romania ^b		lung	2012	pneumonia	5	8	21	WFEU00000000	192
149697	668	bovine	Romania ^b		lung	2012	pneumonia	5	8	21	WFEV00000000	193
F790	671	bovine	Romania ^b		lung	2014	pneumonia	5	8	21	WFEW00000000	194
253726	672	bovine	Romania ^b		lung	2016	pneumonia	NT16	61	28	WFEX00000000	195
161801	624	bovine	Russia		milk	2013	mastitis	10	25	52	WFDJ00000000	196
233310	625	bovine	Russia		milk	2015	mastitis	46	56	69	WFDK00000000	197
180323	626	bovine	Russia	Kuban	milk	2013	mastitis	144	57	49	WFDL00000000	198
KG4397	971	bovine	Japan	Kagoshima	nasal cavity	2012	unknown	132	77	1	AP019558	199
Hubei-1	26	bovine	China	Hubei	lung	2008	pneumonia	26	31	53	CP002513.1	200
HB0801	97	bovine	China	Hubei	lung	2008	pneumonia	10	25	52	CP002058.1	201
CQ-W70	32	bovine	China	Yunyang County	lung	2009	unknown	32	31	72	CP005933.1	202
NM2012	305	bovine	China	inner Mongolia	joint	2012	pneumonia, arthritis	10	25	52	CP011348.1	203
08M	306	bovine	China	Jiangxi	lung	2008	pneumonia	10	25	52	CP019639.1	204
Ningxia-1	307	bovine	China	Ningxia	lung	2013	pneumonia	134	25	54	CP023663.1	205
16M	1010	bovine	China	Shandong	lung	2016	pneumonia, arthritis	10	25	52	CP038861.1	206
HS-130614	1012	bovine	China	Hubei	unknown	2013	unknown	10	25	52	MAQC01	207
J51075-NHD0955	788	bovine	China	Hubei	lung	2008	unknown	10	25	52	LZYL01	208
SZ-NHD0960	789	bovine	China	Hubei	lung	2008	unknown	10	25	52	LZPT01	242
1834-NHD0953	790	bovine	China	Hubei	lung	2008	unknown	10	25	52	LZCX01	209
EZ-3-NHD0947	791	bovine	China	Hubei	lung	2008	unknown	10	25	52	MASL01	210
EZ-8-NHD0962	792	bovine	China	Hubei	lung	2008	unknown	32	25	72	LZPU01	211
XZ-1-NHD0981	793	bovine	China	Hubei	lung	2008	unknown	10	25	52	LZQC01	212
XZ-2-NHD0946	794	bovine	China	Hubei	lung	2008	unknown	10	25	52	MASK01	213
FX-NHD0970	795	bovine	China	Hubei	lung	2008	unknown	10	25	52	MARCO1	214
NNH-NHD0956	796	bovine	China	Hubei	larynx	2010	unknown	10	25	52	LZPP01	215
ZhX	798	bovine	China	Hubei	lung	2010	unknown	10	25	52	MAJH01	216
DY-NHD0963	799	bovine	China	Hubei	lung	2010	unknown	10	25	52	LZPV01	217
TY-120615-NHD0952	800	bovine	China	Hubei	lung	2012	unknown	10	25	52	LZCW01	218
JX-NHD0966	801	bovine	China	Hubei	lung	2012	unknown	10	25	52	LZPY01	219
F150tu-NHD0954	802	bovine	China	Hubei	lung	2012	unknown	10	25	52	LZYG01	220
F150niu-NHD0949	803	bovine	China	Hubei	lung	2012	unknown	10	25	52	LYZB01	221
Dyrenong-NHD0951	804	bovine	China	Hubei	lung	2012	unknown	10	25	52	LYUN01	222
HB0801-rengong NHD0989	805	bovine	China	Hubei	lung	2012	unknown	10	25	52	LZPF01	223
SY-NHD0950	806	bovine	China	Hubei	lung	2013	unknown	10	25	52	LYUM01	224
WX-NHD0964	807	bovine	China	Hubei	joint	2013	unknown	10	25	52	LZPW01	225
YC-NHD0967	808	bovine	China	Hubei	milk	2013	unknown	10	25	52	LZPZ01	226
BZ-NHD0982	811	bovine	China	Anhui	lung	2008	unknown	10	25	52	LZNL01	227
XM	812	bovine	China	Fujian	lung	2009	unknown	10	25	52	LZPS01	228
XMrengong-NHD0985	813	bovine	China	Fujian	lung	2012	unknown	10	25	52	LZNO01	229
LJ1225-NHD0945	814	bovine	China	Hunan	lung	2009	unknown	10	25	52	LYUL01	230
YL-NHD0941	815	bovine	China	Henan	lung	2009	unknown	10	25	52	LYMD01	231
KF	816	bovine	China	Henan	lung	2009	unknown	10	25	52	MAJE01	232
YL0724-NHD0957	817	bovine	China	Henan	lung	2009	unknown	10	25	52	LZPQ01	233
YJ0719-NHD0958	818	bovine	China	Henan	lung	2012	unknown	10	25	52	LZPR01	234
KEQ-NHD0988	819	bovine	China	Henan	lung	2010	unknown	10	25	52	LZLNQ01	235
KLQ	820	bovine	China	Henan	lung	2010	unknown	10	25	52	LZPX01	236
ZMD	821	bovine	China	Henan	lung	2011	unknown	10	25	52	LZNP01	237
YLrengong-NHD0968	822	bovine	China	Henan	lung	2012	unknown	10	25	52	LZQA01	238
YL2086	823	bovine	China	Inner Mongolia	lung	2012	unknown	10	25	52	LYPO01	239
JXXY	824	bovine	China	Jiangxi	lung	2012	unknown	10	25	52	LYZA01	240
GA-NHD0984	825	bovine	China	Jiangxi	lung	2012	unknown	10	25	52	LZNN01	241
SG-NHD0983	828	bovine	China	Guangzhou	lung	2013	unknown	10	25	52	LZNM01	243
SD-130626-NHD0969	829	bovine	China	Shangdong	lung	2013	unknown	10	25	52	LZQB01	244
EZ-2	1055	bovine	China	Hubei	unknown	2008	unknown	43	25	56	LZPE01	245
SZ-0527	1056	bovine	China	Hubei	unknown	2012	unknown	10	75	87	MASM01	246
KS-1	531	bovine	Israel		milk	1994	mastitis	17	40	12	WFAC00000000	247
KS-11	532	bovine	Israel		milk	1997	mastitis	17	1	12	WFAD00000000	248
337	533	bovine	Israel		milk	2000	mastitis	137	41	82	WFAE00000000	249
800	534	bovine	Israel		milk	2004	mastitis	137	41	82	WFAF00000000	250
301	535	bovine	Israel		milk	2004	mastitis	138	42	83	WFAG00000000	251

6099	536	bovine	Israel	milk	2007	mastitis	10	25	52	WFAH00000000	252
347	537	bovine	Israel	milk	2008	mastitis	10	25	52	WFAI00000000	253
3574	538	bovine	Israel	milk	2008	mastitis	14	43	7	WFAJ00000000	254
432	539	bovine	Israel	milk	2008	mastitis	10	25	52	WFAK00000000	255
928	540	bovine	Israel	milk	2008	mastitis	10	25	52	WFAL00000000	256
758	541	bovine	Israel	milk	2008	mastitis	NT6	25	52	WFAM00000000	257
2621	542	bovine	Israel	milk	2008	mastitis	10	25	52	WFAN00000000	258
2622	543	bovine	Israel	milk	2008	mastitis	10	25	52	WFAO00000000	259
5428	544	bovine	Israel	milk	2008	mastitis	10	25	52	WFAP00000000	260
2715	545	bovine	Israel	milk	2008	mastitis	10	25	52	WFAQ00000000	261
110	547	bovine	Israel	milk	2008	mastitis	10	25	52	WFAR00000000	262
1662	548	bovine	Israel	milk	2008	mastitis	10	25	52	WFAS00000000	263
100217-23	549	bovine	Israel	milk	2008	mastitis	139	44	81	WFAT00000000	264
991-2	550	bovine	Israel	milk	2008	mastitis	10	45	52	WFAU00000000	265
889	551	bovine	Israel	milk	2008	mastitis	10	25	52	WFAV00000000	266
514	552	bovine	Israel	milk	2008	mastitis	17	1	12	WFAW00000000	267
10-155	553	bovine	Israel	milk	2008	mastitis	10	25	52	WFAX00000000	268
783	554	bovine	Israel	milk	2009	mastitis	10	25	52	WFAY00000000	269
26443	555	bovine	Israel	milk	2009	mastitis	10	25	52	WFAZ00000000	270
701	556	bovine	Israel	milk	2009	mastitis	10	25	52	WFBA00000000	271
102168	557	bovine	Israel	milk	2009	mastitis	139	44	81	WFB00000000	272
299	558	bovine	Israel	milk	2010	mastitis	10	25	52	WFB00000000	273
883	559	bovine	Israel	milk	2010	mastitis	10	25	52	WFB00000000	274
86812	106	bovine	Israel	milk	2010	mastitis	10	25	52	WFB00000000	275
415	561	bovine	Israel	milk	2011	mastitis	NT7	46	73	WFB00000000	276
65714	562	bovine	Israel	milk	2011	mastitis	10	25	52	WFB00000000	277
111449	563	bovine	Israel	milk	2011	mastitis	10	25	52	WFB00000000	278
108432	564	bovine	Israel	milk	2011	mastitis	NT6	25	52	WFB00000000	279
127377	565	bovine	Israel	milk	2012	mastitis	10	25	52	WFB00000000	280
126814	566	bovine	Israel	milk	2012	mastitis	10	25	52	WFB00000000	281
129771	567	bovine	Israel	milk	2012	mastitis	10	25	52	WFB00000000	282
145863	568	bovine	Israel	milk	2012	mastitis	NT8	47	29	WFB00000000	283
147524	569	bovine	Israel	milk	2012	mastitis	NT9	48	63	WFB00000000	284
147529	570	bovine	Israel	milk	2012	mastitis	10	25	52	WFB00000000	285
161791	571	bovine	Israel	milk	2012	mastitis	140	49	33	WFB00000000	286
138892	572	bovine	Israel	milk	2013	mastitis	NT9	23	63	WFB00000000	287
161032	573	bovine	Israel	milk	2013	mastitis	NT8	47	29	WFB00000000	288
138518	574	bovine	Israel	milk	2013	mastitis	NT9	23	63	WFB00000000	289
139667	575	bovine	Israel	milk	2013	mastitis	10	25	52	WFB00000000	290
170217	576	bovine	Israel	milk	2013	mastitis	NT6	25	52	WFB00000000	291
170228	577	bovine	Israel	milk	2013	mastitis	10	25	52	WFB00000000	292
173159	578	bovine	Israel	milk	2013	mastitis	NT9	48	63	WFB00000000	293
171852	579	bovine	Israel	milk	2013	mastitis	42	50	6	WFB00000000	294
178843	580	bovine	Israel	milk	2013	mastitis	10	25	52	WFB00000000	295
193896	582	bovine	Israel	milk	2014	mastitis	10	13	16	WFB00000000	296
194787	584	bovine	Israel	milk	2014	mastitis	140	49	33	WFB00000000	297
196966	585	bovine	Israel	milk	2014	mastitis	140	49	33	WFB00000000	298
200215	586	bovine	Israel	milk	2014	mastitis	NT8	47	29	WFB00000000	299
207520	587	bovine	Israel	milk	2014	mastitis	140	49	33	WFB00000000	300
209716	588	bovine	Israel	milk	2014	mastitis	10	25	52	WFB00000000	301
215948	589	bovine	Israel	milk	2014	mastitis	5	8	21	WFB00000000	302
216555	590	bovine	Israel	milk	2014	mastitis	NT10	13	18	WFB00000000	303
220642	591	bovine	Israel	milk	2015	mastitis	10	25	52	WFB00000000	304
219047	592	bovine	Israel	milk	2015	mastitis	140	49	33	WFB00000000	305
222991	593	bovine	Israel	milk	2015	mastitis	10	25	52	WFB00000000	306
224709	594	bovine	Israel	milk	2015	mastitis	NT8	47	29	WFB00000000	307
227457	595	bovine	Israel	milk	2015	mastitis	10	25	52	WFB00000000	308
227456	596	bovine	Israel	milk	2015	mastitis	10	25	52	WFB00000000	309
227455	597	bovine	Israel	milk	2015	mastitis	10	25	52	WFB00000000	310
227465	598	bovine	Israel	milk	2015	mastitis	10	25	52	WFB00000000	311
227462	599	bovine	Israel	milk	2015	mastitis	5	8	21	WFB00000000	312
228404	600	bovine	Israel	milk	2015	mastitis	10	25	52	WFB00000000	313
241741	601	bovine	Israel	milk	2015	mastitis	141	25	58	WFB00000000	314
242384	602	bovine	Israel	milk	2015	mastitis	140	51	33	WFB00000000	315
256832	604	bovine	Israel	milk	2016	mastitis	27	52	26	WFB00000000	316
261002	605	bovine	Israel	milk	2016	mastitis	140	49	33	WFB00000000	317
254410	606	bovine	Israel	milk	2016	mastitis	10	25	52	WFB00000000	318
280413	609	bovine	Israel	milk	2016	mastitis	10	25	52	WFB00000000	319
290360	610	bovine	Israel	milk	2017	mastitis	10	53	52	WFB00000000	320
290363	611	bovine	Israel	milk	2017	mastitis	NT8	47	29	WFB00000000	321
291066	612	bovine	Israel	milk	2017	mastitis	142	50	5	WFB00000000	322
290372	613	bovine	Israel	milk	2017	mastitis	NT11	47	31	WFB00000000	323
290364	614	bovine	Israel	milk	2017	mastitis	NT12	54	86	WFB00000000	324
294301	615	bovine	Israel	milk	2017	mastitis	NT12	54	86	WFB00000000	325
294298	616	bovine	Israel	milk	2017	mastitis	NT13	55	38	WFB00000000	326
14	619	bovine	Israel	semen	unknown	healthy	143	43	10	WFB00000000	327
8	620	bovine	Israel	semen	2005	healthy	143	43	10	WFB00000000	328
9	621	bovine	Israel	semen	2004	healthy	143	43	10	WFB00000000	329
3	622	bovine	Israel	semen	2001	healthy	143	43	10	WFB00000000	330
8168	673	bovine	Israel	lung	2006	pneumonia	137	62	82	WFB00000000	331
7245	674	bovine	Israel	lung	2006	pneumonia	14	43	7	WFB00000000	332
9771	675	bovine	Israel	lung	2006	pneumonia	14	43	7	WFB00000000	333
9470	676	bovine	Israel	lung	2006	pneumonia	137	63	82	WFB00000000	334
3181	677	bovine	Israel	lung	2006	pneumonia	14	43	7	WFB00000000	335
6226	678	bovine	Israel	nasal cavity	2006	healthy	14	43	7	WFB00000000	336
8395	679	bovine	Israel	lung	2006	pneumonia	181	64	37	WFB00000000	337
5180	680	bovine	Israel	lung	2006	pneumonia	10	65	52	WFB00000000	338
1972	681	bovine	Israel	lung	2007	pneumonia	14	43	7	WFB00000000	339
6656	682	bovine	Israel	lung	2008	pneumonia	14	43	7	WFB00000000	340
5028	683	bovine	Israel	lung	2008	pneumonia	10	25	52	WFB00000000	341
18525	684	bovine	Israel	lung	2008	pneumonia	10	25	52	WFB00000000	342
70262-1	685	bovine	Israel	vulva	2010	vulvitis	10	25	52	WFB00000000	343
72211	686	bovine	Israel	vulva	2010	vulvitis	10	25	52	WFB00000000	344
168689	687	bovine	Israel	fetal tissue	2013	abortion	146	8	35	WFB00000000	345
219363	688	bovine	Israel	lung	2015	pneumonia	10	25	52	WFB00000000	346
227285	689	bovine	Israel	lung	2015	pneumonia	42	50	6	WFB00000000	347
245810	690	bovine	Israel	lung	2015	pneumonia	147	66	85	WFB00000000	348
267780	691	bovine	Israel	lung	2016	pneumonia	148	67	4	WFB00000000	349
268681	692	bovine	Israel	eye	2016	conjunctivitis	NT6	25	52	WFB00000000	350
270940	693	bovine	Israel	lung	2016	pneumonia	NT6	25	52	WFB00000000	351

270649	694	bovine	Israel		lung	2016	pneumonia	5	68	21	WFFT00000000	352
259488	695	bovine	Israel		lung	2016	pneumonia	149	66	84	WFFU00000000	353
286093-1	696	bovine	Israel		larynx	2017	pneumonia	NT16	61	28	WFFV00000000	354
287942	697	bovine	Israel		lung	2017	pneumonia	10	25	52	WFFW00000000	355
290634	698	bovine	Israel		lung	2017	pneumonia	42	50	6	WFFX00000000	356
2A	639	bovine	Australia ^b		pharynx	2006	pneumonia	10	25	52	WFDV00000000	357
H	640	bovine	Australia ^b		joint	2006	arthritis	10	25	52	WFDW00000000	358
2D	641	bovine	Australia ^b		pharynx	2006	pneumonia	10	25	52	WFDX00000000	359
1254	642	bovine	Australia ^b		lung	2006	pneumonia	10	25	52	WFDY00000000	360
261552	643	bovine	Australia ^b		lung	2016	pneumonia	NT6	53	52	WFDZ00000000	361
41569	644	bovine	Australia ^b		lung	2009	pneumonia	10	25	52	WFEA00000000	362
2583	645	bovine	Australia ^b		larynx	2009	pneumonia	10	25	52	WFEB00000000	363
63307	99	bovine	Australia ^b		lung	2010	pneumonia	10	25	52	WFEC00000000	364
261553-9503	647	bovine	Australia ^b		joint	2016	arthritis	10	25	52	WFED00000000	365
261553-9655	648	bovine	Australia ^b		joint	2016	arthritis	10	25	52	WFEE00000000	366
261552-3688	649	bovine	Australia ^b		lung	2016	pneumonia	NT6	25	52	WFEF00000000	367
261552-2741	650	bovine	Australia ^b		lung	2016	pneumonia	10	53	52	WFEG00000000	368
NADC1	1	bison	United States	Montana	lung	2011	pneumonia	1	25	51	PCR amplicons	1
NADC5	36	bison	United States	Montana	lung	2011	pneumonia	1	25	51	348	2
NADC51	929	bison	United States	Montana	lung	2015	unknown	46	30	69	1360	3
NADC32	55	bison	United States	Nebraska	uterus	2012	unknown	1	25	51	365	4
NADC15	46	bison	United States	North Dakota	lung	2007	pneumonia	1	25	51	352	5
NADC28	54	bison	United States	South Dakota	pharynx	2012	pharyngitis, pneumonia	2	25	62	276	6
NADC30	3	bison	United States	South Dakota	lung	2012	pneumonia	2	25	62	479	7
NADC53	308	bison	United States	South Dakota	lung	2015	pneumonia	133	29	30	774	8
NADC44	389	bison	United States	Nebraska/South Dakota	lung, no lesions noted	2012	lameness	5	8	21	311	9
NADC45	67	bison	United States	Oklahoma	lung	2014	pneumonia	4	6	25	338	10
NADC50	390	bison	United States	Oklahoma	nasal cavity	2014	healthy	4	6	25	329	11
NADC72-1	530	bison	United States	Iowa	nasal cavity	2012	healthy	1	25	51	1206	12
NADC73-1	932	bison	United States	Iowa	nasal cavity	2012	healthy	1	25	51	89	13
NADC74-1	935	bison	United States	Iowa	nasal cavity	2012	healthy	1	25	51	155	14
NADC75-1	938	bison	United States	Iowa	nasal cavity	2012	healthy	1	25	51	68	15
NADC76-1	941	bison	United States	Iowa	nasal cavity	2012	healthy	1	25	51	68	16
NADC77-1	944	bison	United States	Iowa	nasal cavity	2012	healthy	1	25	51	44	17
NADC78-1	947	bison	United States	Iowa	nasal cavity	2012	healthy	1	25	51	64	18
NADC83-1	765	bison	United States	Iowa	lung	2016	bronchitis, pleuropneumonia	136	33	34	1075	19
MJ5	391	bison	Canada	Alberta	lung	2015	pneumonia	2	25	62	437	20
MJ9	395	bison	Canada	Alberta	lung	2015	pneumonia	2	25	62	342	21
MJ8	394	bison	Canada	Alberta	lung	2015	septicemia due to <i>Arcanobacterium pyogenes</i>	2	25	62	220	22
NADC18	49	bison	Canada	Alberta	lung of aborted fetus	2012	abortion	2	25	62	579	
NADC24	52	bison	Canada	Alberta	placenta	2012	abortion, pneumonia	2	25	62	211	23
NADC65	1098	bison	Canada	Alberta	joint	2013	pneumonia, arthritis	2	25	62	102	24
NADC66	1099	bison	Canada	Alberta	lung	2013	pneumonia	NT3	39	62	99	25
NADC69	1100	bison	Canada	Alberta	joint	2013	pneumonia	2	25	62	102	26
NADC81-1	764	bison	Canada	Alberta	nasal cavity	2017	healthy	135	38	50	1264	27
NADC82-1	966	bison	Canada	Alberta	nasal cavity	2017	healthy	135	38	50	61	28
NADC98-1	955	bison	Canada	Alberta	pharynx	2017	pharyngitis	57	20	43	115	29
MJ6	392	bison	Canada	Saskatchewan	lung	2015	pneumonia	2	25	62	381	30
MJ7	393	bison	Canada	Saskatchewan	lung	2015	pneumonia	2	25	62	379	31
MJ10	396	bison	Canada	Saskatchewan	lung	2015	pneumonia	2	25	62	331	32
NADC60	1097	bison	Canada	Saskatchewan	lung	2012	pneumonia	2	25	62	107	33
NADC35	58	bison	Canada	Manitoba	lung	2012	pneumonia	2	32	74	PCR amplicons	34
KRB1	386	mule deer	United States	Nevada	lung	2012	pneumonia, otitis	NT5	20	43	561	1
KRB8	388	white-tailed deer	United States	Minnesota	lung	2014	pneumonia	3	5	23	197	1
8790	1013	goat	Ethiopia	Harargue	unknown	1987	unknown	180	76	88	LAUS01	1

^a Isolates in bold font are those for which STs based on the method of Register *et. al.* (1) were previously reported (1, 2, 3). Isolates obtained from the same animal are shaded similarly

^bAnimals of origin were being imported to Israel from the country indicated at the time they were cultured for *M. bovis*. Samples from which isolates were obtained were collected in Israel in quarantine stations or, for animals that died during transport, at the Kimron Veterinary Institute.

Table S2. MLST profile definitions used for the Weybridge scheme^a

ST	atpA	dnaA	metS	recA	rpoD	tkf	tufA
1	A	A	A	A	A	A	A
2	A	A	B	A	B	G	E
3	A	A	E	A	B	G	F
4	A	B	E	A	B	G	F
5	B	A	B	A	D	E	E
6	C	A	B	A	D	E	E
7	C	A	B	A	D	H	A
8	C	A	B	A	D	I	E
9	C	A	B	A	D	J	E
10	C	A	B	A	E	E	C
11	C	A	B	B	D	E	E
12	C	A	B	D	D	E	E
13	C	A	E	D	D	E	E
14	C	A	E	D	D	I	E
15	C	A	F	D	D	E	E
16	C	C	B	D	D	I	E
17	C	E	B	D	D	E	G
18	C	C	C	D	D	I	E
19	B	A	B	A	E	H	A
20	C	D	E	D	D	E	E
21	N	E	B	D	D	B	D
22	C	E	B	A	E	E	E
23	C	E	B	D	D	E	E
24	C	E	E	A	D	E	E
25	C	E	E	D	D	E	E
26	C	E	E	D	D	F	E
27	C	E	E	D	D	I	E
28	C	E	B	D	D	C	E
29	F	A	B	D	D	E	E
30	C	E	B	A	D	B	E
31	C	E	H	D	D	E	E
32	C	F	E	D	D	E	E
33	B	A	E	A	E	E	E
34	C	G	E	D	D	E	E
35	C	H	E	A	D	E	E
36	D	E	B	A	D	B	D
37	E	G	D	A	D	B	B
38	C	E	B	D	D	I	E
39	G	E	E	D	D	E	E

40	A	A	A	A	F	A	A
41	I	I	L	E	G	M	I
42	K	J	K	F	H	K	H
43	H	A	F	A	B	H	A
44	C	I	E	D	G	E	E
45	C	E	E	C	D	E	E
46	C	E	J	E	D	L	E
47	C	A	F	A	D	H	E
48	C	E	B	A	D	E	E
49	J	A	E	D	D	E	J
50	C	A	I	A	B	A	A
51	L	A	E	D	D	E	J
52	C	A	B	A	C	H	E
53	C	E	E	D	I	E	E
54	C	K	E	E	J	E	E
55	C	A	E	E	J	E	J
56	C	E	B	D	D	B	E
57	C	E	E	D	D	D	E
58	H	A	I	A	B	A	A
59	C	A	B	A	D	A	A
60	C	A	B	A	D	H	E
61	H	A	B	A	D	H	E
62	I	I	M	A	G	M	I
63	I	I	M	E	G	M	I
64	J	A	N	A	J	M	J
65	C	E	E	D	D	E	A
66	J	K	F	E	J	H	J
67	A	A	O	A	D	G	F
68	M	A	B	A	D	I	E
69	A	E	P	D	D	E	F
70	N	E	E	D	D	E	E
71	A	A	E	A	D	G	E
72	A	A	B	A	D	I	A
73	A	A	G	A	A	A	A
74	C	A	B	A	D	I	K
75	C	L	E	D	D	E	E
76	O	M	Q	G	K	N	L
77	C	A	E	D	D	E	A

^a Allelic profiles indicated for the numerical ST designations used here do not correspond to those used for the same numerical ST designations reported in Rosales *et al.* (4).

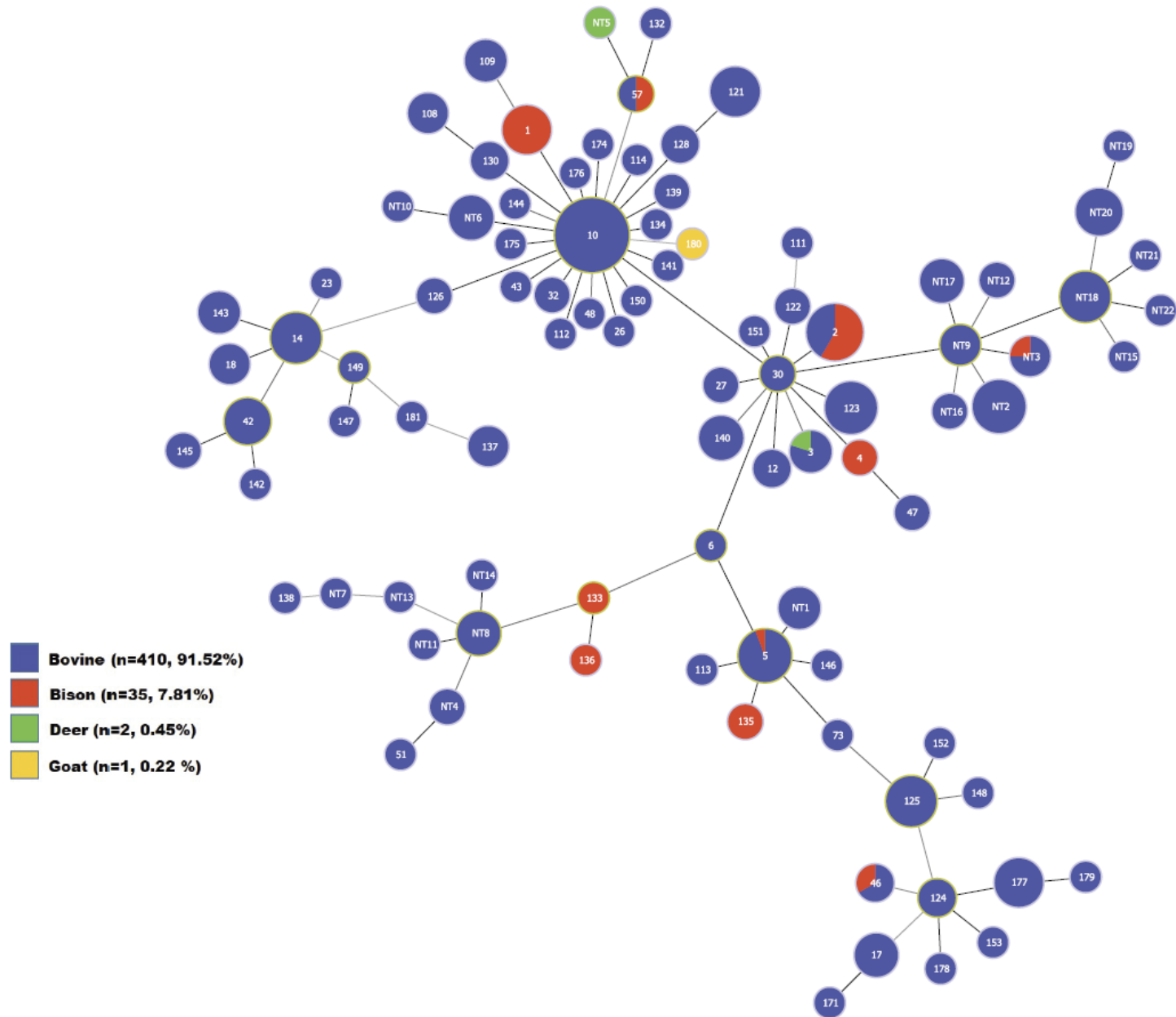


Fig. S1. Minimum spanning tree depicting evolutionary relationships among the 91 STs defined by the original PubMLST scheme for *M. bovis* found among the 448 isolates included in this study. STs are indicated by the numeral in each circle. Circles, or portions thereof, are sized in proportion to the number of isolates with the indicated ST (log scale) and colored to indicate the host(s) in which each ST was found, as specified in the color key.

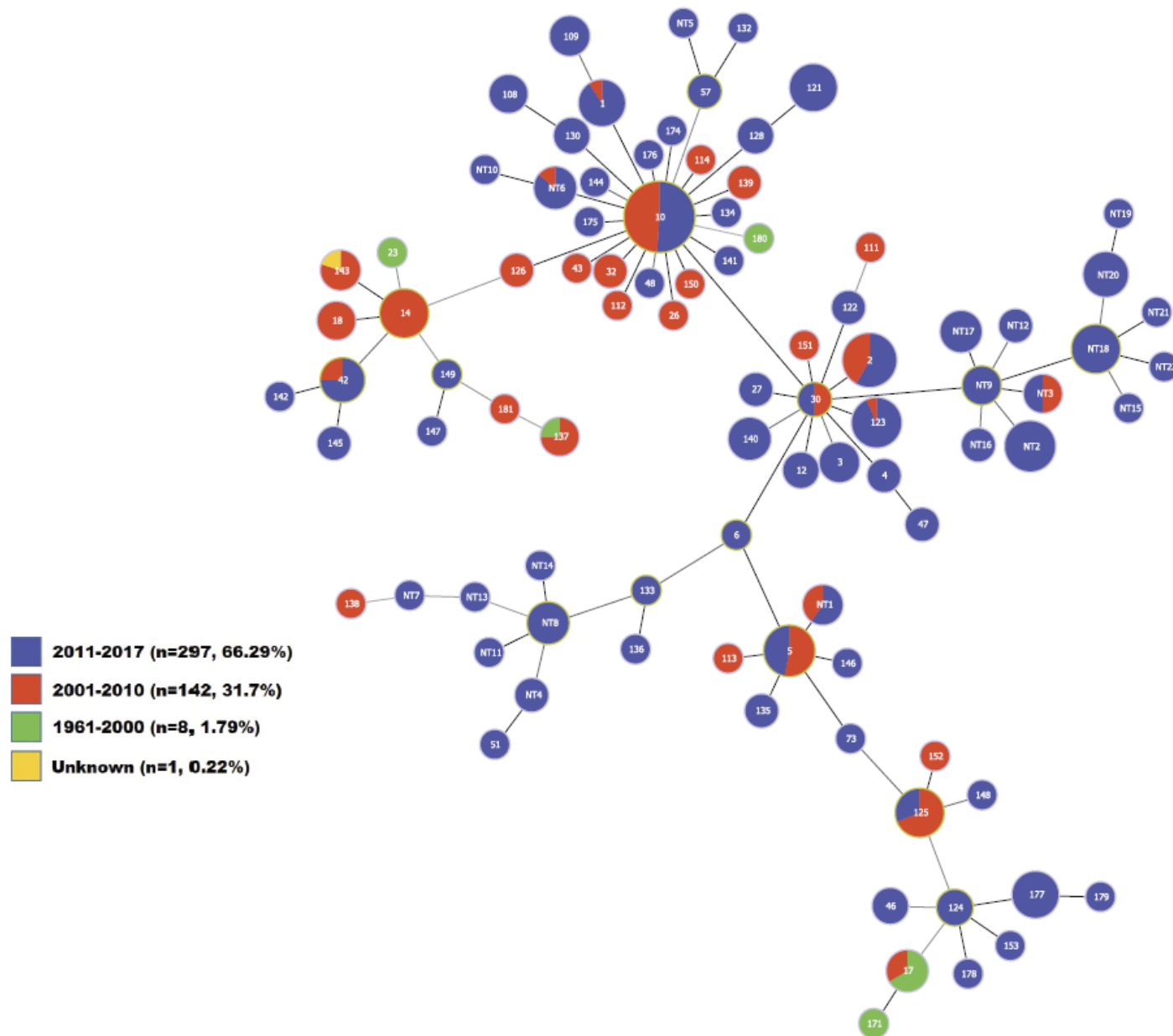


Fig. S2. Minimum spanning tree depicting evolutionary relationships among the 91 STs defined by the original PubMLST scheme for *M. bovis* found among the 448 isolates included in this study. STs are indicated by the numeral in each circle. Circles, or portions thereof, are sized in proportion to the number of isolates with the indicated ST (log scale) and are colored in accordance with the year of isolation, as specified in the color key.

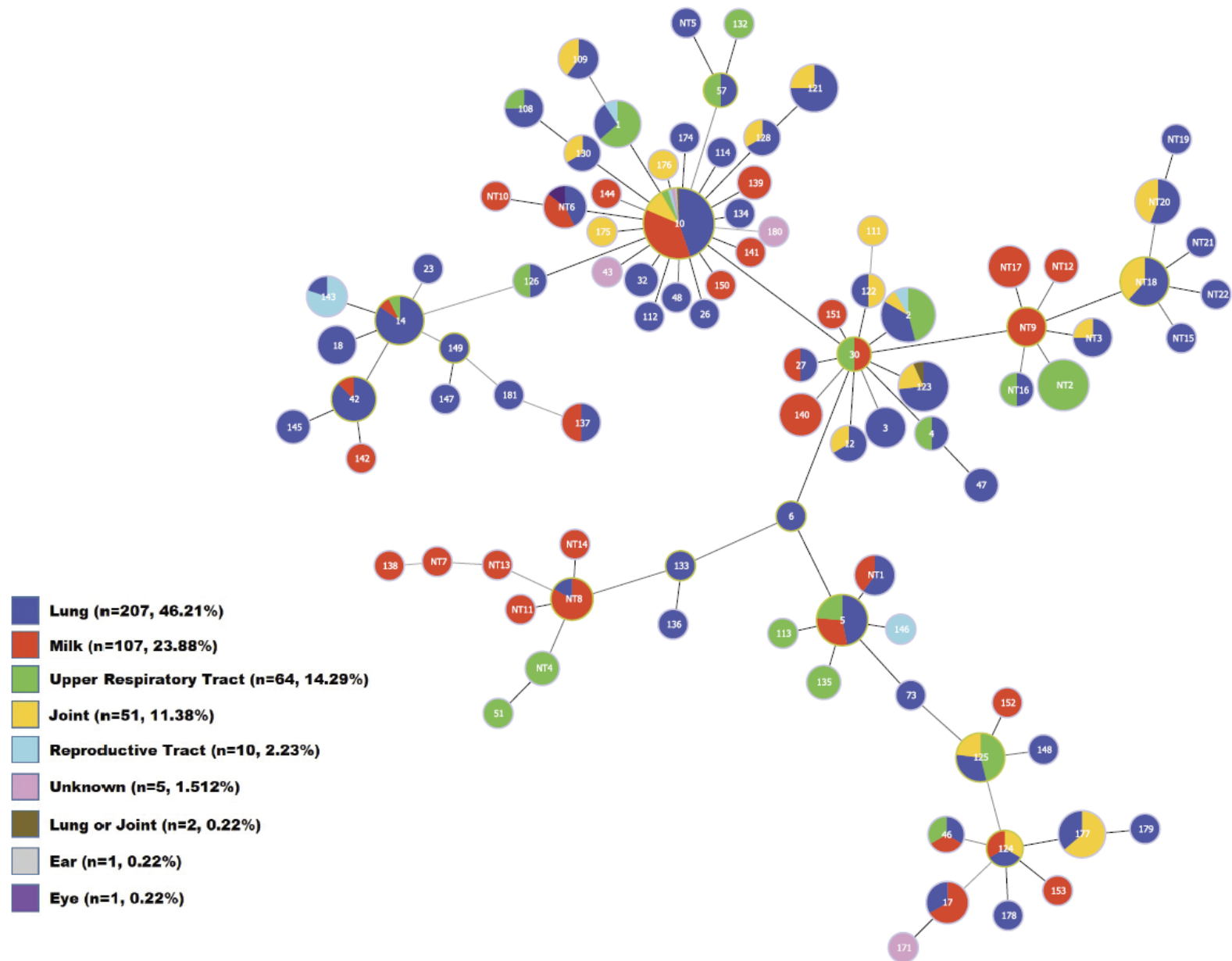


Fig. S3. Minimum spanning tree depicting evolutionary relationships among the 91 STs defined by the original PubMLST scheme for *M. bovis* found among the 448 isolates included in this study. STs are indicated by the numeral in each circle. Circles, or portions thereof, are sized in proportion to the number of isolates with the indicated ST (log scale) and colored in accordance with the anatomic site of origin, as specified in the color key.

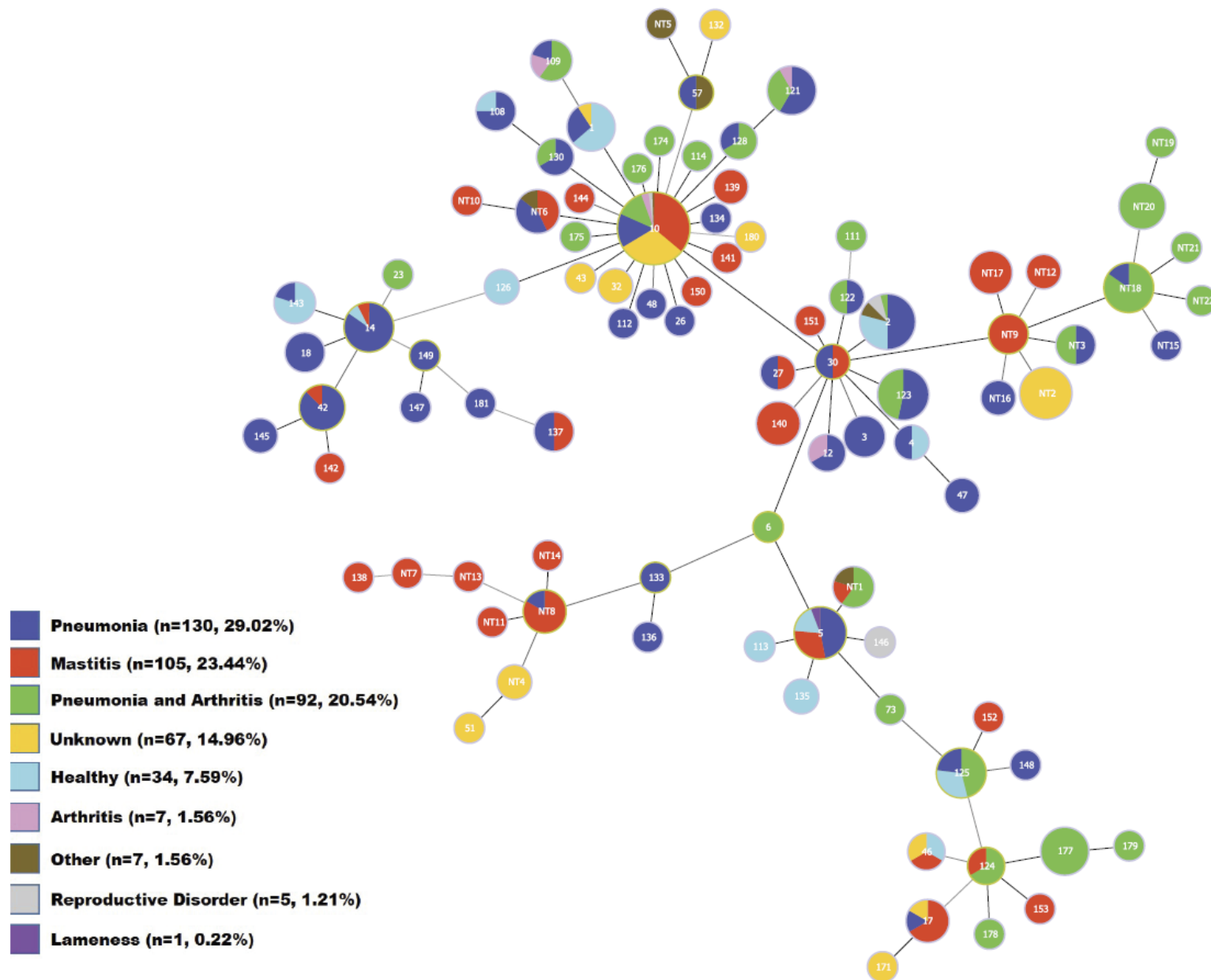


Fig. S4. Minimum spanning tree depicting evolutionary relationships among the 91 STs defined by the original PubMLST scheme for *M. bovis* found among the 448 isolates included in this study. STs are indicated by the numeral in each circle. Circles, or portions thereof, are sized in proportion to the number of isolates with the indicated ST (log scale) and colored in accordance with the clinical status of the animal of origin, as specified in the color key.

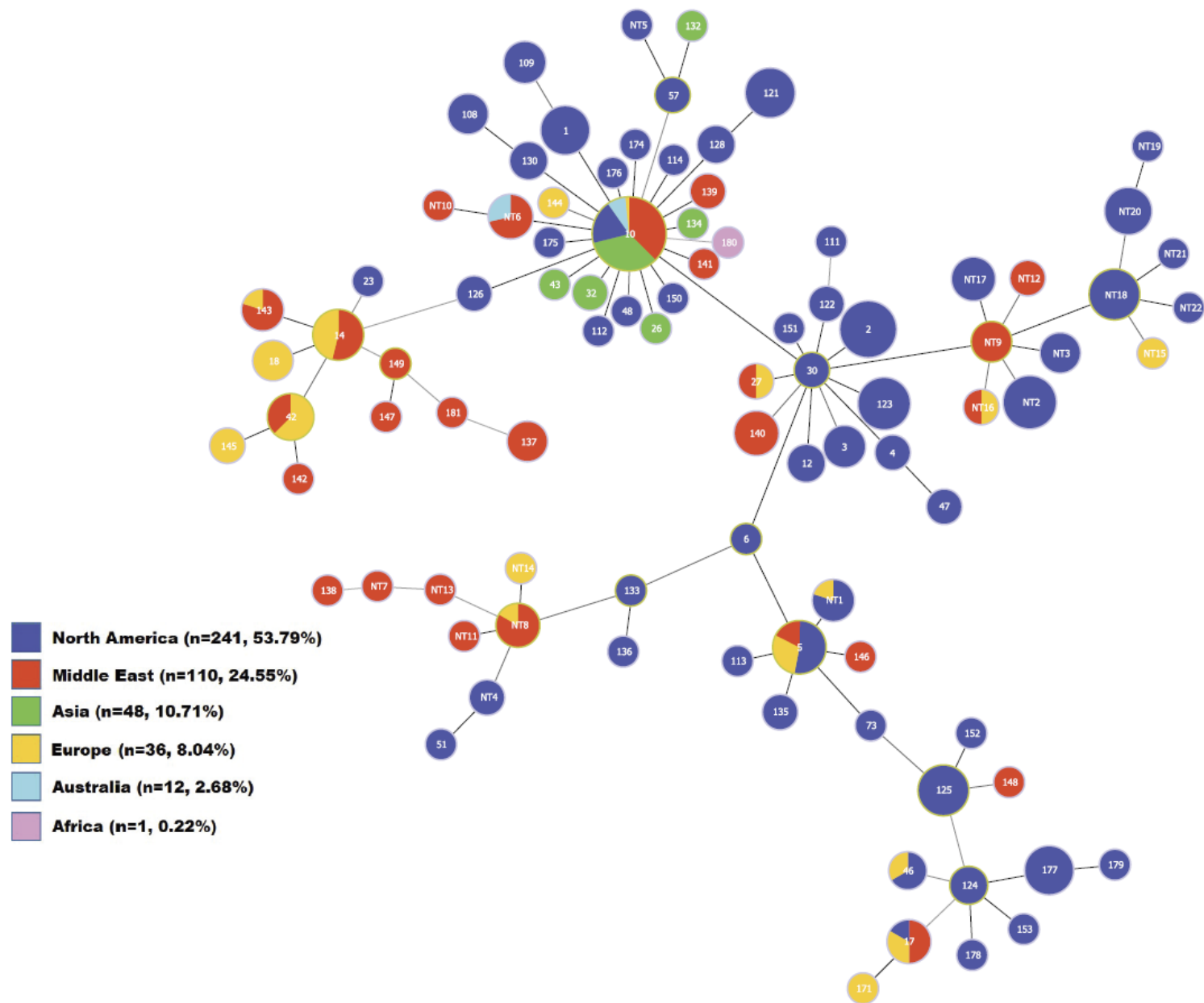


Fig. S5. Minimum spanning tree depicting evolutionary relationships among the 91 STs defined by the original PubMLST scheme for *M. bovis* found among the 448 isolates included in this study. STs are indicated by the numeral in each circle. Circles, or portions thereof, are sized in proportion to the number of isolates with the indicated ST (log scale) and colored in accordance with the geographic origin, as specified in the color key.

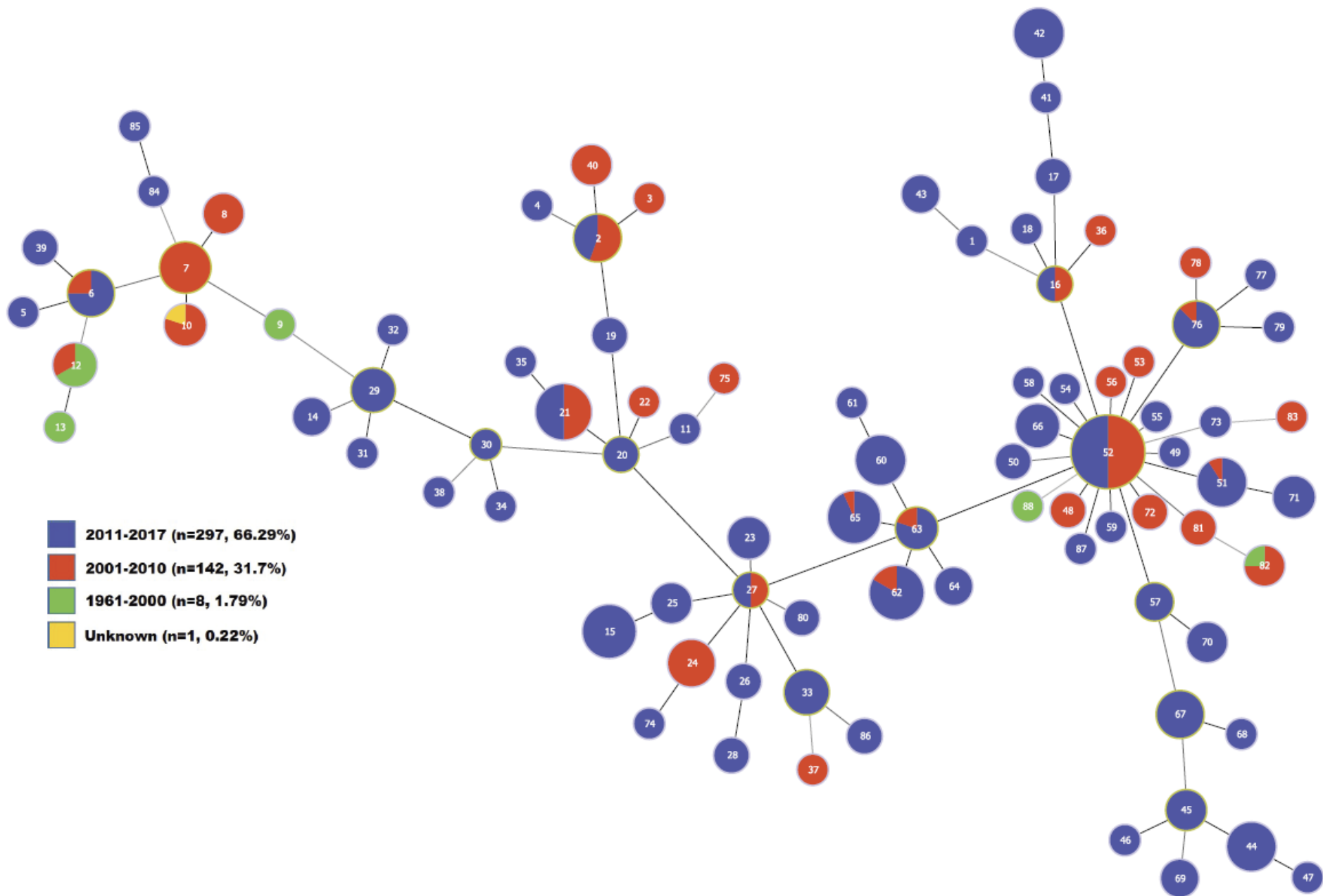


Fig. S6. Minimum spanning tree depicting evolutionary relationships among the 88 STs defined by the revised PubMLST scheme for *M. bovis* found among the 448 isolates included in this study. STs are indicated by the numeral in each circle. Circles, or portions thereof, are sized in proportion to the number of isolates with the indicated ST (log scale) and colored in accordance with the year of isolation, as specified in the color key.

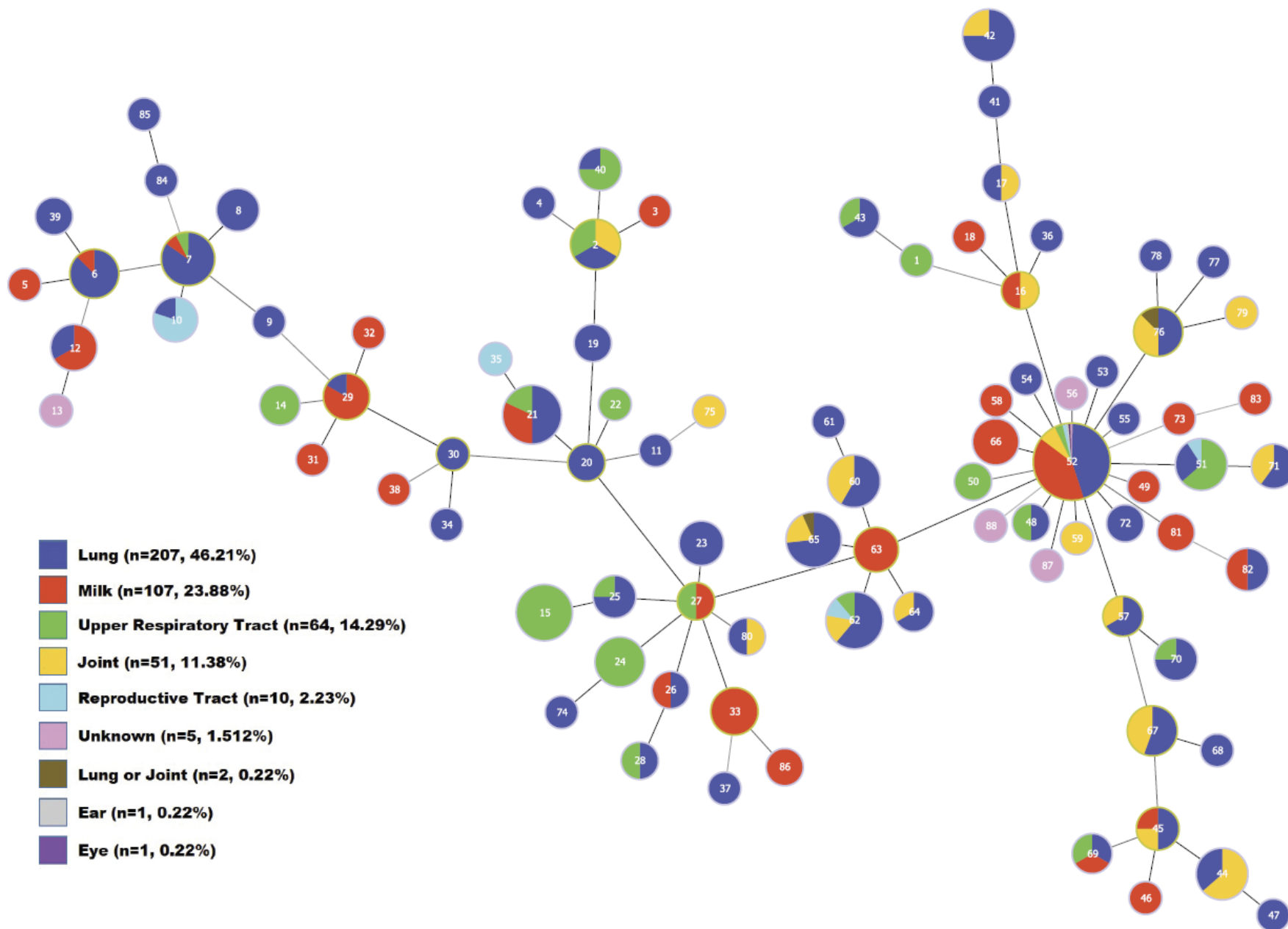


Fig. S7. Minimum spanning tree depicting evolutionary relationships among the 88 STs defined by the revised PubMLST scheme for *M. bovis* found among the 448 isolates included in this study. STs are indicated by the numeral in each circle. Circles, or portions thereof, are sized in proportion to the number of isolates with the indicated ST (log scale) and colored in accordance with the anatomic site of origin, as specified in the color key.

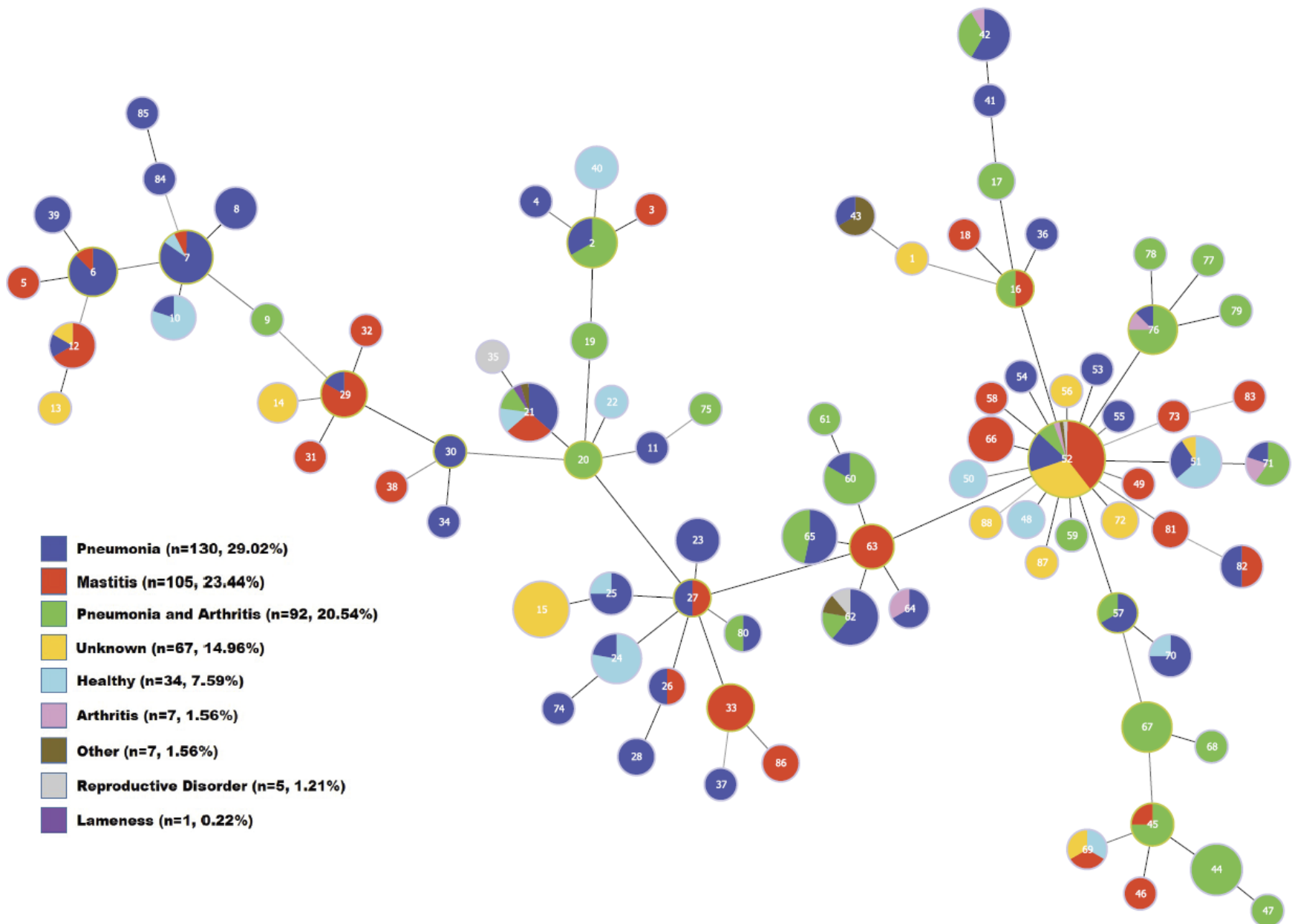


Fig. S8. Minimum spanning tree depicting evolutionary relationships among the 88 STs defined by the revised PubMLST scheme for *M. bovis* found among the 448 isolates included in this study. STs are indicated by the numeral in each circle. Circles, or portions thereof, are sized in proportion to the number of isolates with the indicated ST (log scale) and colored in accordance with the clinical status of the animal of origin, as specified in the color key.

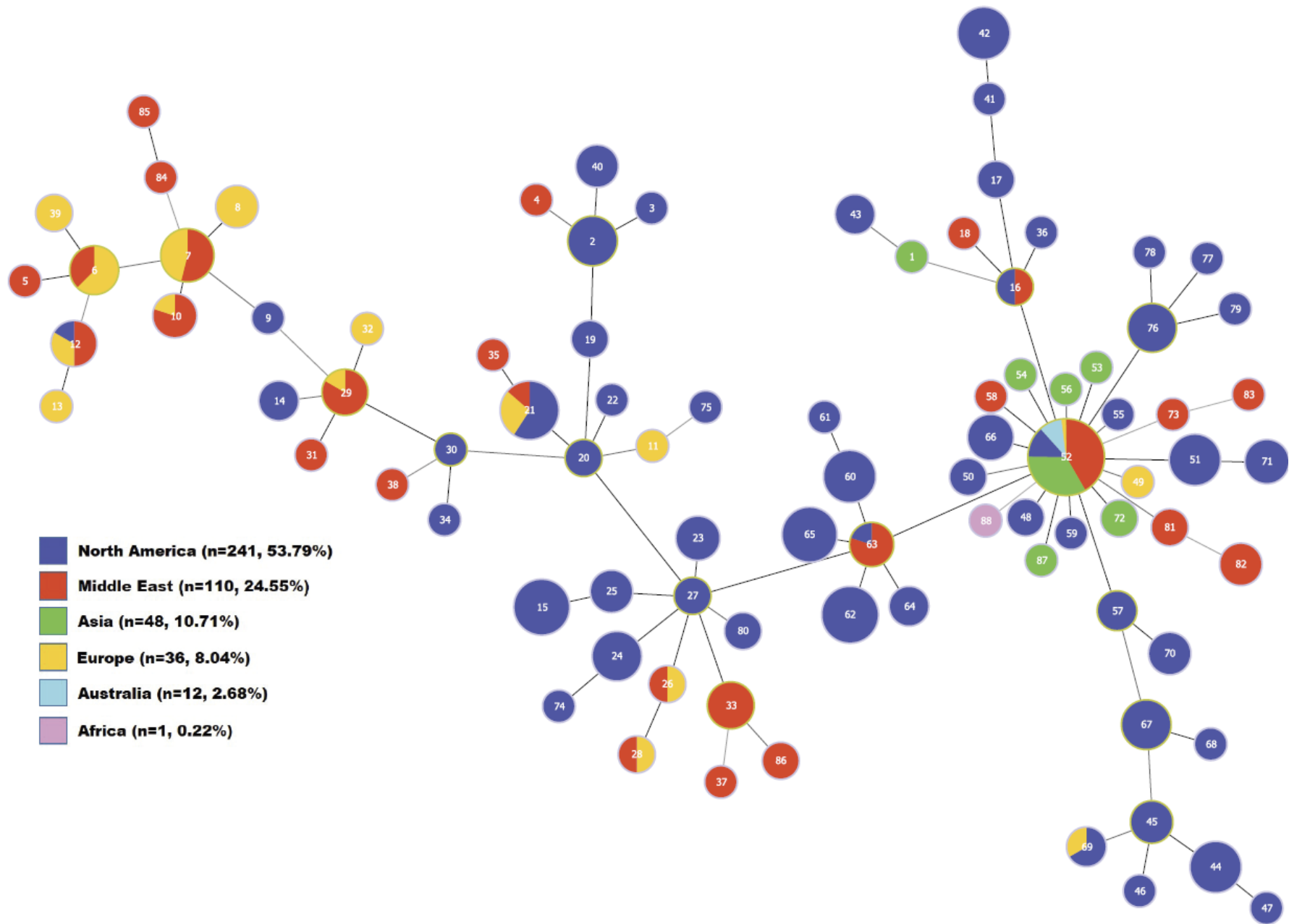


Fig. S9. Minimum spanning tree depicting evolutionary relationships among the 88 STs defined by the revised PubMLST scheme for *M. bovis* found among the 448 isolates included in this study. STs are indicated by the numeral in each circle. Circles, or portions thereof, are sized in proportion to the number of isolates with the indicated ST (log scale) and colored in accordance with the geographic origin, as specified in the color key.

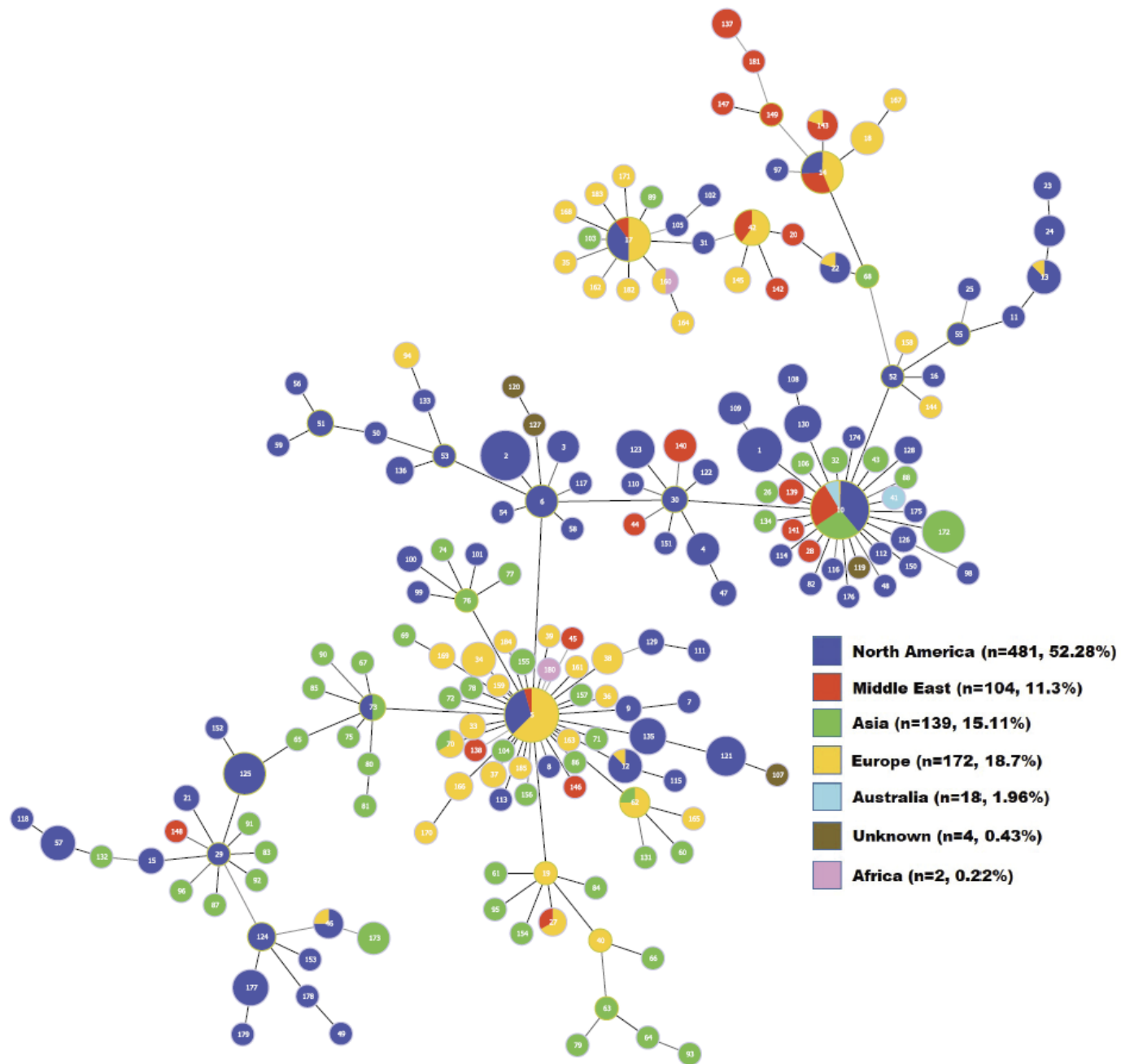


Fig. S10. Minimum spanning tree depicting evolutionary relationships among the 185 STs defined by the original PubMLST scheme for *M. bovis* found among the 920 isolates thus far submitted to the PubMLST database. STs are indicated by the numeral in each circle. Circles, or portions thereof, are sized in proportion to the number of isolates with the indicated ST (log scale) and colored in accordance with the geographic origin, as specified in the color key.

References

1. Register KB, Thole L, Rosenbush RF, Minion FC. 2015. Multilocus sequence typing of *Mycoplasma bovis* reveals host-specific genotypes in cattle versus bison. *Vet Microbiol* 175:92-98.
2. Register KB, Jelinski MD, Waldner M, Boatwright WD, Anderson TK, Hunter DL, Hamilton RG, Burrage P, Shury T, Bildfell R, Wolff PL, Miskimins D, Derscheid RJ, Woodbury MR. 2019. Comparison of multilocus sequence types found among North American isolates of *Mycoplasma bovis* from cattle, bison, and deer, 2007-2017. *J Vet Diagn Invest* 1:899-904.
3. Morimoto M, Kenri T, Ohmori T, Teshima K, Shibuya K, Sasakawa C, Suzuki M. 2019. Complete genome sequence of *Mycoplasma bovis* strain KG4397, isolated from cattle in Japan. *Microbiol Resour Announc* 8.
4. Rosales RS, Churchward CP, Schnee C, Sachse K, Lysnyansky I, Catania S, Iob L, Ayling RD, Nicholas RA. 2015. Global MLST analysis of *Mycoplasma bovis* isolates reveals two main population clusters. *J Clin Microbiol.* 53:789-794.