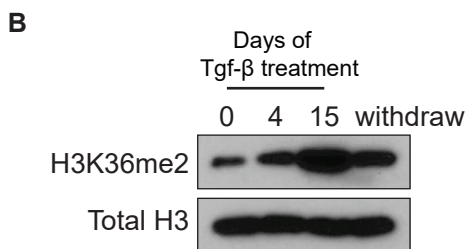
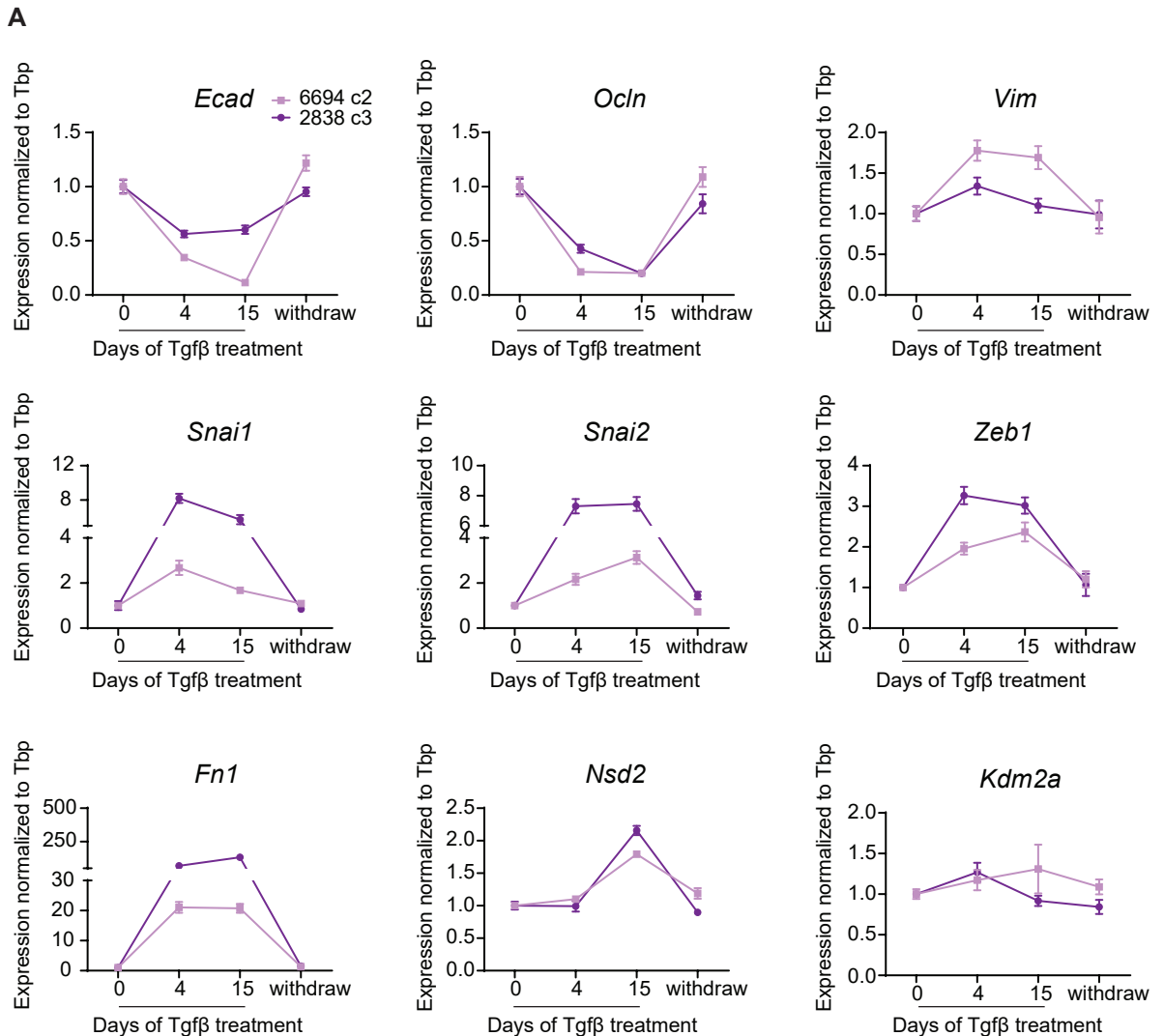


Supplementary Figure S10



Supplementary Figure S10. Tgf- β -induced transcriptional and epigenetic changes are reversible. (A) Relative mRNA expression of epithelial, mesenchymal, and epigenetic genes determined by qPCR in 2 cell lines treated with Tgf- β for 0, 4, and 15 days, followed by withdrawal of Tgf- β for 15 days. Error bars indicate SEM.

(B) Western blot of acid-extracted histones from a cell line treated with Tgf- β for 0, 4, and 15 days, followed by withdrawal of Tgf- β for 15 days.