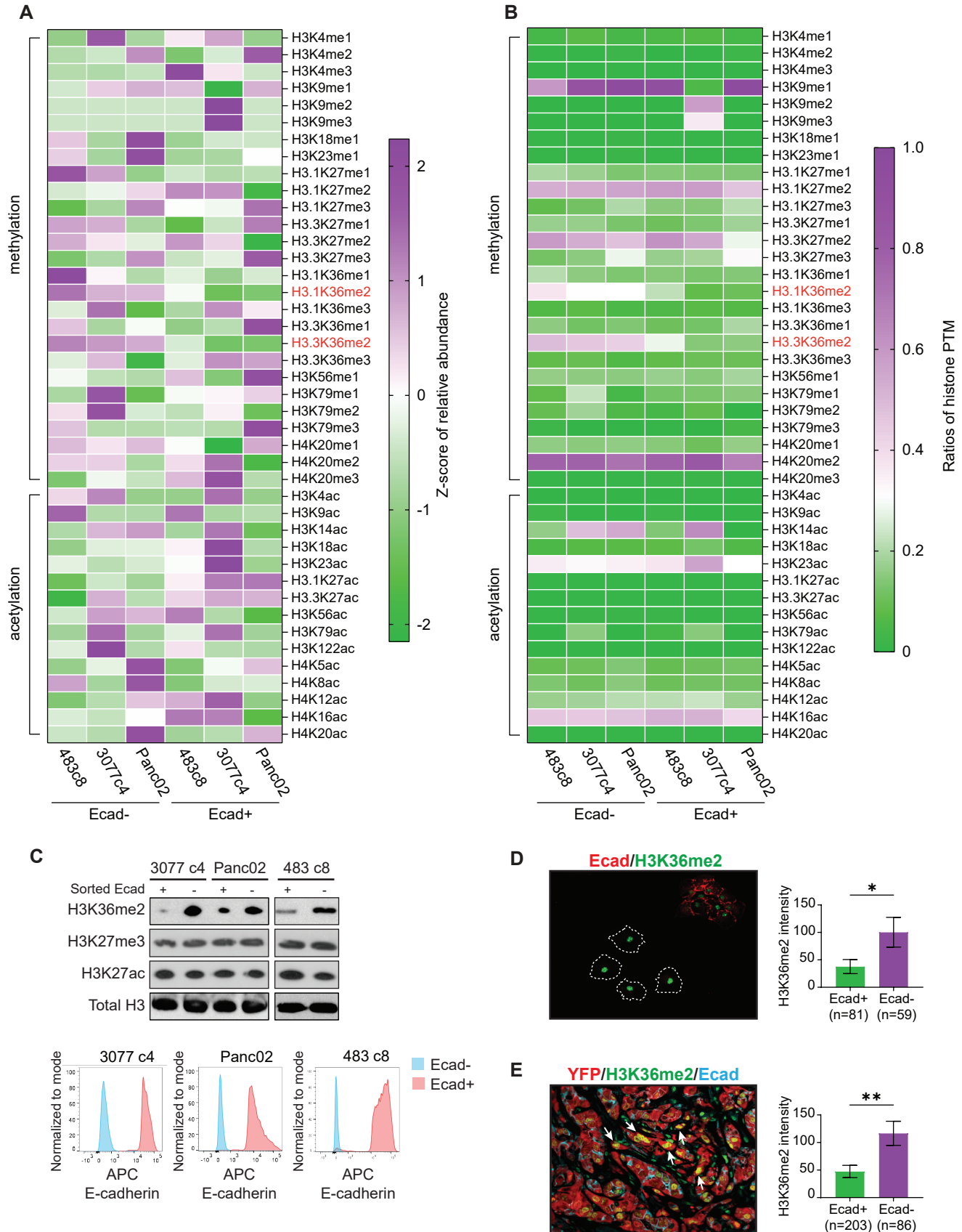


Supplementary Figure S8



Supplementary Figure S8. Higher global levels of H3K36me2 are found in sorted Ecad- cells.

(A-B) Heatmaps of z-scores **(A)** or ratios **(B)** of mass spectrometry-derived histone H3 and H4 single PTM relative abundances of sorted Ecad⁺ and Ecad⁻ subpopulations with triplicates. Cell lines used are indicated.

(C) Western blot of acid-extracted histones from sorted Ecad⁺ and Ecad⁻ cells of 3 clonal cell lines. Flow histograms confirming purity of each sorted subpopulation are shown below.

(D) Representative IF image (left) and ImageJ-based quantification of H3K36me2 fluorescence intensities (right) of cultured cells from a KPCY-derived cell line (n=4 cell lines) co-stained for E-cadherin (red) and H3K36me2 (green). White dotted lines outline cell membranes. Total number of cells used in the analysis are indicated. Error bars indicate SEM. p-value is Holm-Sidak corrected.

(E) Representative IF image (left) and ImageJ-based quantification of H3K36me2 fluorescence intensities (right) of a KPCY tumor (n=5 tumors, 40 fields examined) co-stained for YFP (red), E-cadherin (cyan), and H3K36me2 (green). White arrow indicates a YFP⁺ tumor cell that has delaminated from epithelial structures and has lost surface Ecad staining. Total number of cells used in the analysis are indicated. Error bars indicate SEM. p-value is Holm-Sidak corrected.