

Supplementary Information

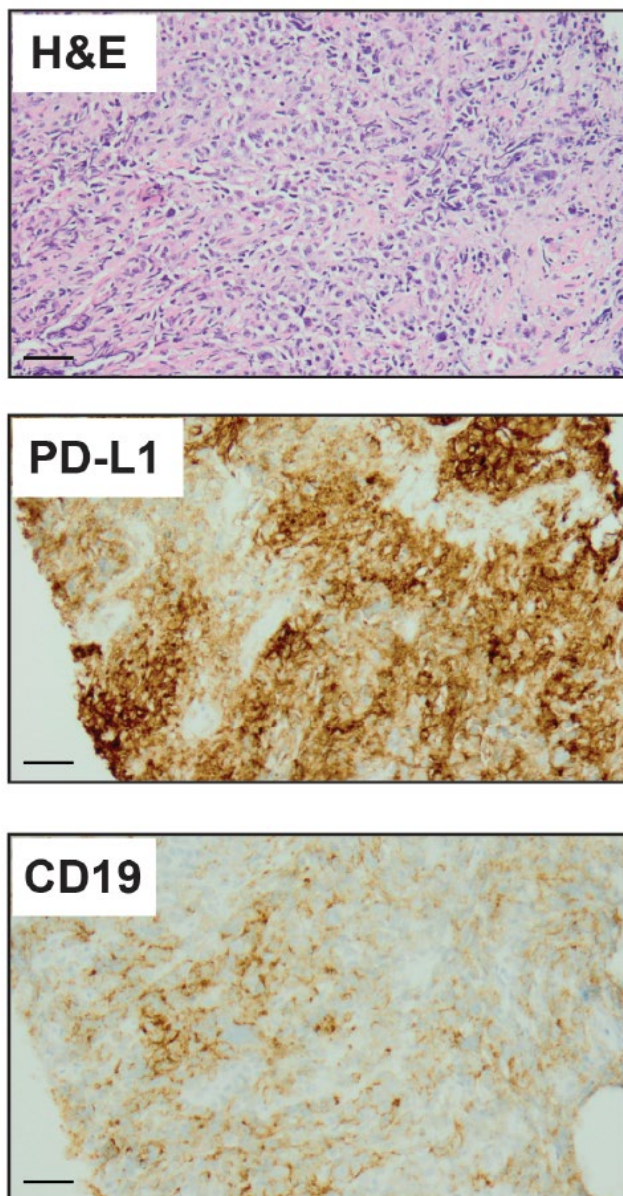


Figure S1. Retrospective analysis of tumor pretreatment PD-L1 and CD19 expression. H&E (top panel), anti-PD-L1 (middle panel), and anti-CD19 (bottom panel) immunohistochemical staining of the patient's pretreatment tumor biopsy collected on day -33. Images captured using Aperio ImageScope software (Leica Biosystems, Buffalo Grove, IL) at 40× magnification. Scale bar represents 50 μ M. H&E, hematoxylin and eosin; PD-L1, programmed death-ligand 1.

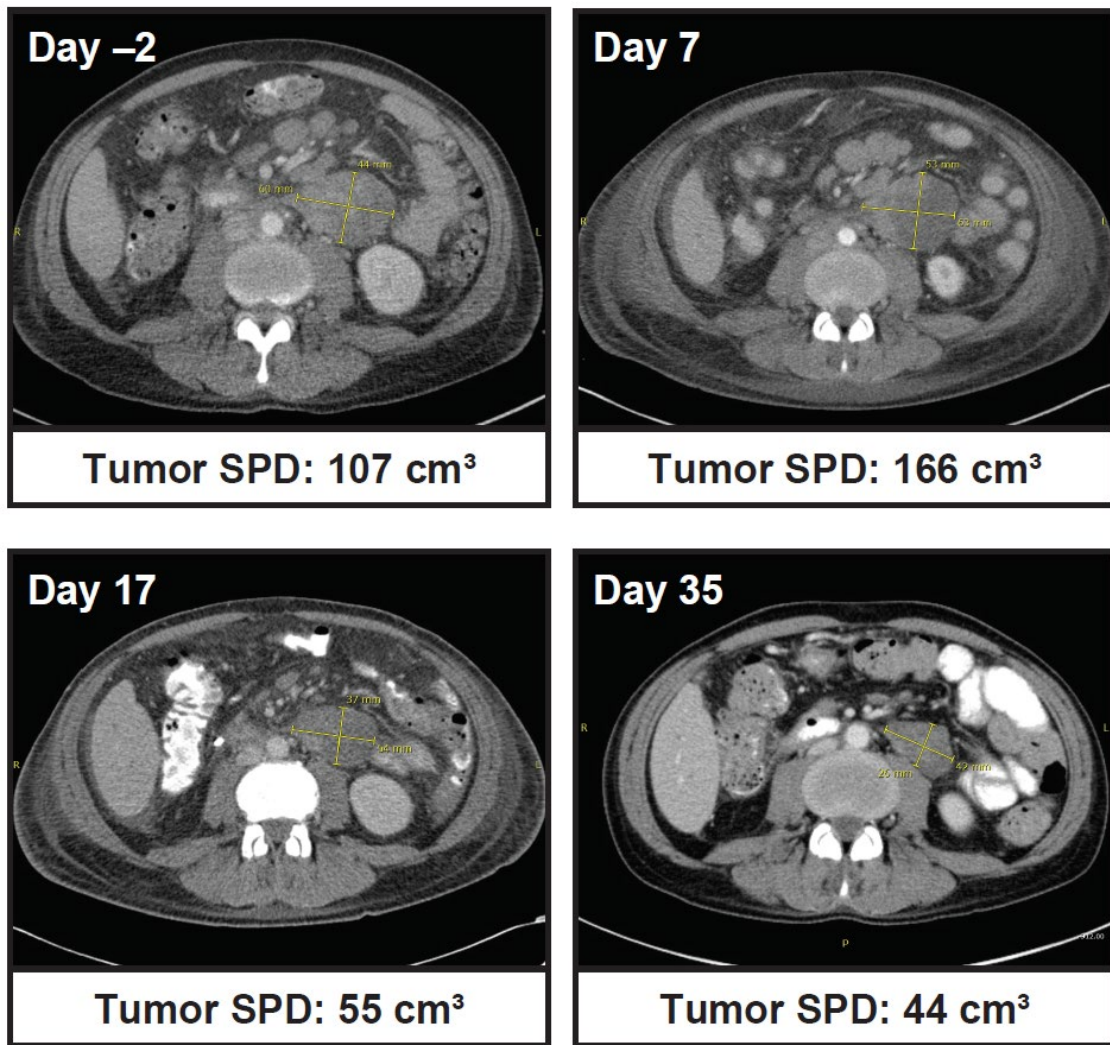
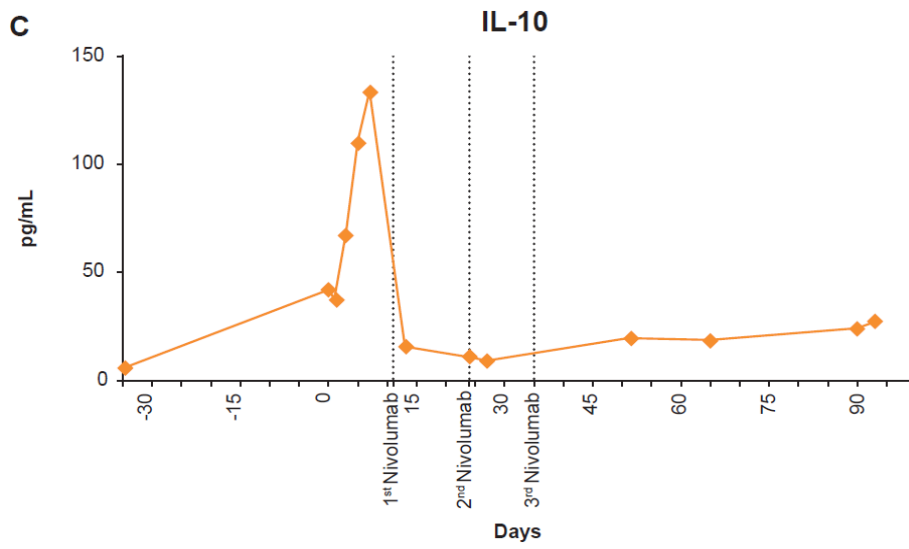
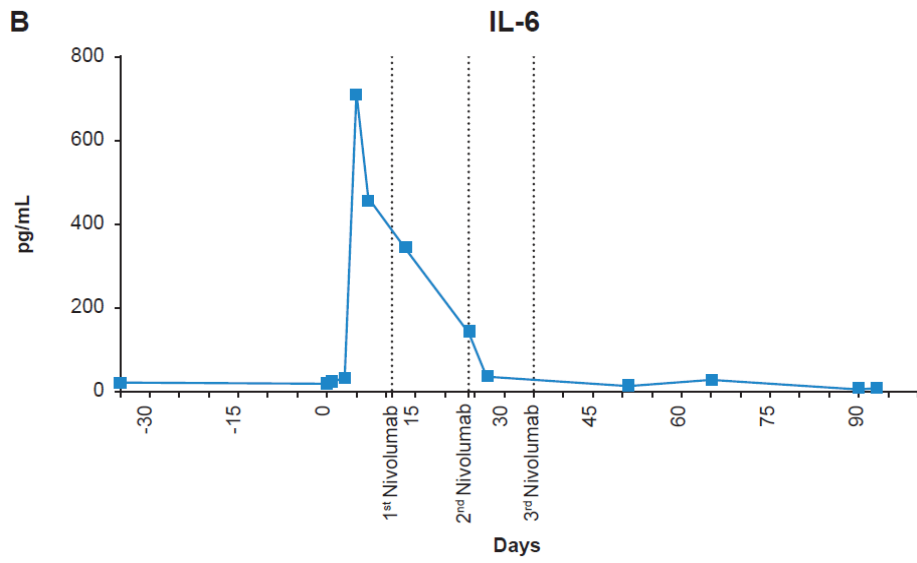
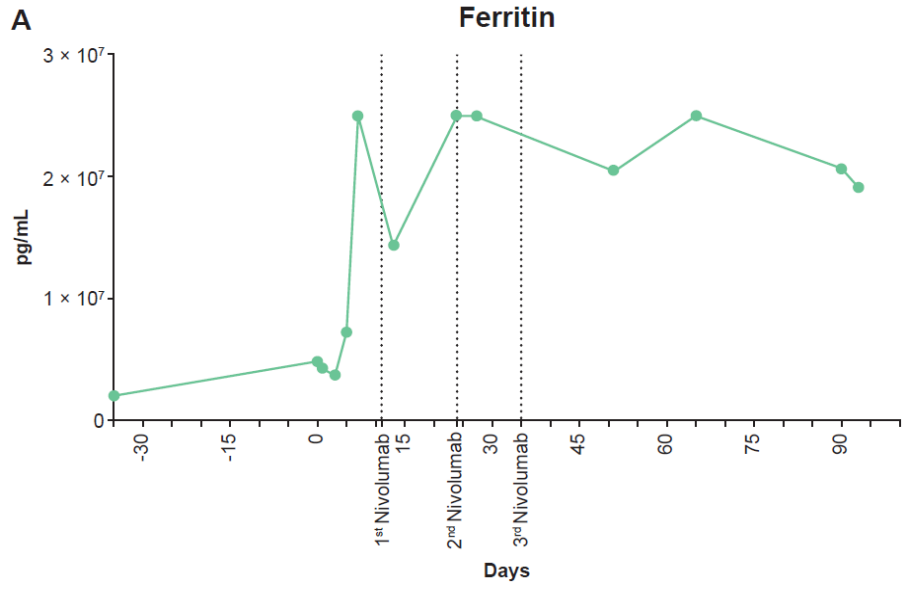


Figure S2. Representative CT scans. Serial CT images prior to axicabtagene ciloleucel infusion (day -2), at the time of clinical disease progression (day 7), 6 days after nivolumab (day 17), and 24 days after nivolumab (day 35). Tumor volume as measured by SPD of index lesions on CT scans is shown. CT, computed tomography; SPD, sum of product diameters.



B.T. HILL ET AL.

Figure S3. Cytokine levels with axi-cel and post-progression nivolumab treatment. Serum levels of (A) ferritin, (B) IL-6, and (C) IL-10 before and over the course of treatment. IL, interleukin.