

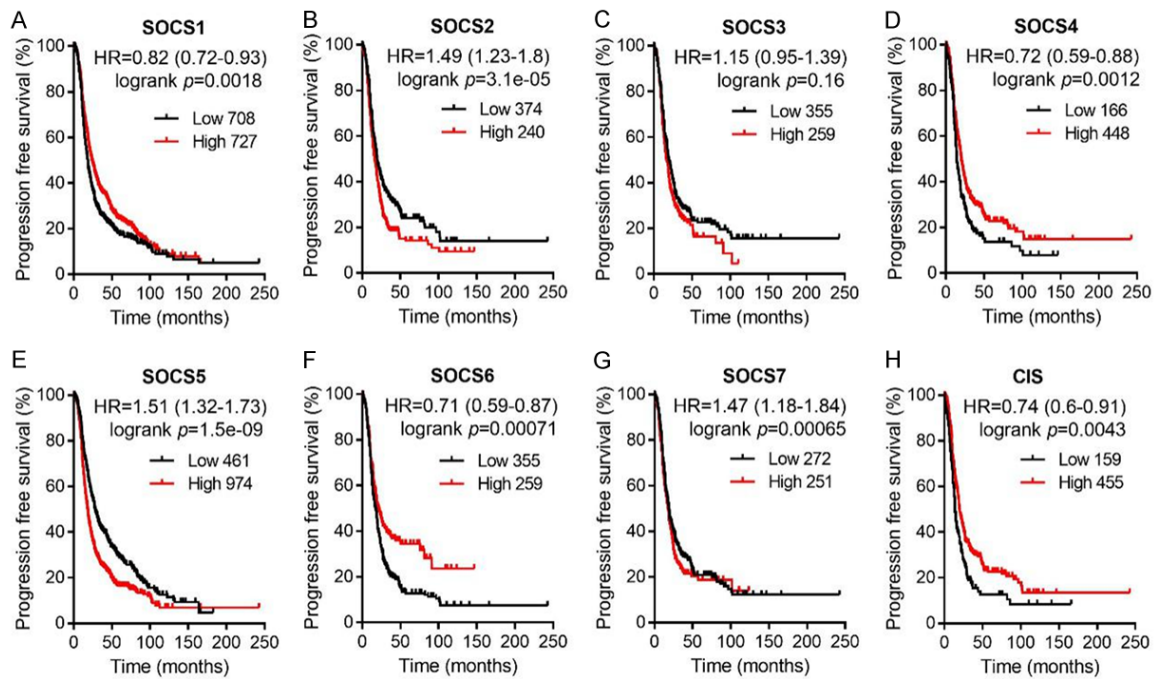
The prognostic values of SOCSs in ovarian cancer

Supplementary Table 1. The specific Affymetrix ID of each SOCS member in Kaplan-Meier plotter

Gene	Affymetrix ID
SOCS1	210001_s_at
SOCS2	232539_at
SOCS3	227697_at
SOCS4	226178_at
SOCS5	209648_x_at
SOCS6	227542_at
SOCS7	228662_at
CISH	223377_x_at

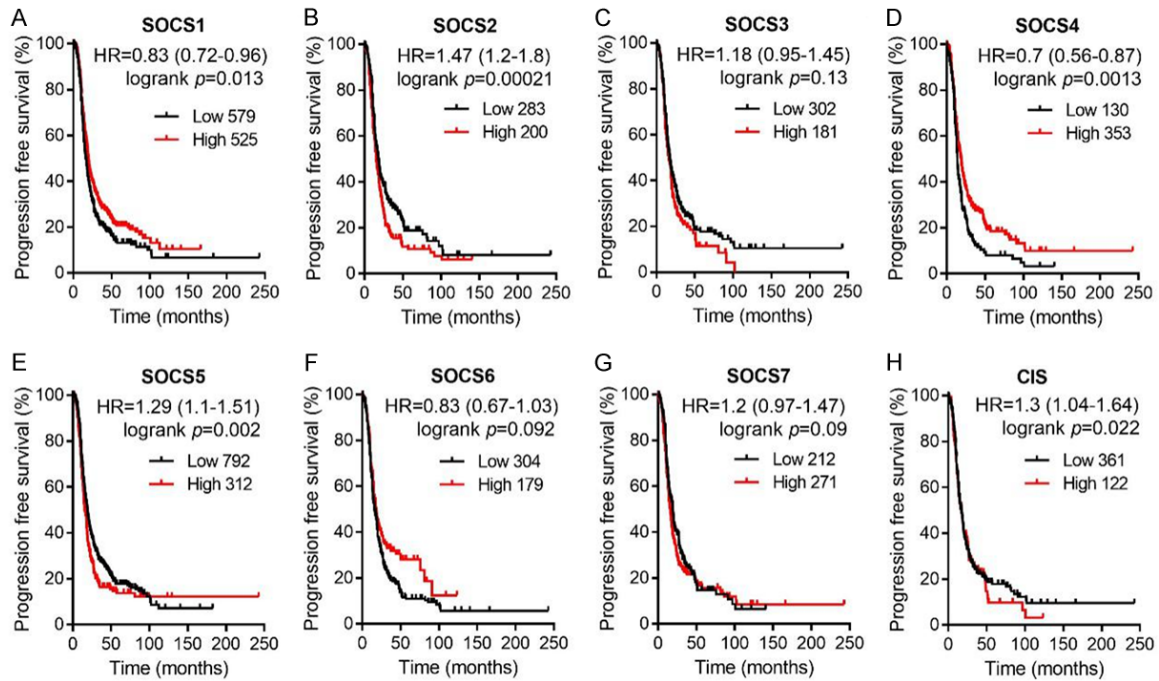
Supplementary Table 2. Protein expression patterns of each SOCS member in OC using the HPA

Gene	Antibody	High	Medium	Low	Not-detected	Total
SOCS1	CAB010355	2	6	4	0	12
SOCS2	CAB010356	2	10	0	0	12
SOCS3	CAB012220	0	4	4	3	11
SOCS4	CAB013478	1	3	0	8	12
SOCS5	CAB025510	4	5	0	3	12
SOCS6	CAB010189	0	5	7	0	12
SOCS7	HPA004475	3	0	0	8	11
CISH	HPA040812	2	3	3	4	12



Supplementary Figure 1. Progression-free survival analysis of SOCS1 (A), SOCS2 (B), SOCS3 (C), SOCS4 (D), SOCS5 (E), SOCS6 (F), SOCS7 (G), CISH (H) in OC patients using Kaplan-Meier plotter. Patients with expression above the median are indicated in red line, and patients with expressions below the median are indicated in black line. HR means hazard ratio.

The prognostic values of SOCSs in ovarian cancer



Supplementary Figure 2. Progression-free survival analysis of SOCS1 (A), SOCS2 (B), SOCS3 (C), SOCS4 (D), SOCS5 (E), SOCS6 (F), SOCS7 (G), CIS (H) in OSC patients using Kaplan-Meier plotter. Patients with expression above the median are indicated in red line, and patients with expressions below the median are indicated in black line. HR means hazard ratio.