

Supporting Information:

Comprehensive characterization of bovine milk lipids: Triglycerides

Zhiqian Liu^{1*}, Cheng Li^{1,2}, Jennie Pryce^{1,2} and Simone Rochfort^{1,2}

¹Agriculture Victoria Research, AgriBio, 5 Ring Road, Bundoora, Victoria 3083, Australia

²School of Applied Systems Biology, La Trobe University, Bundoora, Victoria 3083,
Australia

*Corresponding author: Zhiqian.liu@agriculture.vic.gov.au

Tel: +61 3 9032 7134

Table S-2: Linearity and relative response of TAG standards

TAG group	Linear regression	R ²
TAG 24:0	Y = 3003169x	0.9999
TAG 30:0	Y = 3410415x	1.0000
TAG 36:0	Y = 3287638x	0.9980
TAG 42:0	Y = 2768783x	0.9966
TAG 45:0	Y = 2768937x	0.9975
TAG 48:0	Y = 2568391x	0.9976
TAG 54:0	Y = 2547987x	0.9926
TAG 54:3	Y = 2186591x	0.9891
TAG 60:0	Y = 2299453x	0.9998

Y: peak area ($\times 10^6$); x: concentration (mg/mL).

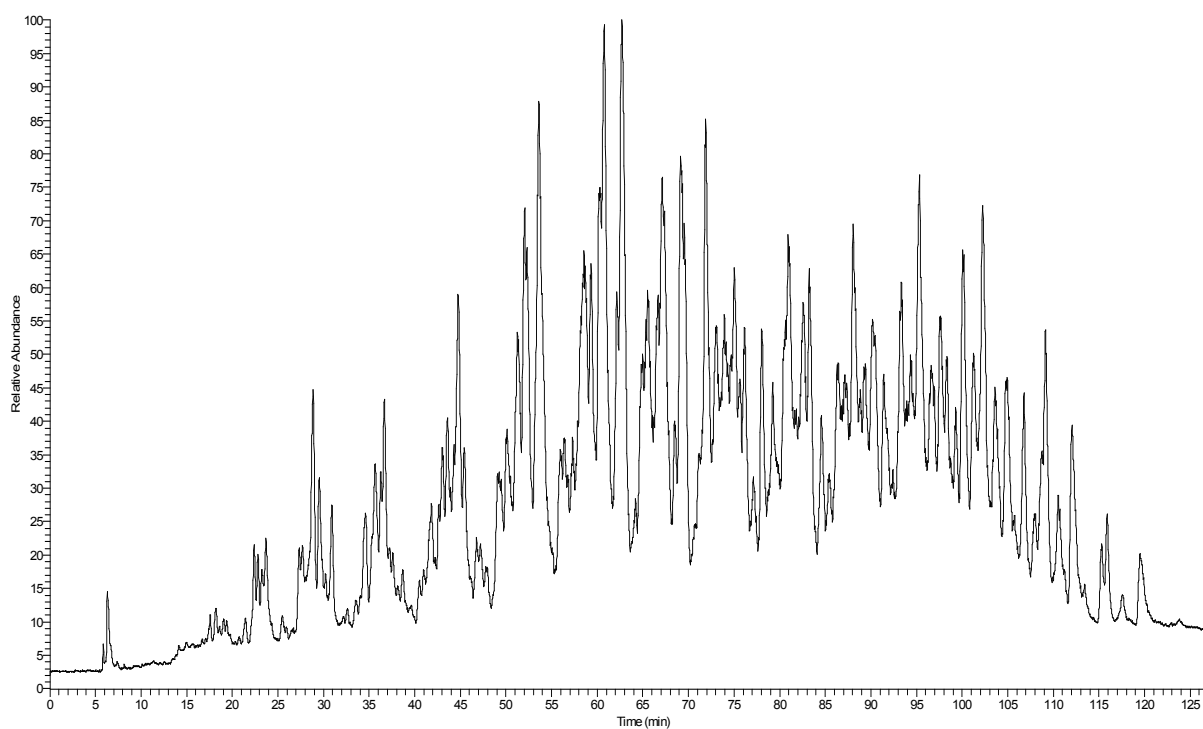


Figure S-1: Non-Aqueous-RP-LC-MS profile of bovine milk triglycerides (total ion chromatogram)