

Title

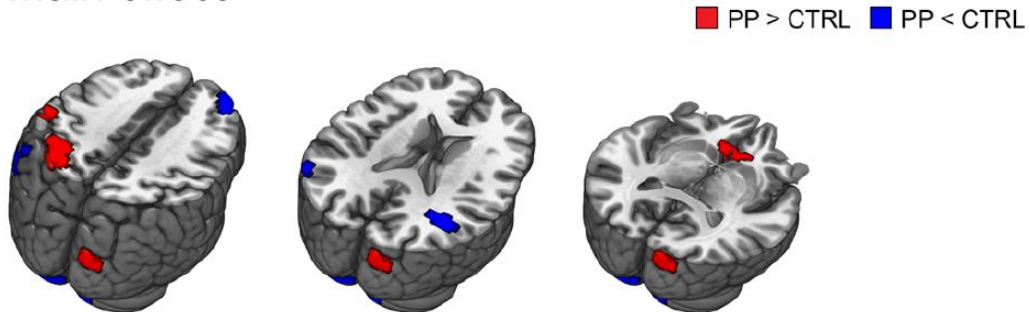
Altered neural substrates within cognitive networks of postpartum women during working memory process and resting-state

Authors

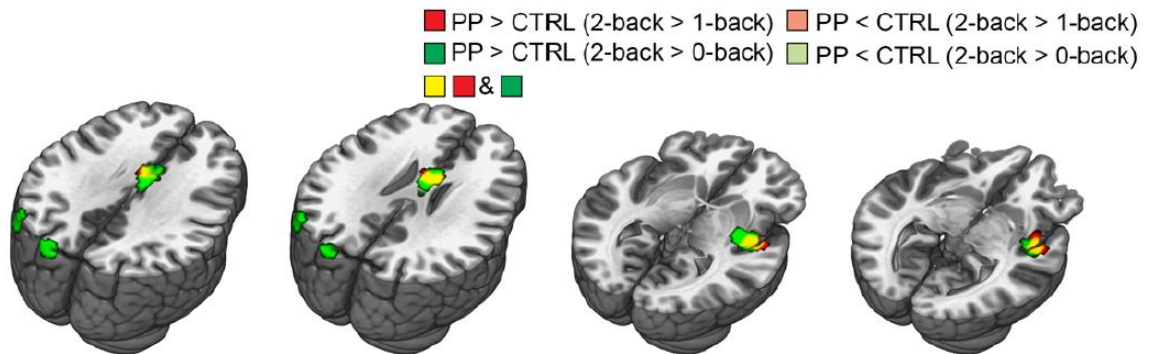
Yunjin Bak, Yoonjin Nah, Sanghoon Han, Seung-Koo Lee, Na-Young Shin*

Supplementary Information

A. Main effect



B. Interaction effect



Supplementary Figure S1. n-back task-based fMRI activation analysis results after BDI, CFQ, and number of awakening were included as covariates. **A.** Main effects revealed by 2 (group: PP vs. CTRL) x 3 (task: 0-back vs. 1-back vs. 2-back) full factorial analysis. **B.** Interaction effects revealed by 2 (group: PP vs. CTRL) x 3 (task: 0-back vs. 1-back vs. 2-back) full factorial analysis. Abbreviations: BDI, Beck Depression Inventory; CFQ, Cognitive Failure Questionnaire; CTRL, control group, PP: postpartum group.

