

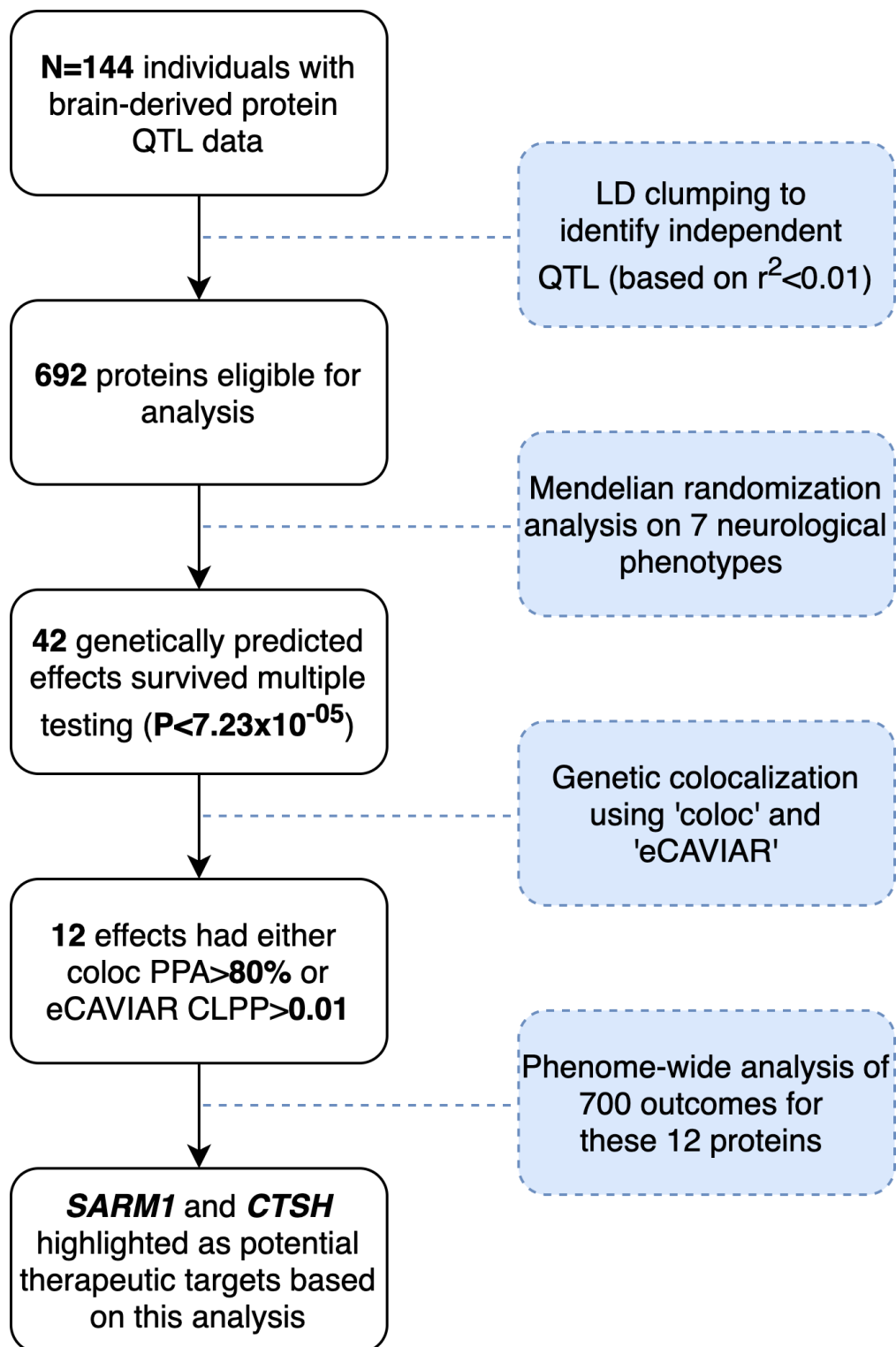
The American Journal of Human Genetics, Volume 106

Supplemental Data

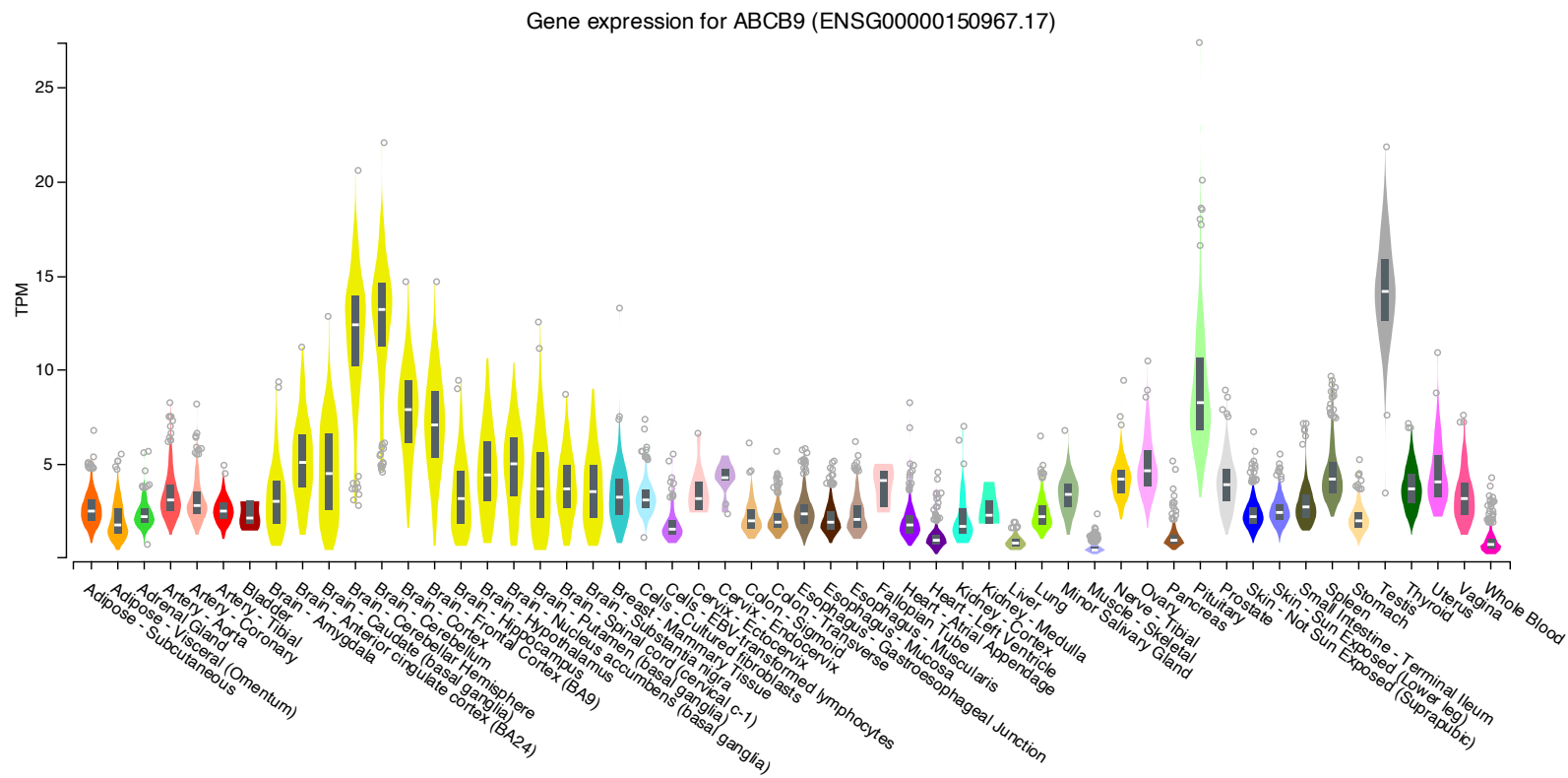
**Characterizing the Causal Pathway for Genetic
Variants Associated with Neurological Phenotypes
Using Human Brain-Derived Proteome Data**

Nelson K. Kibinge, Caroline L. Relton, Tom R. Gaunt, and Tom G. Richardson

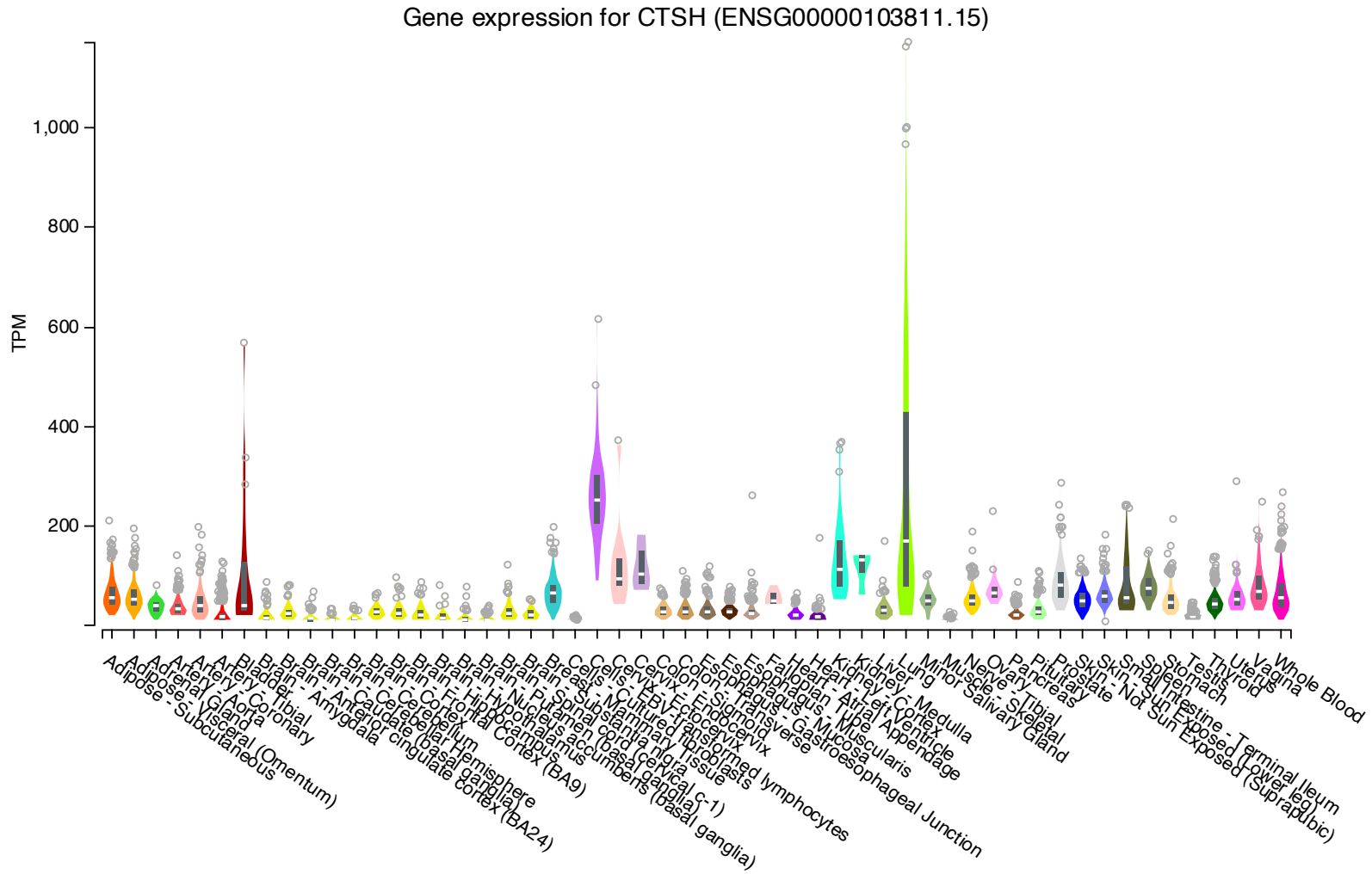
Supplementary Figure 1 – A flowchart of the analysis pipeline for this study and key results



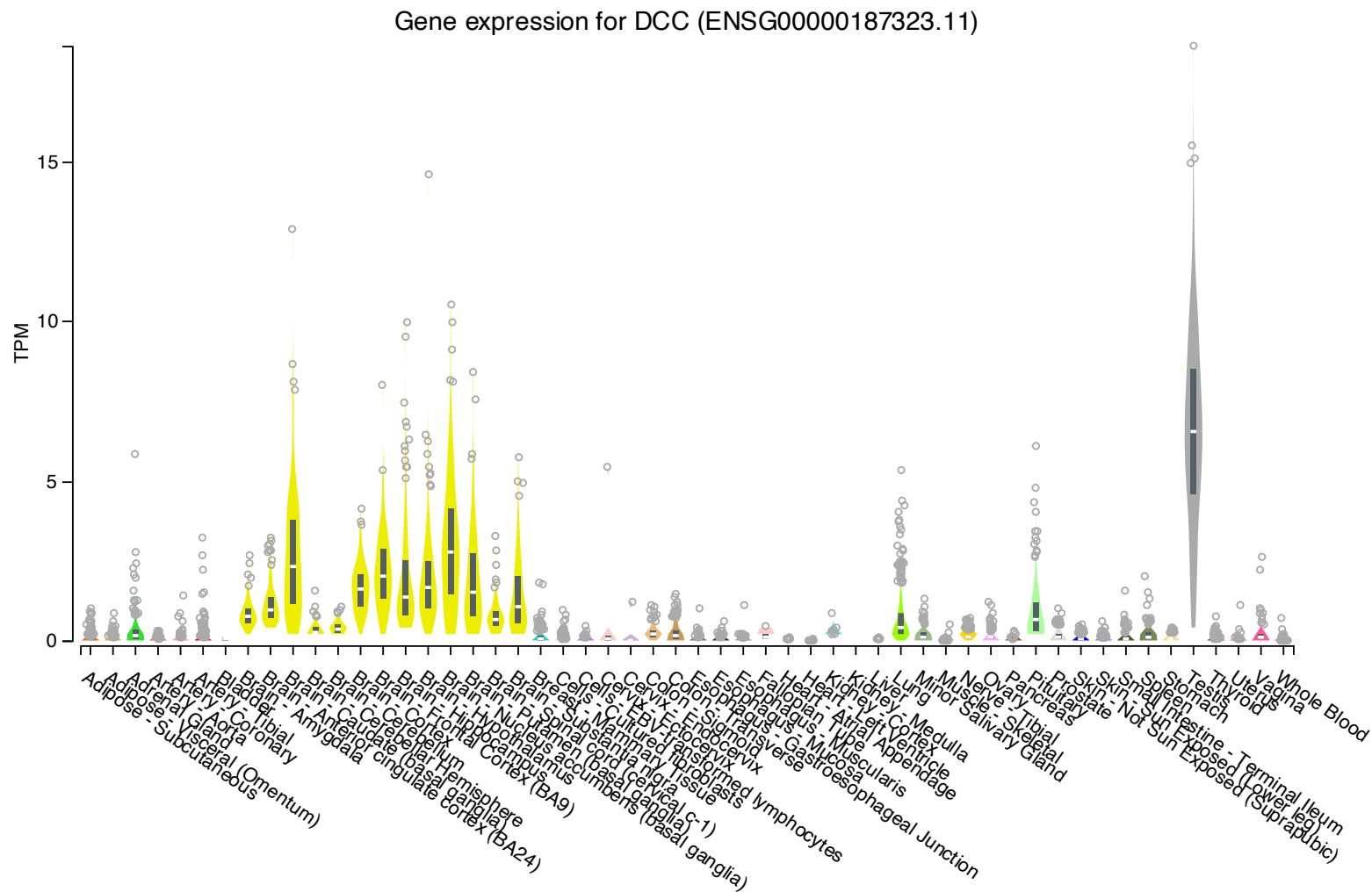
Supplementary Figure 2 – Gene expression profile for *ABCB9* across 54 tissue types in the GTEx project



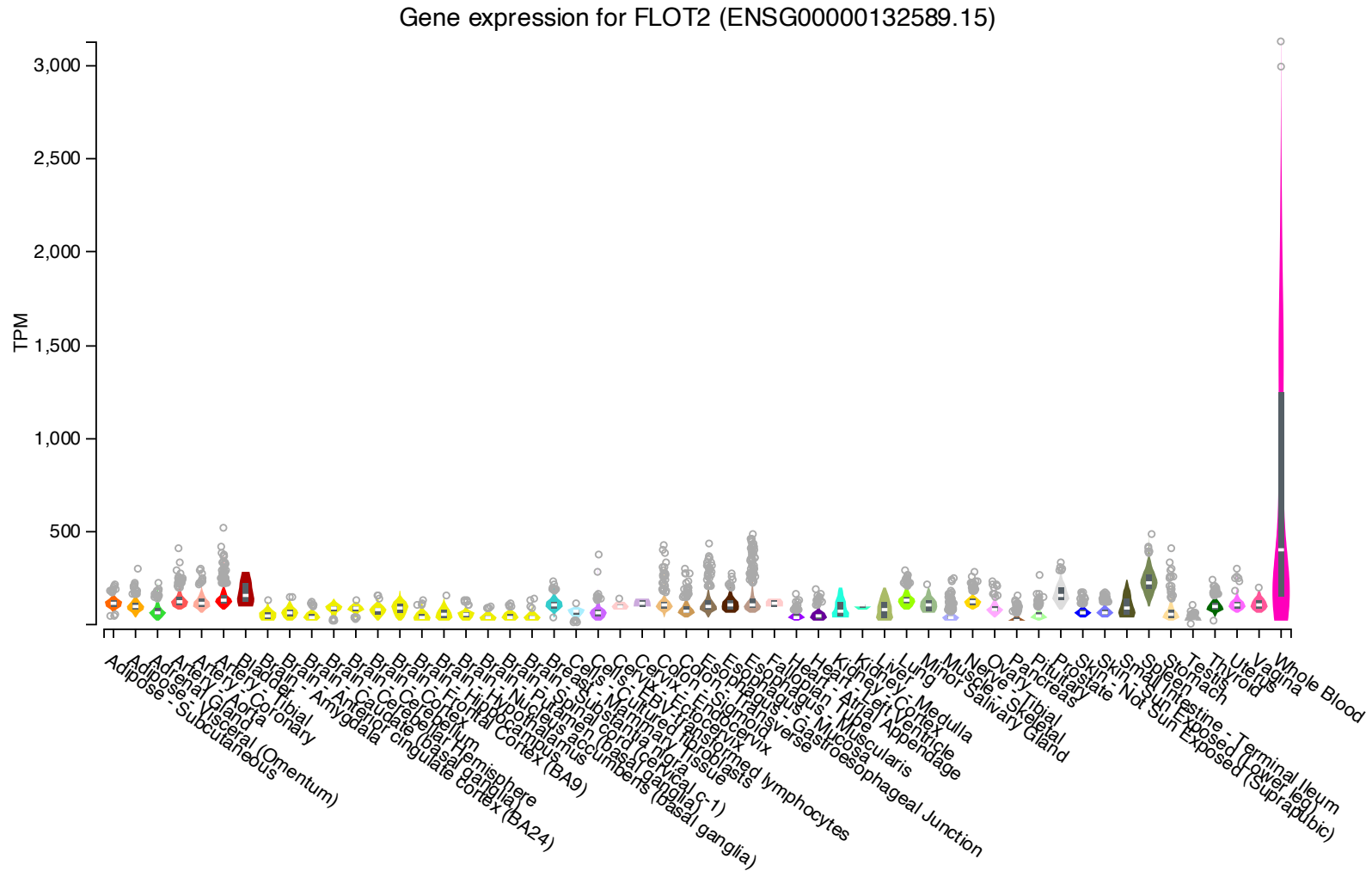
Supplementary Figure 3 – Gene expression profile for *CTSH* across 54 tissue types in the GTEx project



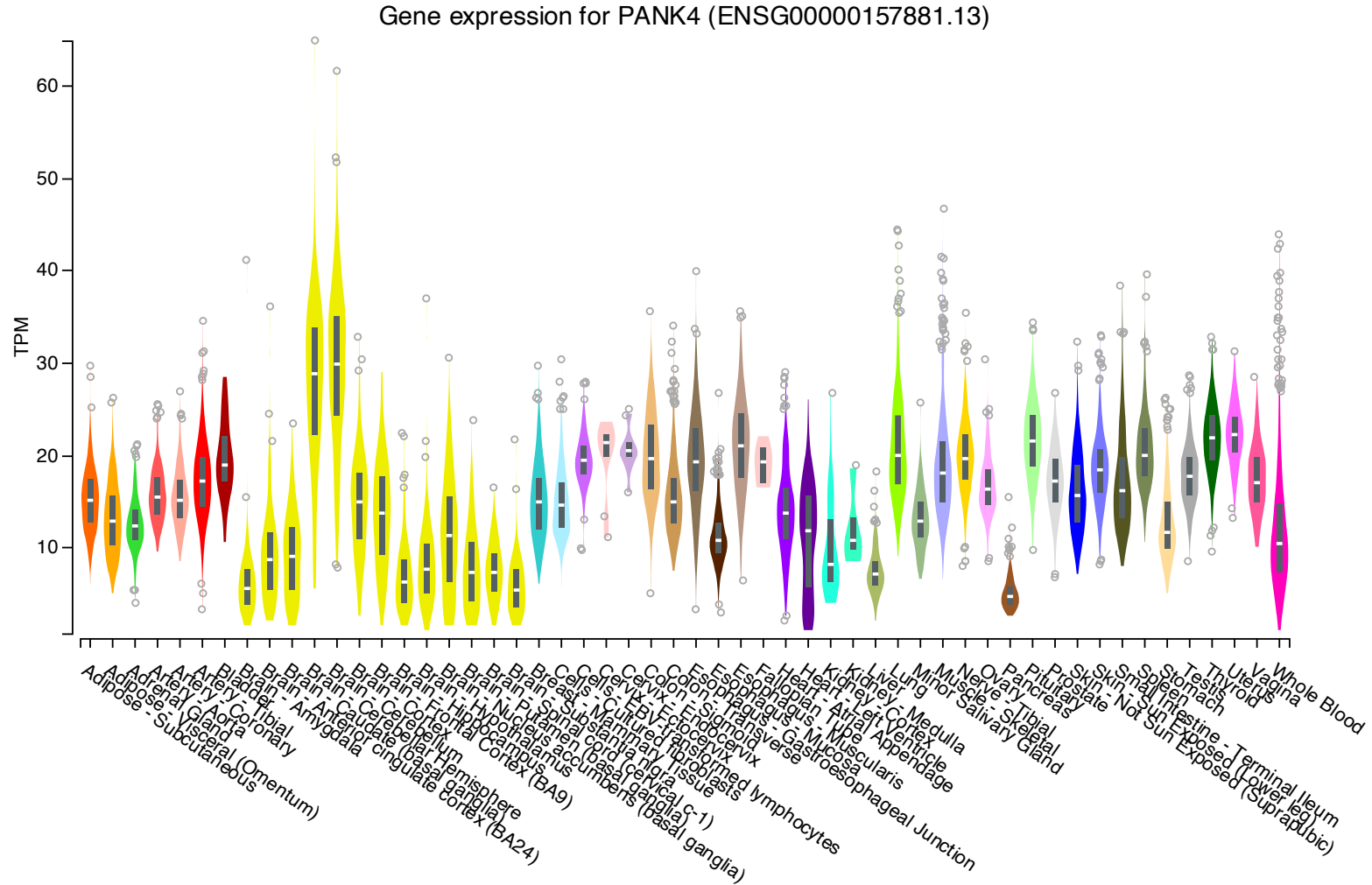
Supplementary Figure 4 – Gene expression profile for *DCC* across 54 tissue types in the GTEx project



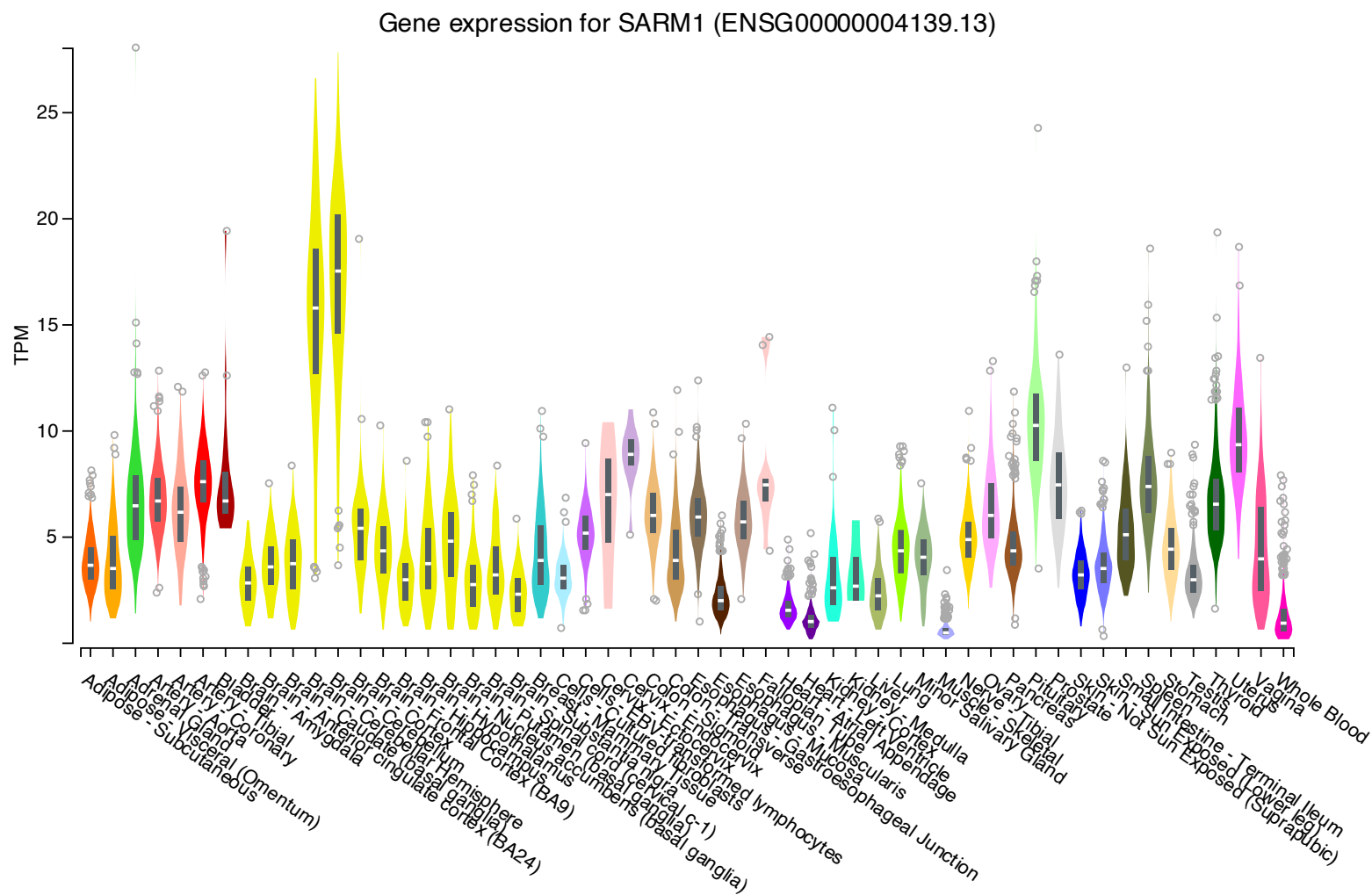
Supplementary Figure 6 – Gene expression profile for *FLOT2* across 54 tissue types in the GTEx project



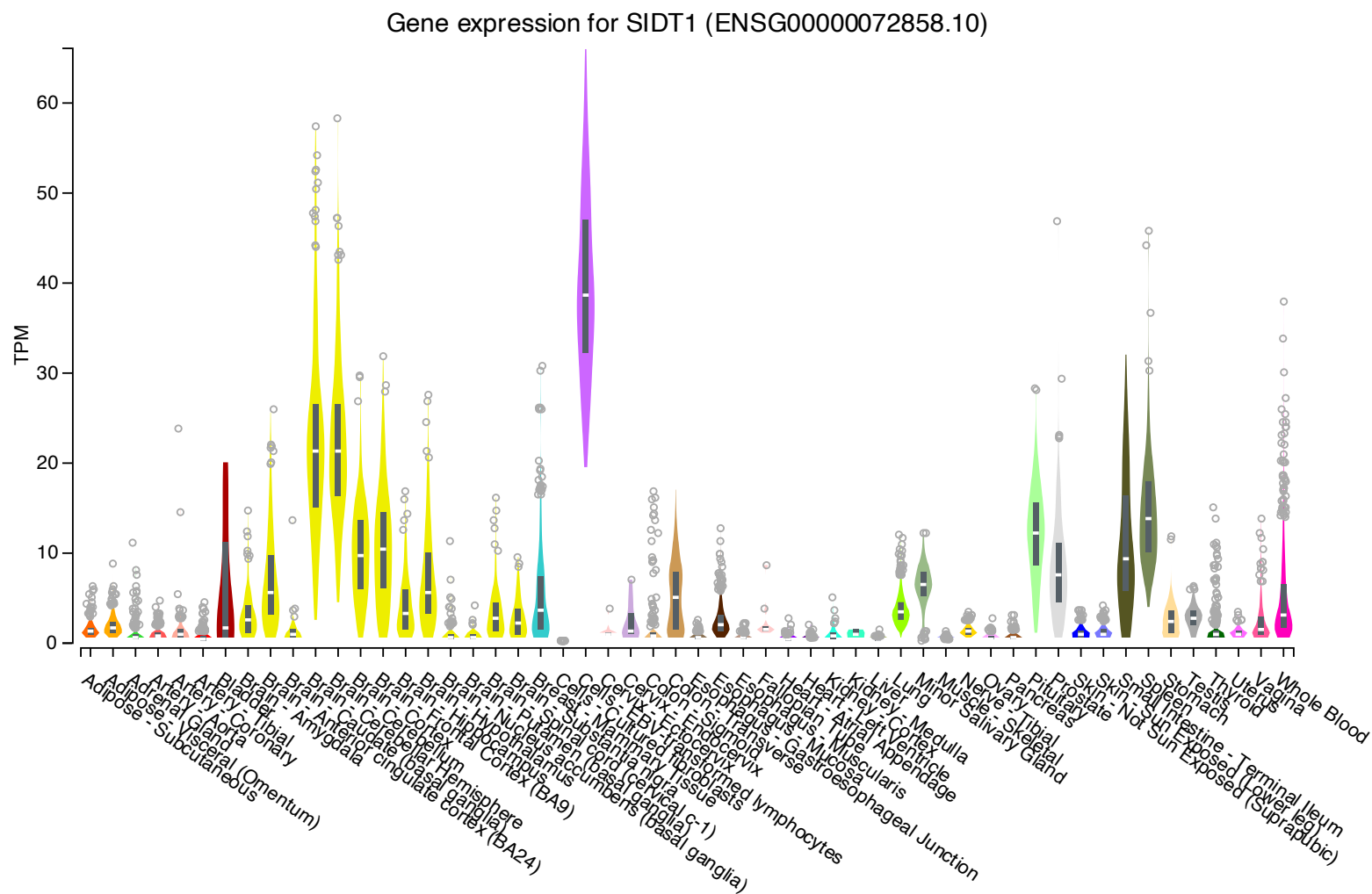
Supplementary Figure 8 – Gene expression profile for *PANK4* across 54 tissue types in the GTEx project



Supplementary Figure 11 – Gene expression profile for *SARM1* across 54 tissue types in the GTEx project



Supplementary Figure 12 – Gene expression profile for *SIDT1* across 54 tissue types in the GTEx project



Supplementary Table 1– Characteristics of genome-wide association studies of neurological and psychiatric traits

Trait/disease	Author	Year	URL
Alzheimer's disease	Jansen et al	2019	https://ctg.cncr.nl/software/summary_statistics
Amyotrophic lateral sclerosis	van Rheenen et al	2016	http://databrowser.projectmine.com/
Depression	Howard et al	2019	https://datashare.is.ed.ac.uk/handle/10283/3203
Insomnia	Jansen et al	2018	https://ctg.cncr.nl/software/summary_statistics
Intelligence	Savage et al	2018	https://ctg.cncr.nl/software/summary_statistics
Neuroticism	Elsworth et al [unpublished]	2018	mrbase.org
Schizophrenia	Ruderfer et al	2018	https://www.med.unc.edu/pgc/results-and-downloads