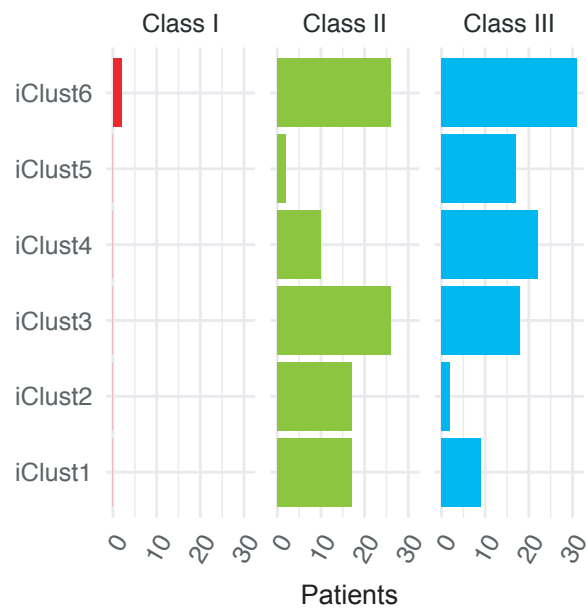
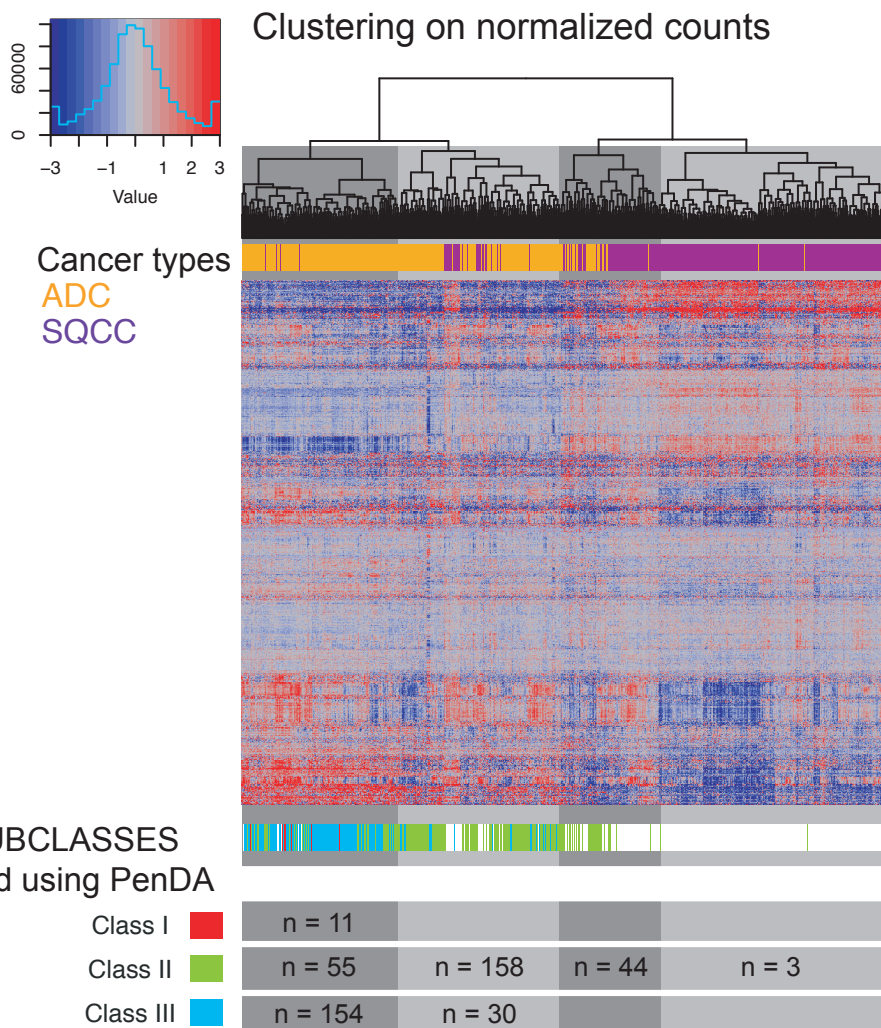


**a****b**

**S8 Fig.** (a) Graphical representation of the contingency table between ADC iCluster (The Cancer Genome Atlas Research Network) and ADC subclasses (PenDA analysis). (b) Heatmap of normalized counts matrix applied to a specific set of classifier genes ( $n = 875$ ) in TCGA non-small-cell lung cancers: ADC (orange) and SQCC (purple). Two hierarchical clusterings were performed: using Euclidean distance to sort genes and using Pearson correlation based distance to classify patients, with a complete linkage function in both cases. ADC subclasses defined by PenDA analysis (colour-coded, class I to III) are defined according to figure 6.