

Supporting material

Fig. S1. DAPI nuclear stain of a normal cell (MCF10A) and breast cancer cells (MCF MCF7, T47D, MDA-MB-231). Blue is DAPI nuclear stain, which shows that there is only one nucleus per cell.

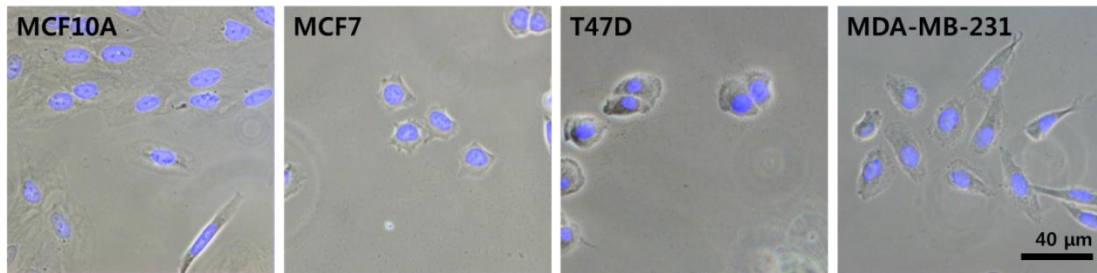


Fig. S2. Linear regression analysis between (A) Young's modulus and F-actin/area, and (B) physical adhesion and Integrin/boundary length. A high correlation can be found in adjusted R-squared of 0.92167 and 0.97347 for the relations, respectively.

