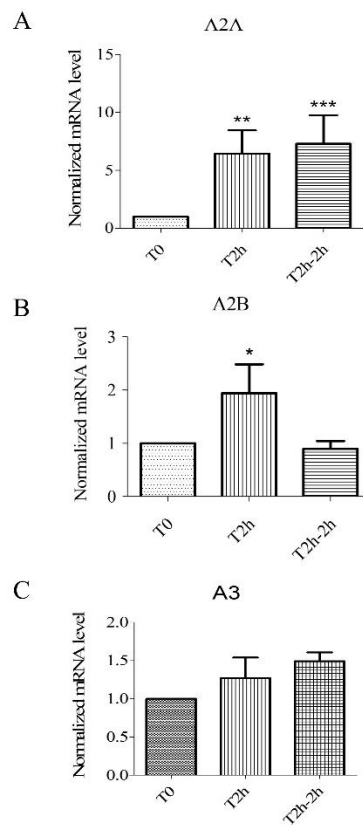


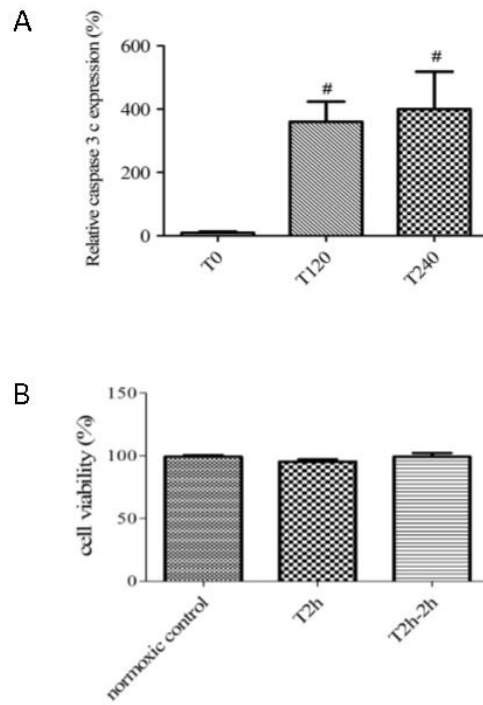
Supplementary Table 1: List of the primers used in the real time PCR experiments

Gene	Primer sequence
EEF2	Forward: GGCCCTCTTATGATGTATATTTCC
	Reverse: CTGACCTTCAGGCCAGT
A2A	Forward: TCGCCATTGACCGCTAC
	Reverse: CCAGCAGATGGCAATGAT
A2B	Forward: CATCTGTGTCCCGCTCA
	Reverse: CCACCCAGGAATGGA
A3	Forward: AGAGCTGATTGTAAGTACG
	Reverse: GACAACCTTTGGGAGCTT

Supplementary data

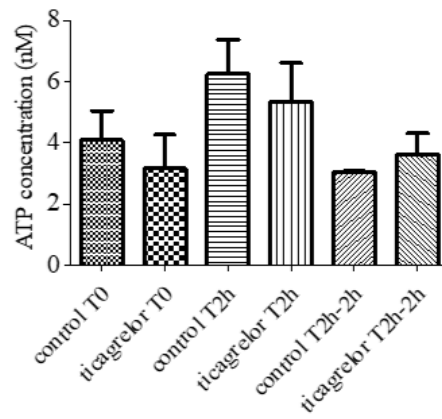


Complement of Figure 1 : mRNA expression after 2 hours of hypoxia and 2 hours of hypoxia followed by 2 hours of reoxygenation for A2A, A2B and A3 receptors.

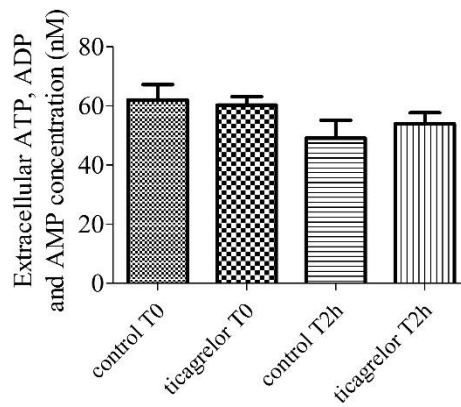


Complement of Figure 2 : Apoptosis and cell viability after 2 hours of hypoxia (T2h) followed by 2 hours of reoxygenation (T2h-2h), determined by the relative expression of cleaved caspase 3 by immunoblotting (A) and PrestoBlue assays (B). Results are expressed as means \pm sem (n = 6/group). #: p < 0.05, compared to normoxic control.

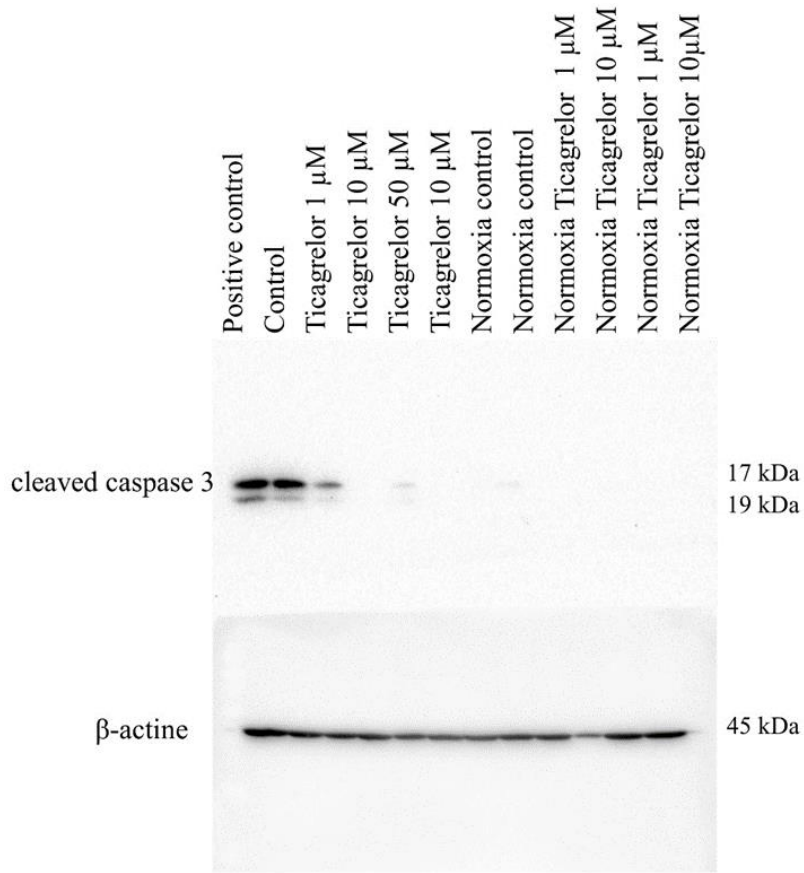
Extracellular ATP concentrations estimated using LC-HRMS assay.



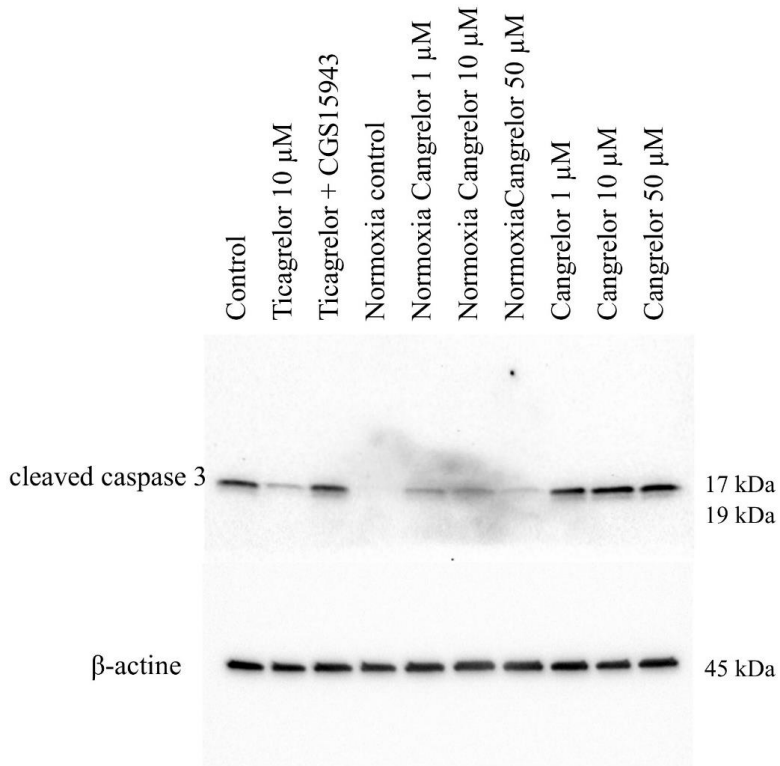
Anova $p > 0.1$ for difference between groups



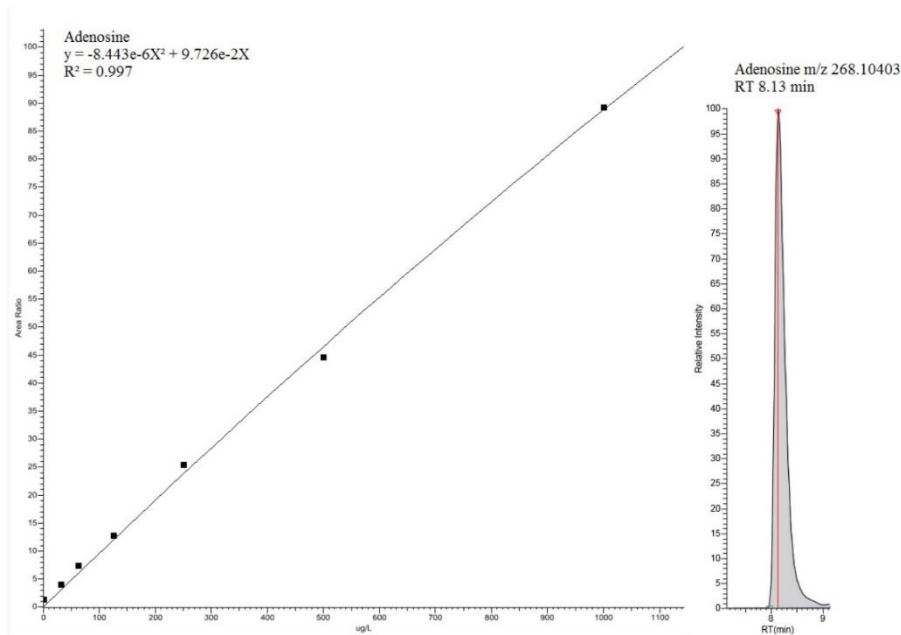
Anova $p > 0.1$ for difference between groups



Western blot related to Figure 3



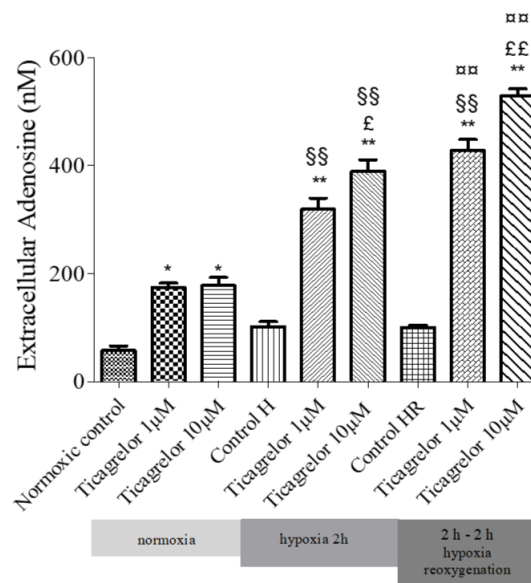
Western blot related to Figure 3



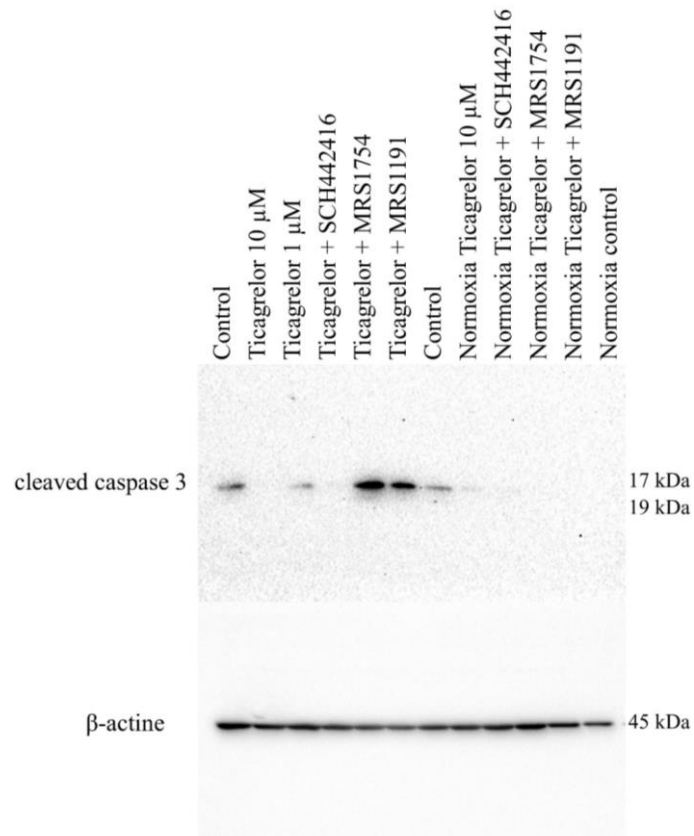
Quantification using liquid chromatography coupled with high resolution mass spectrometry :

Calibration curve of adenosine, coefficient of correlation, retention time, high-resolution masses.

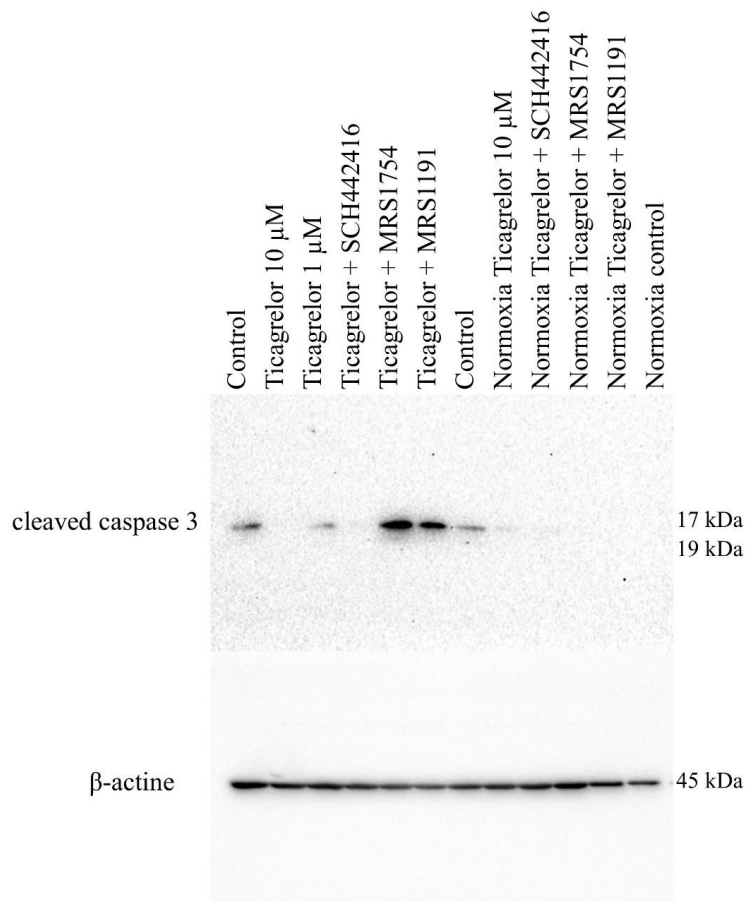
Related to Figure 4



Complement of Figure 4 : Extracellular adenosine concentration: effect of 1 µM and 10 µM ticagrelor during a 2 hours of hypoxia followed by 2 hours of reoxygenation stress in HUVECs. Extracellular adenosine concentrations are expressed in nM. Results are expressed as means ± sem (n = 6/group). *: p < 0.05, **: p < 0.01, compared to the control groups of the corresponding times; £: p < 0.05, ££: p < 0.01 compared to one µM ticagrelor for each corresponding times. §§: p < 0.01 compared to ticagrelor normoxia for each corresponding concentration. §§§: p < 0.01 compared to ticagrelor hypoxia for each corresponding concentration.



Western blot related to Figure 5



Western blot related to Figure 5