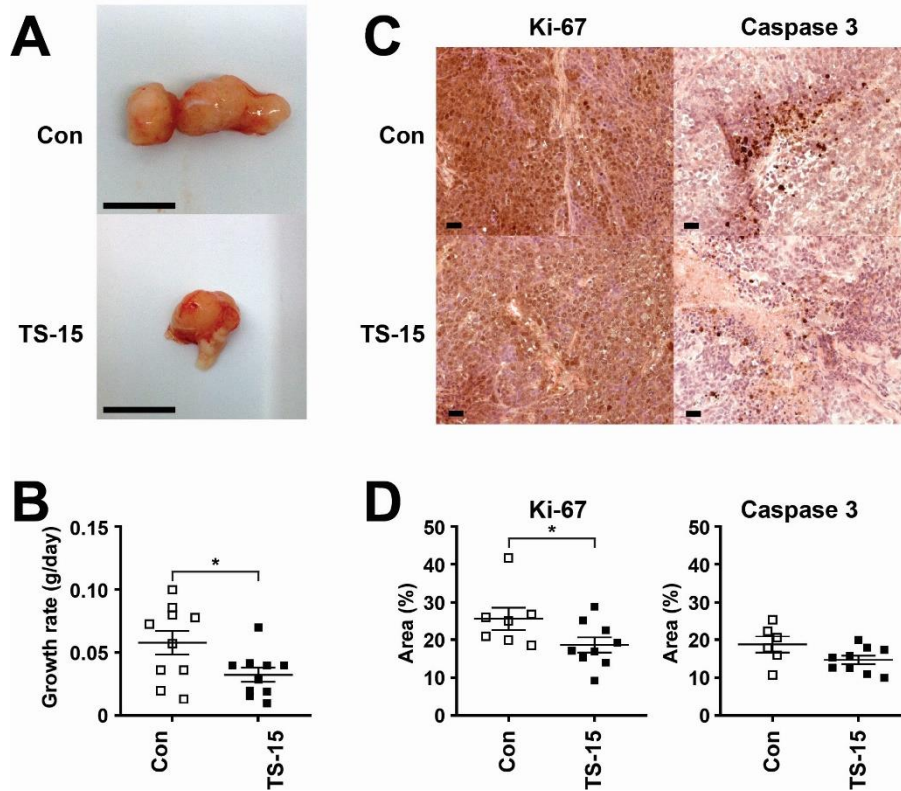


Supp. Figure 1. Quantification of co-localization of ADAMTS-15 with VCAN and versikine in prostate cancer biopsies. Extent of co-localization of ADAMTS-15 with VCAN (**A**) and ADAMTS-15 with versikine (**B**) in the indicated Gleason grade prostate cancer biopsies as determined using Mander's Overlap, showing mean and S.E.M. (* $p < 0.05$, *** $p < 0.001$, $n = 5$ Gleason 6=3+3, $n = 4$ Gleason 8=4+4, 9A=4+5 & 9B=5+4, $n = 3$ Gleason 7A=3+4 & 7B=4+3).



Supp. Figure 2. Impact of ADAMTS-15 expression on tumor growth, proliferation and apoptosis. **A-D.** Tumors harvested from intact mice injected with control (Con) and ADMATS-15-expressing (TS-15) LNCaP cells were imaged (**A**), weighed to determine relative growth rate (**B**), and sectioned for immunostaining with for Ki-67 and Caspase for imaging (**C**) and quantification of relative area of staining (**D**). Images in panel **A** (scale bar = 0.5 cm) and **C** (scale bar = 10 μ m) are from representative samples, while the graphs in panel **B** and **D** present results for tumors from individual mice, showing mean and S.E.M. (* $p < 0.05$, $n = 6-11$).