

Early-Life Conditions and Cognitive Function in Middle- and Old-Aged Chinese Adults: A Longitudinal Study

Lei Yang¹ and Zhenbo Wang^{2,*}

¹ School of Ethnology and Sociology, Minzu University of China, Beijing 100081, China; lei.yang@muc.edu.cn

² Institute of Geographic Sciences and Natural Resources Research, Chinese Academy of Sciences, Beijing 100101, China

* Correspondence: wangzb@igsnr.ac.cn

Received: 28 March 2020; Accepted: 13 May 2020; Published: date

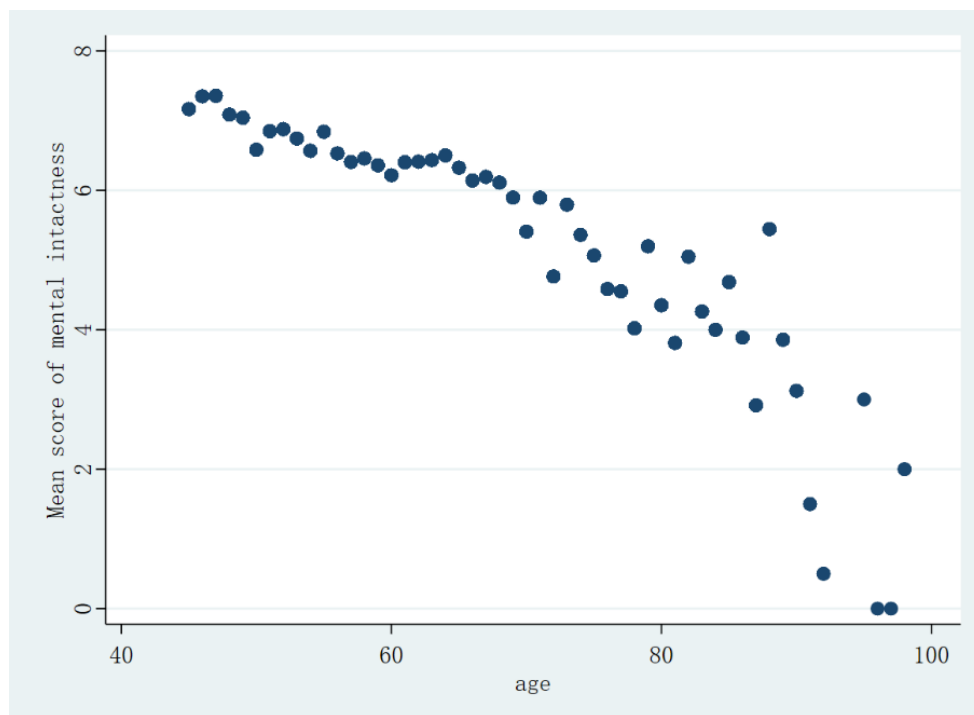


Figure S1. Correlation of age and mental intactness (mean scores) in 2011.

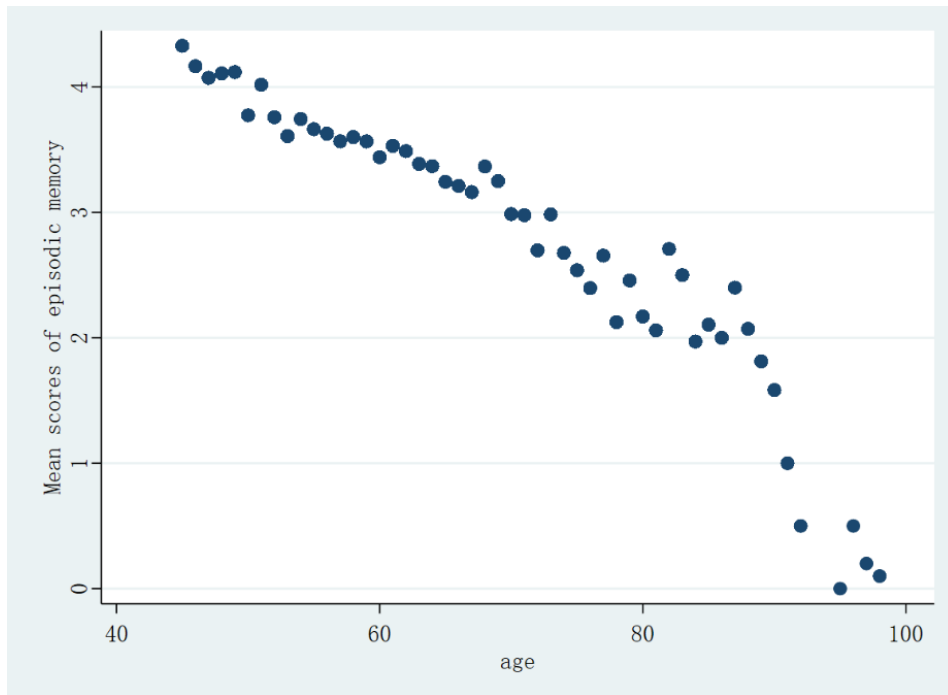


Figure S2. Correlation of age and episodic memory (mean scores) in 2011.