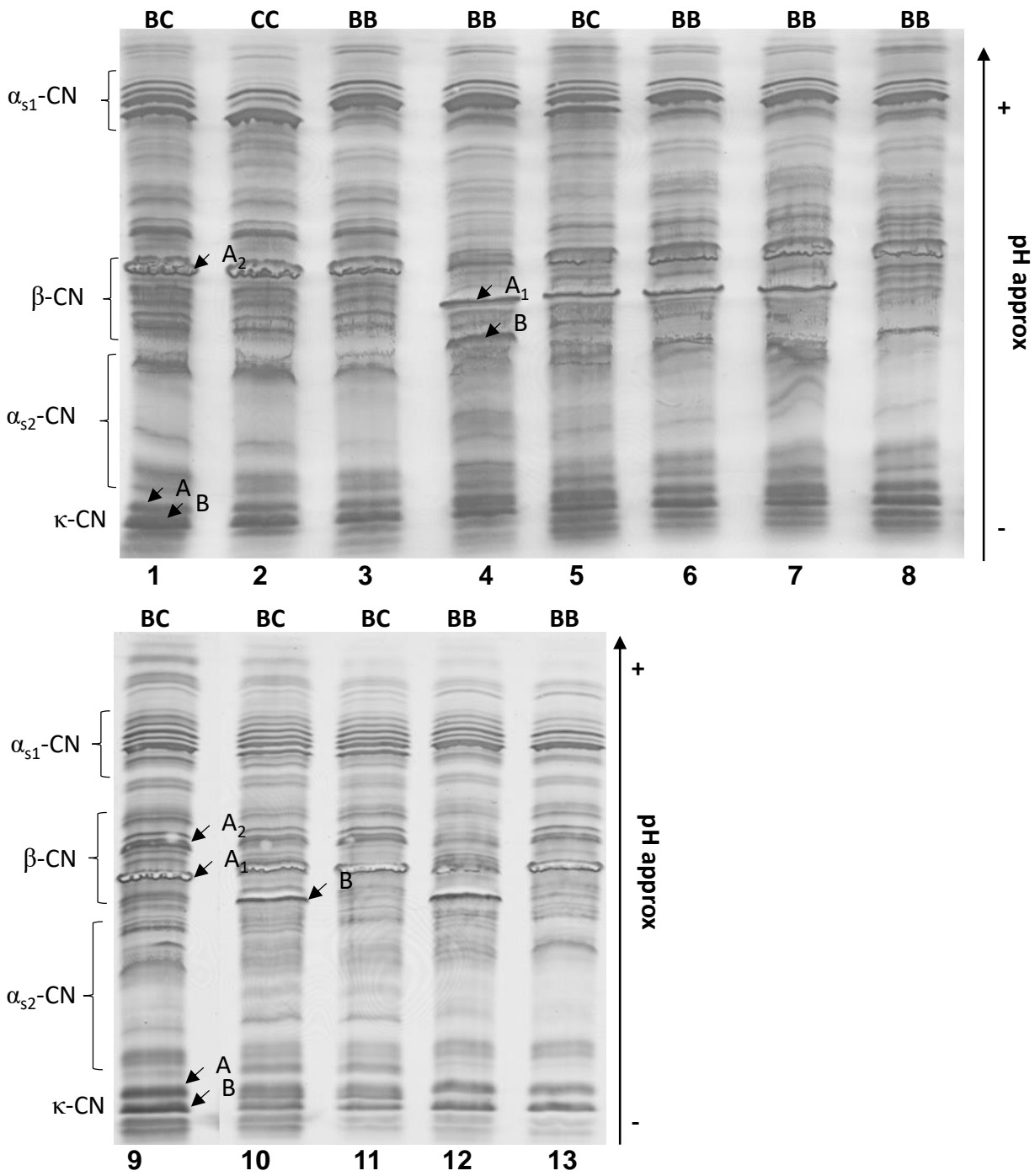


1 Supplementary Material

2



3

4

5

6

7

8

9

10

11

12

13

14

Supplementary Figure 1. The figure shows the 13 most representative electrophoretic profiles of the analysed 84 individual milk samples analysis. On the top of the lane is reported the genotype of *CSN1S1*. The arrows highlight typical bands of main variants of *CSN2* (A₁, A₂ and B variants) and *CSN3* (A and B variants).

15

16 **Supplementary Table 1.** Oligonucleotide primers sequence and positions.

<i>Locus</i>	Position nt		Primers sequence (5'-3')	EMBL	
<i>CSN3</i>	Exon 4	5189-5213	Forward	CACGTCACCCACACCCACATTTATC	X14908.1
		Complementary to: 5567-5542	Reverse	TAATTAGCCCATTTTCGCCTTCTCTGT	
<i>CSN1S1</i>	Exon 19	27587 - 27604	Forward	CATGCAGCATAACTAACC	X59856.2
		Complementary to: 28269 - 28252	Reverse	TACTACACTGCTGTTCTC	

17

18

19

20 **Supplementary Table 2.** Frequencies of *CSN1S1*, *CSN2* and *CSN3* composite genotypes.

Composite genotype	%
BBA ¹ A ² AB	19.05
BBA ² A ² AB	19.05
BCA ² A ² AB	13.11
BBA ² A ² BB	11.90
BBA ¹ A ² BB	10.71
BCA ¹ A ¹ AB	3.57
BBA ¹ A ¹ AB / BBA ¹ A ² AA / BBA ¹ BAB / BCA ¹ A ² AB / BCA ¹ BBB / BCA ² A ² AA	2.38
BBA ¹ A ¹ AA / BBA ¹ A ¹ AB / BBA ² A ² AA / BBA ¹ BBB / BCA ¹ A ¹ AA / BCA ¹ A ² BB / CCA ² A ² AB	1.19

