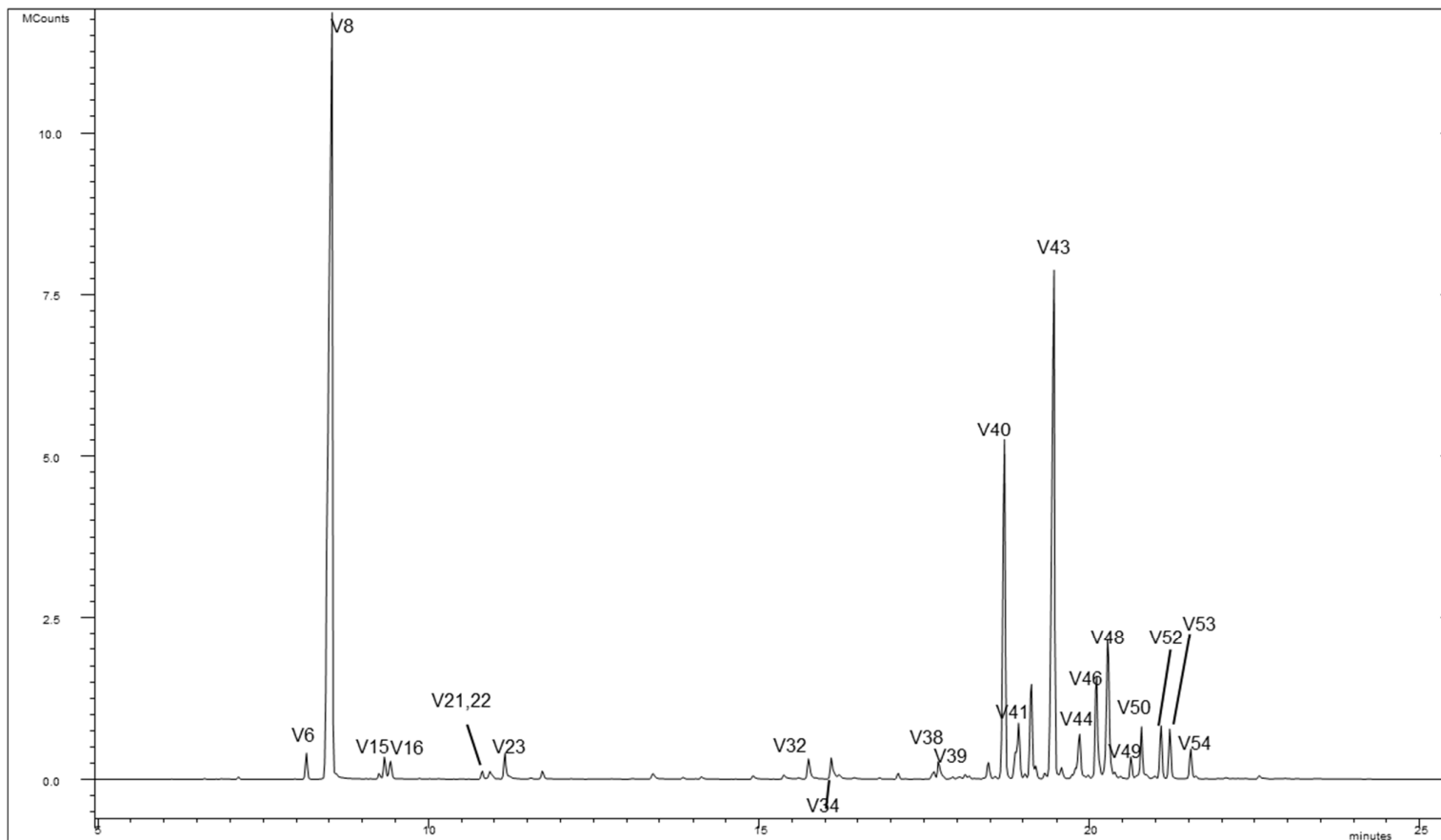


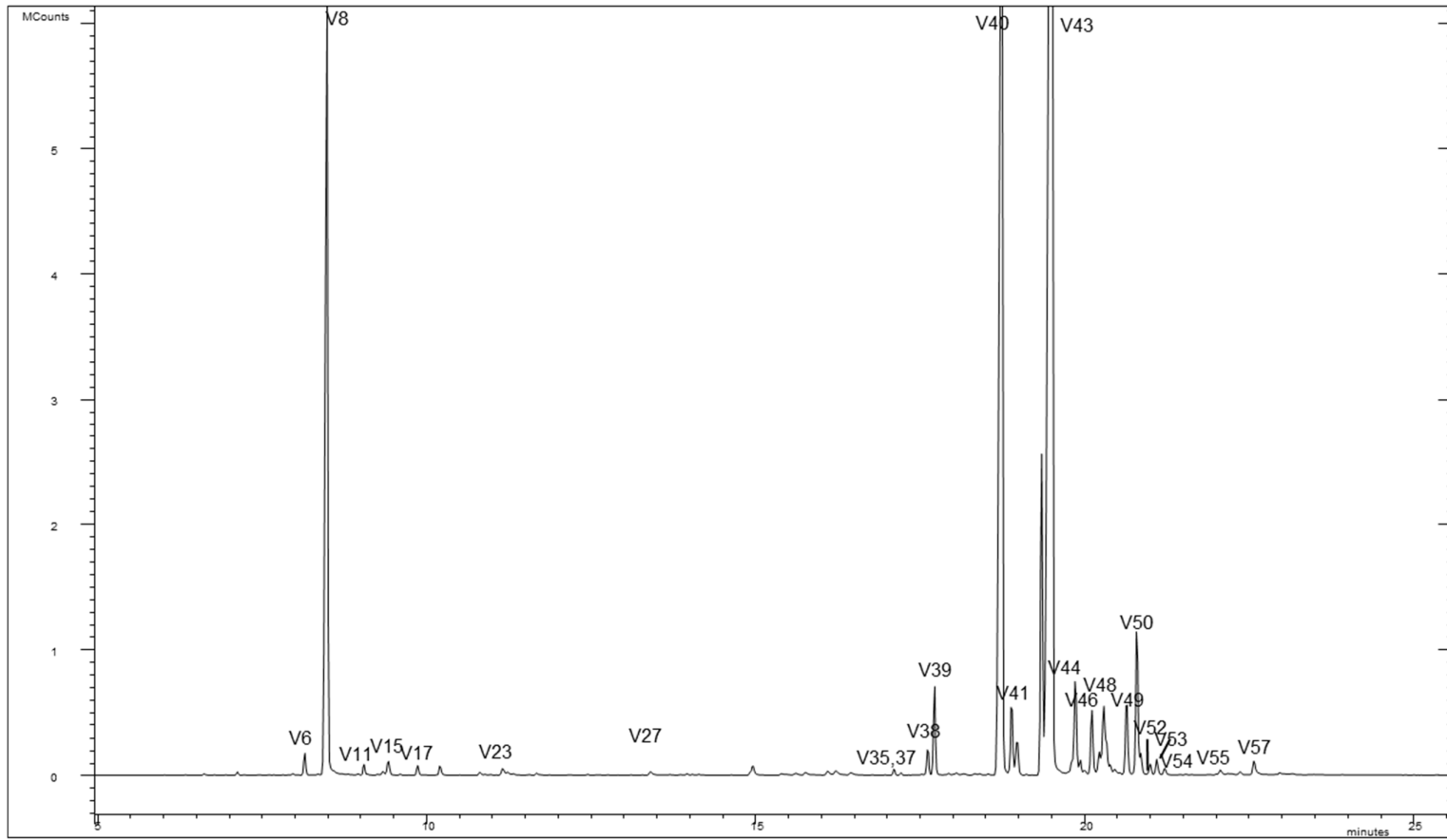
Figure S1. Headspace SPME-GC-MS profile (TIC, total ion current) of the Northern Brewer cultivar. Peak identification as in Table 3.

Figure S2. Comparison among the headspace SPME-GC-MS profiles (TIC, total ion current) of fifteen hop varieties cultivated in the Marche region, Italy. Peak V8 (β -myrcene) was chosen as reference (100% of full scale). Peak identification as in Table 3. (a) Hallertau; (b) Willamette; (c) Yeoman; (d) Centennial; (e) Fuggle; (f) Mount Hood; (g) Northern Brewer; (h) Galena; (i) Brewer's Gold; (j) Sterling; (k) Cascade; (l) Nugget; (m) Columbus; (n) Northdown; (o) Chinook.

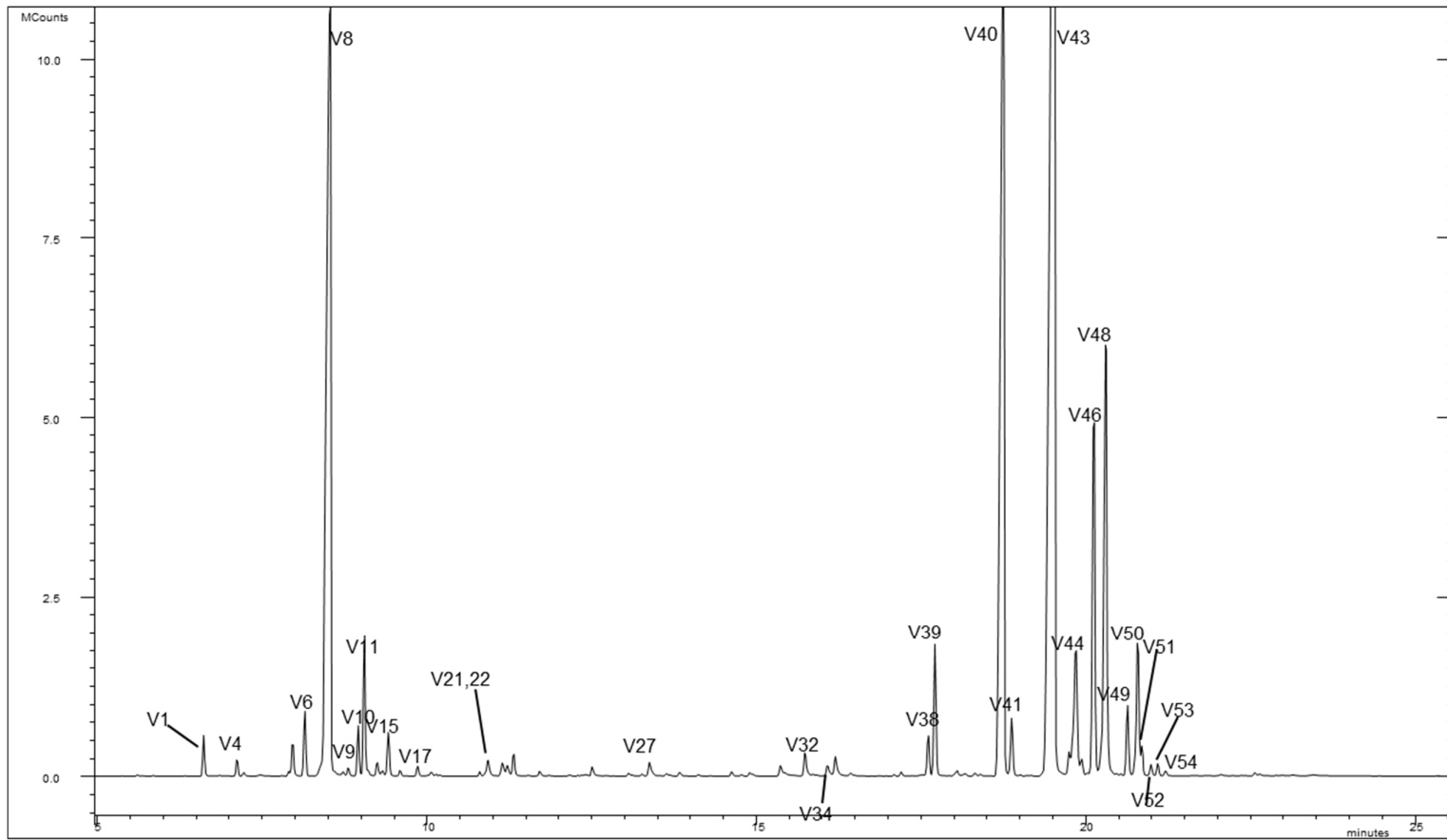
S2 (a)



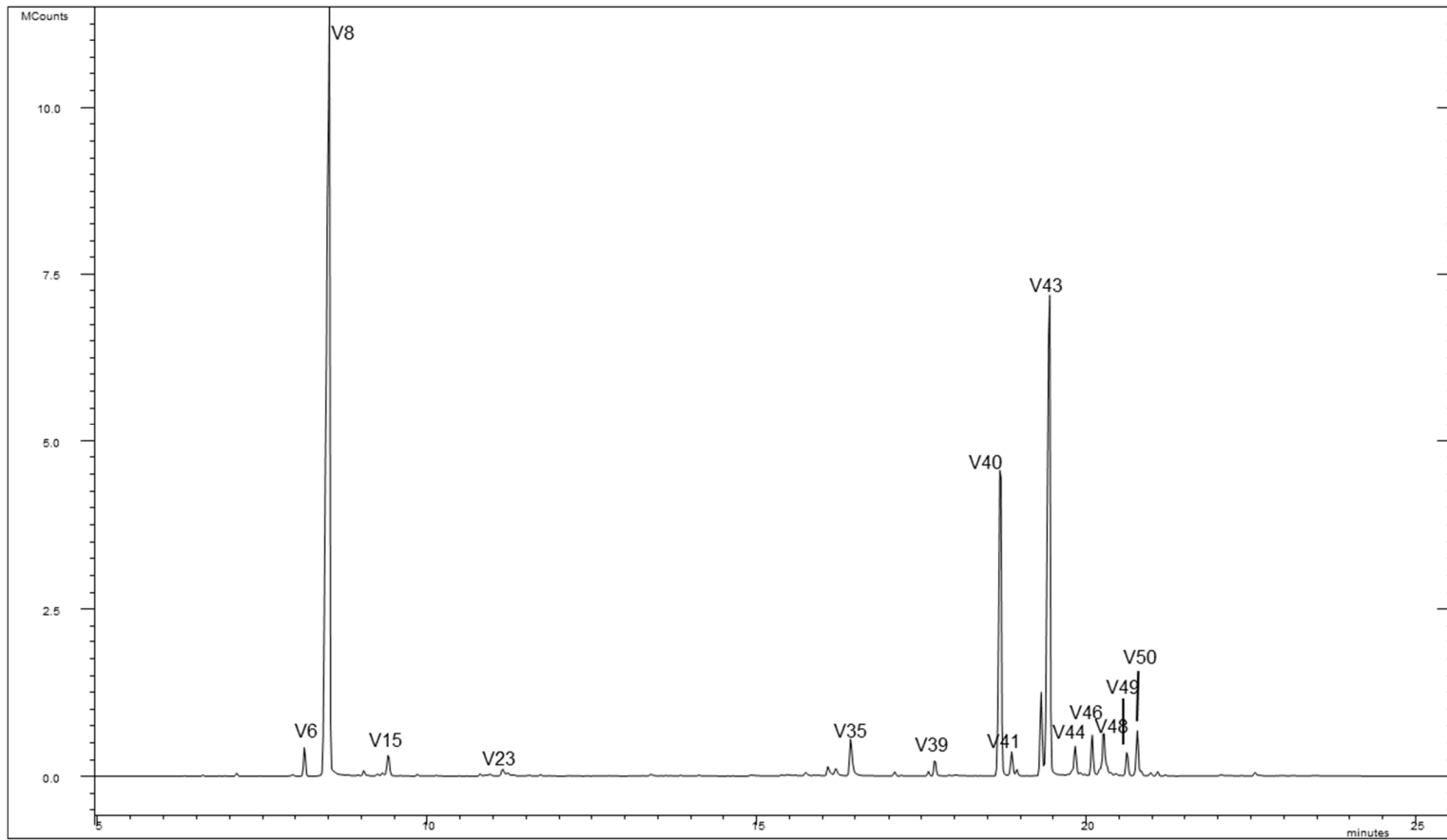
S2 (b)



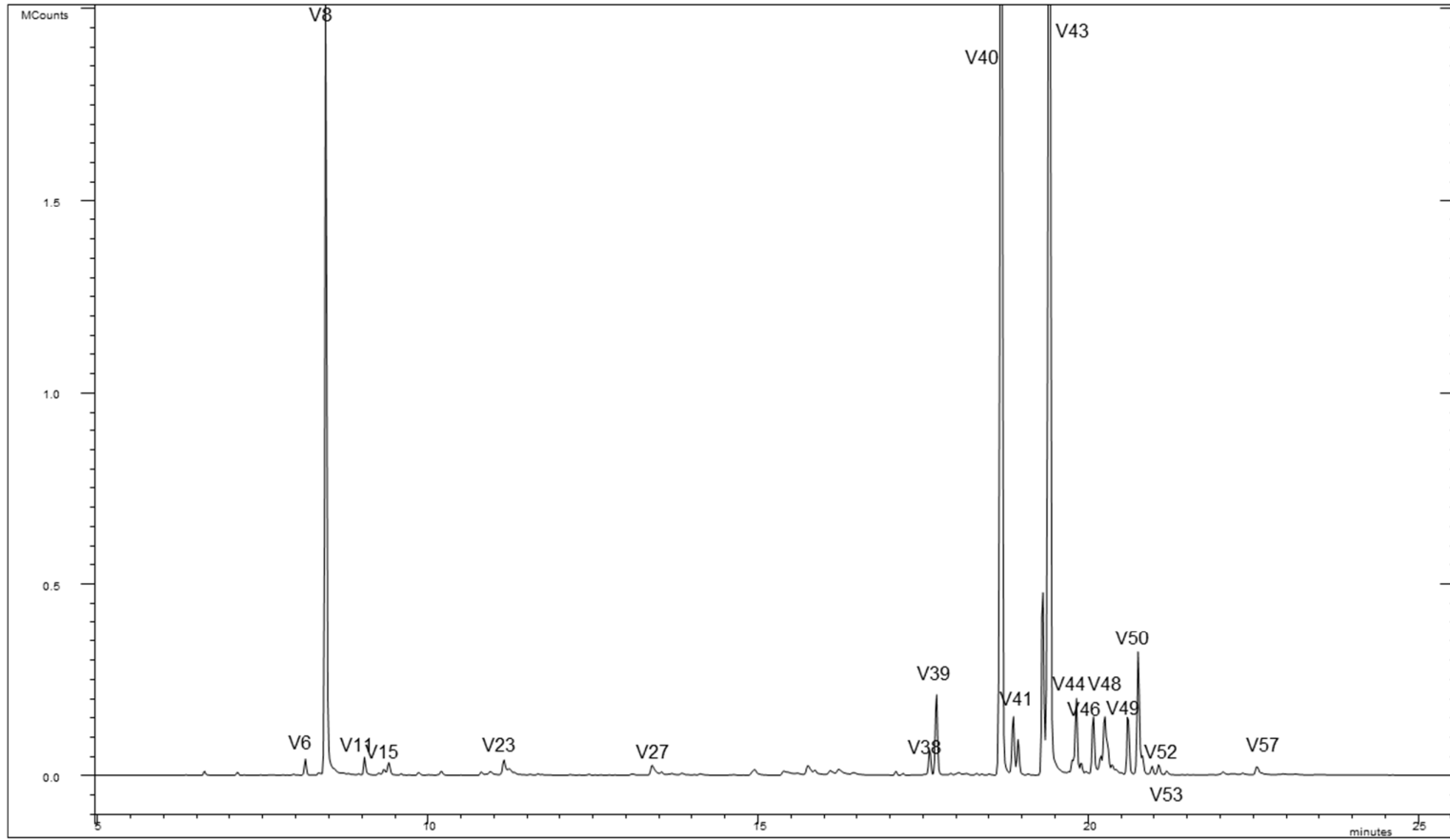
S2 (c)



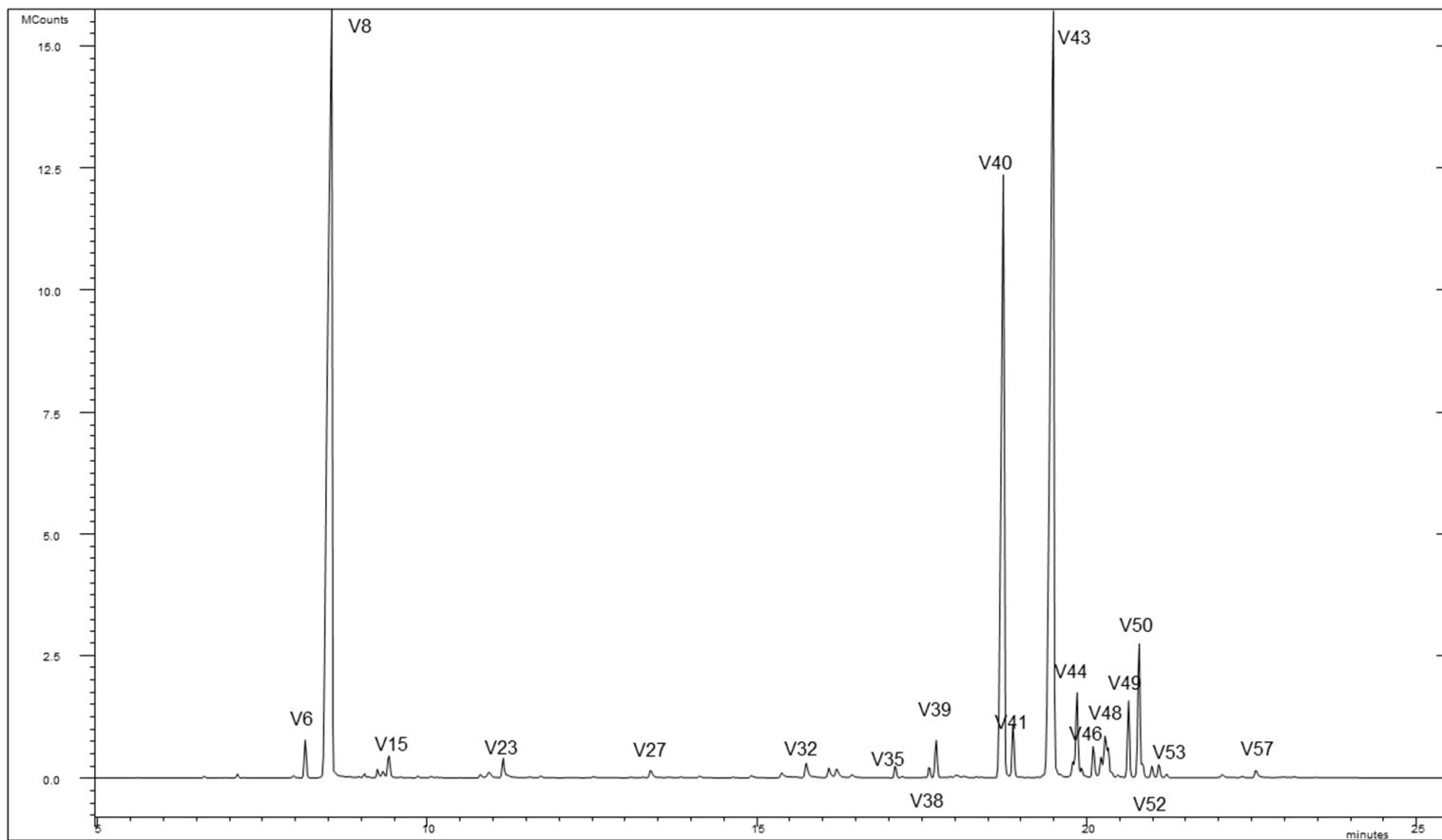
S2 (d)



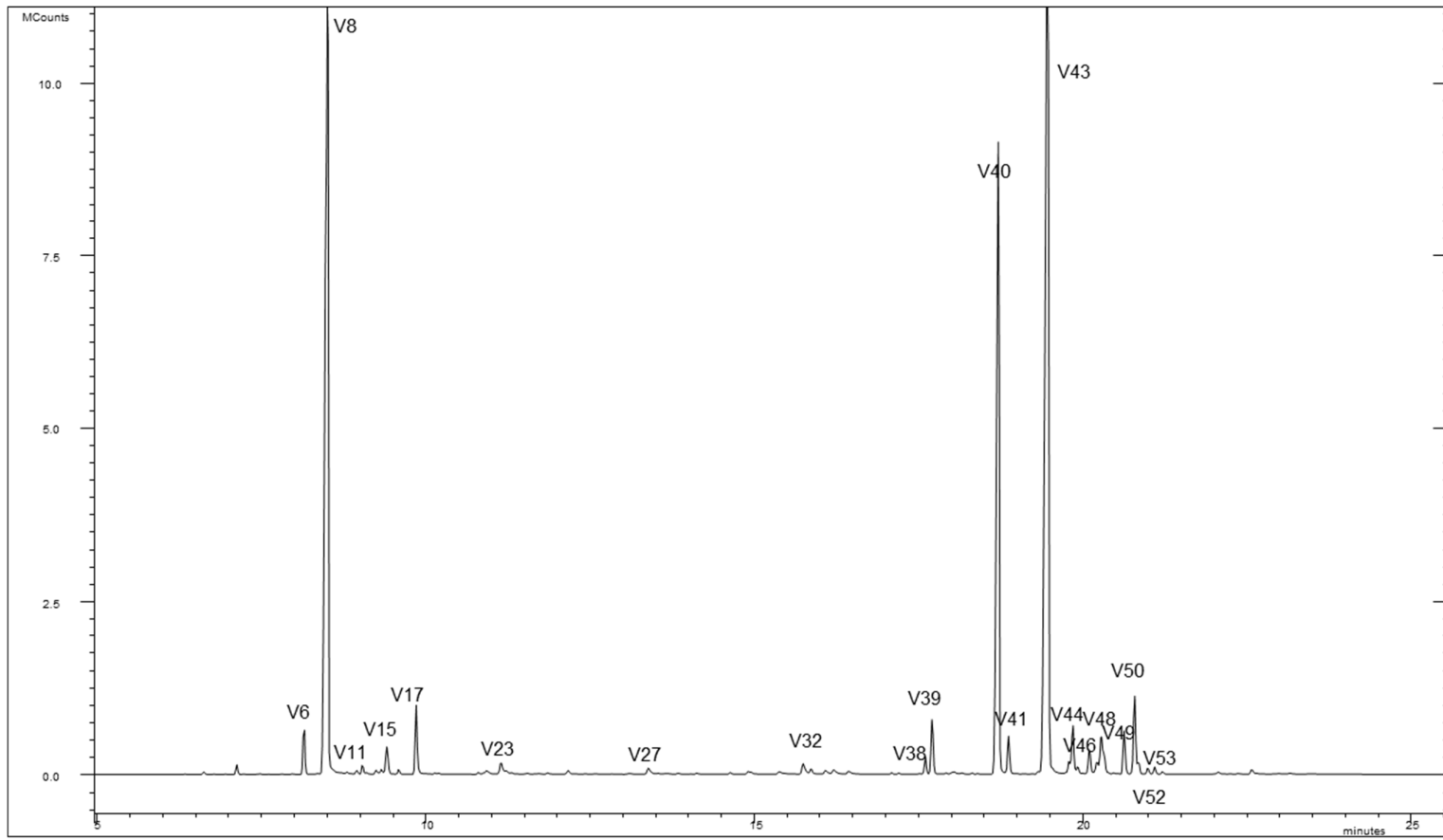
S2 (e)



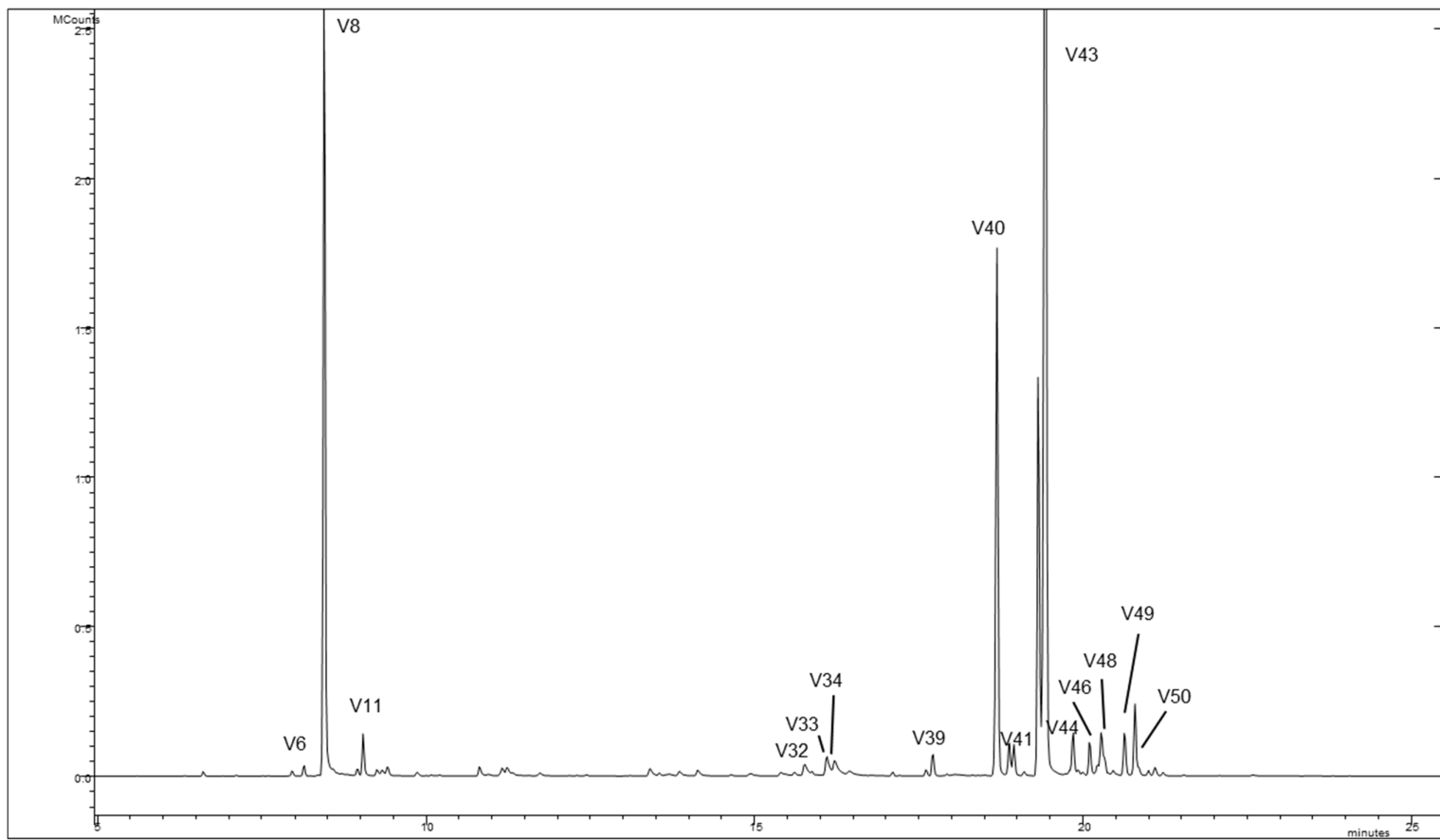
S2 (f)



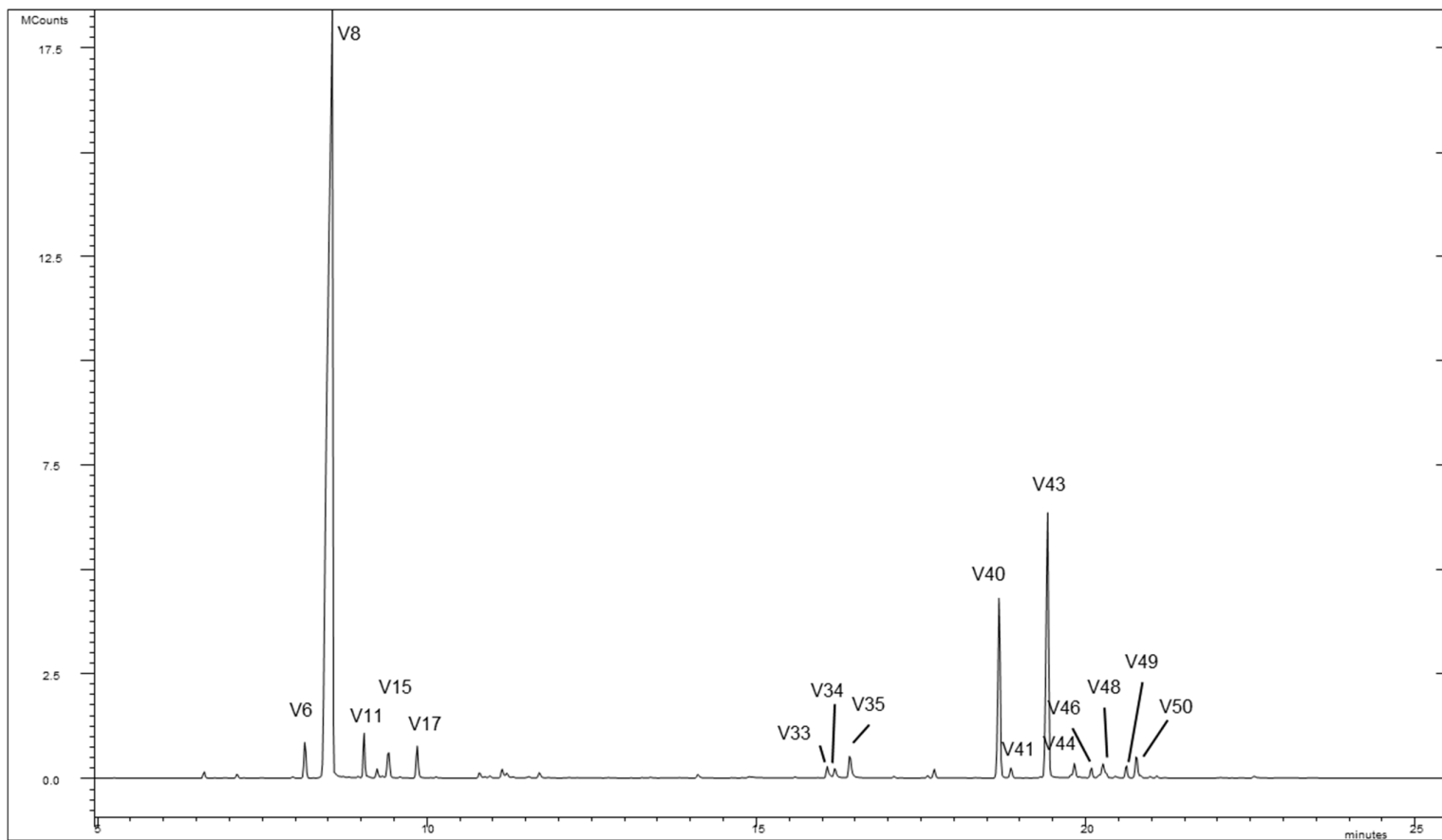
S2 (g)



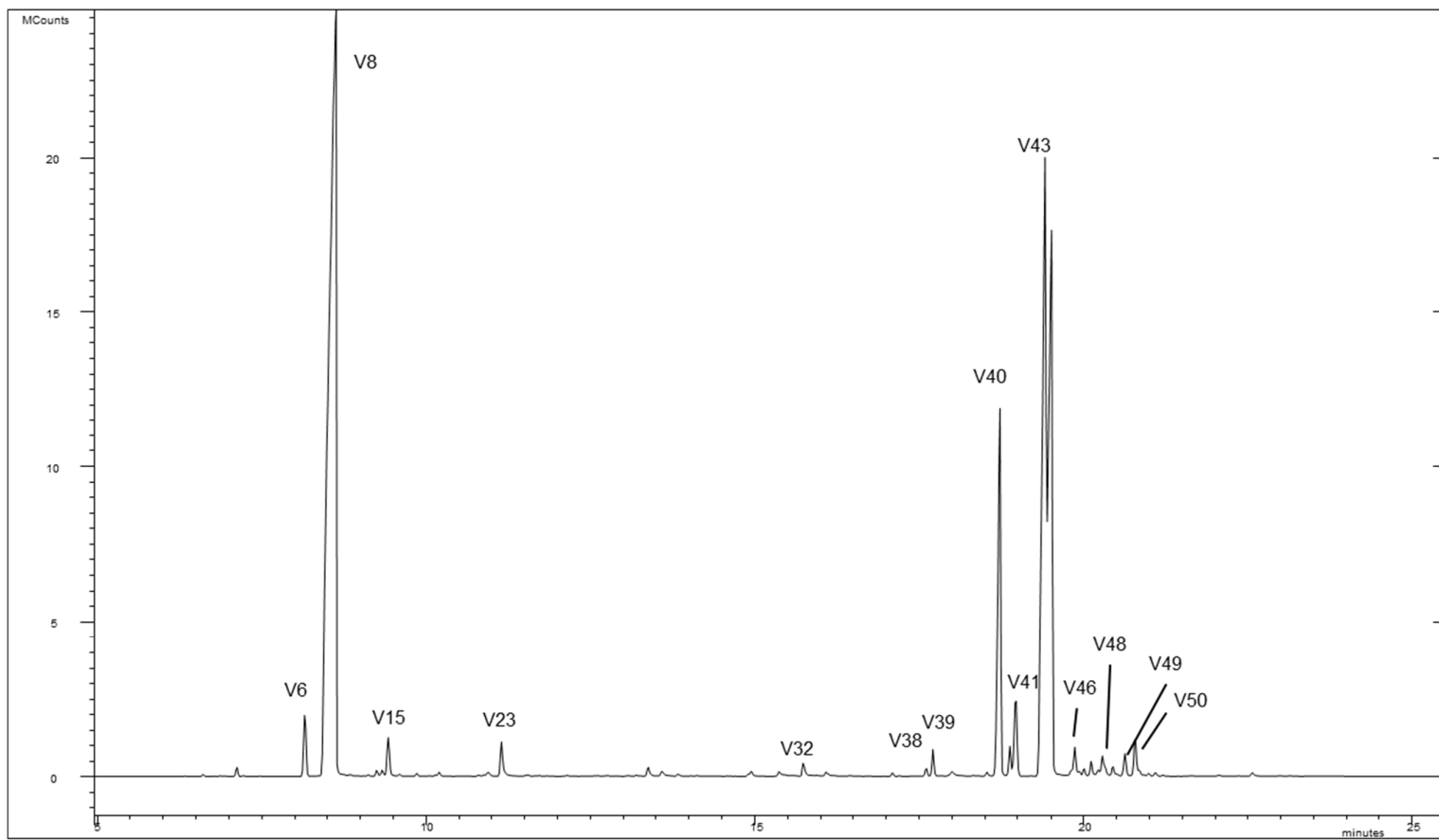
S2 (h)



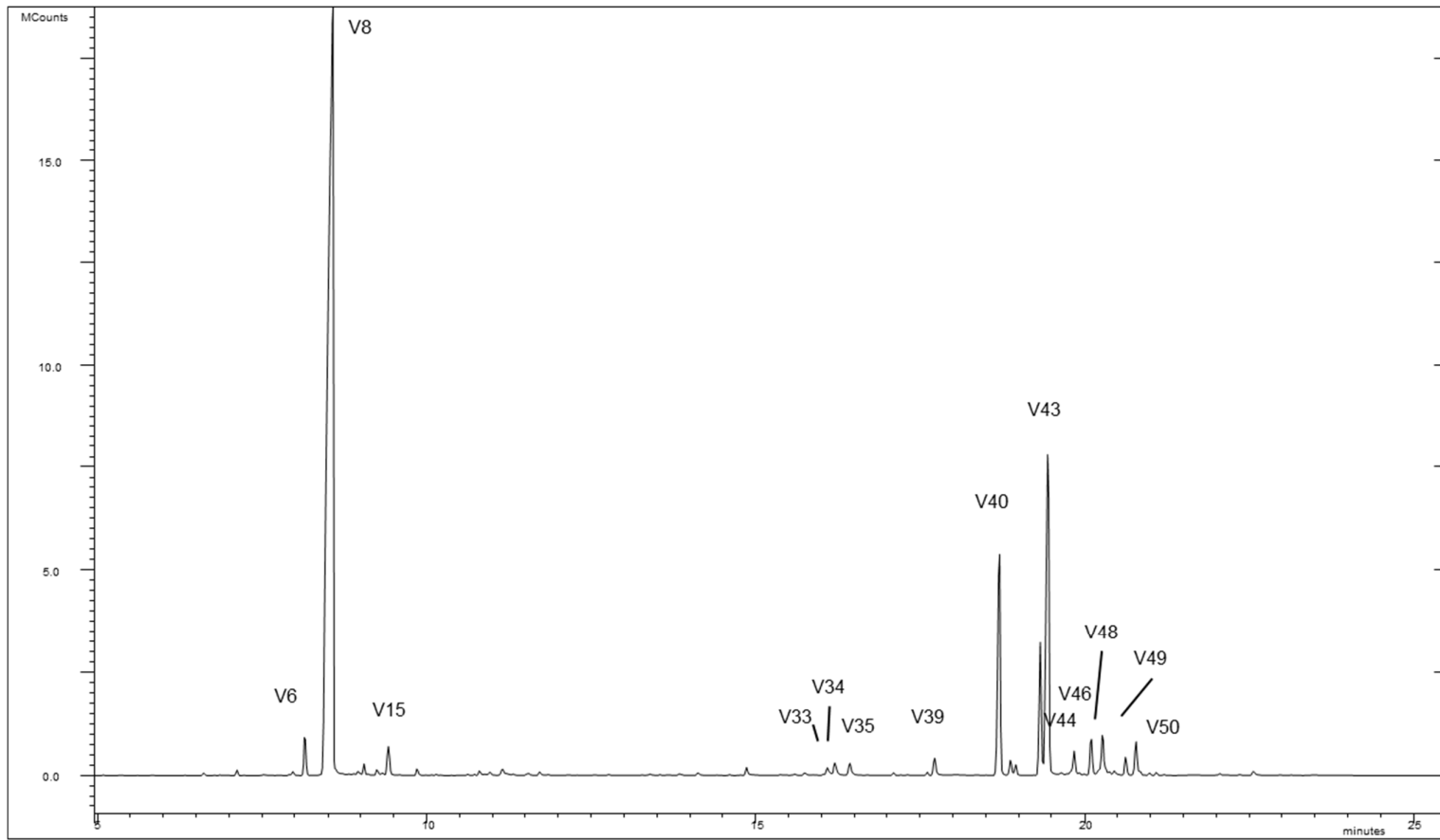
S2 (i)



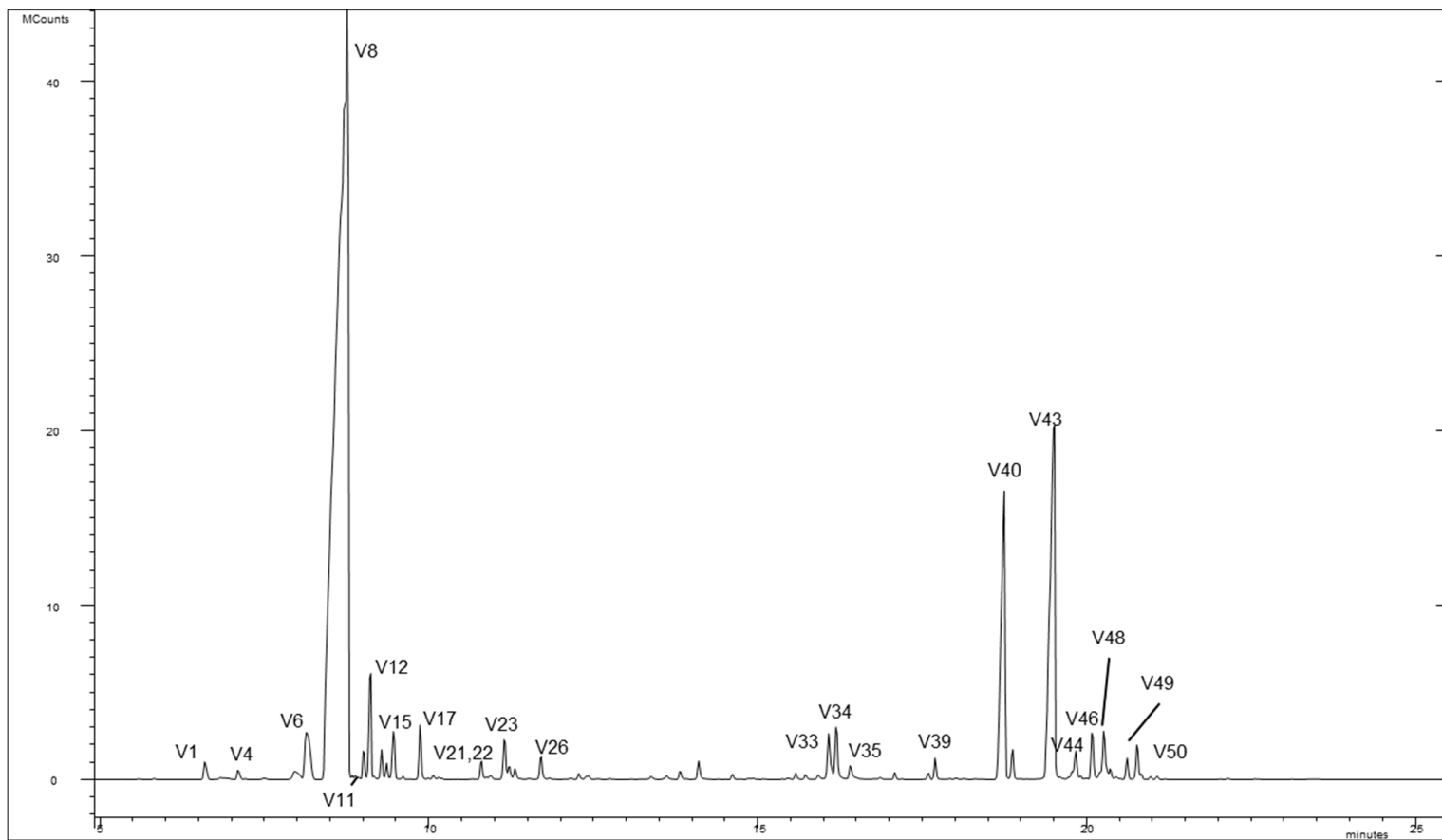
S2 (j)



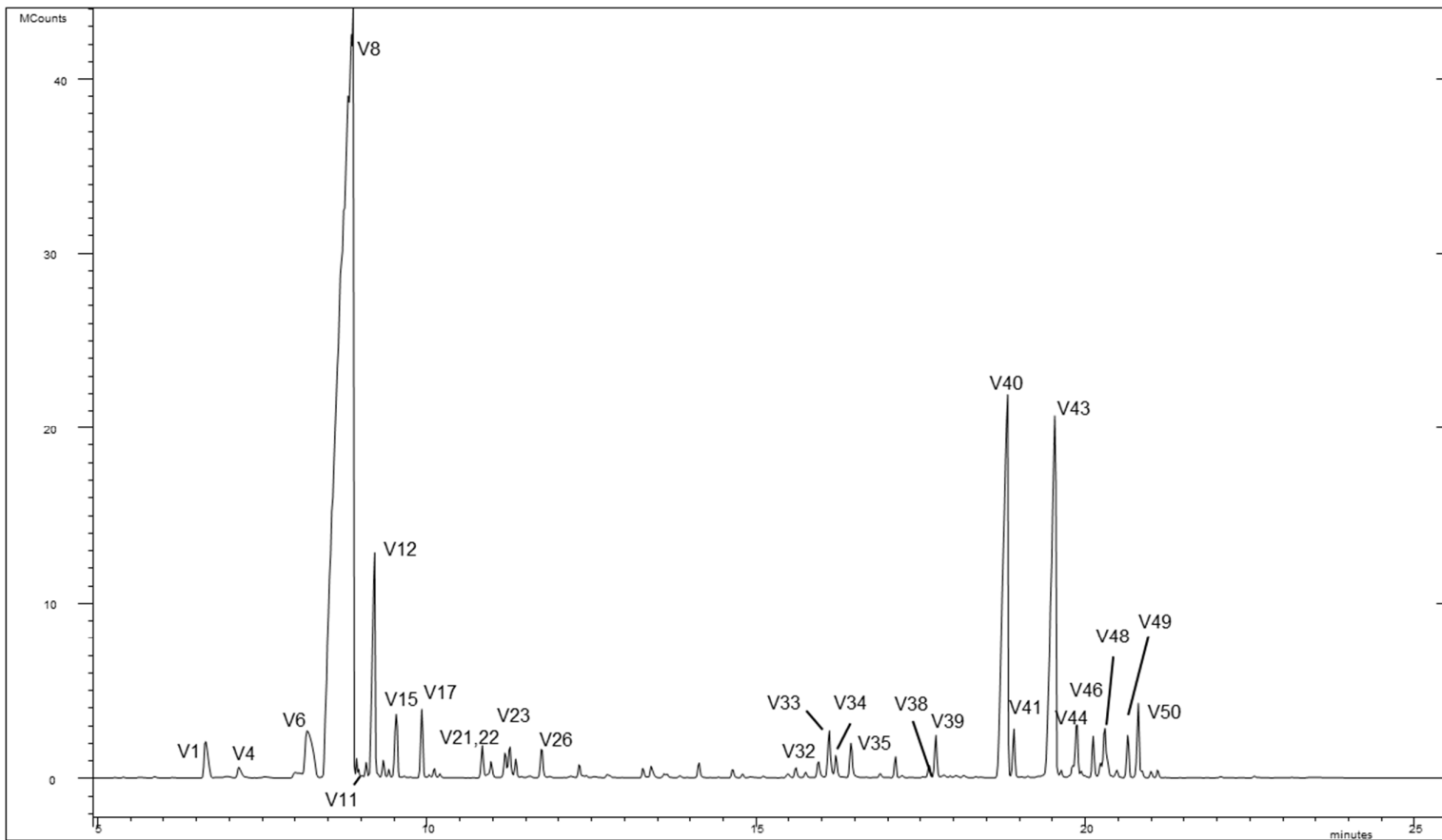
S2 (k)



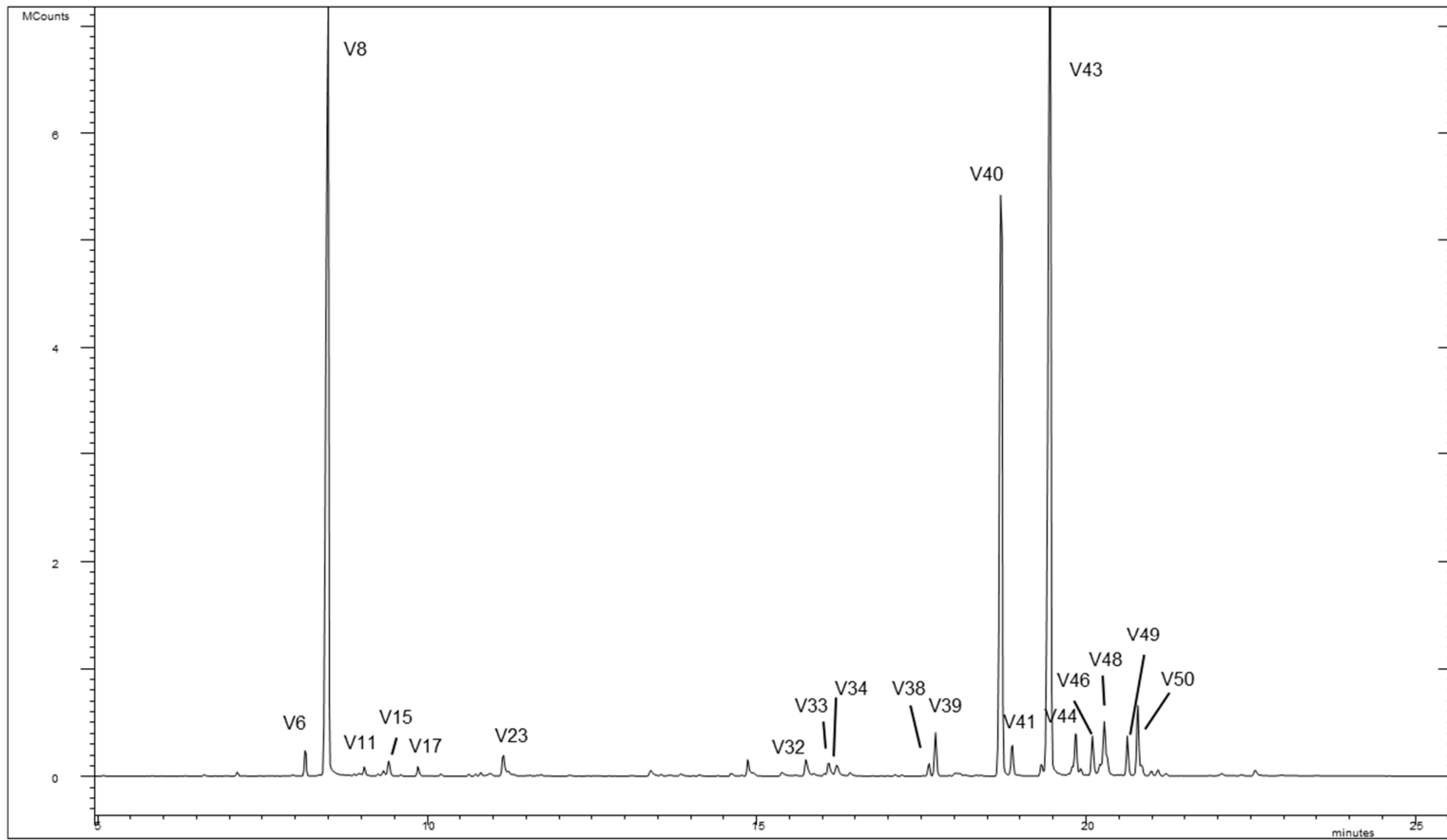
S2 (l)



S2 (m)



S2 (n)



S2 (o)

