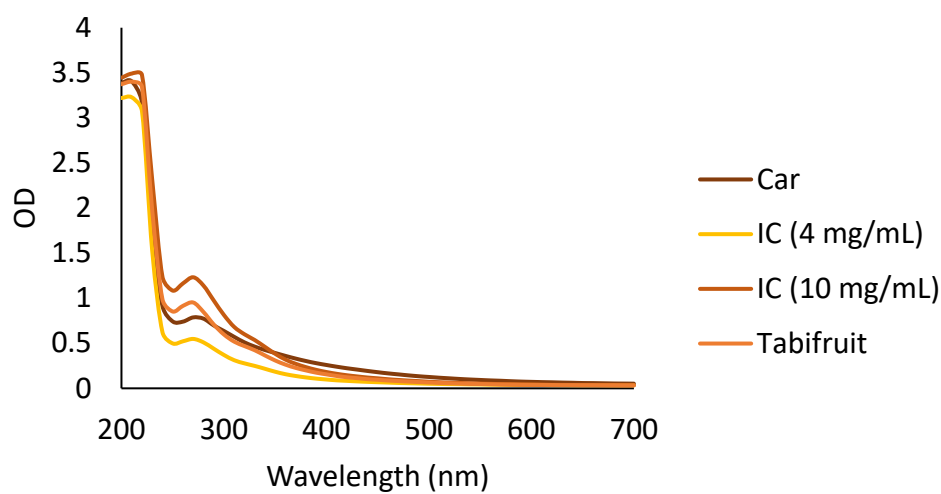


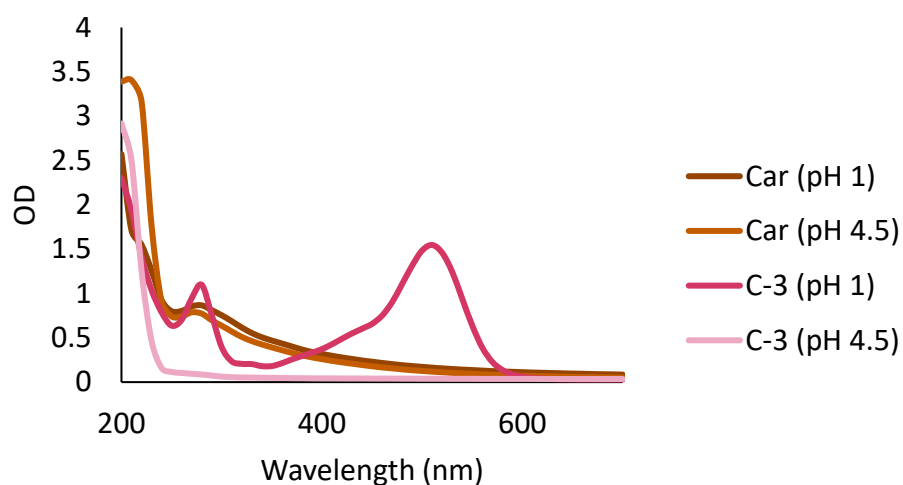
1

(A)



2

(B)



3

4

5

6

7

**Figure S1.** (A) UV-Visible absorption spectrum of the three beverages and caramel E-150d (Car) at 1 mg/mL, measured in a wavelength range of 200 to 700 nm. (B) UV-Visible spectrum of caramel E-150d (Car) at 1 mg/mL and cyanidine-3-glucoside (C-3) at 0.15 mg/mL at pH 1 and 4.5.

8

9 **Table S1.** Measurement of color (L, a\*, b\*) of the three beverages IC (4 mg/mL), IC (10 mg/mL) and  
 10 Tabifruit after stability test for 72 h. Studied conditions were: Fresh, 40 °C and light (Temp + light),  
 11 room temperature and light (light) and room temperature and no light exposure (darkness).

		Color		
		L	a*	b*
<b>IC (4 mg/mL)</b>	Fresh	78.45 ± 0.2 <sup>b</sup>	17.94 ± 0.4 <sup>c</sup>	56.50 ± 0.7 <sup>c</sup>
	Temp + light	88.47 ± 0.5 <sup>c</sup>	4.52 ± 0.2 <sup>a</sup>	20.72 ± 0.3 <sup>a</sup>
	Light	79.89 ± 1.3 <sup>b</sup>	13.66 ± 1.2 <sup>b</sup>	48.74 ± 0.4 <sup>b</sup>
	Darkness	74.62 ± 0.8 <sup>a</sup>	24.27 ± 0.6 <sup>d</sup>	73.76 ± 0.7 <sup>d</sup>
<b>IC (10 mg/mL)</b>	Fresh	60.83 ± 0.8 <sup>a</sup>	32.53 ± 0.5 <sup>c</sup>	59.99 ± 4.1 <sup>a</sup>
	Temp + light	69.59 ± 2.00 <sup>b</sup>	20.78 ± 3.3 <sup>a</sup>	67.40 ± 0.6 <sup>b</sup>
	Light	57.55 ± 2.9 <sup>a</sup>	34.97 ± 1.7 <sup>c</sup>	83.70 ± 2.7 <sup>d</sup>
	Darkness	65.77 ± 2.4 <sup>b</sup>	26.62 ± 0.9 <sup>b</sup>	73.93 ± 0.9 <sup>c</sup>
<b>Tabifruit</b>	Fresh	67.74 ± 2.2 <sup>a</sup>	27.49 ± 1.3 <sup>c</sup>	57.75 ± 7.4 <sup>b</sup>
	Temp + light	80.71 ± 1.2 <sup>b</sup>	11.89 ± 0.6 <sup>a</sup>	47.36 ± 0.9 <sup>a</sup>
	Light	78.84 ± 1.4 <sup>b</sup>	14.72 ± 0.5 <sup>b</sup>	53.63 ± 1.2 <sup>ab</sup>
	Darkness	76.21 ± 2.2 <sup>b</sup>	15.60 ± 0.9 <sup>b</sup>	57.61 ± 1.3 <sup>b</sup>

12 Values indicate the mean ± standard deviation. Different letters represent significant differences for each sample  
 13 and parameter (Tukey Test.  $p < 0.05$ ).

14