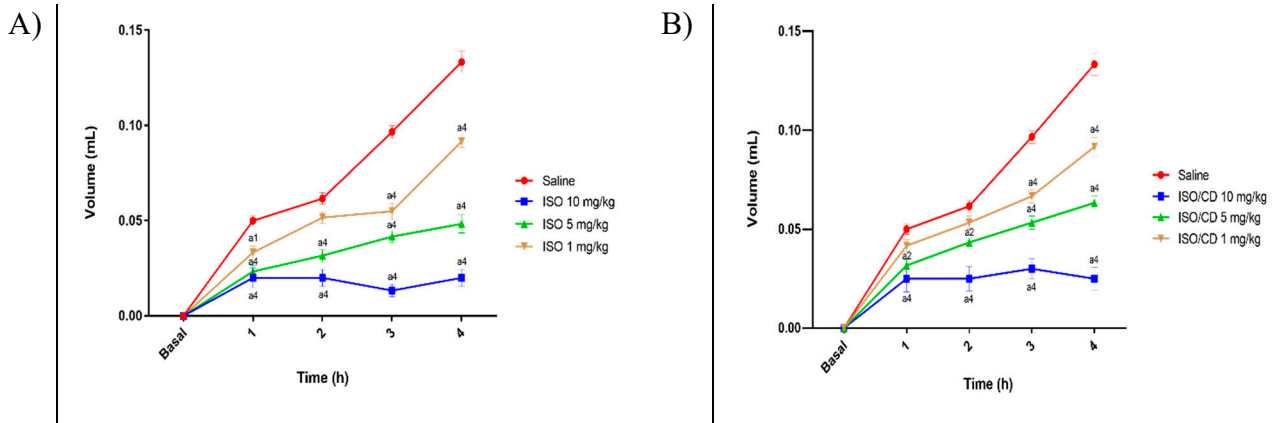


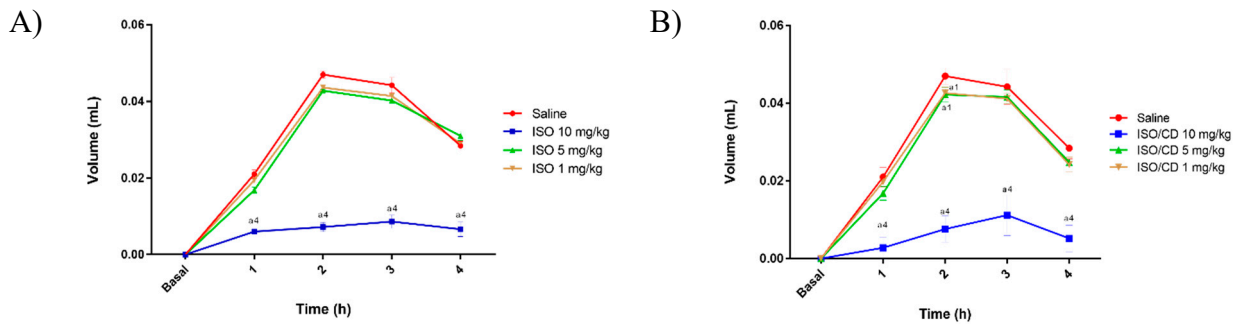
All Figures

Figure A1 - Effect of ISO and ISO/ β -CD (1, 5 and 10 mg/kg/v.o.) on paw edema induced by intraplantar injection of 1% carrageenan in mice.



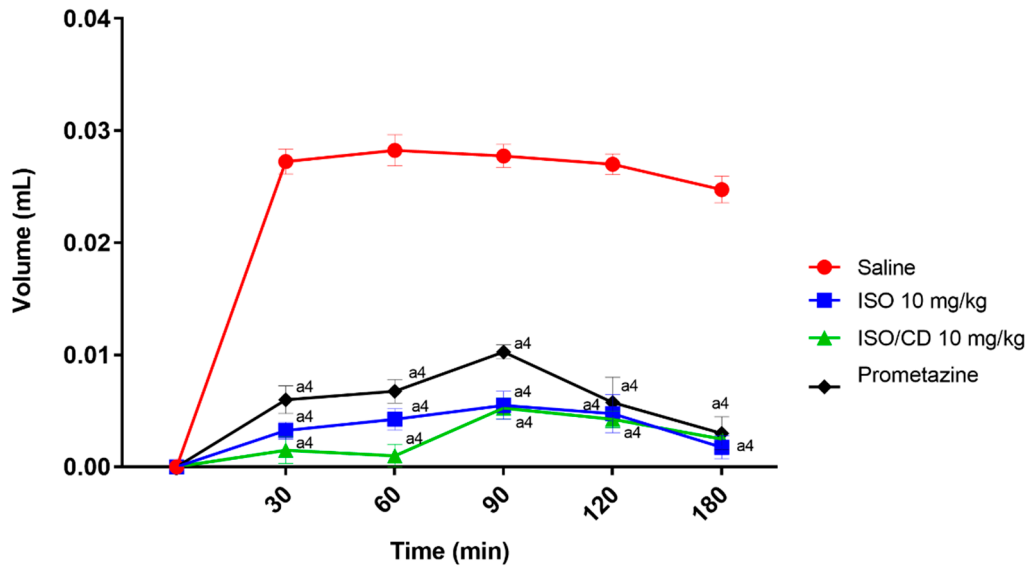
Effect of ISO (A) and ISO/ β -CD (1, 5 and 10 mg/kg/v.o.) (B) on paw edema induced by the intraplantar injection of 1% carrageenan in mice up to the 4th hour. Values represent the mean \pm S.E.M. (n=6/group). Statistical analysis: Two-way ANOVA followed by Tukey's Test with multiple comparisons (a1

Figure A2 - Effect of ISO and ISO/ β -CD (1, 5 and 10 mg/kg/v.o.) on paw edema induced by intraplantar injection of 1% dextran in mice.



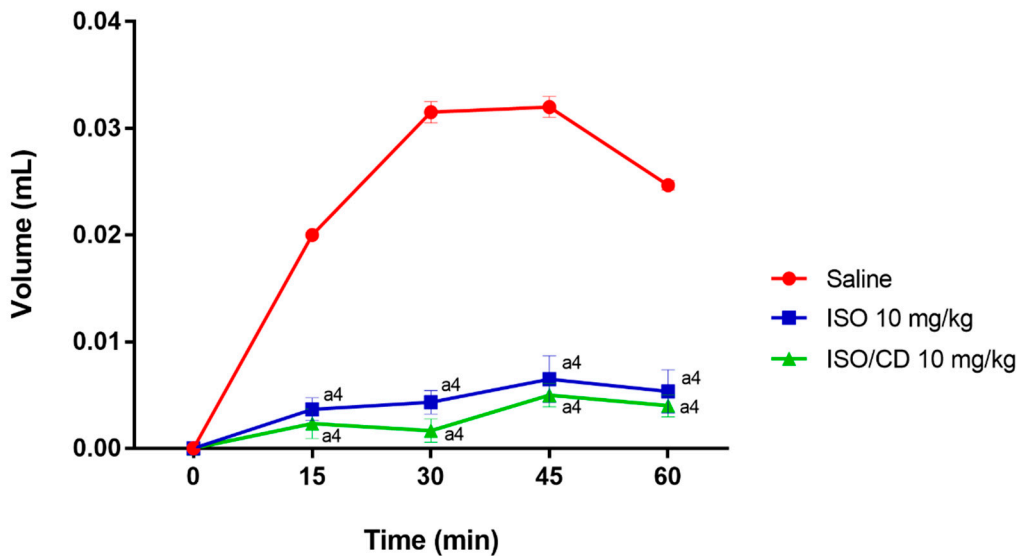
Effect of ISO (A) and ISO/ β -CD (1, 5 and 10 mg/kg/v.o.) (B) on paw edema induced by the intraplantar injection of 1% dextran in mice up to the 4th hour. Values represent the mean \pm S.E.M. (n=6/group). Statistical analysis: Two-way ANOVA followed by Tukey's Test with multiple comparisons (a1

Figure A3 - Effect of ISO and ISO/ β -CD (1, 5 and 10 mg/kg/v.o.) on paw edema induced by intraplantar injection of 1% histamine in mice.



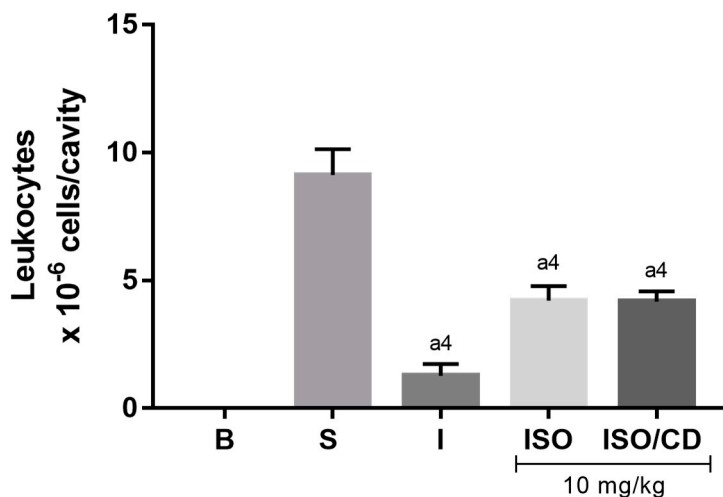
Effect of ISO (A) and ISO/ β -CD (1, 5 and 10 mg/kg/v.o.) (B) on paw edema induced by the intraplantar injection of 1% histamine in mice up to 180 minutes. Values represent the mean \pm S.E.M. (n=6/group). Statistical analysis: Two-way ANOVA followed by Tukey's Test with multiple comparisons (a1p<0.05; a2p <0.01; a3p <0.001; a4p <0.0001 vs. saline).

Figure A4 - Effect of ISO and ISO/ β -CD (1, 5 and 10 mg/kg/v.o.) on paw edema induced by intraplantar injection of prostaglandin E2 in mice.



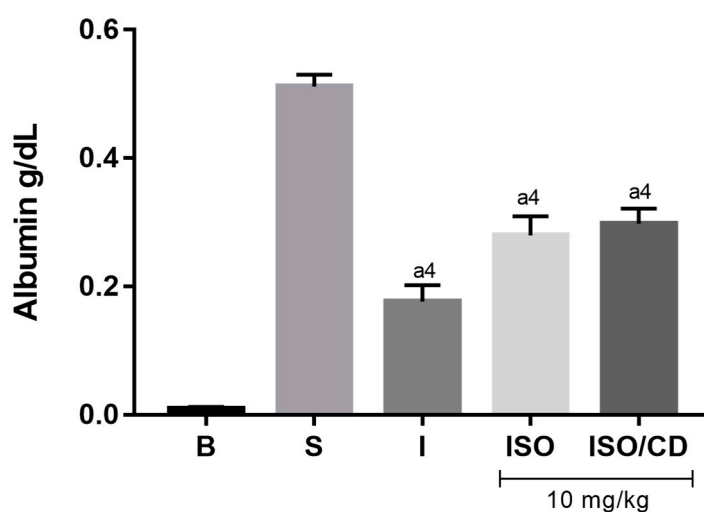
Effect of ISO (A) and ISO/ β -CD (1, 5 and 10 mg/kg/v.o.) (B) on paw edema induced by the intraplantar injection of PGE2 in mice up to 60 minutes. Values represent the mean \pm S.E.M. (n=6/group). Statistical analysis: Two-way ANOVA followed by Tukey's Test with multiple comparisons (a1p<0.05; a2p <0.01; a3p <0.001; a4p <0.0001 vs. saline).

Figure A5 - Effect of ISO and ISO/ β -CD (10 mg/kg/v.o.) on leukocyte migration in 1% carrageenan-induced peritonitis.



Effect of ISO and ISO/ β -CD (10 mg/kg/v.o.) on leukocyte migration in peritonitis induced by 1% carrageenan in mice (B: blank; S: control/saline; I: indomethacin 25 mg/kg). Values represent the mean \pm S.E.M (n=6/group). One-way ANOVA followed by Tukey's Test with multiple comparisons (a1 p <0.05; a2 p <0.01; a3 p <0.001; a4 p <0.0001 vs. saline).

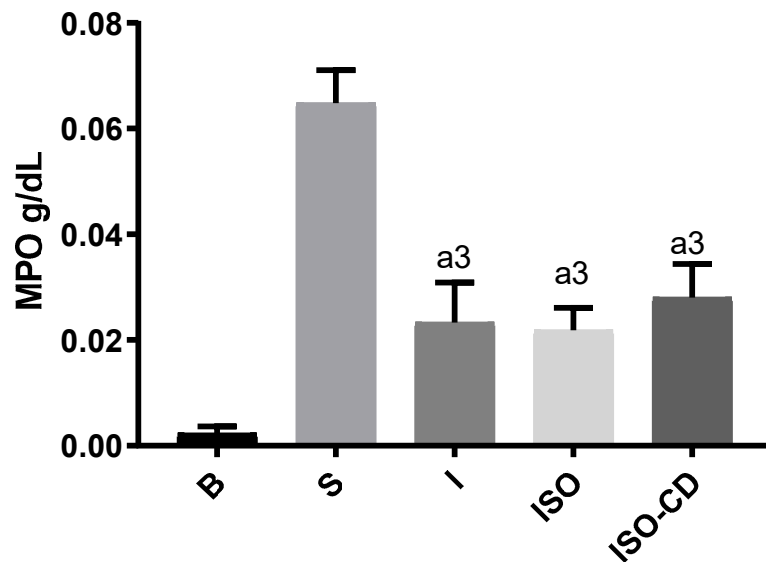
Figure A6 - Effect of ISO and ISO/ β -CD (10 mg/kg/v.o.) on protein extravasation in 1% carrageenan-induced peritonitis.



Effect of ISO and ISO/ β -CD (10 mg/kg/v.o.) on protein extravasation in peritonitis induced by 1% carrageenan in mice (B: blank; S: control/saline; I: indomethacin 25 mg/kg). Values represent the mean \pm

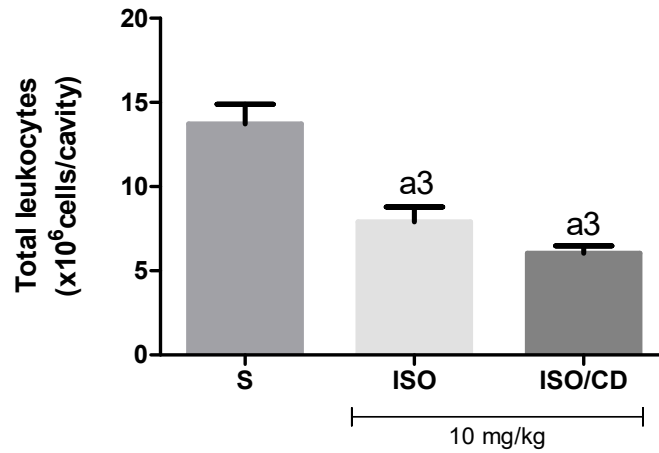
S.E.M (n=6/group). One-way ANOVA followed by Tukey's Test with multiple comparisons (a1p<0.05; a2p <0.01; a3p <0.001; a4p <0.0001 vs. saline)

Figure A7 - Effect of ISO and ISO/ β -CD (10 mg/kg/v.o.) on MPO activity in 1% carrageenan-induced peritonitis.



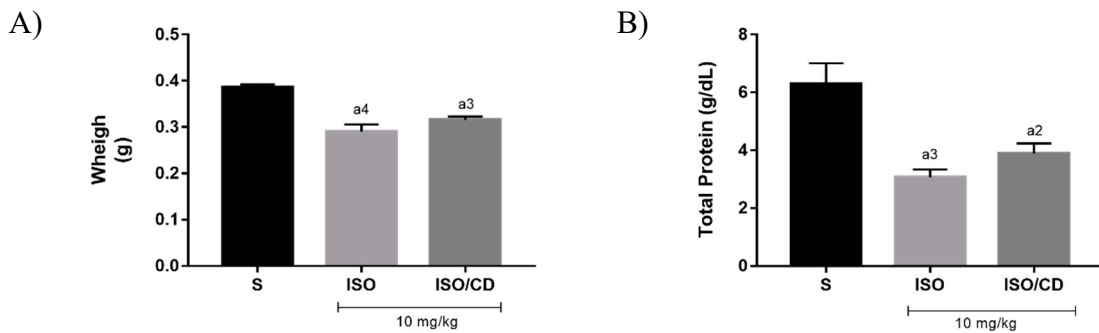
Effect of ISO and ISO/ β -CD (10 mg/kg/v.o.) on MPO activity in peritonitis induced by 1% carrageenan in mice (B: blank; S: control/saline; I: indomethacin 25 mg/kg). Values represent the mean \pm S.E.M (n=6/group). One-way ANOVA followed by Tukey's Test with multiple comparisons (a1p<0.05; a2p <0.01; a3p <0.001; a4p <0.0001 vs. saline).

Figure A8 - Effect of ISO and ISO/ β -CD (10 mg/kg/v.o.) in the leukocytes migration in mice submitted to carrageenan-induced pleurisy.



Effect of ISO e ISO/ β -CD (10 mg/kg/v.o.) in the leukocytes migration in mice submitted to carrageenan-induced pleurisy. (S: control/saline). Data were expressed as mean \pm SEM of 6 animals. Statistical analysis: One-way ANOVA followed by *Tukey's test* with multiple comparisons. (a1 p <0,05; a2 p <0,01; a3 p <0,001; a4 p <0,0001 vs. saline).

Figure A9 - Effect of ISO and ISO/ β -CD (10 mg/kg/v.o.) on granuloma formation.



Effect of ISO and ISO/ β -CD (10 mg/kg/v.o.) on granuloma formation. (S: control/saline). A) Granuloma weight; B) Total proteins obtained from the granuloma homogenate. Values represent the mean \pm S.E.M (n=6/group). One-way ANOVA followed by *Tukey's Test* with multiple comparisons (a1 p <0.05; a2 p <0.01; a3 p <0.001; a4 p <0.0001 vs. saline).