

## Supplementary File 5 – Monitoring Indicators

One component of the HealthRise evaluation was a process evaluation, conducted to provide timely information on the progress of program execution and to accumulate longitudinal information for evaluation of program impact.

IHME collaborated with HealthRise grantees and country partners to develop a series of monitoring indicators tracking program processes, outputs and health outcomes. The set of monitoring indicators collected, and the specification of these indicators, varied by location in order to accommodate the differences in HealthRise implementation programs and local context.

HealthRise grantees provided program monitoring data to IHME on a regular basis during program implementation, either directly or through HealthRise country partners. IHME collated and processed the monitoring data and provided reports summarizing program activities to HealthRise partners.

Table SA1.1 provides the color-coding from monitoring indicators. Table SA1.2 broadly summarizes monitoring indicator availability by grantee. Figures SA1.1-SA1.4 summarizes the number of HealthRise participants in different stages of the programme in each country. Tables SA1.3 – SA1.11 provide more detailed indicator specification and indicator values for each HealthRise location.

Table SA1.1 – Monitoring indicator color-coding

Types	Indicators included
Process	Health workers trained, risk assessments, screening events, meetings, groups started, awareness activities
Outputs	Screened, measured, diagnosed, new patients, enrolled, follow up, number of measures available
Outcomes	Average Systolic Blood Pressure (SBP)/haemoglobin A1c (A1c), hypertension control (SBP < 140mmHg and Diastolic Blood Pressure (DBP) < 90mmHg), diabetes control (A1c < 8%), 10% change in SBP and A1c, changes in blood pressure (BP) and blood glucose (BG) measurements category.

Table SA1.2 – Monitoring indicator availability overview

Key Indicators	Brazil		India		South Africa		United States		
	Teofilo Otoni	Vitoria da Conquista	Shimla	Udaipur	Pixley ka Seme	uMgungundlovu	Ramsey County	Rice County	Hennepin County
Number of health workers trained	✓	✓	✓	✓	✓	✓	✓	✓	✓
Number of community health workers trained	✓	✓	✓	✓	✓	✓	✓	✓	✓
Number of risk assessments conducted	-	-	-	-	✓	✓	-	-	-
Number of public screening events or health fairs	✓	✓	✓	✓	✓	✓	-	-	-
Number of support group meetings held	-	-	✓	✓	✓	✓	-	-	-
Number of support groups started	-	-	-	-	✓	✓	-	-	-
Number of individuals who attended support groups	✓	-	-	✓	-	-	-	-	-
Number of individuals screened for hypertension	✓	✓	✓	✓	✓	✓	-	-	-
Number of individuals screened for diabetes	✓	✓	✓	✓	✓	✓	-	-	-
Number of individuals identified as having elevated BP levels (SBP ≥140mmHg or DBP ≥90mmHg) based on screening	✓	✓	✓	✓	✓	✓	-	-	-
Number of individuals identified as having elevated BG levels based on screening	✓	✓	✓	✓	✓	✓	-	-	-
Number of individuals enrolled in HealthRise program for hypertension (HTN)	✓	✓	✓	✓	✓	✓	✓	✓	✓
Number of individuals enrolled in HealthRise program for diabetes (DM)	✓	✓	✓	✓	✓	✓	✓	✓	✓

Key Indicators	Brazil		India		South Africa		United States		
	Teofilo Otoni	Vitoria da Conquista	Shimla	Udaipur	Pixley ka Seme	uMgungundlovu	Ramsey County	Rice County	Hennepin County
Number of individuals with confirmed diagnosis of HTN prescribed pharmacotherapy treatment	✓	✓	✓	✓	✓	✓	-	-	-
Number of individuals with confirmed diagnosis of DM prescribed pharmacotherapy treatment	✓	✓	✓	✓	✓	✓	-	-	-
Average number of follow-up visits for HTN patients	✓	✓	✓	✓	-	-	-	-	-
Average number of follow-up visits for DM patients	✓	✓	✓	✓	-	-	-	-	-
Number of individuals who received a confirmatory diagnosis for HTN	✓	✓	✓	✓	✓	✓	-	-	-
Number of individuals who received a confirmatory diagnosis for DM	✓	✓	✓	✓	✓	✓	-	-	-
Number of individuals enrolled for HTN with their BP under control (SBP < 140mmHg and DBP < 90mmHg) as of their most recent measurement	✓	✓	✓	✓	✓	✓	✓	✓	✓
Number of individuals enrolled for DM with their BG levels under control (A1c < 8%) as of their most recent measurement	✓	✓	✓	✓	✓	✓	✓	✓	✓
Number of individuals enrolled for HTN with a decrease of 10% or more in SBP	✓	✓	✓	✓	✓	✓	✓	✓	✓
Number of individuals enrolled for DM with a decrease of 10% or more in BG levels	✓	✓	-	-	-	-	✓	✓	✓
Number of individuals enrolled for HTN with an increase of 10% or more in SBP	✓	✓	✓	✓	✓	✓	✓	✓	✓
Number of individuals enrolled for DM with an increase of 10% or more in BG levels	✓	✓	-	-	-	-	✓	✓	✓

Key Indicators	Brazil		India		South Africa		United States		
	Teofilo Otoni	Vitoria da Conquista	Shimla	Udaipur	Pixley ka Seme	uMgungundlovu	Ramsey County	Rice County	Hennepin County
Average change in SBP for individuals enrolled for HTN	✓	✓	✓	✓	✓	✓	✓	✓	✓
Average change in BG levels for individuals enrolled for DM	✓	✓	-	-	-	-	✓	✓	✓
Number of patients enrolled for HTN who transitioned into a lower BP category	✓	✓	✓	✓	✓	✓	✓	✓	✓
Number of patients enrolled for DM who transitioned into a lower BG category	✓	✓	-	-	-	-	✓	✓	✓
Number of patients enrolled for HTN who transitioned into a higher BP category	✓	✓	✓	✓	✓	✓	✓	✓	✓
Number of patients enrolled for diabetes who transitioned into a higher BP category	✓	✓	-	-	-	-	✓	✓	✓

Figure SA1.1 – Flowchart of HealthRise participants in Brazil.

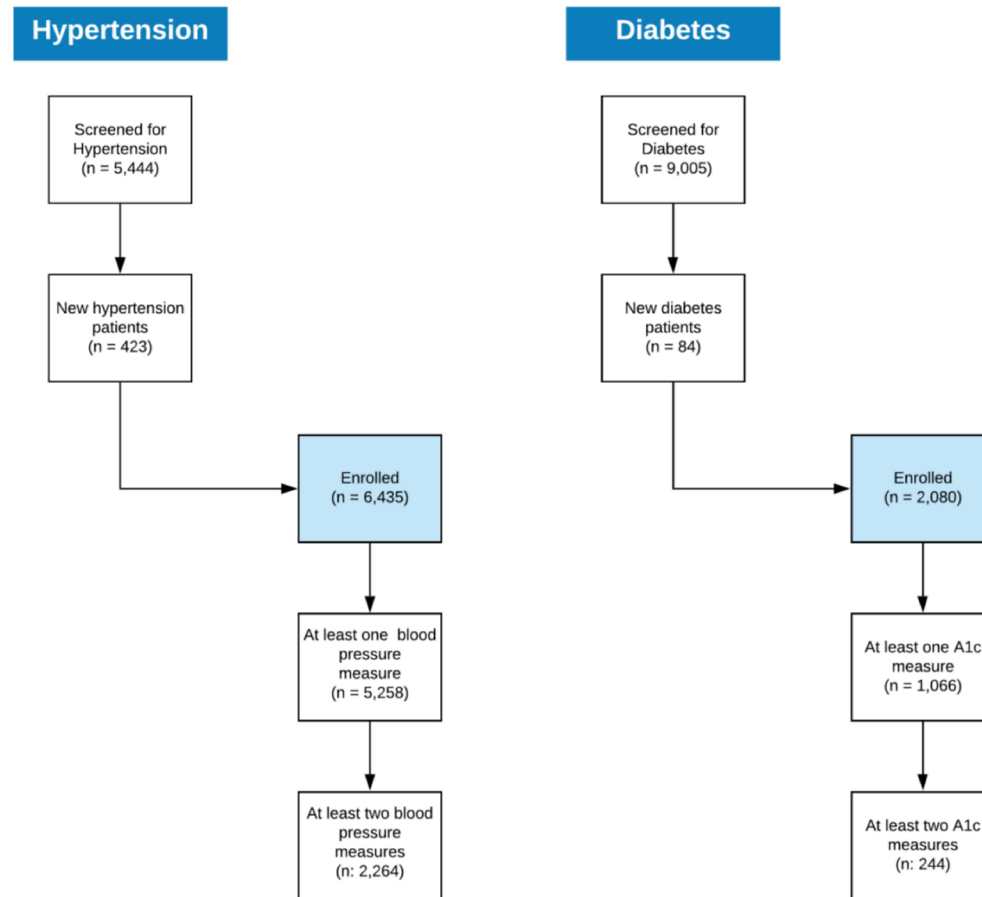


Table SA1.3 – Monitoring indicator results for Teófilo Otoni, Brazil

Definition	Teofilo Otoni
Number of stakeholders' meetings during the project	300
Number of education materials produced (distance learning courses or other)	26
Awareness activities conducted	7
Number of public screening events ("health fairs")	9
Total number of tele-consults performed	31
Total number of health workers trained	384
Number of community health workers (CHWs) trained	243
Number of patients who attended support groups during the project	813
Number of patients who got A1c through Point of Care grant	57
Number of individuals screened either for HTN or DM, according to the definitions below	9,432
Number of individuals who attended a screening activity and: 1) reported a previous HTN diagnosis; 2) or <u>no</u> previous HTN diagnosis but had a BP reading at the time of the screening activity	9,244
Number of individuals who attended a screening activity and: 1) reported a previous DM diagnosis; 2) or no previous DM diagnosis but had a capillary blood glucose (CBG) measurement at the time of the screening activity or a first Fasting Glucose (FG) at the health facility.	6,935
Number of individuals without a previous diagnosis that were measured either for HTN or DM	5,764
Number of individuals who attended a screening activity, did not report a previous HTN diagnosis, and received a BP measurement at the time of the screening activity	3,129
Number of individuals who attended a screening activity, did not report a previous DM diagnosis, and received a CBG measurement at the time of the screening activity or FG at the health facility.	5,396
Of those screened, the sum of the number of individuals who reported a previous diagnosis and the number of individuals without a previous diagnosis with readings above the screening threshold, according to the definitions below	7,445
Of those screened for HTN, the sum of the number of individuals who reported a previous HTN diagnosis and the number of individuals without a previous HTN diagnosis measured with SBP $\geq$ 140mmHg or DBP $\geq$ 90mmHg	6,988
Of those screened for DM, the sum of the number of individuals who reported a previous DM diagnosis and the number of individuals without a previous DM diagnosis measured with CBG $\geq$ 200mg/dl and DM symptoms; or 1st FG $\geq$ 126mg/dl	1,664
Number of individuals without a previous diagnosis that were measured and screened above thresholds for either HTN or DM, according to the definitions below	982
Of those measured for HTN, the number of individuals who didn't report a previous HTN diagnosis and measured SBP $\geq$ 140mmHg or DBP $\geq$ 90mmHg	871
Of those measured for DM, the number of individuals who didn't report a previous DM diagnosis and measured CBG $\geq$ 200mg/dl + DM symptoms; or 1st FG $\geq$ 126mg/dl	125
Number of individuals confirmed for either HTN or DM, according to the definitions below	6,630
Of those screened above thresholds, the sum of the number of patients who reported a previous HTN diagnosis and those newly diagnosed for HTN	6,305

Definition	Teofilo Otoni (cont.)
Of those screened above thresholds, the sum of the number of patients who reported a previous DM diagnosis and those newly diagnosed for DM	1,579
Number of individuals newly diagnosed for either HTN or DM	225
Number of individuals newly diagnosed for HTN	190
Number of individuals newly diagnosed for DM	40
Number of individuals newly diagnosed for DM and HTN	5
Total number of patients enrolled either for HTN or DM, according to the definitions below	4,210
Number of patients with a final diagnosis of HTN that have attended at least one consultation at the health facility	3,992
Number of patients with a final diagnosis of DM that have attended at least one consultation at the health facility	1,028
Number of patients with a final diagnosis of DM and HTN that have attended at least one consultation at the health facility	810
Total number of patients taking the medication	2,237
Number of HTN patients taking prescribed pharmacotherapy	2,090
Number of DM patients taking prescribed pharmacotherapy	400
Number of enrolled patients with a final HTN or DM diagnosis that have attended $\geq 2$ consultations at the health facility	2,027
Number of enrolled patients with a final HTN diagnosis that have attended $\geq 2$ consultations at the health facility	1,914
Number of enrolled patients with a final DM diagnosis that have attended $\geq 2$ consultations at the health facility	576
Average number of consults at the health facility among enrolled patients enrolled	2.1
Number of patients with a final DM diagnosis with at least one A1c reading available	631
Number of patients with a final HTN diagnosis with at least one BP reading available	3,196
Number of patients with a final DM diagnosis with at least two A1c readings available.	176
Number of patients with a final HTN diagnosis with at least two BP readings available	1,169
Total number of patients controlled for DM or HTN, according to the definitions below	1,821
Patients enrolled for HTN with BP < 140/90mmHg at last available reading	1,586
Patients enrolled for DM with A1c < 8% at last available reading.	358
Average change in SBP, among those enrolled for HTN with at least 2 readings available (Last SBP - First SBP)	-1.9
Average change in A1c, among those enrolled for DM with at least 2 readings available (Last A1c - First A1c)	-0.6
Patients with SBP decrease $\geq 10\%$ , among those enrolled for HTN with at least 2 readings available (Last SBP - First SBP)	273

Definition	Teofilo Otoni (cont.)
Patients with A1c decrease $\geq 10\%$ , among those enrolled for DM with at least 2 readings available (Last A1c - First A1c)	61
Patients with SBP increase $\geq 10\%$ , among those enrolled for HTN with at least 2 readings available (Last SBP - First SBP)	225
Patients with A1c increase $\geq 10\%$ , among those enrolled for DM with at least 2 readings available (Last A1c - First A1c)	23
Total number of patients who showed positive progress in their condition, by moving from one BP or blood glucose category to a lower BP or blood glucose category	352
Patients whose BP has moved to a lower category, among those enrolled for HTN with at least 2 BP readings	314
Patients whose A1c has moved to a lower category, among those enrolled for DM with at least 2 A1c readings	53
Total number of patients who showed decline in their condition, by moving from one BP or blood glucose category to a higher BP or blood glucose category	253
Patients whose BP has moved to a higher category, among those enrolled for HTN with at least 2 BP readings	241
Patients whose A1c has moved to a higher category, among those enrolled for DM with at least 2 A1c readings	18



Table SA1.4 – Monitoring indicator results for Vitória da Conquista, Brazil

Definition	Vitoria da Conquista
Number of stakeholders' meetings during the project	37
Number of education materials produced (distance learning courses or other)	2
Awareness activities	35
Number of public screening events ("health fairs")	23
Total number of health workers trained (in-person trainings)	595
Number of CHWs trained (in-person trainings)	340
Number of patients who attended the health facility gyms during the project	136
Number of patients who got A1c through Point of Care grant	376
Number of individuals screened either for HTN or DM, according to the definitions below.	4,323
Number of individuals who attended a screening activity and: 1) reported a previous HTN diagnosis; 2) or <u>no</u> previous HTN diagnosis but had a BP reading at the time of the screening activity	4,321
Number of individuals who attended a screening activity and: 1) reported a previous DM diagnosis; 2) or <u>no</u> previous DM diagnosis but had a CBG or FG reading at the time of the screening activity.	4,295
Number of individuals without a previous diagnosis that got measured either for HTN or DM	3,753
Number of individuals who attended a screening activity, did not report a previous HTN diagnosis, and received a BP measurement at the time of the screening activity	2,315
Number of individuals who attended a screening activity, did not report a previous DM diagnosis, and received a CBG or FG measurement at the time of the screening activity.	3,609
Of those screened, the sum of the number of individuals who reported a previous diagnosis and the number of individuals without a previous diagnosis with readings above the screening threshold, according to the definitions below	2,866
Of those screened for HTN, the sum of the number of individuals who reported a previous HTN diagnosis and the number of individuals without a previous HTN diagnosis and SBP $\geq$ 140 mmHg or DBP $\geq$ 90 mmHg	2,633
Of those screened for DM, the sum of the number of individuals who reported a previous DM diagnosis and the number of individuals without a previous DM diagnosis and: <b>For VC Health Unit:</b> CBG $\geq$ 100 mg/dl if fasting; CBG $\geq$ 140 mg/dl if non-fasting. <b>For VC SESI:</b> FG $\geq$ 126 mg/dl or CBG $\geq$ 140 mg/dl.	1,185
Number of individuals without a previous diagnosis that were measured and screened above thresholds for either HTN or DM, according to the definitions below	1,051
Of those measured for HTN, the number of individuals who didn't report a previous HTN diagnosis and measured SBP $\geq$ 140 mmHg or DBP $\geq$ 90 mmHg	626

Definition	Vitoria da Conquista (cont.)
Of those measured for DM, the number of individuals who didn't report a previous DM diagnosis and: <b>For VC Health Unit:</b> measured CBG $\geq$ 100 mg/dl if fasting; measured CBG $\geq$ 140 mg/dl if non-fasting. <b>For VC SESI:</b> measured FG $\geq$ 126 mg/dl or CBG $\geq$ 100 mg/dl.	499
Number of individuals confirmed for either HTN or DM, according to the definitions below	2,234
Of those screened above thresholds, the sum of the number of patients who reported a previous HTN diagnosis and the number of patients newly diagnosed for HTN	2,237
Of those screened above thresholds, the sum of the number of patients who reported a previous DM diagnosis and the number of patients newly diagnosed for DM	730
Number of patients newly diagnosed for either HTN or DM	263
Number of patients newly diagnosed for HTN	233
Number of patients newly diagnosed for DM	44
Number of patients newly diagnosed for DM and HTN	12
Total number of patients enrolled either for HTN or DM, according to the definitions below	2,610
Number of patients with a final diagnosis of HTN that have attended at least one consultation at the health facility	2,443
Number of patients with a final diagnosis of DM that have attended at least one consultation at the health facility	1,052
Number of patients with a final diagnosis of DM and HTN that have attended at least one consultation at the health facility	885
Among patients that were enrolled after being screened, the average number of days between screening and 1st consultation at the health facility	88.5
Total number of patients prescribed pharmacotherapy	1,728
Number of HTN patients prescribed pharmacotherapy	1,566
Number of DM patients prescribed pharmacotherapy	622
Enrolled patients with a final HTN or DM diagnosis that have attended $\geq$ 2 consultations at the health facility	1,298
Enrolled patients with a final HTN diagnosis that have attended $\geq$ 2 consultations at the health facility	1,218
Enrolled patients with a final DM diagnosis that have attended $\geq$ 2 consultations at the health facility	541
Average number of consults at the health facility among enrolled patients	2.87
Number of patients with a final DM diagnosis with at least one A1c reading available.	435
Number of patients with a final HTN diagnosis with at least one BP reading available	2,062
Number of patients with a final DM diagnosis with at least two A1c readings available.	68
Number of patients with a final HTN diagnosis with at least two BP readings available	1,095
Total numbers of patients controlled for DM or HTN, according to the definitions below	995
Patients enrolled for HTN with BP < 140/90mmHg at last available reading	845
Patients enrolled for DM with A1c < 8% at last available reading	228

Definition	Vitoria da Conquista (cont.)
Average change in SBP, among those enrolled for HTN with at least 2 readings available (Last SBP - First SBP)	-4.14
Average change in A1c, among those enrolled for DM with at least 2 readings available (Last A1c - First A1c)	-0.94
Patients with SBP decrease $\geq 10\%$ , among those enrolled for HTN with at least 2 readings available (Last SBP - First SBP)	206
Patients with A1c decrease $\geq 10\%$ , among those enrolled for DM with at least 2 readings available (Last A1c - First A1c)	33
Patients with SBP increase $\geq 10\%$ , among those enrolled for HTN with at least 2 readings available (Last SBP - First SBP)	81
Patients with A1c increase $\geq 10\%$ , among those enrolled for DM with at least 2 readings available (Last A1c - First A1c)	6
Total number of patients who showed positive progress in their condition, by moving from one BP or blood glucose category to a lower BP or blood glucose category	256
Patients whose BP has moved to a lower category, among those enrolled for HTN with at least 2 BP readings	230
Patients whose A1c has moved to a lower category, among those enrolled for DM with at least 2 A1c readings	29
Total number of patients who showed a decline in their condition, by moving from one BP or blood glucose category to a higher BP or blood glucose category	85
Patients whose BP has moved to a higher category, among those enrolled for HTN with at least 2 BP readings	80
Patients whose A1c has moved to a higher category, among those enrolled for DM with at least 2 A1c readings	5

Figure SA1.2 – Flowchart of HealthRise participants in India.

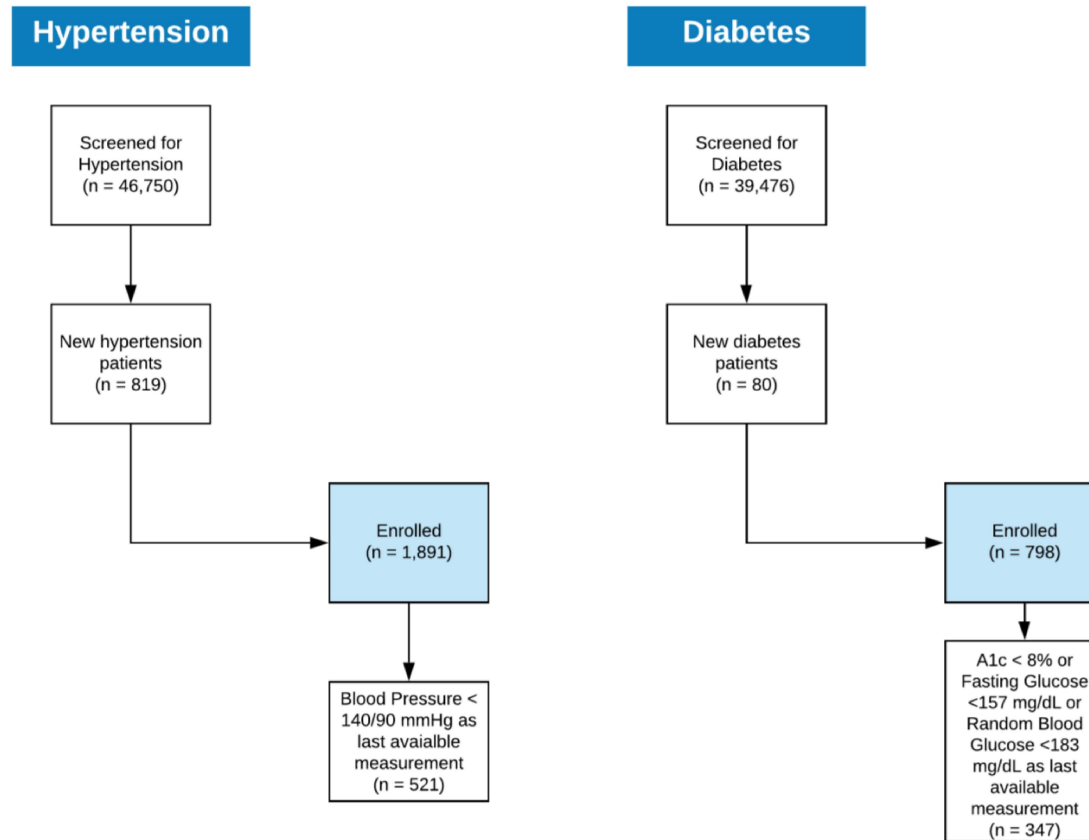


Table SA1.5 – Monitoring indicator results for Shimla, India

Definition	Shimla
Awareness activities	87,151
Number of public screening events (“health fairs”)	336
Number of household visits made by Accredited social health activist (ASHAs), Anganwadi Worker (AWWs), and Outreach Workers (ORWs)	16,286
Total number of health workers trained	787
Number of CHWs (ASHAs) trained	473
Number of support groups/Noncommunicable diseases (NCD) meetings held	386
Number of individuals screened either for HTN or DM, according to the definitions below.	22,053
Number of individuals who attended a screening activity and: 1) reported a previous HTN diagnosis; 2) or <u>no</u> previous HTN diagnosis but had a BP reading at the time of the screening activity	22,053
Number of individuals who attended a screening activity and: 1) reported a previous DM diagnosis; 2) or <u>no</u> previous DM diagnosis but had a Random Blood Glucose (RBG) or FG reading at the time of the screening activity	22,053
Number of individuals who attended a screening activity, did not report a previous HTN diagnosis, and received a BP measurement at the time of the screening activity	20,606
Number of individuals who attended a screening activity, did not report a previous DM diagnosis, and received an RBG or FG measurement at the time of the screening activity	21,482
Of those screened for HTN, the sum of the number of individuals who reported a previous HTN diagnosis and the number of individuals without a previous HTN diagnosis that were screened with SBP $\geq$ 140mmHg or DBP $\geq$ 90mmHg	3,661
Of those screened for DM, the sum of the number of individuals who reported a previous DM diagnosis and the number of individuals without a previous DM diagnosis that were screened with RBG $\geq$ 140 mg/dl	1,471
Of those screened for HTN, the number of individuals who didn’t report a previous HTN diagnosis and were screened with SBP $\geq$ 140mmHg or DBP $\geq$ 90mmHg	2,214
Of those screened for DM, the number of individuals who didn’t report a previous DM diagnosis and were screened with RBG $\geq$ 140mg/dl	900
Of those screened above BP thresholds, the sum of the number of patients who reported a previous HTN diagnosis and the number of individuals without a previous diagnosis for HTN who received a confirmatory HTN diagnosis	2,002
Of those screened above blood glucose thresholds, the sum of the number of patients who reported a previous DM diagnosis and the number of individuals without a previous diagnosis for DM who received a confirmatory DM diagnosis	627
Number of patients without a previous diagnosis for HTN who received a confirmatory HTN diagnosis	555
Number of patients without a previous diagnosis for DM who received a confirmatory DM diagnosis	56
Number of patients who received a confirmatory diagnosis for DM and HTN and who did not report a previous diagnosis for either HTN or DM (or both HTN and DM)	9
Average time (days) between screening above BP thresholds and initial clinic visit among patients who were referred to, and visited, a health facility for HTN	39.66
Average time (days) between screening above blood glucose thresholds and initial clinic visit among patients who were referred to, and visited a health facility for DM	38.63

Definition	Shimla (cont.)
Number of individuals with a referral for HTN that have accessed a clinic for confirmatory testing/consultation	1,373
Number of individuals with a referral for HTN that have accessed a clinic for confirmatory testing/consultation within 45 days of referral	965
Number of individuals with a referral for DM that have accessed a clinic for confirmatory testing/consultation	473
Number of individuals with a referral for DM that have accessed a clinic for confirmatory testing/consultation within 45 days of referral	333
Number of individuals with a referral for HTN and DM that have accessed a clinic for confirmatory testing/consultation	164
Number of individuals with a referral for HTN and DM that have accessed a clinic for confirmatory testing/consultation within 45 days of referral	115
HTN patients with no previous diagnosis that were prescribed pharmacotherapy	205
DM patients with no previous diagnosis that were prescribed pharmacotherapy	70
Average number of follow-up visits per year for HTN patients (excludes initial visit)	3.1
Average number of follow-up visits per year for DM patients (excludes initial visit)	3.2
Patients enrolled for HTN with BP < 140/90mmHg at last available measurement	330
Patients enrolled for DM with A1c < 8%/FG<157/RBG<183 as last available measurement	253
Average change in SBP, among those enrolled for HTN with at least 2 readings available (Last SBP - First SBP)	15
Patients with SBP decreases $\geq 10\%$ , among those enrolled for HTN with at least 2 readings available (Last SBP - First SBP)	521
Patients with SBP increases $\geq 10\%$ , among those enrolled for HTN with at least 2 readings available (Last SBP - First SBP)	46
Patients whose BP has moved to a lower category, among those enrolled for HTN with at least 2 BP readings	442
Patients whose BP has moved to a higher category, among those enrolled for HTN with at least 2 BP readings	66

Table SA1.6 – Monitoring indicator results for Udaipur, India

Definition	Udaipur
Awareness activities	59,869
Number of public screening events (“health fairs”)	128
Total number of health workers trained	1,060
Number of CHWs (ASHAs) trained	543
Number of support groups/NCD meetings held	258
Number of patients who attended support groups during the project	3,487
Number of individuals screened either for HTN or DM, according to the definitions below.	26,559
Number of individuals who attended a screening activity and: 1) reported a previous HTN diagnosis; 2) or <u>no</u> previous HTN diagnosis but had a BP reading at the time of the screening activity	26,559
Number of individuals who attended a screening activity and: 1) reported a previous DM diagnosis; 2) or <u>no</u> previous DM diagnosis but had a RBG or FG reading at the time of the screening activity	18,166
Number of individuals who attended a screening activity, did not report a previous HTN diagnosis, and received a BP measurement at the time of the screening activity	26,144
Number of individuals who attended a screening activity, did not report a previous DM diagnosis, and received an RBG or FG measurement at the time of the screening activity	17,994
Of those screened for HTN, the sum of the number of individuals who reported a previous HTN diagnosis and the number of individuals without a previous HTN diagnosis that were screened with SBP $\geq$ 140mmHg or DBP $\geq$ 90mmHg	1,250
Of those screened for DM, the sum of the number of individuals who reported a previous DM diagnosis and the number of individuals without a previous DM diagnosis that were screened with RBG $\geq$ 140 mg/dl	1,011
Of those screened for HTN, the number of individuals who didn’t report a previous HTN diagnosis and were screened with SBP $\geq$ 140mmHg or DBP $\geq$ 90mmHg	835
Of those screened for DM, the number of individuals who didn’t report a previous DM diagnosis and were screened with RBG $\geq$ 140mg/dl	839
Of those screened above BP thresholds, the sum of the number of patients who reported a previous HTN diagnosis and the number of individuals without a previous diagnosis for HTN who received a confirmatory HTN diagnosis	679
Of those screened above blood glucose thresholds, the sum of the number of patients who reported a previous DM diagnosis and the number of individuals without a previous diagnosis for DM who received a confirmatory DM diagnosis	279
Number of patients without a previous diagnosis for HTN who received a confirmatory HTN diagnosis	264
Number of patients without a previous diagnosis for DM who received a confirmatory DM diagnosis	107
Number of patients who received a confirmatory diagnosis for DM and HTN and who did not report a previous diagnosis for either HTN or DM (or both HTN and DM)	26
Average time (days) between screening above BP thresholds and initial clinic visit among patients who were referred to, and visited, a health facility for HTN	4.14
Average time (days) between screening above blood glucose thresholds and initial clinic visit among patients who were referred to, and visited a health facility for DM	2.76

Definition	Udaipur (cont.)
Number of individuals with a referral for HTN that have accessed a clinic for confirmatory testing/consultation	581
Number of individuals with a referral for HTN that have accessed a clinic for confirmatory testing/consultation within 28 days of referral	580
Number of individuals with a referral for DM that have accessed a clinic for confirmatory testing/consultation	325
Number of individuals with a referral for DM that have accessed a clinic for confirmatory testing/consultation within 28 days of referral	325
Number of individuals with a referral for HTN and DM that have accessed a clinic for confirmatory testing/consultation	203
Number of individuals with a referral for HTN and DM that have accessed a clinic for confirmatory testing/consultation within 28 days of referral	203
HTN patients with no previous diagnosis that were prescribed pharmacotherapy	297
DM patients with no previous diagnosis that were prescribed pharmacotherapy	76
Average number of follow-up visits per year for HTN patients (excludes initial visit)	2.9
Average number of follow-up visits per year for DM patients (excludes initial visit)	2.9
Patients enrolled for HTN with BP < 140/90mmHg at last available measurement	191
Patients enrolled for DM with A1c < 8%/FG<157/RBG<183 as last available measurement	94
Average change in SBP, among those enrolled for HTN with at least 2 readings available (Last SBP - First SBP)	1.6
Patients with SBP decreases $\geq 10\%$ , among those enrolled for HTN with at least 2 readings available (Last SBP - First SBP)	185
Patients with SBP increases $\geq 10\%$ , among those enrolled for HTN with at least 2 readings available (Last SBP - First SBP)	86
Patients whose BP has moved to a lower category, among those enrolled for HTN with at least 2 BP readings	175
Patients whose BP has moved to a higher category, among those enrolled for HTN with at least 2 BP readings	110



Figure SA1.3 – Flowchart of HealthRise participants in South Africa.

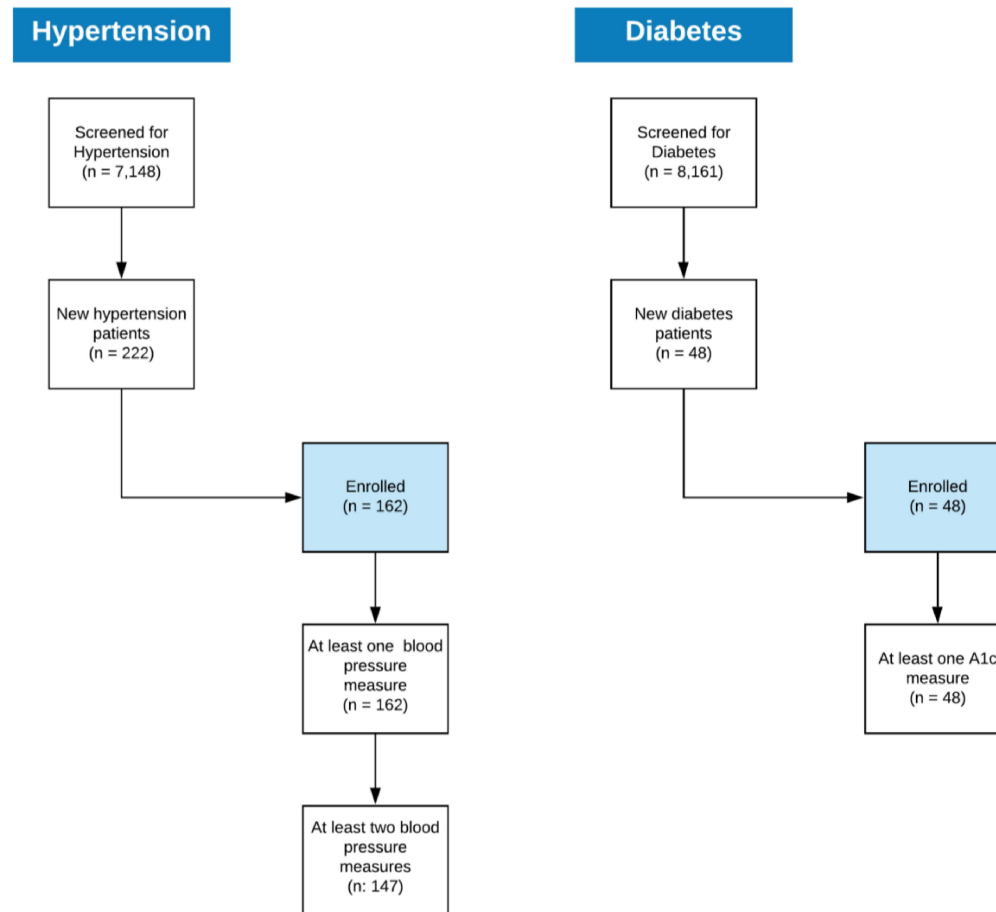


Table SA1.7 – Monitoring indicator results for Pixley ka Seme, South Africa

Definition	Pixley ka Seme
Number of risk assessments	3,816
Number of public screening events (“health fairs”) [includes workplace, household, and support group events]	1,389
Total number of health workers trained: PSI + CHWs + facility staff	461
Number of CHWs trained	327
Number of support groups and/or NCD club meetings held	2
Number of support groups started during the project [includes 5-step groups, garden groups, and village savings & loan groups]	94
Number of patients who attended a screening activity and: 1) reported a previous HTN diagnosis; 2) or <u>no</u> previous HTN diagnosis but had a BP reading at the time of the screening activity	3,789
Number of individuals who attended a screening activity and: 1) reported a previous DM diagnosis; 2) or no previous DM diagnosis but had a BG reading at the time of the screening activity	3,872
Number of individuals screened for HTN who reported no previous HTN diagnosis	2,366
Number of individuals screened for DM who reported no previous DM diagnosis	3,570
Of those screened for HTN, the number of individuals with SBP $\geq$ 140mmHg or DBP $\geq$ 90mmHg (regardless of previous diagnosis)	1,413
Of those screened for DM, the number of individuals with non-fasting RBG $\geq$ 11.1 mmol/L (regardless of previous diagnosis)	224
Of those screened for HTN, number of individuals who didn’t report a previous HTN diagnosis and measured SBP $\geq$ 140mmHg or DBP $\geq$ 90mmHg	677
Of those screened for DM, number of individuals who didn’t report a previous DM diagnosis and measured non-fasting RBG $\geq$ 11.1 mmol/L	71
Number of individuals diagnosed and confirmed for HTN (regardless of previous diagnosis)	142
Number of individuals diagnosed and confirmed for DM (regardless of previous diagnosis)	33
Number of individuals diagnosed with HTN who reported no previous HTN diagnosis	93
Number of individuals diagnosed with DM who reported no previous DM diagnosis	24
Number of patients who were referred to a clinic after screening and initiated treatment for hypertension (includes newly diagnosed individuals and individuals who reported a previous HTN diagnosis)	106
Number of patients who were referred to a clinic after screening and initiated treatment for diabetes (includes newly diagnosed individuals and individuals who reported a previous diagnosis)	27
Of those with a confirmed HTN diagnosis (new and existing), the number of individuals who received a monitoring visit with a BP measurement	98
Of those with a confirmed DM diagnosis (new and existing), those who received a monitoring visit with a blood glucose measurement	31
Number of patients enrolled for hypertension with 2 or more SBP measurements	88

Definition	Pixley ka Seme (cont.)
Of those with a confirmed HTN diagnosis, the number of patients with SBP < 140mmHg / DBP < 90mmHg at the time of the most recently available measurement. (Only includes individuals with 1 or more monitoring visits.)	53
Of those with a confirmed DM diagnosis, the number of patients with RBS reading $\leq$ 7.8 mmol/L at the time of the most recently available measurement. (Only includes individuals with 1 or more monitoring visits.)	9
Average change in SBP, among those enrolled for HTN with at least 2 readings available (Last SBP - First SBP)	-21.47
Patients with SBP decreases $\geq$ 10%, among those enrolled for HTN with at least 2 readings available (Last SBP - First SBP)	49
Patients with SBP increases $\geq$ 10%, among those enrolled for HTN with at least 2 readings available (Last SBP - First SBP)	4
Patients whose BP has moved to a lower category, among those enrolled for HTN with at least 2 BP readings	74
Patients whose BP has moved to a higher category, among those enrolled for HTN with at least 2 BP readings	5

Table SA1.8 – Monitoring indicator results for uMgungundlovu, South Africa

Definition	uMgungundlovu
Number of risk assessments	4711
Number of public screening events (“health fairs”) [includes workplace, household, and support group events]	7324
Total number of health workers trained: PSI + facility staff + CCGs	317
Number of CCGs trained	269
Number of support groups and/or NCD club meetings held	64
Number of DOH workers trained (includes in-facility staff who are employed by DOH)	267
Number of support groups started during the project	7
Number of War Room meetings held	26
Number of individuals who attended a screening activity and: 1) reported a previous HTN diagnosis; 2) or <u>no</u> previous HTN diagnosis but had a BP reading at the time of the screening activity	8456
Number of individuals who attended a screening activity and: 1) reported a previous DM diagnosis; 2) or no previous DM diagnosis but had a BG reading at the time of the screening activity	6248
Number of individuals screened for HTN who reported no previous HTN diagnosis	4782
Number of individuals screened for DM who reported no previous DM diagnosis	4591
Of those screened for HTN, the number of individuals with SBP $\geq$ 140mmHg or DBP $\geq$ 90mmHg (regardless of previous diagnosis)	2939
Of those screened for DM, the number of individuals with non-fasting RBS $\geq$ 11.1 mmol/L (regardless of previous diagnosis)	489
Of those screened for HTN, number of individuals who didn’t report a previous HTN diagnosis and measured SBP $\geq$ 140mmHg or DBP $\geq$ 90mmHG	1216
Of those screened for DM, number of individuals who didn’t report a previous DM diagnosis and measured non-fasting RBG $\geq$ 11.1 mmol/L	129
Number of diagnosed and confirmed for HTN (regardless of previous diagnosis)	545
Number of diagnosed and confirmed for DM (regardless of previous diagnosis)	136
Number of individuals diagnosed with HTN who reported no previous HTN diagnosis	129
Number of individuals diagnosed with DM who reported no previous DM diagnosis	24
Number of patients who were referred to a clinic after screening and initiated treatment for hypertension (includes newly diagnosed individuals and individuals who reported a previous HTN diagnosis)	321
Number of patients who were referred to a clinic after screening and initiated treatment for diabetes (includes newly diagnosed individuals and individuals who reported a previous diagnosis)	72
Of those with a confirmed HTN diagnosis (new and existing), the number of individuals who received a monitoring visit with a BP measurement	64
Of those with a confirmed DM diagnosis (new and existing), those who received a monitoring visit with a blood glucose measurement	17
Number of patients enrolled for hypertension with 2 or more SBP measurements	59

Definition	uMgungundlovu (cont.)
Of those with a confirmed HTN diagnosis, the number of patients with SBP < 140mmHg / DBP < 90mmHg at the time of the most recently available measurement. (Only includes individuals with 1 or more monitoring visits.)	24
Of those with a confirmed DM diagnosis, the number of patients with RBG reading <= 7.8 mmol/L at the time of the most recently available measurement. (Only includes individuals with 1 or more monitoring visits.)	1
Average change in SBP, among those enrolled for HTN with at least 2 readings available (Last SBP - First SBP)	-5.24
Patients with SBP decreases >=10%, among those enrolled for HTN with at least 2 readings available (Last SBP - First SBP)	19
Patients with SBP increases >=10%, among those enrolled for HTN with at least 2 readings available (Last SBP - First SBP)	6
Patients whose BP has moved to a lower category, among those enrolled for HTN with at least 2 BP readings	19
Patients whose BP has moved to a higher category, among those enrolled for HTN with at least 2 BP readings	8

Figure SA1.4 – Flowchart of HealthRise participants in the United States.

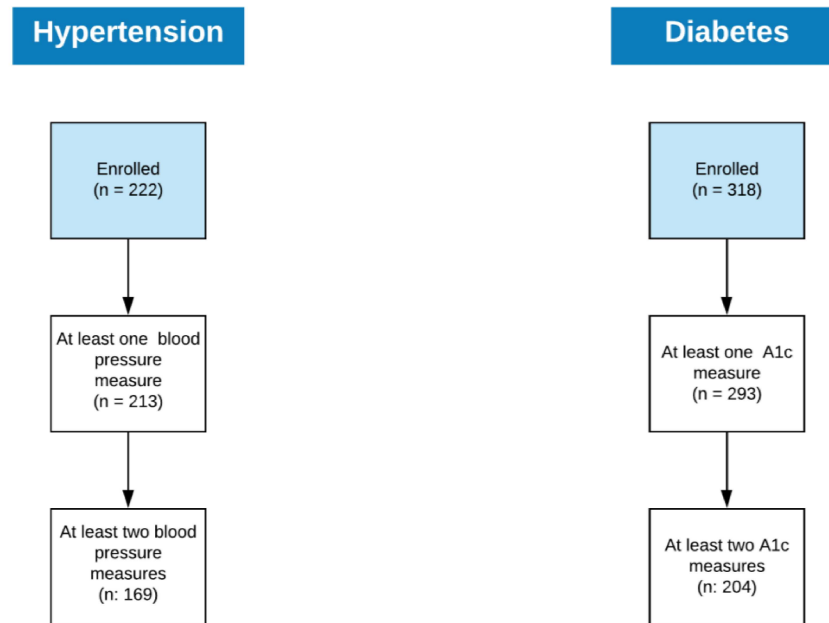


Table SA1.9 – Monitoring indicator results for Ramsey County, USA

Definition	Ramsey County
Total number of health workers trained	13
Number of CHWs trained	5
Total number of patients enrolled either for HTN or DM, according to the definitions below	78
Number of patients with a final diagnosis of HTN that have attended at least one consultation at the health facility	33
Number of patients with a final diagnosis of DM that have attended at least one consultation at the health facility	69
Number of patients with a final HTN diagnosis with at least one BP reading available	32
Number of patients with a final DM diagnosis with at least one A1c reading available	69
Number of patients with a final HTN diagnosis with at least two BP readings available	21
Number of patients with a final DM diagnosis with at least two A1c readings available	42
Total numbers of patients controlled for DM or HTN, according to the definitions below	16
Number of patients enrolled for HTN with BP < 140/90mmHg at last available reading	10
Number of patients enrolled for DM with A1c < 8% at last available reading	12
Average change in SBP, among those enrolled for HTN with at least 2 readings available (Last SBP - First SBP)	-5.67
Average change in A1c, among those enrolled for DM with at least 2 readings available (Last A1c - First A1c)	-1.56
Number of patients with SBP decrease $\geq 10\%$ , among those enrolled for HTN with at least 2 readings available (Last SBP - First SBP)	13
Number of patients with A1c decrease $\geq 10\%$ , among those enrolled for DM with at least 2 readings available (Last A1c - First A1c)	23
Number of patients with SBP increase $\geq 10\%$ , among those enrolled for HTN with at least 2 readings available (Last SBP - First SBP)	8
Number of patients with A1c increase $\geq 10\%$ , among those enrolled for DM with at least 2 readings available (Last A1c - First A1c)	3
Average change in SBP, among those enrolled for HTN with at least 2 readings available and showing a reduction in blood pressure	-21.54
Average change in A1C, among those enrolled for DM with at least 2 readings available and showing a reduction in blood glucose	-2.22
Number of patients whose BP has moved to a lower category, among those enrolled for HTN with at least 2 BP readings	10
Number of patients whose A1c has moved to a lower category, among those enrolled for DM with at least 2 A1c readings	13
Number of patients whose BP has moved to a higher category, among those enrolled for HTN with at least 2 BP readings	4
Number of patients whose A1c has moved to a higher category, among those enrolled for DM with at least 2 A1c readings	11

Table SA1.10 – Monitoring indicator results for Rice County, USA

Definition	Rice County
Total number of health workers trained	9
Number of CHWs trained	2
Total number of patients enrolled either for HTN or DM, according to the definitions below	208
Number of patients with a final diagnosis of HTN that have attended at least one consultation at the health facility	87
Number of patients with a final diagnosis of DM that have attended at least one consultation at the health facility	149
Number of patients with a final HTN diagnosis with at least one BP reading available	79
Number of patients with a final DM diagnosis with at least one A1c reading available	124
Number of patients with a final HTN diagnosis with at least two BP readings available	76
Number of patients with a final DM diagnosis with at least two A1c readings available	108
Total number of patients controlled for DM or HTN, according to the definitions below	74
Number of patients enrolled for HTN with BP < 140/90mmHg at last available reading	45
Number of patients enrolled for DM with A1c < 8% at last available reading	53
Average change in SBP, among those enrolled for HTN with at least 2 readings available (Last SBP - First SBP)	-2.51
Average change in A1c, among those enrolled for DM with at least 2 readings available (Last A1c - First A1c)	-0.47
Number of patients with SBP decrease $\geq 10\%$ , among those enrolled for HTN with at least 2 readings available (Last SBP - First SBP)	18
Number of patients with A1c decrease $\geq 10\%$ , among those enrolled for DM with at least 2 readings available (Last A1c - First A1c)	34
Number of patients with SBP increase $\geq 10\%$ , among those enrolled for HTN with at least 2 readings available (Last SBP - First SBP)	9
Number of patients with A1c increase $\geq 10\%$ , among those enrolled for DM with at least 2 readings available (Last A1c - First A1c)	21
Average change in SBP, among those enrolled for HTN with at least 2 readings available and moved to a lower BP category	-9.75
Average change in A1C, among those enrolled for DM with at least 2 readings available and moved to a lower A1C category	-1.78
Number of patients whose BP has moved to a lower category, among those enrolled for HTN with at least 2 BP readings	23
Number of patients whose A1c has moved to a lower category, among those enrolled for DM with at least 2 A1c readings	31
Number of patients whose BP has moved to a higher category, among those enrolled for HTN with at least 2 BP readings	18
Number of patients whose A1c has moved to a higher category, among those enrolled for DM with at least 2 A1c readings	17



Table SA1.11 – Monitoring indicator results for Hennepin County, USA

Definition	Hennepin County
Total number of health workers trained	11
Number of CHWs trained	6
Total number of patients enrolled either for HTN or DM, according to the definitions below	121
Number of patients with a final diagnosis of HTN that have attended at least one consultation at the health facility	102
Number of patients with a final diagnosis of DM that have attended at least one consultation at the health facility	100
Number of patients with a final HTN diagnosis with at least one BP reading available	102
Number of patients with a final DM diagnosis with at least one A1c reading available	100
Number of patients with a final HTN diagnosis with at least two BP readings available	72
Number of patients with a final DM diagnosis with at least two A1c readings available	54
Total number of patients controlled for DM or HTN, according to the definitions below	68
Number of patients enrolled for HTN with BP < 140/90mmHg at last available reading	55
Number of patients enrolled for DM with A1c < 8% at last available reading	26
Average change in SBP, among those enrolled for HTN with at least 2 readings available (Last SBP - First SBP)	-3.38
Average change in A1c, among those enrolled for DM with at least 2 readings available (Last A1c - First A1c)	-0.92
Number of patients with SBP decrease $\geq 10\%$ , among those enrolled for HTN with at least 2 readings available (Last SBP - First SBP)	22
Number of patients with A1c decrease $\geq 10\%$ , among those enrolled for DM with at least 2 readings available (Last A1c - First A1c)	22
Number of patients with SBP increase $\geq 10\%$ , among those enrolled for HTN with at least 2 readings available (Last SBP - First SBP)	13
Number of patients with A1c increase $\geq 10\%$ , among those enrolled for DM with at least 2 readings available (Last A1c - First A1c)	6
Average change in SBP, among those enrolled for HTN with at least 2 readings available and showing a reduction in blood pressure	-13.44
Average change in A1C, among those enrolled for DM with at least 2 readings available and showing a reduction in blood glucose	-1.87
Number of patients whose BP has moved to a lower category, among those enrolled for HTN with at least 2 BP readings	21
Number of patients whose A1c has moved to a lower category, among those enrolled for DM with at least 2 A1c readings	22
Number of patients whose BP has moved to a higher category, among those enrolled for HTN with at least 2 BP readings	5
Number of patients whose A1c has moved to a higher category, among those enrolled for DM with at least 2 A1c readings	6