

Supplementary Materials: Tspan8 Drives Melanoma Dermal Invasion by Promoting ProMMP-9 Activation and Basement Membrane Proteolysis in a Keratinocyte-Dependent Manner

Manale El Kharbili, Muriel Cario, Nicolas Béchetoille, Catherine Pain, Claude Boucheix, Françoise Degoul, Ingrid Masse and Odile Berthier-Vergnes

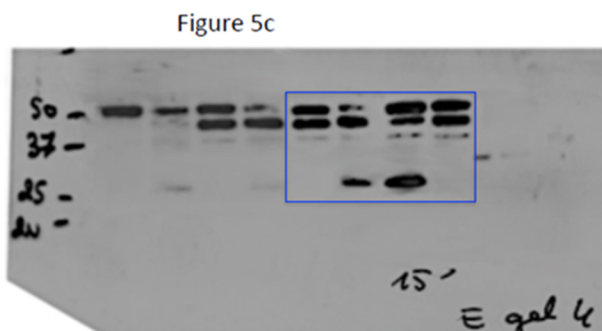
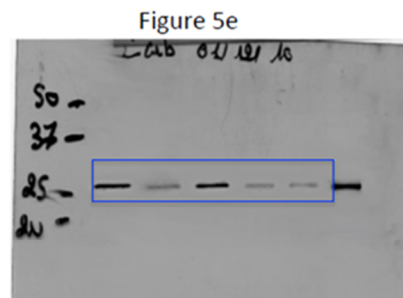
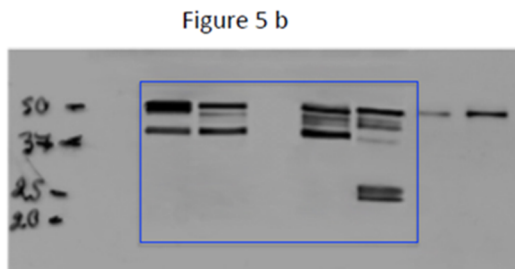
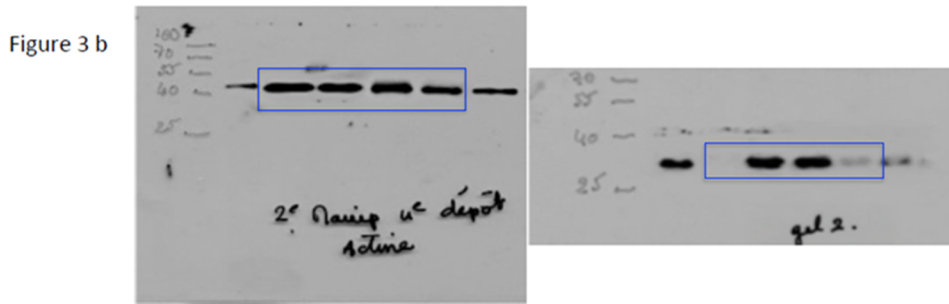
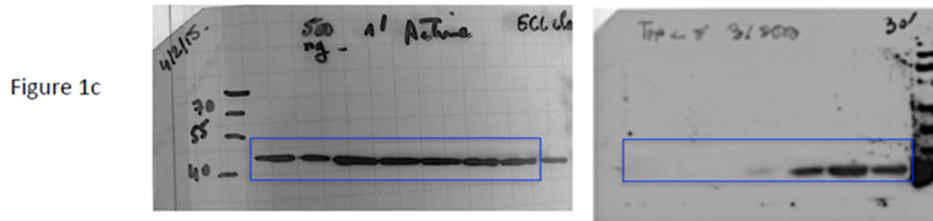


Figure S1. Uncropped western blot figures.

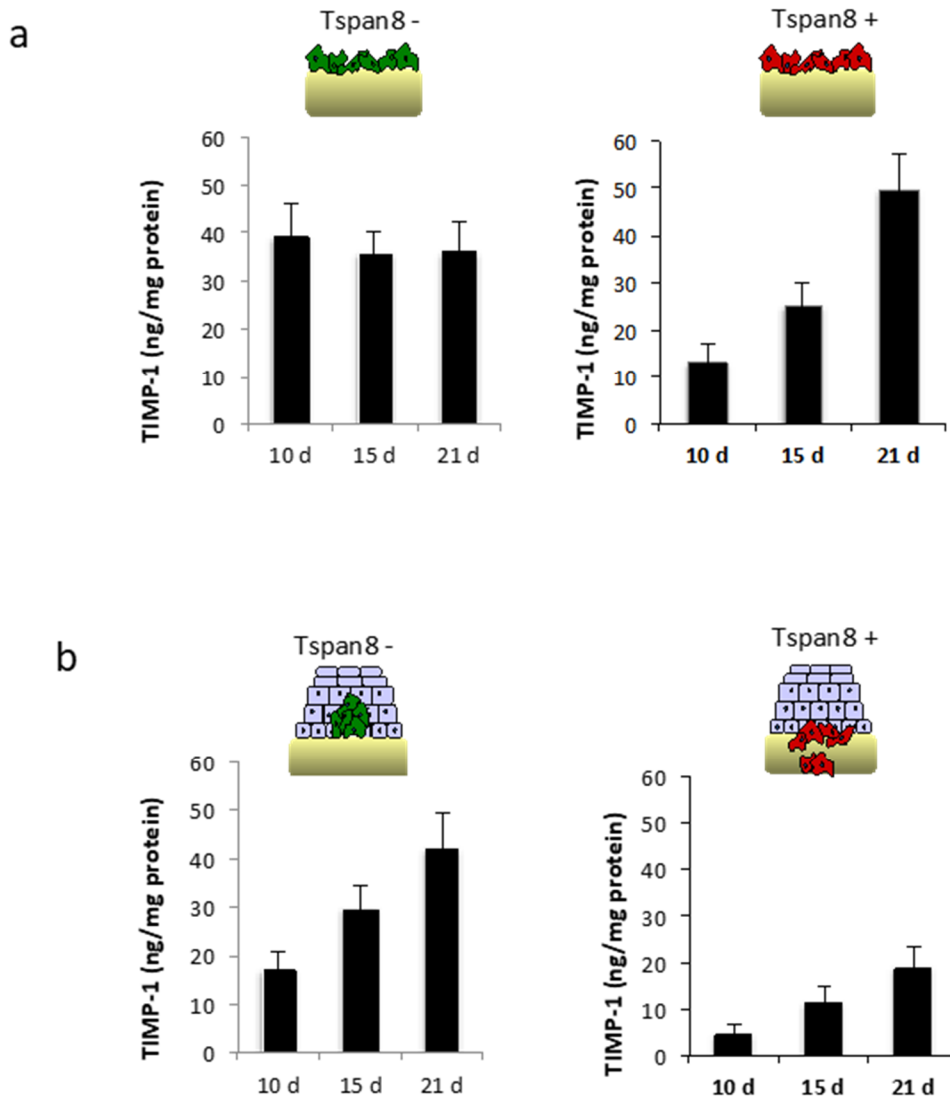


Figure S2. Low TIMP-1 levels were exclusively observed when melanoma cells expressed Tspan8 and were integrated into SR. **(a,b)** Supernatants TIMP-1 protein levels were measured at day 10, 15 and 21 by ELISA in composites consisting of melanoma cells expressing or not Tspan8 cultured on acellular dermis either alone **(a)** or with human keratinocytes **(b)**. Results are represented as the mean \pm SEM from three independent experiments.

