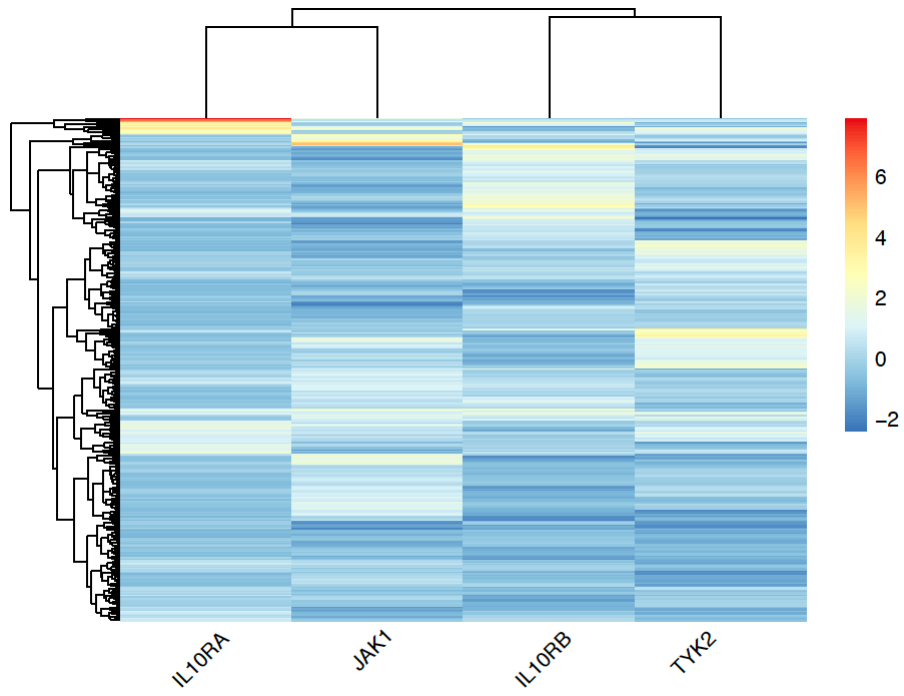
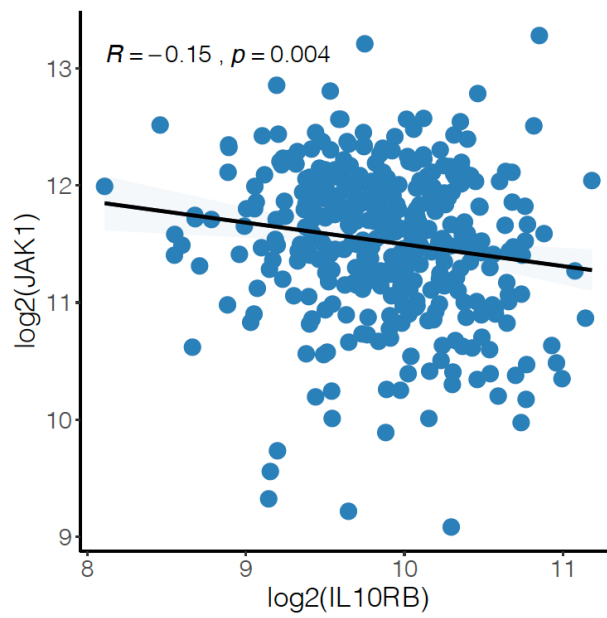
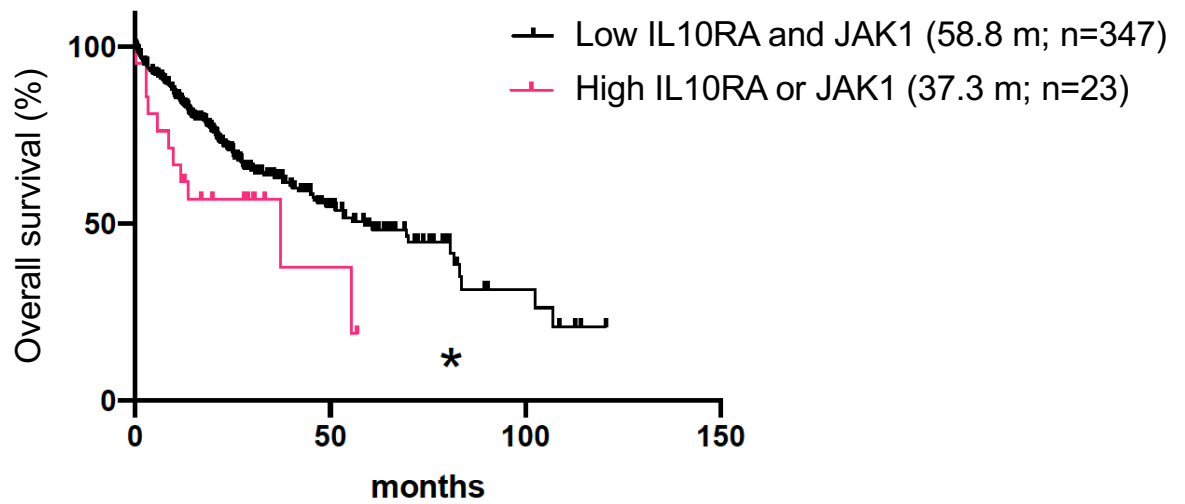


## Supplementary Figure Legend

**Fig. S1. Analysis of downstream effectors of IL-10 pathway using The Cancer Genome Atlas (TCGA) data.** **A**, As expected, expression of *IL10RA*, *JAK1*, *IL10RB*, *JAK1* and *TYK2* clustered in the analyzed tumor samples. **B**, Significant correlation between *IL10RA* and *JAK1* expression in HCC tissues. **C**, Using a threshold of  $>2$  z-score for mRNA expression for both *IL10RA* and *JAK1*, we found that tumors with high levels of *IL10RA* or *JAK1* had a median overall-survival of 37.29 months, compared to control tumors (58.84 months,  $P = 0.0210$ , Chi square).

**A****B****C**

**Supplementary Table S1: Comparison of preoperative plasma versus serum biomarkers in patients undergoing liver resection.** Data are shown as median values and interquartile ranges, with p values from the exact Wilcoxon/exact Fisher test.

<b>Biomarker</b>	<b>Plasma (n)</b>	<b>Serum (n)</b>	<b>p-value</b>
<b>IFN-<math>\gamma</math> (pg/ml)</b>	7.5 [5.6,12.8] (45)	9.2 [5.2,14.3] (69)	0.56
<b>IL-6 (pg/ml)</b>	1.60 [1.60,4.31] (45)	2.27 [1.60,5.06] (69)	0.24
<b>IL-8 (pg/ml)</b>	12.8 [7.3,18.5] (45)	31.3 [22.1,57.1] (69)	<0.0001
<b>IL-10 (pg/ml)</b>	0.77 [0.57,1.99] (45)	0.91 [0.63,1.50] (69)	0.57
<b>TNF-<math>\alpha</math> (pg/ml)</b>	3.4 [2.7,4.1] (45)	3.7 [2.7,4.7] (69)	0.43
<b>bFGF (pg/ml)</b>	3.8 [2.5,8.5] (45)	6.7 [3.0,19.6] (69)	0.027
<b>PIGF (pg/ml)</b>	34.5 [25.3,42.9] (45)	35.9 [29.3,43.1] (69)	0.48
<b>sVEGFR1-1 (pg/ml)</b>	115 [86,217] (45)	95 [76,114] (69)	0.013
<b>sTIE2 (pg/ml)</b>	5386 [4618,7415] (45)	4602 [3580,5956] (69)	0.0089
<b>VEGF (pg/ml)</b>	84 [42,148] (45)	502 [223,1014] (69)	<0.0001
<b>VEGF-C (pg/ml)</b>	98 [89,193] (45)	515 [267,747] (69)	<0.0001
<b>VEGF-D (pg/ml)</b>	696 [542,986] (45)	1156 [933,1662] (69)	<0.0001
<b>AFP (ng/ml)</b>	12.5 [5.6,20.0] (32)	13.5 [3.7,20.0] (69)	0.77

AFP, alphafetoprotein; bFGF, basic fibroblast growth factor; IFN, interferon; IL, interleukin; LR liver resection; LT, liver transplantation; PIGF, placental growth factor; sTIE2, soluble angiopoietin receptor; VEGF, vascular endothelial growth factor; VEGFR, VEGF receptor; TNF, tumor necrosis factor.

**Supplementary Table S2. Analysis of clinical parameters and circulating biomarker of interest stratified by Milan criteria in HCC patients undergoing liver transplantation.**

<b>Biomarkers</b>	<b>Within Milan Criteria</b>	<b>Outside Milan Criteria</b>	<b>P-value</b>
<b>Number of deaths</b>	11/34 pts (32.4%)	5/13 pts (38.5%)	0.74
<b>Number of deaths or recurrences</b>	11/34 pts (32.4%)	6/13 pts (46.2%)	0.50
<b>AFP (&gt;20 ng/ml)</b>	12/34 pts (35.3%)	2/13 pts (15.4%)	0.29
<b>AFP truncated at 20 ng/ml</b>	8.1 [3.5, 20.0] (n=34)	7.8 [3.3, 9.2] (n=13)	0.49
<b>VEGF (pg/ml)</b>	80.3 [40.4, 248.6] (n=34)	106.5 [40.0, 210.9] (n=13)	0.95
<b>VEGF-C (pg/ml)</b>	138.6 [89.0, 180.2] (n=34)	121.1 [89.4, 144.0] (n=13)	0.65

AFP, alphafetoprotein; VEGF, vascular endothelial growth factor.