

## *Supplementary Material*

### **Sward type alters the relative abundance of members of the rumen microbial ecosystem in dairy cows**

**Authors:** Paul E. Smith<sup>1,2</sup>, Daniel Enriquez-Hidalgo<sup>3,4,5</sup>, Deirdre Hennessy<sup>3</sup>, Matthew S. McCabe<sup>1</sup> David A. Kenny<sup>1,2</sup>, Alan K. Kelly<sup>2</sup>, Sinead M. Waters<sup>1</sup>

<sup>1</sup>Teagasc, Animal and Bioscience Research Department, Animal & Grassland Research and Innovation Centre, Teagasc, Grange, Dunsany, Ireland

<sup>2</sup>UCD College of Health and Agricultural Sciences, University College Dublin, Belfield, Ireland

<sup>3</sup>Teagasc, Animal & Grassland Research and Innovation Centre, Moorepark, Fermoy, County Cork, Ireland

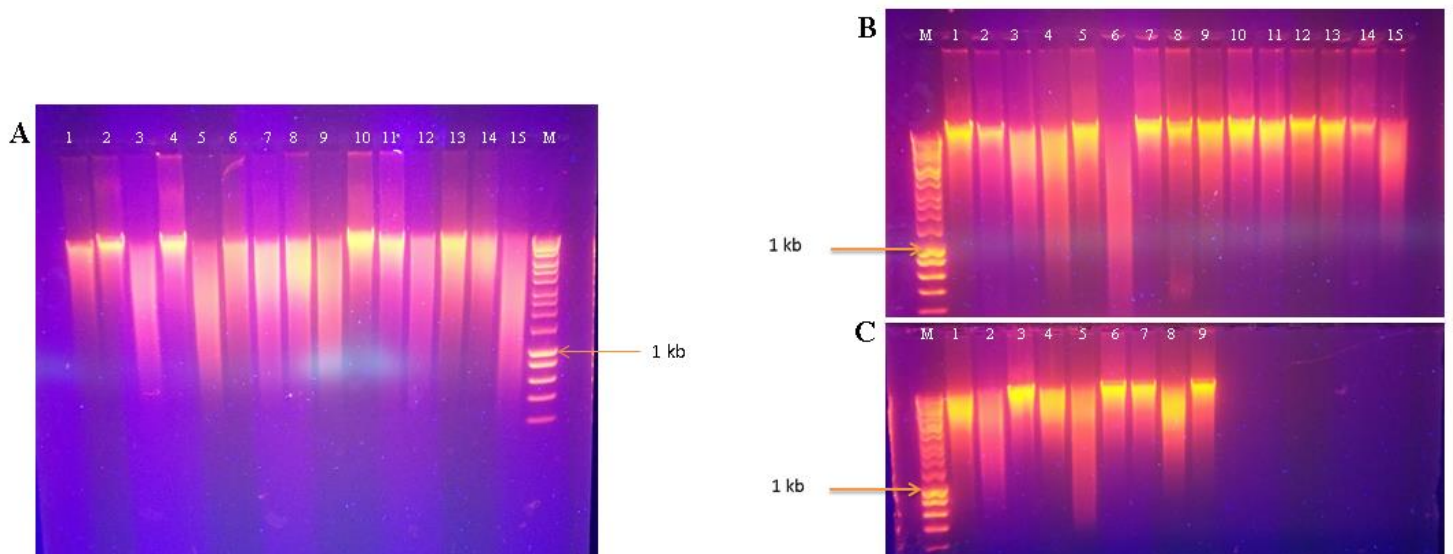
<sup>4</sup>University of Bristol, Bristol Veterinary School, Langford, Somerset, BS40 5DU, UK

<sup>5</sup>Departamento de Ciencias Animales, Facultad de Agronomía e Ingeniería Forestal, Pontificia Universidad Católica de Chile, Santiago, Chile

#### **Correspondence:**

**Prof Sinead M. Waters**

**[\\*sinead.waters@teagasc.ie](mailto:sinead.waters@teagasc.ie)**



**Supplementary Fig. 1** Quality of genomic DNA extracted from rumen samples visually assessed on a 0.8% agarose gel. Orange arrow indicates the position of the 1kb band as per the HyperLadder™ 1kb molecular weight marker (Bioline, London, UK). (A-C): rows of sample lanes; (1-15): individual sample lanes; (M) molecular weight. Samples in rows B and C were run on the same gel but have been separated by a white line for visualisation purposes.