

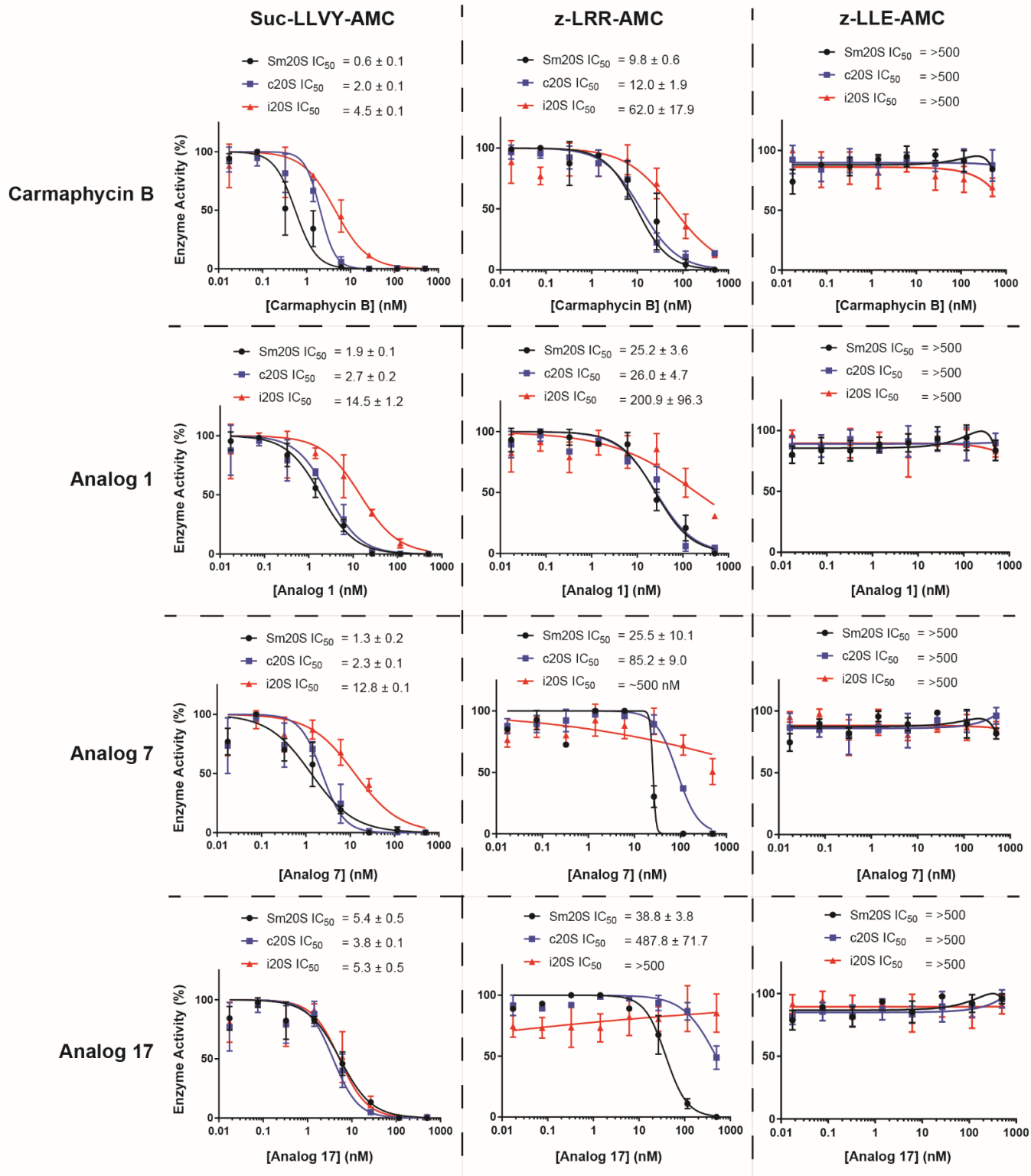
Supporting Information

The proteasome as a drug target in the metazoan pathogen, *Schistosoma mansoni*

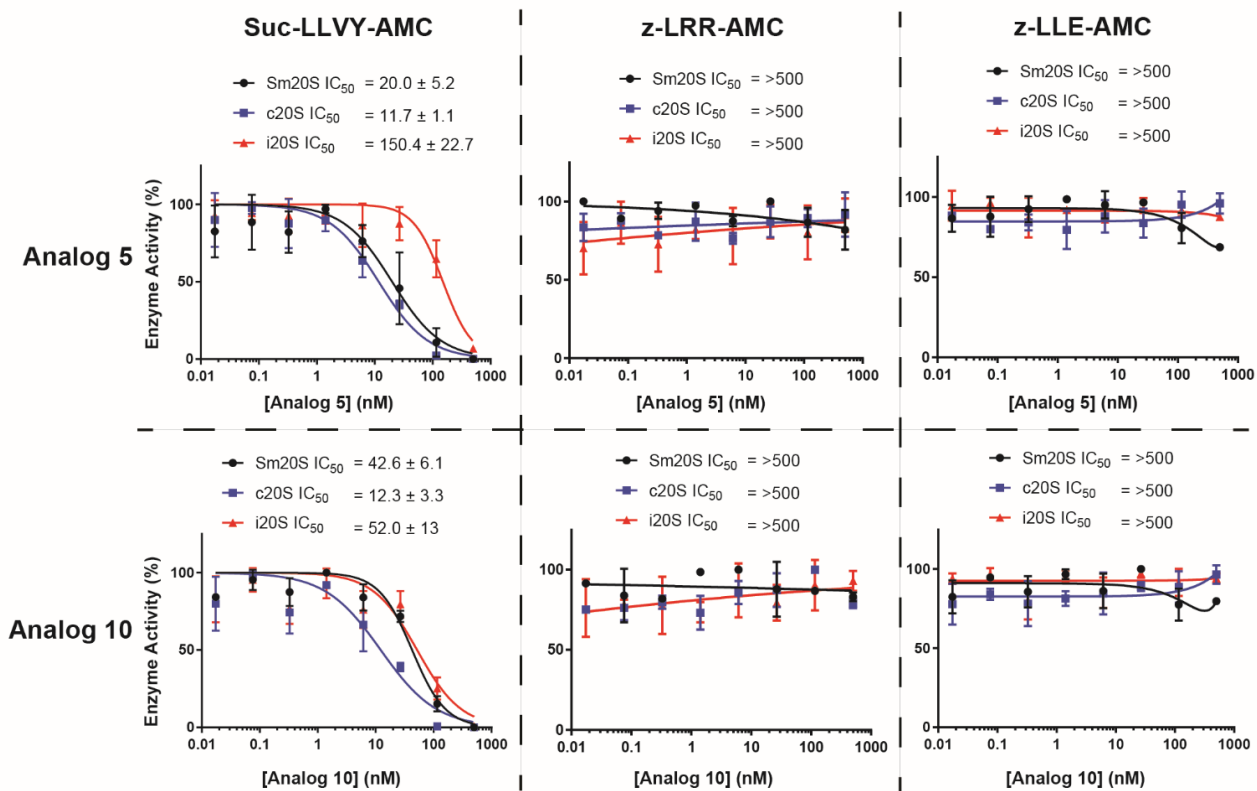
#Betsaida Bibo-Verdugo^{1,2,3}, #Steven C Wang^{1,2,4}, Jehad Almaliti^{5,6}, Anh P. Ta², Zhenze Jiang^{2,7}, Derek A. Wong², Christopher B. Lietz², Brian M. Suzuki^{1,2}, Nelly El-Sakkary^{1,2}, Vivian Hook², Guy S. Salvesen³, William H. Gerwick^{1,2,5}, *Conor R. Caffrey^{1,2}, *Anthony J. O'Donoghue^{1,2}

Table of Contents

Supplementary Figure 1	S2
Supplementary Figure 2	S3



Supplementary Figure 1. Concentration response curves for carmaphycin B and analogs 1, 7 and 17 using the subunit selective substrates, Suc-LLVY-AMC (β_5), z-LRR-AMC (β_2) and z-LLE-AMC (β_1)



Supplementary Figure 2. Concentration response curves for analog 5 and analog 10 using the subunit selective substrates, Suc-LLVY-AMC ($\beta 5$), z-LRR-AMC ($\beta 2$) and z-LLE-AMC ($\beta 1$)