

Supplementary Materials

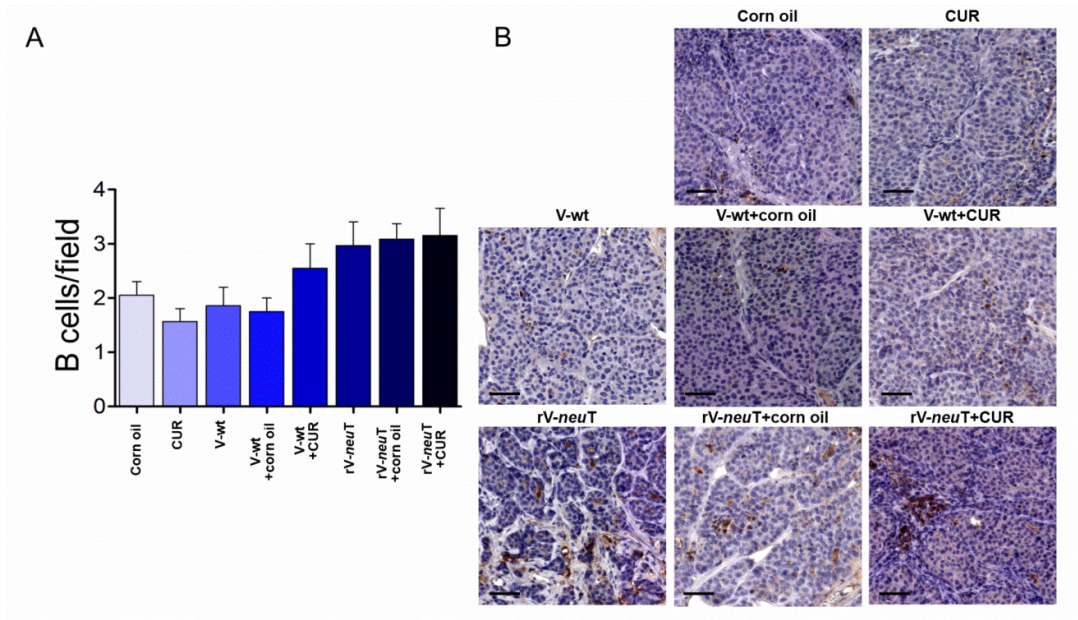


Figure S1. B cells infiltrating tumors in BALB-*neuT* mice after treatments. Tumor tissues from three mice in each group were analysed with IHC for CD19 expression. (A) Positive cell count/field averaging 10 representative microscopic field (mean±SD; 1way-ANOVA, Tukey's multiple comparison). (B) Representative digital images (20x), scale bar represents 100 μm. CUR: curcumin.

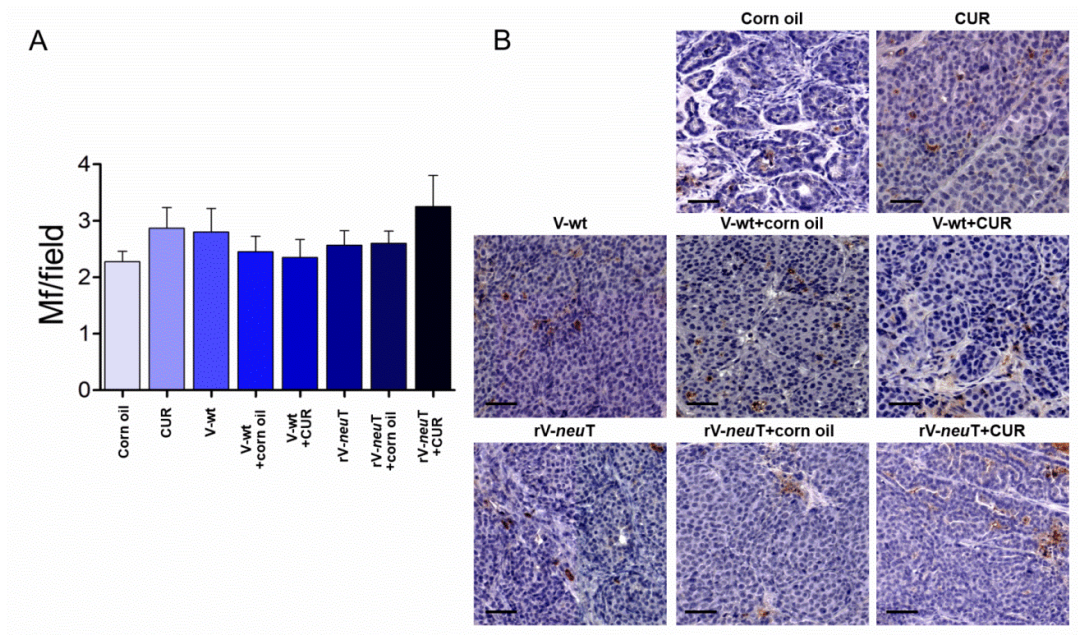


Figure S2. Macrophages infiltrating tumors in BALB-*neuT* mice after treatments. Tumor tissues from three mice in each group were analysed with IHC for f4/80 expression. (A) Positive cell count/field averaging 10 representative microscopic field (mean±SD; 1way-ANOVA, Tukey's multiple comparison). (B) Representative digital images (20x), scale bar represents 100 μm. Mf: macrophages, CUR: curcumin.

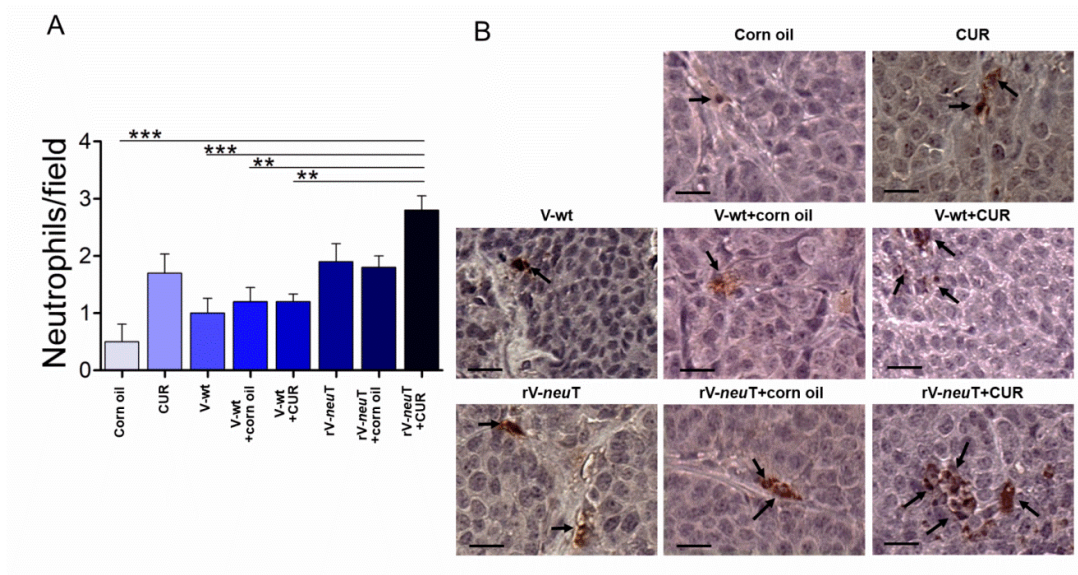


Figure S3. Neutrophils infiltrating tumors in BALB-*neuT* mice after treatments. Tumor tissues from three mice in each group were analysed with IHC for Gr1 expression (arrow). (A) Positive cell count/field averaging 10 representative microscopic field (mean \pm SD, ** $p\leq 0.01$; *** $p\leq 0.001$; 1way-ANOVA, Tukey's multiple comparison). (B) Representative digital images (40 \times), scale bar represents 50 μ m. CUR: curcumin.