

OMTM, Volume 18

Supplemental Information

Comparison of AAV-Mediated Optogenetic Vision

Restoration between Retinal Ganglion Cell

Expression and ON Bipolar Cell Targeting

Qi Lu, Tushar H. Ganjawala, Andrea Krstevski, Gary W. Abrams, and Zhuo-Hua Pan

SUPPLEMENTARY MATERIAL

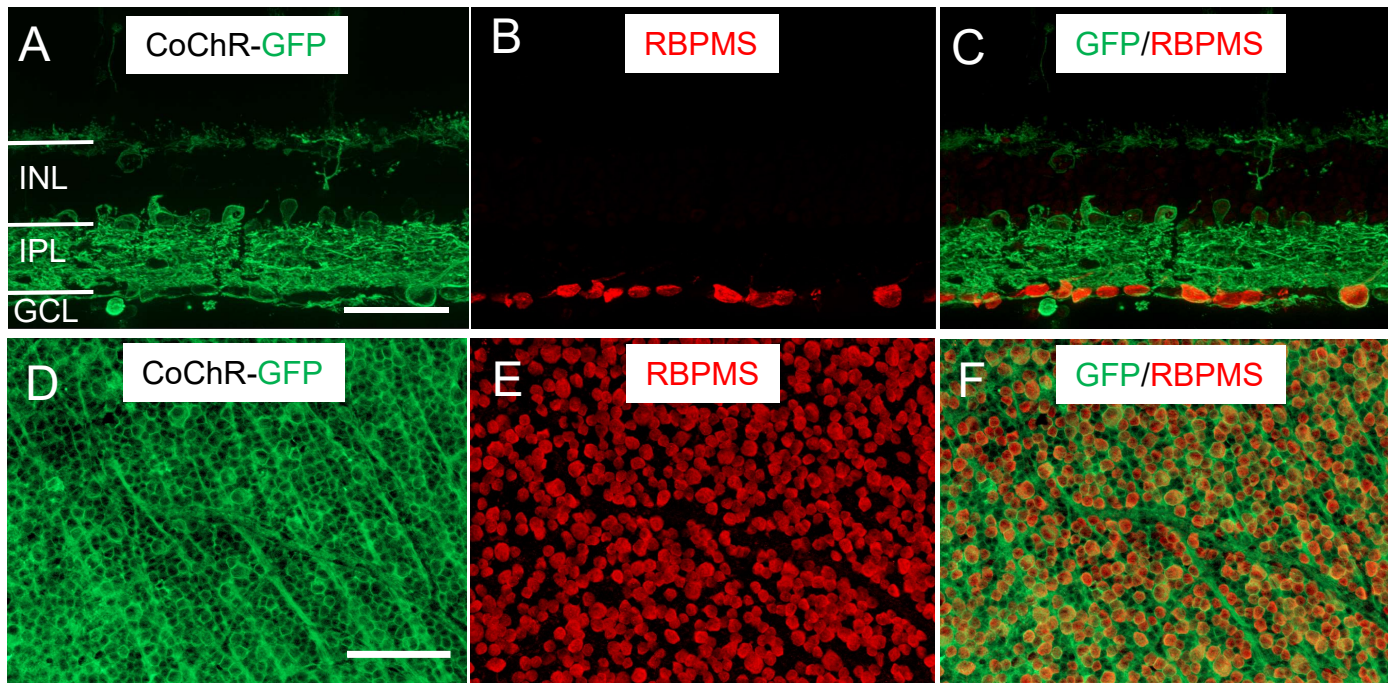


Figure S1. Expression of CoChR-GFP following ubiquitous RGC expression
Representative immunofluorescence images show the co-labeling of GFP (green) and RBPMS (red) in retinal vertical sections (A–C) and retinal whole mounts (D–F). RBPMS is an RGC-specific marker. GFP expression was observed in the vast majority of RGCs, many amacrine cells, and some horizontal cells, as evidenced in retinal vertical sections (C). The vast majority of RGCs were transduced by virus vectors based on the co-labeling of GFP and RBPMS in retinal whole mounts (F). The images of retinal whole mounts were captured with the focal plane in the retinal ganglion cell layer. Scale bars, 50 μm (A–C) and 100 μm (D–F).