

## Supplementary Materials

### Anti-Cancer Potential of *Oxialis obtriangulata* in Pancreatic Cancer Cell through Regulation of the ERK/Src/STAT3-Mediated Pathway

Eun-Jin An <sup>1,2</sup>, Yumi Kim <sup>1,2</sup>, Seung-Hyeon Lee <sup>1,2</sup>, Hyun Min Ko <sup>1,2</sup>, Won-Seok Chung <sup>1,3,\*</sup> and Hyeong-Jin Jang <sup>1,2,4,\*</sup>

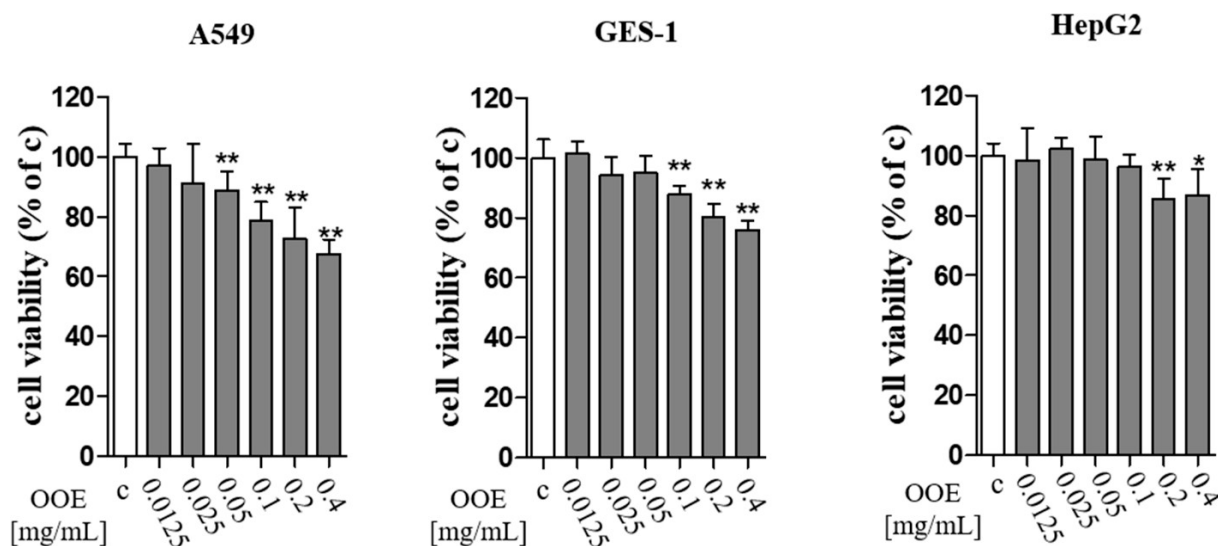
<sup>1</sup> College of Korean Medicine, Kyung Hee University, 26, Kyungheedaero, Dongdaemun-gu, Seoul 02447, Korea; aej3866@naver.com (E.-J.A.); yumi0201@khu.ac.kr; (Y.K.); skyking27@naver.com (S.-H.L.); rhgusals93@naver.com (H.M.K.)

<sup>2</sup> Department of Science in Korean Medicine, Graduate School, Kyung Hee University, Seoul 02447, Korea.

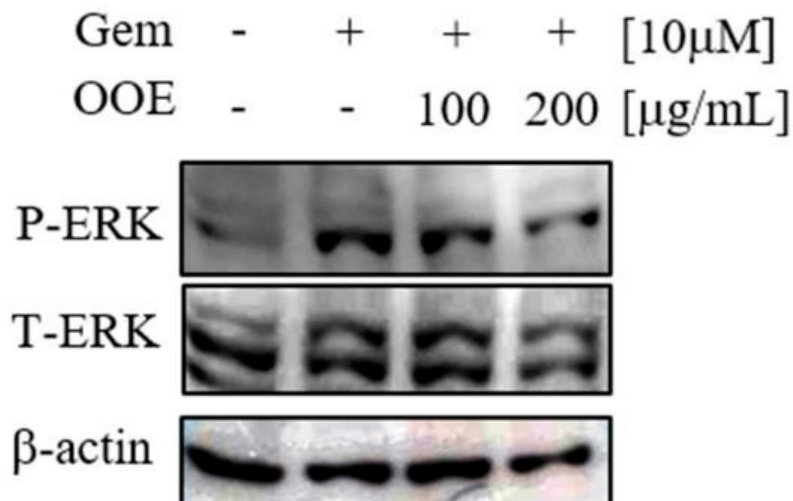
<sup>3</sup> College of Korean Medicine, Kyung Hee University, 26, Kyungheedaero, Dongdaemun-gu, Seoul 02447, Korea

<sup>4</sup> College of Korean Medicine and College of Pharmacy, Kyung Hee University, 26, Kyungheedaero, Dongdaemun-gu, Seoul, 02447, Korea

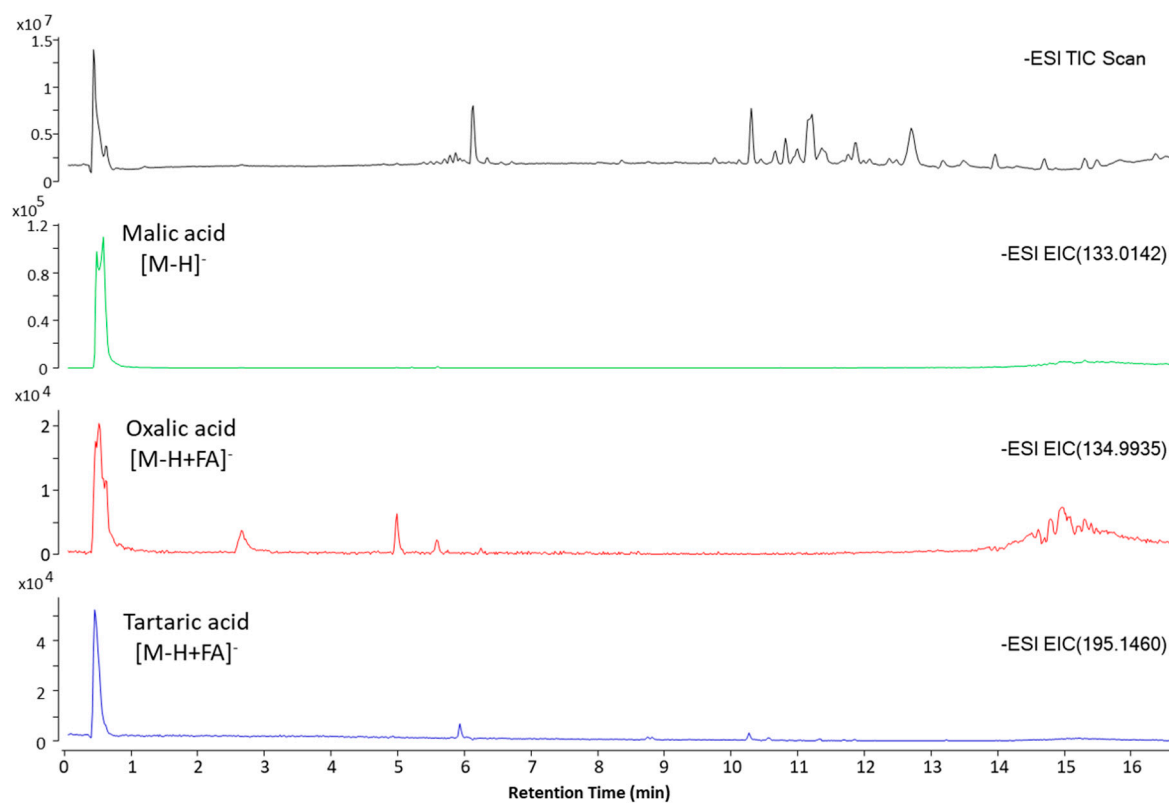
\* Correspondence: omdluke@khu.ac.kr (W.-S.C.); hjjang@khu.ac.kr (H.-J.J.)



**Figure S1.** Effects of OOE on A549, GES-1 and HepG2 cells viability. Cells were seeded in 96-well plates and treated with OOE (0, 12.5, 25, 50, 100, 200, and 400  $\mu\text{g}/\text{mL}$ ) for 24 h. Cell viability was determined using MTT solution. The relative cell viability is shown as a bar graph compared with the control group (100%). MTT data are expressed as the mean  $\pm$  S.D.



**Figure 2.** Effect of OOE on ERK expression which is overexpressed by Gemcitabine. Cells are seeded in 6 well plate with or without Gemcitabine(10 $\mu$ M) 24 h before treated with or without OOE for 3 h. pERK, TERK and actin were detected by western blot.



**Figure S3.** LC-MS analysis of OOE. LC-MS was performed to confirm the separation of components in OOE. A negative ion chromatogram of OOE is described to suggest the common acidic components including oxalic acid, malic acid and tartaric acid.