

Effects of inulin propionate ester on obesity-related metabolic syndrome and intestinal microbial homeostasis in diet-induced obese mice

Xiaozhen Zhu^{1,2}, Xia Zhang^{1,2}, Xuelu Gao^{2,3}, Yuetao Yi^{*, 1,5}, Yang Hou⁷, Xianyao Meng^{1,2}, Chenchen Jia^{1,2}, Bo Chao⁶, Wenyong Fan⁶, Xinrui Li⁶, Hanhan Zhang^{*,4}

¹ Yantai Institute of Coastal Zone Research, Chinese Academy of Sciences, Yantai 264003, China

² University of Chinese Academy of Sciences, Beijing 100049, China

³ CAS Key Laboratory of Coastal Environmental Processes and Ecological Remediation, Yantai Institute of Coastal Zone Research, Chinese Academy of Sciences, Yantai 264003, China

⁴ Department of Biochemistry and Molecular Biology, Key Laboratory of Tumor Molecular Biology in Binzhou Medical University, Binzhou Medical University, Yantai, Shandong, 264003, China

⁵ Center for Ocean Mega-Science, Chinese Academy of Sciences, 7 Nanhai Road, Qingdao, 266071, China

⁶ School of Clinical Medicine at Binzhou Medical University, 264003, China

⁷ Beijing Dongcheng District Food and Drug Safety Monitoring Center, Beijing 100050, China

* Corresponding Author:

Email: ytyi@yic.ac.cn (Yuetao Yi)

Email: bettyonline@163.com (Hanhan Zhang)

Supporting information consists of 1 table (Tables S1) and 2 figures (Figure S1-S2)

Table S1 The Diet composition of low-fat diet and high-fat diet.

Diet	Low-fat diet		High-fat diet	
	gm%	Kcal%	gm%	Kcal%
Protein	19.2	20	26.2	20
Carbohydrate	67.3	70	26.3	20
Fat	4.3	10	34.9	60
Total		100		100
Kcal/gm	3.85		5.24	
Ingredient	gm	Kcal	gm	Kcal
Casein, 80 Mesh	200	800	200	800
L-Cystine	3	12	3	12
Corn Starch	315	1260	0	0
Maltodextrin 10	35	140	125	500
Sucrose	350	1400	68.8	275.2
Cellulose, BW200	50	0	50	0
Soybean Oil	25	225	25	225
Lard*	20	180	245	2205
Mineral Mix S10026	10	0	10	0
DiCalcium Phosphate	13	0	13	0
Calcium Carbonate	5.5	0	5.5	0
Potassium Citrate, 1 H2O	16.5	0	16.5	0
Vitamin Mix V1001	10	40	10	40
Choline Bitartrate	2	0	2	0
FD&C Blue Dye #1			0.05	0
FD&C Yellow Dye #5	0.05	0		
Total	1055.05	4057	773.85	4057

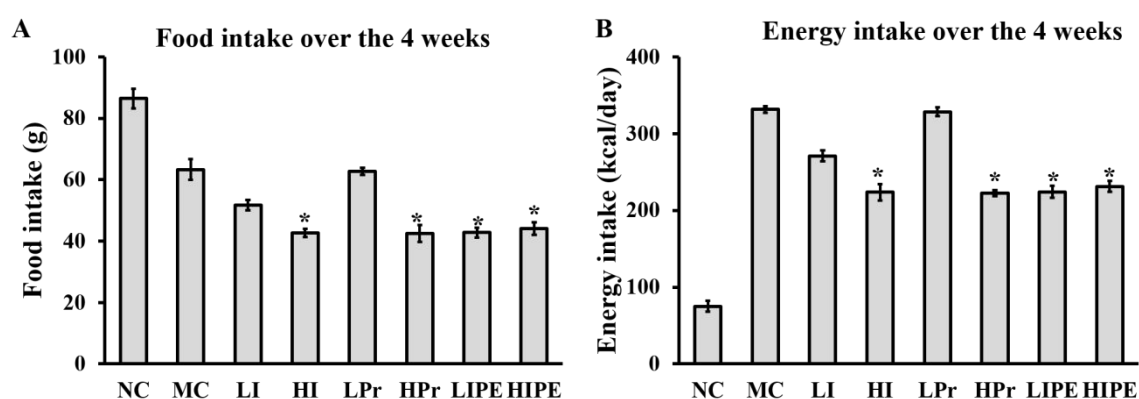


Figure S1 The cumulative food and energy intake over the 4 weeks in different groups. (A) The food intake over the 4 weeks; (B) Energy intake over the 4 weeks. *P < 0.05 versus MC.

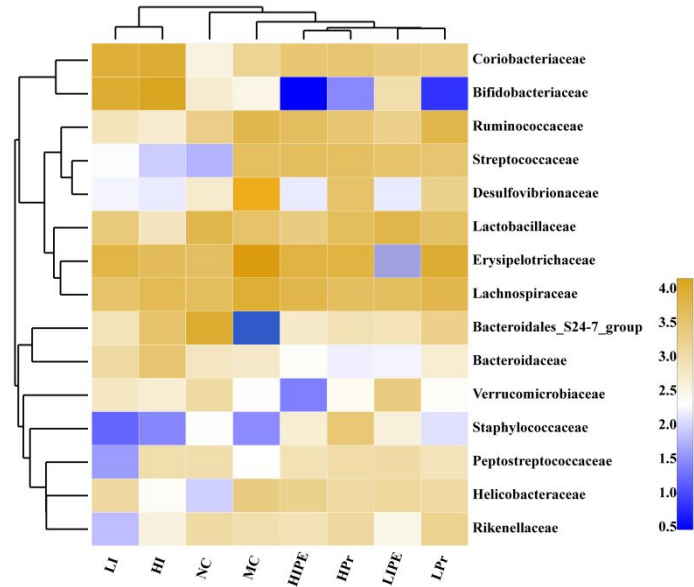


Figure S2 Heat map analysis of microbial community composition at family level