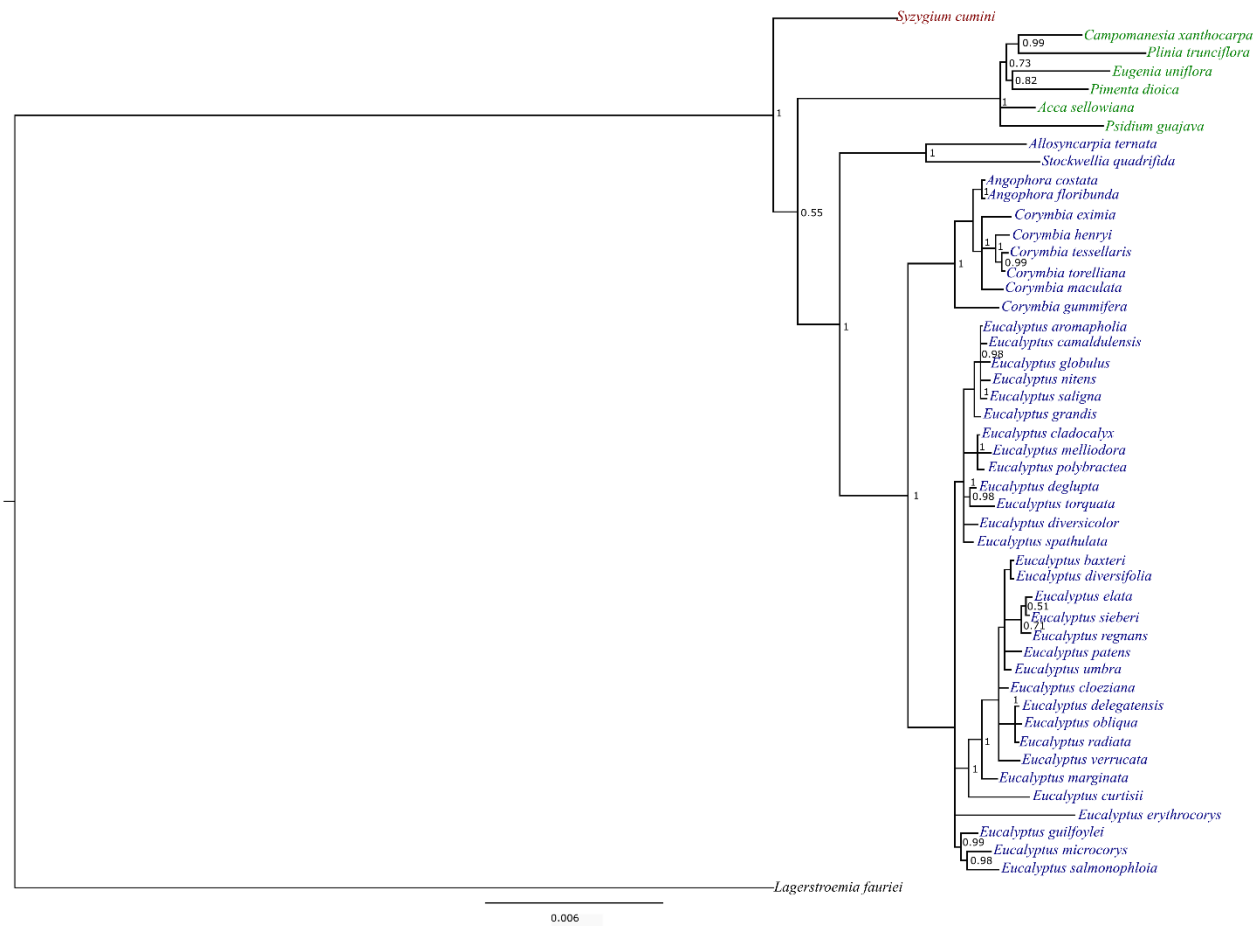


## Supplementary Material to "Molecular relationships of *Campomanesia xanthocarpa* within Myrtaceae based on the complete plastome sequence and on the plastid *ycf2* gene"



**Figure S3** - Bayesian phylogeny based on five most variable genes (*atpA*, *rpoC2*, *pcbE*, *ndhH* and *rps16*) on chloroplast sequences of 48 Myrtaceae species and the outgroup *Lagerstroemia fauriei* (Myrtales: Lythraceae; KT358807). Branch length is proportional to the inferred divergence level.