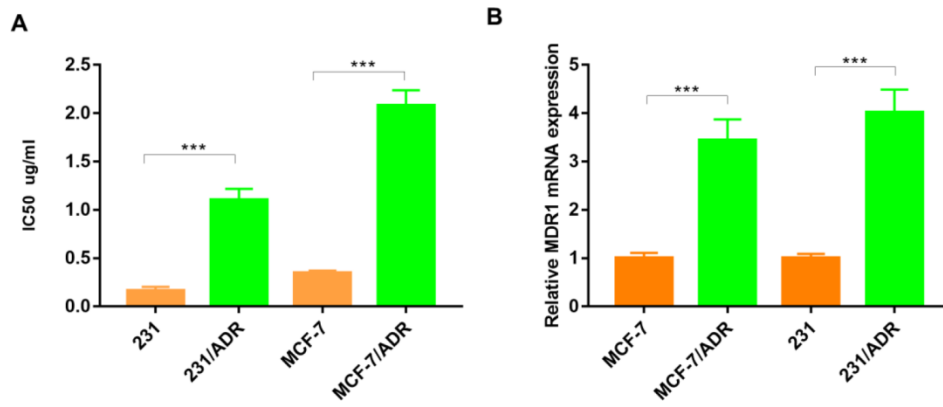
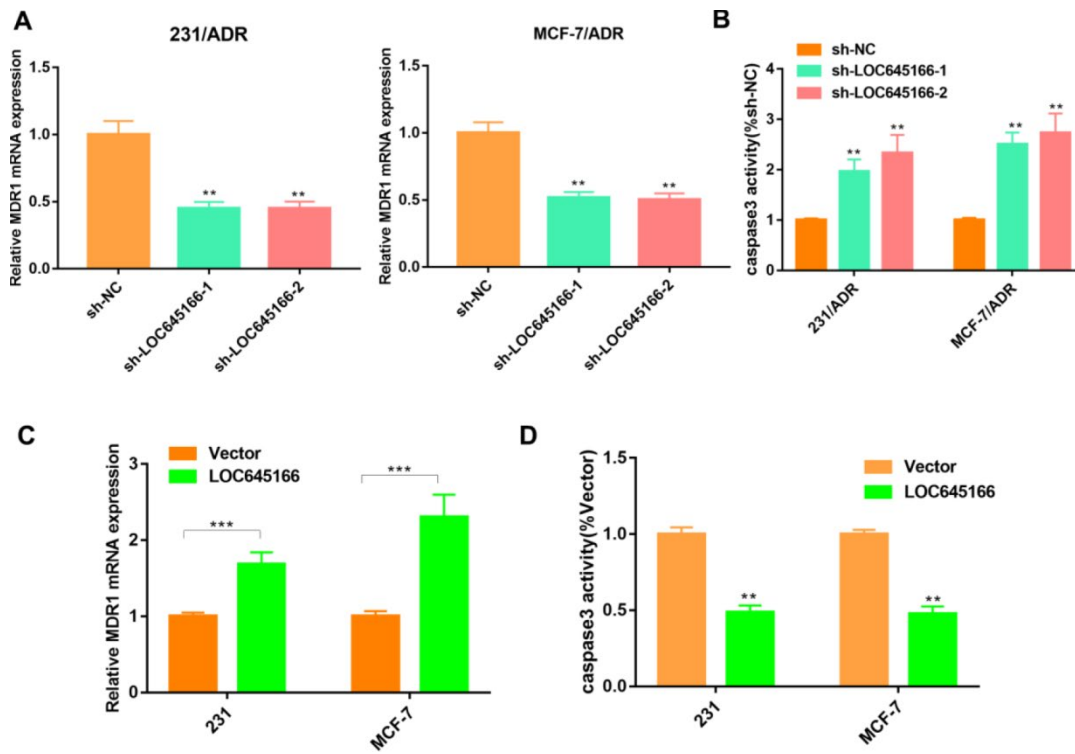


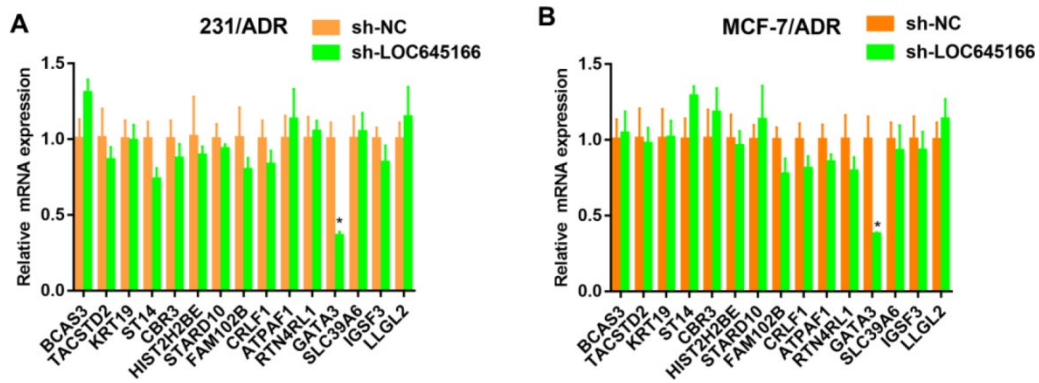
**SUPPLEMENTARY FIGURES**



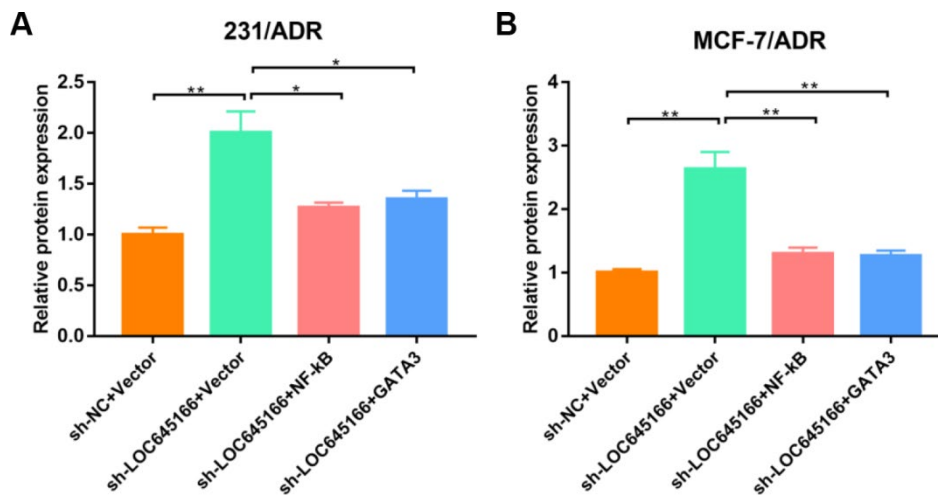
**Supplementary Figure 1.** (A) IC50 values of MDA-MB-231 adriamycin resistant cell (231/ADR), MCF-7 adriamycin resistant cell (MCF-7/ADR) and their parental cells (B) MDR1 mRNAs expression in MDA-MB-231 adriamycin resistant cell (231/ADR), MCF-7 adriamycin resistant cell (MCF-7/ADR) and their parental cells. Data are shown as means  $\pm$  SD. \*\*\*p < 0.001.



**Supplementary Figure 2.** (A) MDR1 mRNAs expression in the ADR resistance of breast cancer cell lines was detected by RT-qPCR after lnc-LOC645166 was knockdown. (B) The activity of caspase-3 was examined in LOC645166 knockdown ADR resistant cell lines using the colorimetric caspase-3 assay kit. (C) MDR1 mRNAs expression in the breast cancer cell lines was detected by RT-qPCR when lnc-LOC645166 was overexpressed. (D) The activity of caspase-3 was examined in LOC645166 overexpressed cell lines using the colorimetric caspase-3 assay kit. Data are shown as means  $\pm$  SD. \*p < 0.05, \*\*p < 0.01, \*\*\*p < 0.001.



**Supplementary Figure 3.** (A) Different expressed mRNAs in the ADR resistance of breast cancer was detected by RT-qPCR in 231/ADR after lnc-LOC645166 was knockdown. (B) Different expressed mRNAs in the ADR resistance of breast cancer was detected by RT-qPCR in MCF-7/ADR after lnc-LOC645166 was knockdown. Data are shown as means  $\pm$  SD. \* $p < 0.05$ .



**Supplementary Figure 4.** The activity of caspase-3 was examined in 231/ADR (A) and MCF-7/ADR (B) cells cotransfected with sh-LOC645166 and pcDNA-NF- $\kappa$ B or pcDNA-GATA3 using the colorimetric caspase-3 assay kit. Data are shown as means  $\pm$  SD. \* $p < 0.05$ , \*\* $p < 0.01$ .