

Supplementary Data

Figure 1. In vitro survival based on radiation dosage with transfection of miR-451a mimic.²⁴

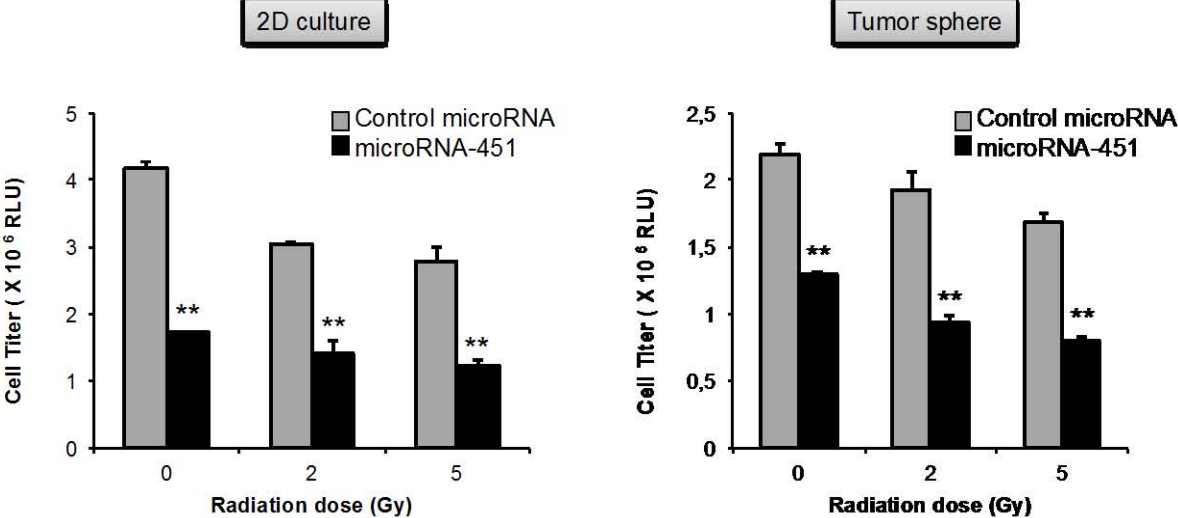


Figure 2. In vitro survival based on radiation dosage with transfection of miR-451a inhibitor.²⁴

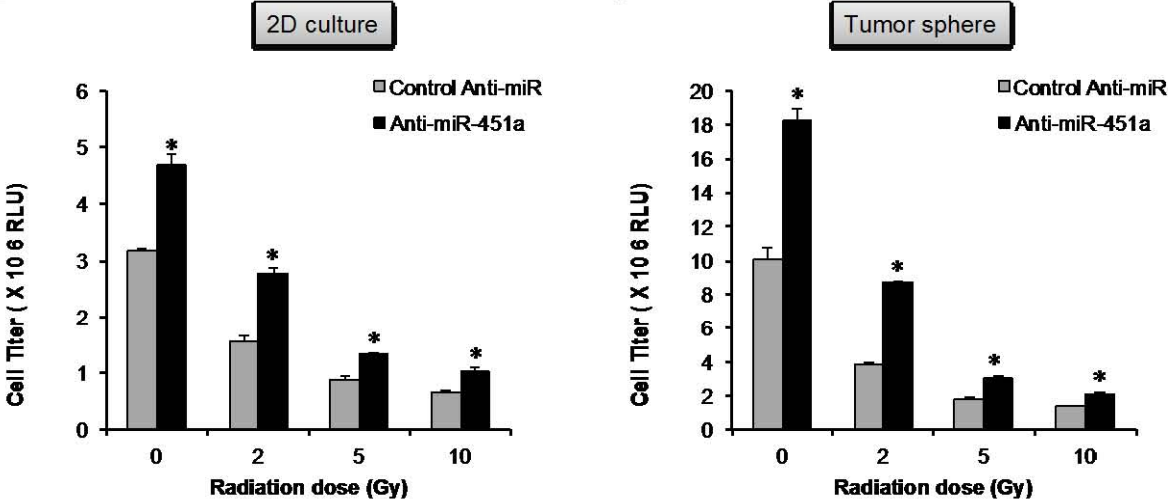


Figure 3. In vivo miR profile in tumor mouse model with radiation therapy and expression profile of miR-451a.²⁴

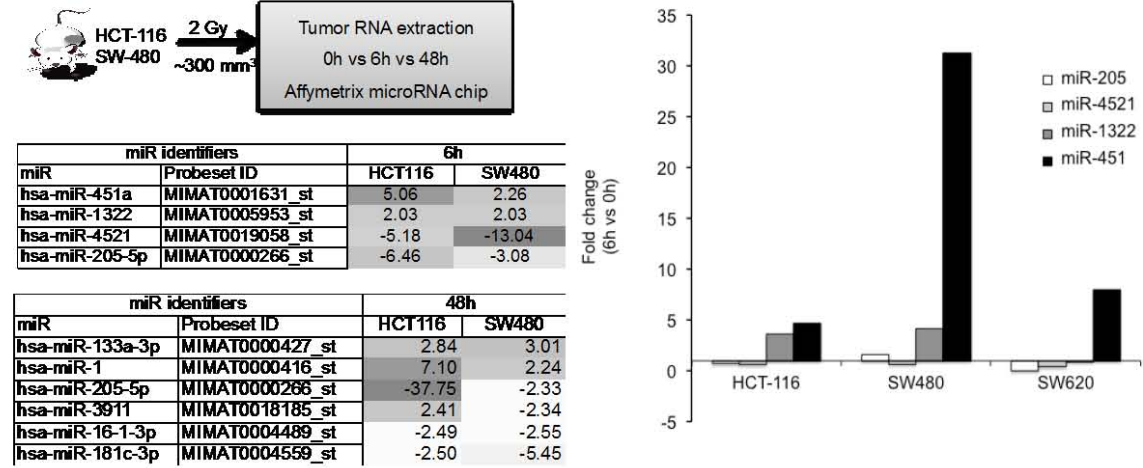


Figure 4. RISC Trap analysis demonstrating direct relationship of miR-451a with CAB39 and EMSY.²⁴

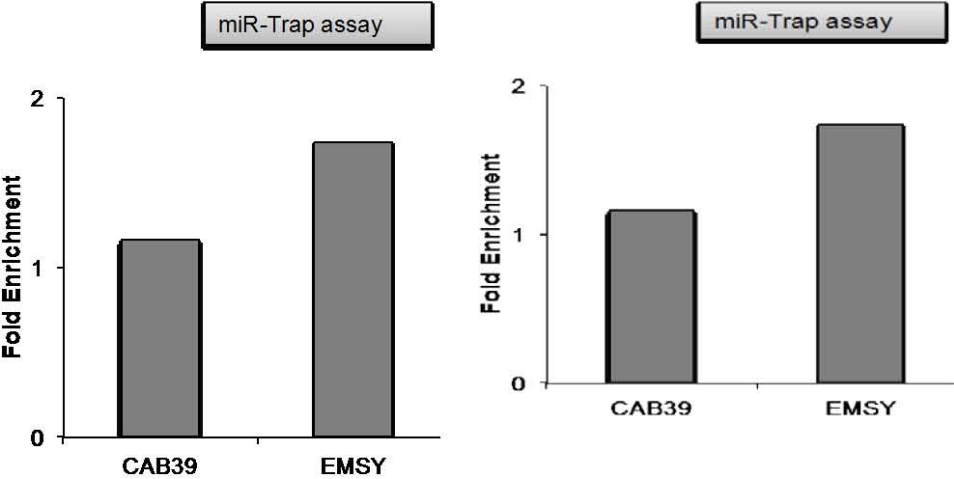


Figure 5. Proposed relationship of CAB39 and EMSY and mechanisms of SHP2 and RAF inhibitors.

