

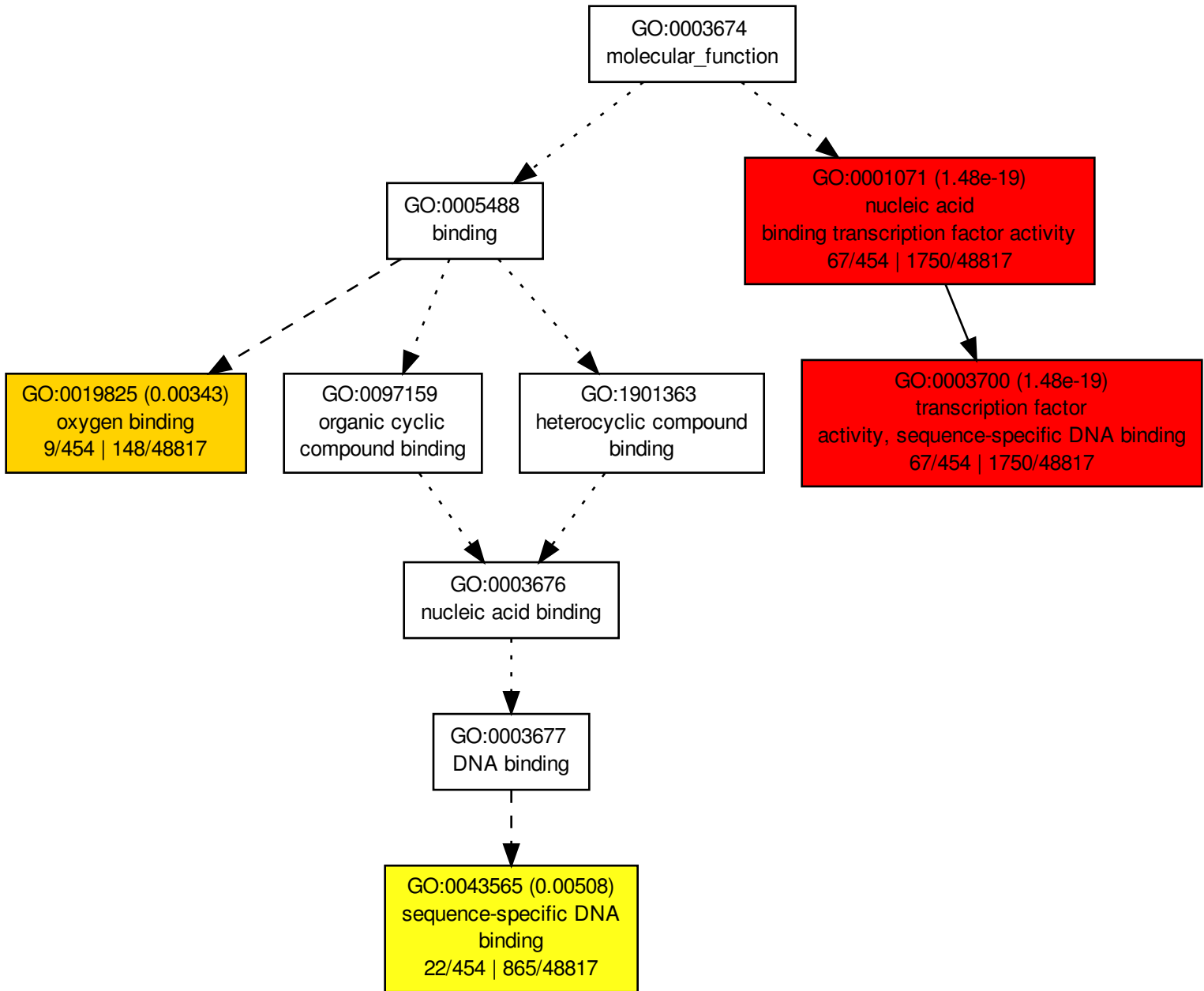
Supplementary figures

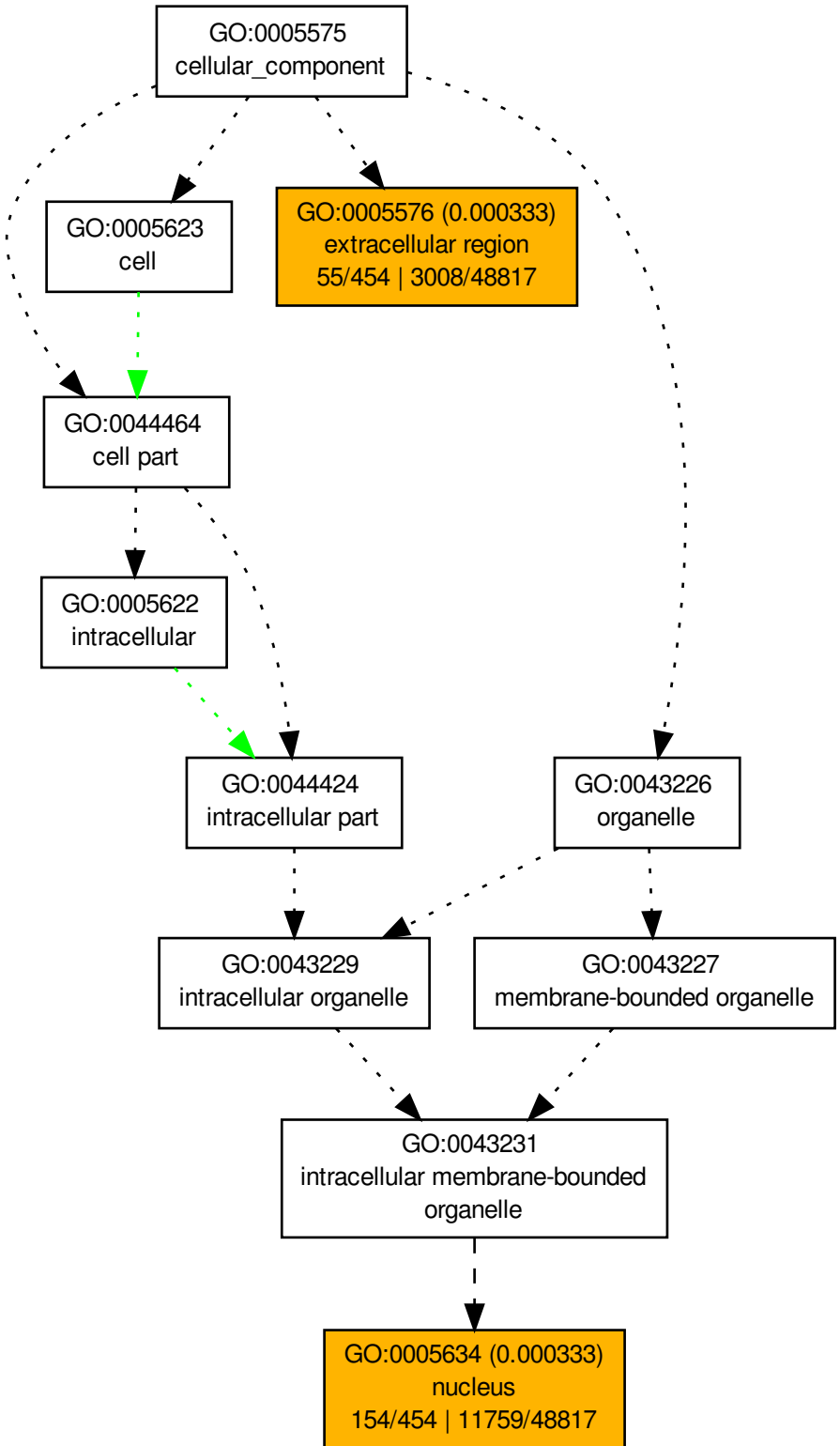
Transcriptome analyses suggest that changes in fungal endophyte lifestyle could be involved in grapevine bud necrosis

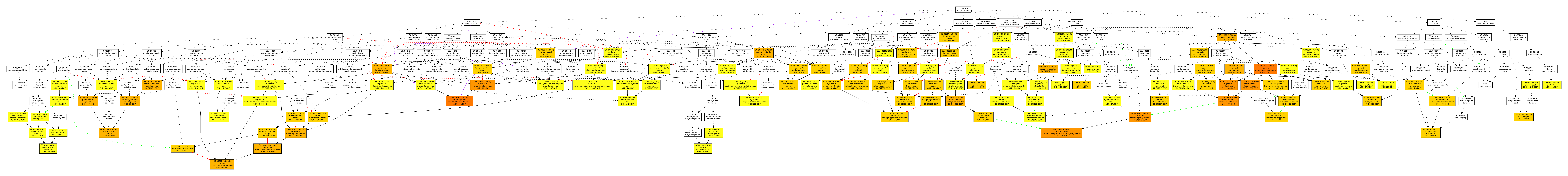
Thales Henrique Cherubino Ribeiro¹, Christiane Noronha Fernandes-Brum¹, Claudia Rita de Souza², Frederico Alcantara Novelli Dias², Osmar De Almeida Junior³, Murilo de Albuquerque Regina², Kellen Kauanne Pimenta de Oliveira¹, Gabriel Lasmar dos Reis¹, Larissa Maia Oliveira⁴, Fernanda de Paula Fernandes², Laurent Torregrosa⁵, Jorge Teodoro de Souza⁴, Antonio Chalfun-Junior (ORCID 0000-0002-1794-9429)^{1*}

1. Laboratory of Molecular Plant Physiology, Department of Biology, Federal University of Lavras, Lavras, Brazil
2. Technological Center of Grape and Wine Research, Agronomical Research Institute of Minas Gerais, Caldas, Brazil
3. Coordination of Integral Technical Assistance of São Paulo, São Paulo, Brazil
4. Department of Phytopathology, Federal University of Lavras, Lavras, Brazil
5. Montpellier SupAgro, France

*Corresponding author at: Laboratory of Molecular Plant Physiology, Biology Department, Federal University of Lavras (UFLA), s/n - Cx. P. 3037- Minas Gerais, Brazil. Fax: +55-35-3829-1887, chalfunjunior@ufla.br







GO:0003674
molecular_function



GO:0001071 (3.86e-18)
nucleic acid
binding transcription factor activity
60/395 | 1750/48817



GO:0003700 (3.86e-18)
transcription factor
activity, sequence-specific DNA binding
60/395 | 1750/48817

GO:0005575
cellular_component



GO:0005576 (2.19e-12)
extracellular region
69/395 | 3008/48817

